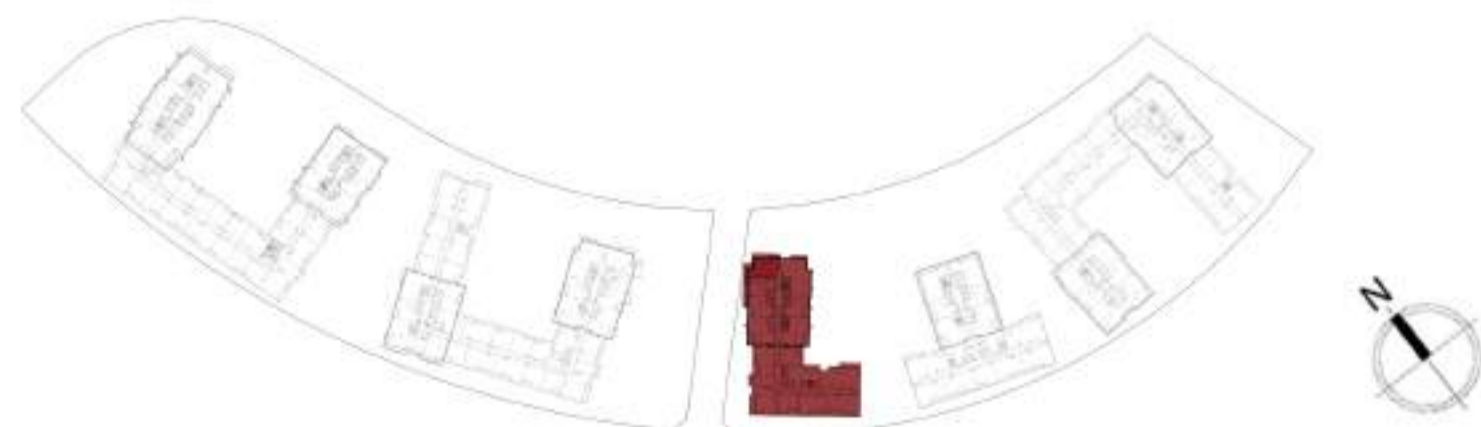


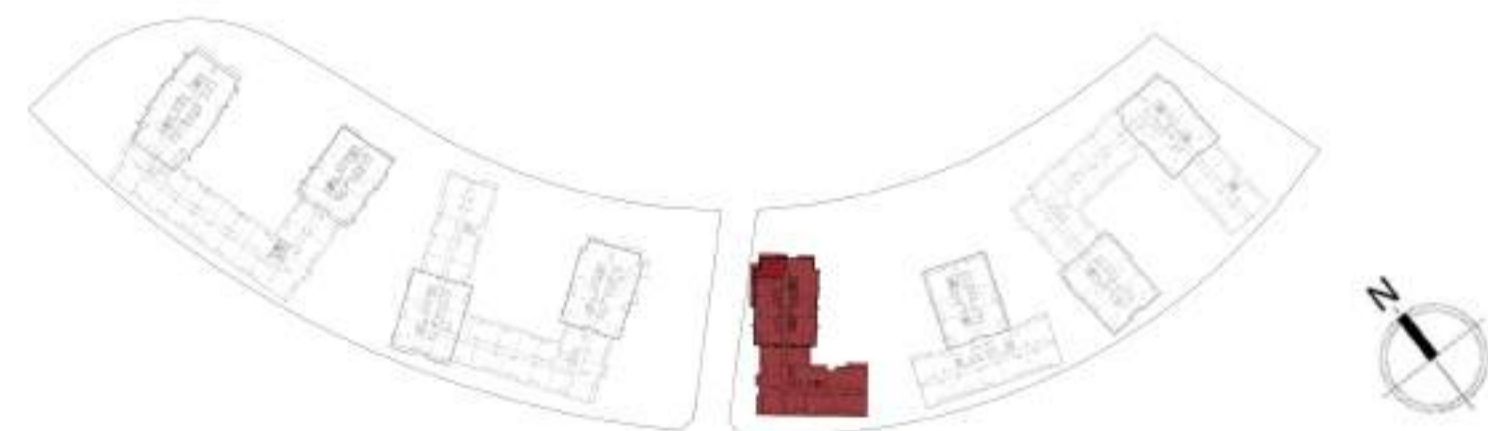
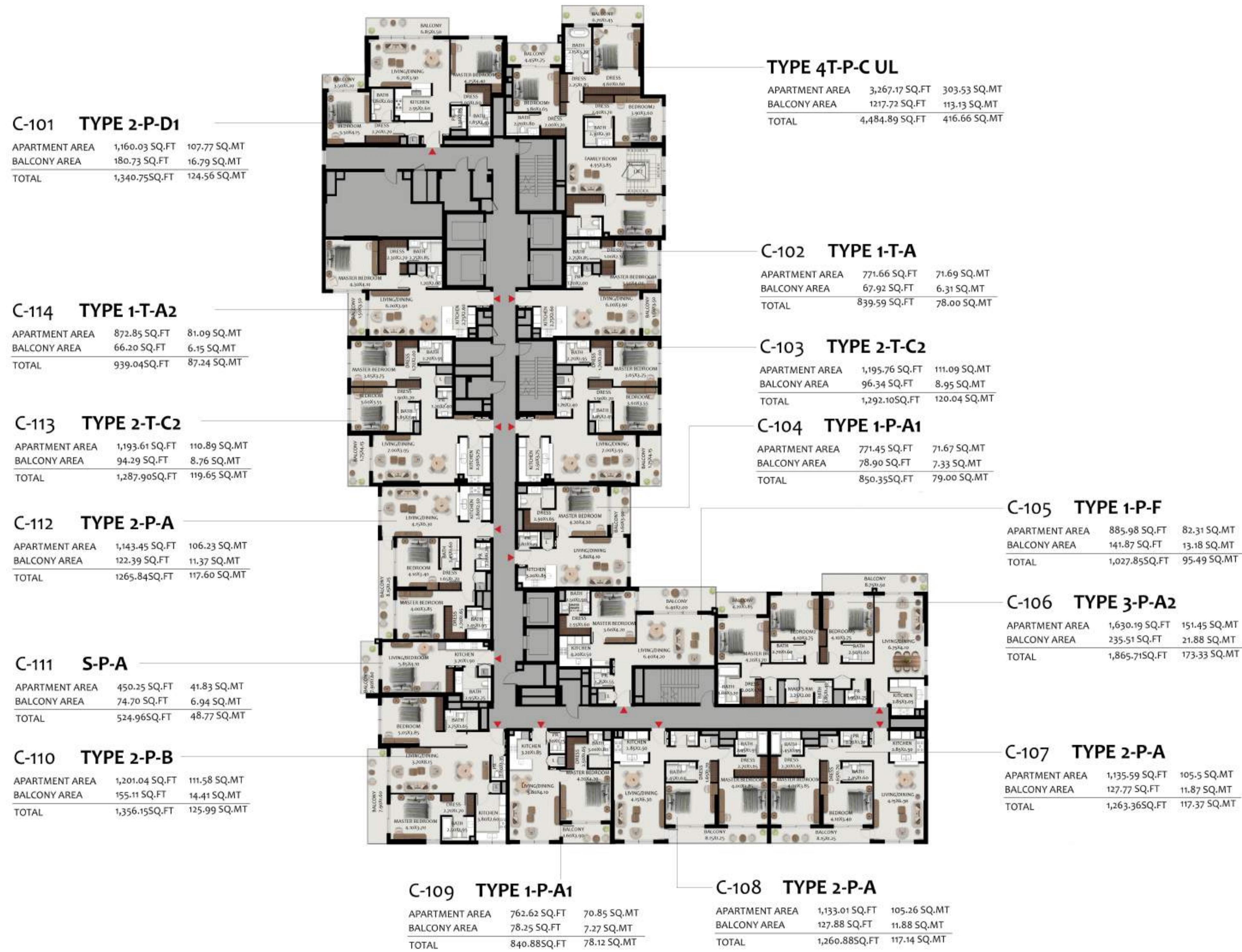
BUILDING 2C - GROUND FLOOR

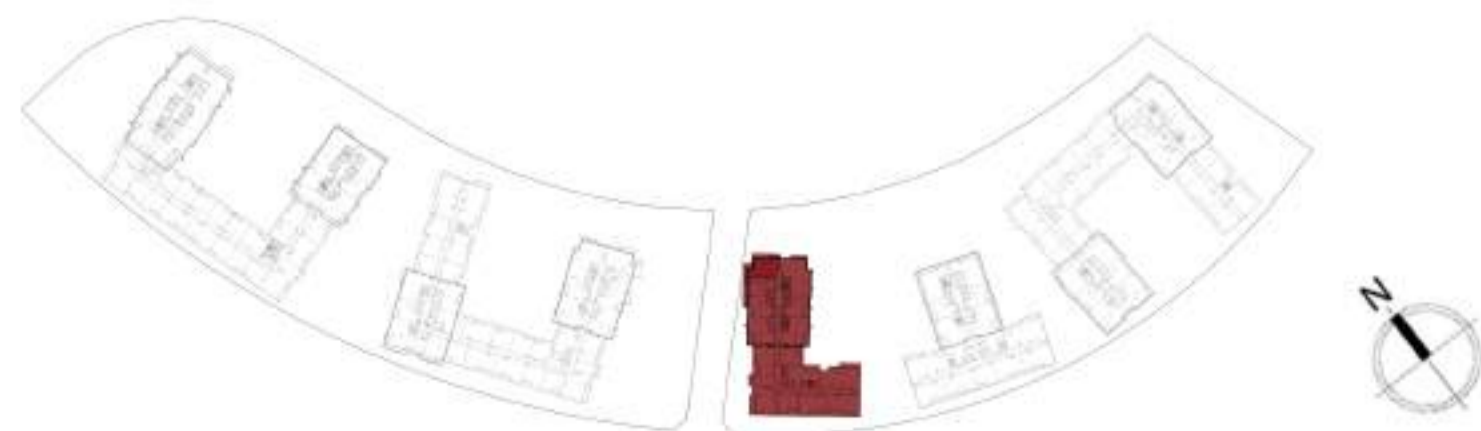
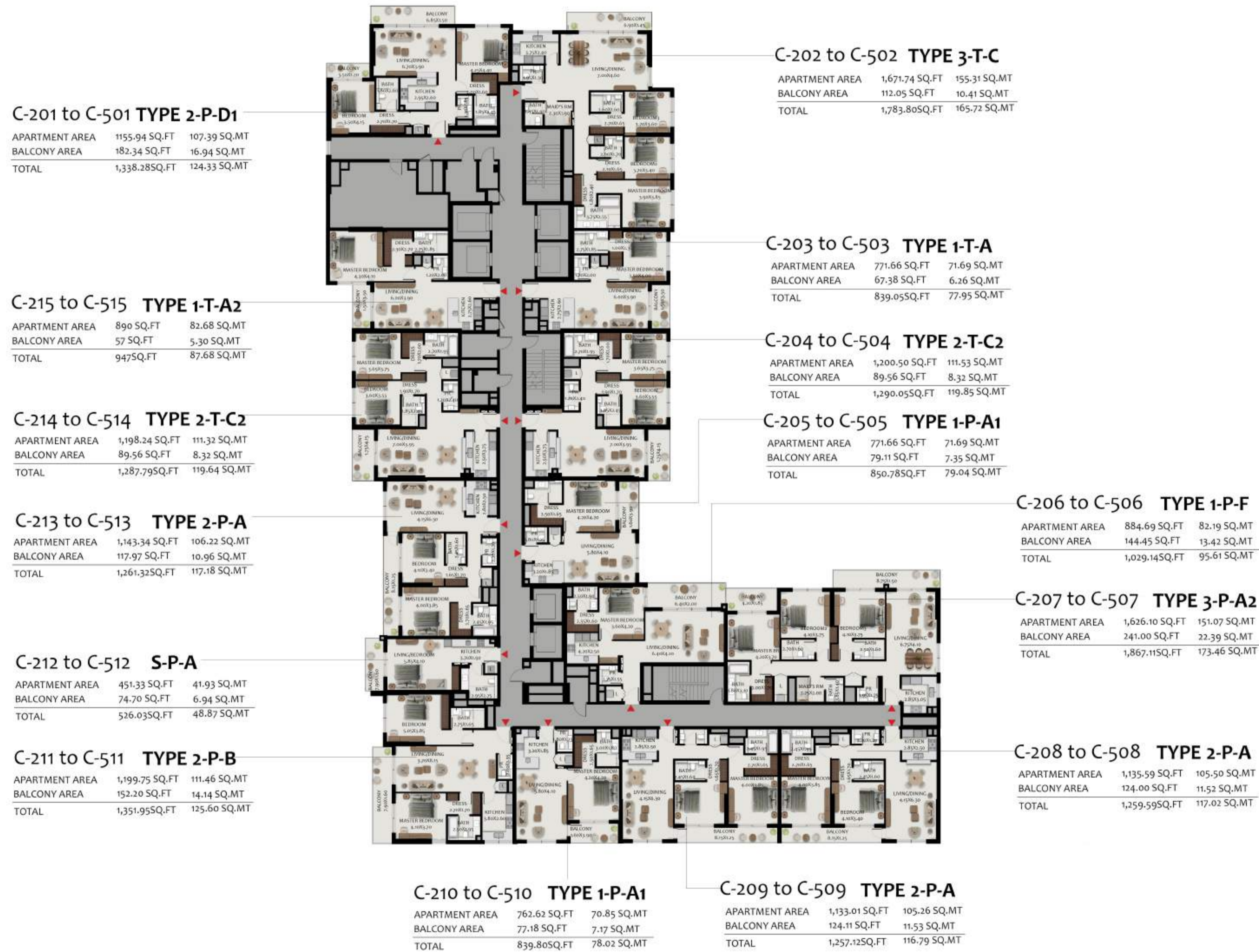


C-001 TYPE 4T-P-C LL

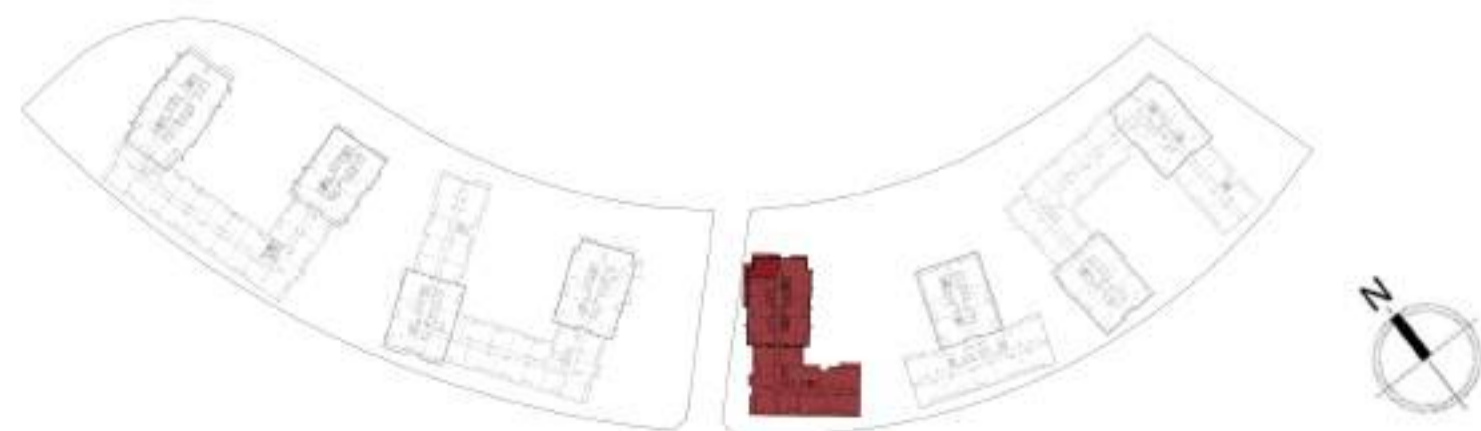
APARTMENT AREA	3,267.17 SQ.FT	303.53 SQ.MT
TERRACE AREA	1,217.72 SQ.FT	113.13 SQ.MT
TOTAL	4,484.89 SQ.FT	416.66 SQ.MT







All room dimensions are in metric and measured to structural elements and exclude wall finishes and construction tolerances. Calculation of suite area is measured as the area bounded by the centerline of demising or party walls separating one unit from another unit, the exterior surface of all exterior walls and the exterior surface of the corridor wall on enclosing and abutting the unit. Calculation of Terrace area is measured as the area bounded by the centerlines of demising or party walls separating one unit from another unit, the outermost face of the enclosing guard and the external face of the site abutting the balcony. All materials, dimensions & drawings features and amenities are approximate at the time of printing. Information subject to change without notice. Actual suite areas may vary from the stated area. Drawings are not to scale. The developer reserves the right to make revisions



BUILDING 2C - LEVEL 08 to 11 | TYPICAL TOWER

C-801 to C-1101 TYPE 3-T-C

APARTMENT AREA	1,690.90 SQ.FT	157.09 SQ.MT
BALCONY AREA	113.77 SQ.FT	10.57 SQ.MT
TOTAL	1,804.68SQ.FT	167.66 SQ.MT

C-802 to C-1102 TYPE 3-T-C

APARTMENT AREA	1,680.89 SQ.FT	156.16 SQ.MT
BALCONY AREA	113.77 SQ.FT	10.57 SQ.MT
TOTAL	1,794.67SQ.FT	166.73 SQ.MT

C-806 to C-1106 TYPE 1-T-A

APARTMENT AREA	770.91 SQ.FT	71.62 SQ.MT
BALCONY AREA	67.60 SQ.FT	6.28 SQ.MT
TOTAL	838.51SQ.FT	77.90 SQ.MT

C-803 to C-1103 TYPE 1-T-A

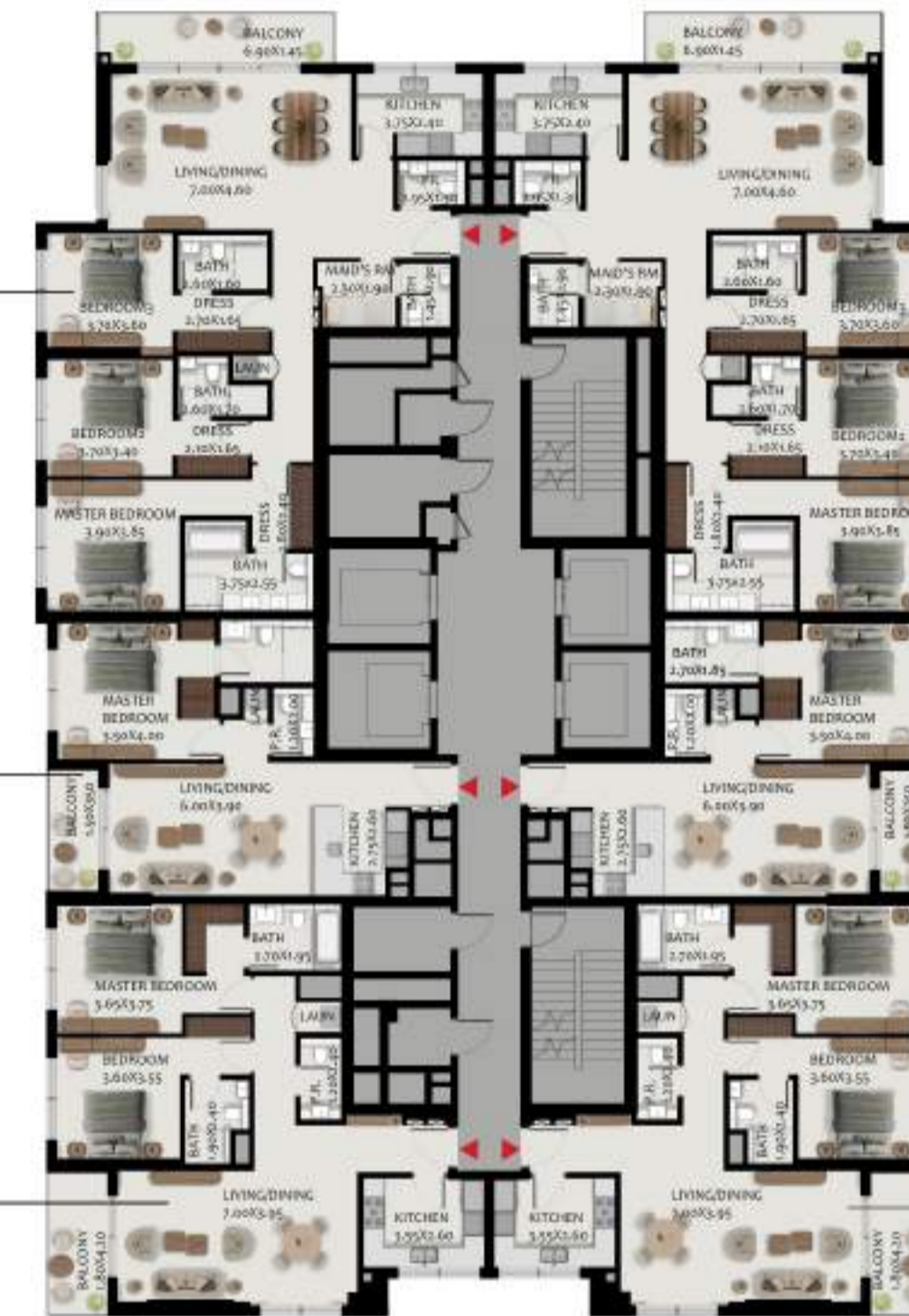
APARTMENT AREA	770.16 SQ.FT	71.55 SQ.MT
BALCONY AREA	67.60 SQ.FT	6.28 SQ.MT
TOTAL	837.76SQ.FT	77.83 SQ.MT

C-805 to C-1105 TYPE 2-T-C1

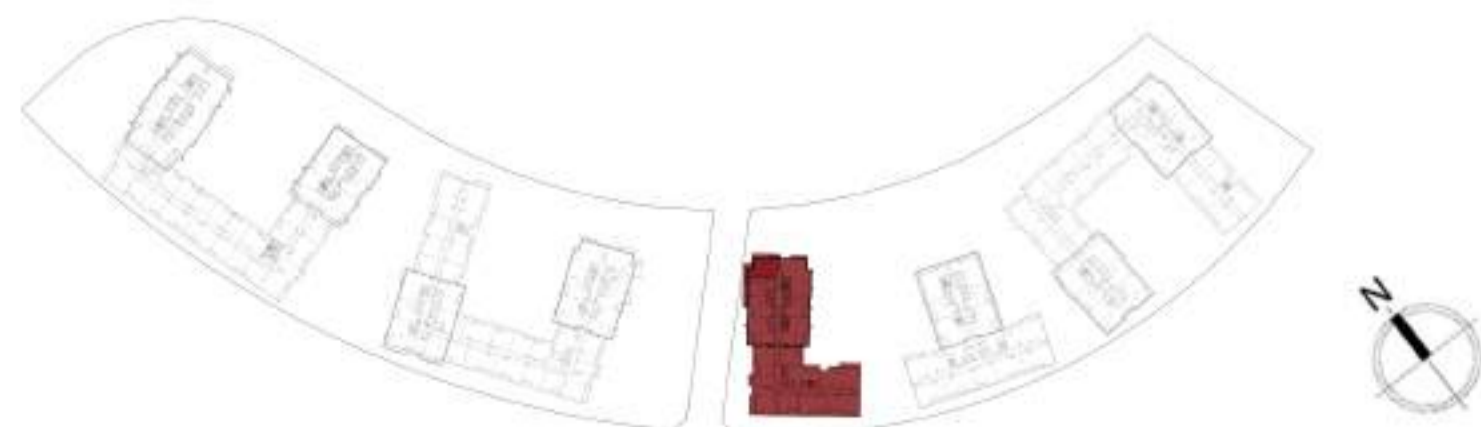
APARTMENT AREA	1,204.59 SQ.FT	111.91 SQ.MT
BALCONY AREA	88.80 SQ.FT	8.25 SQ.MT
TOTAL	1,293.39SQ.FT	120.16 SQ.MT

C-804 to C-1104 TYPE 2-T-C1

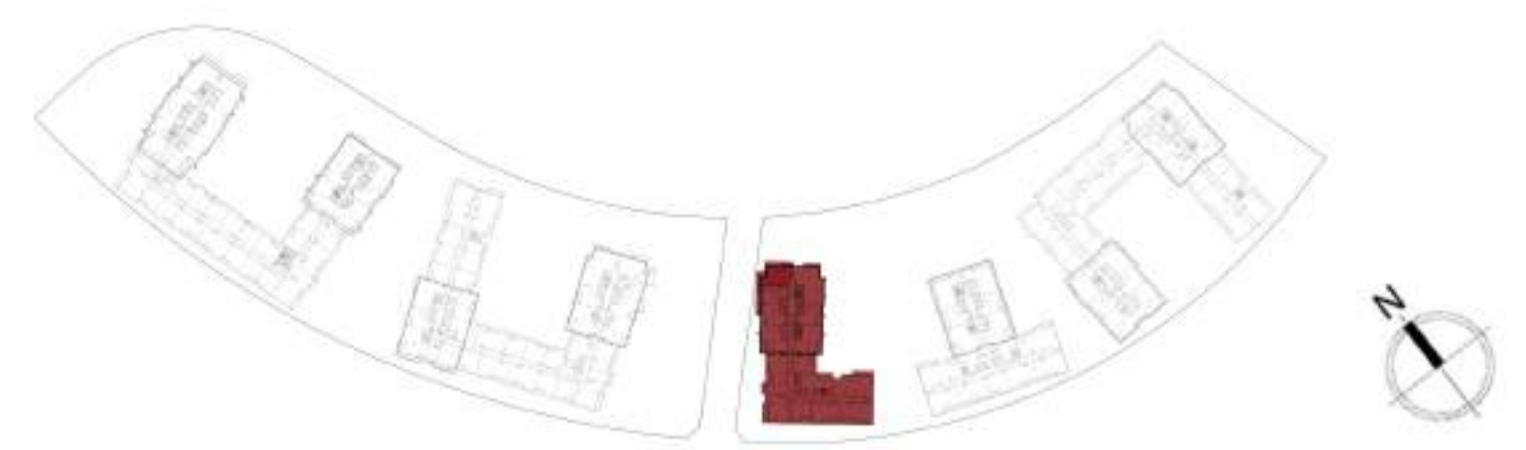
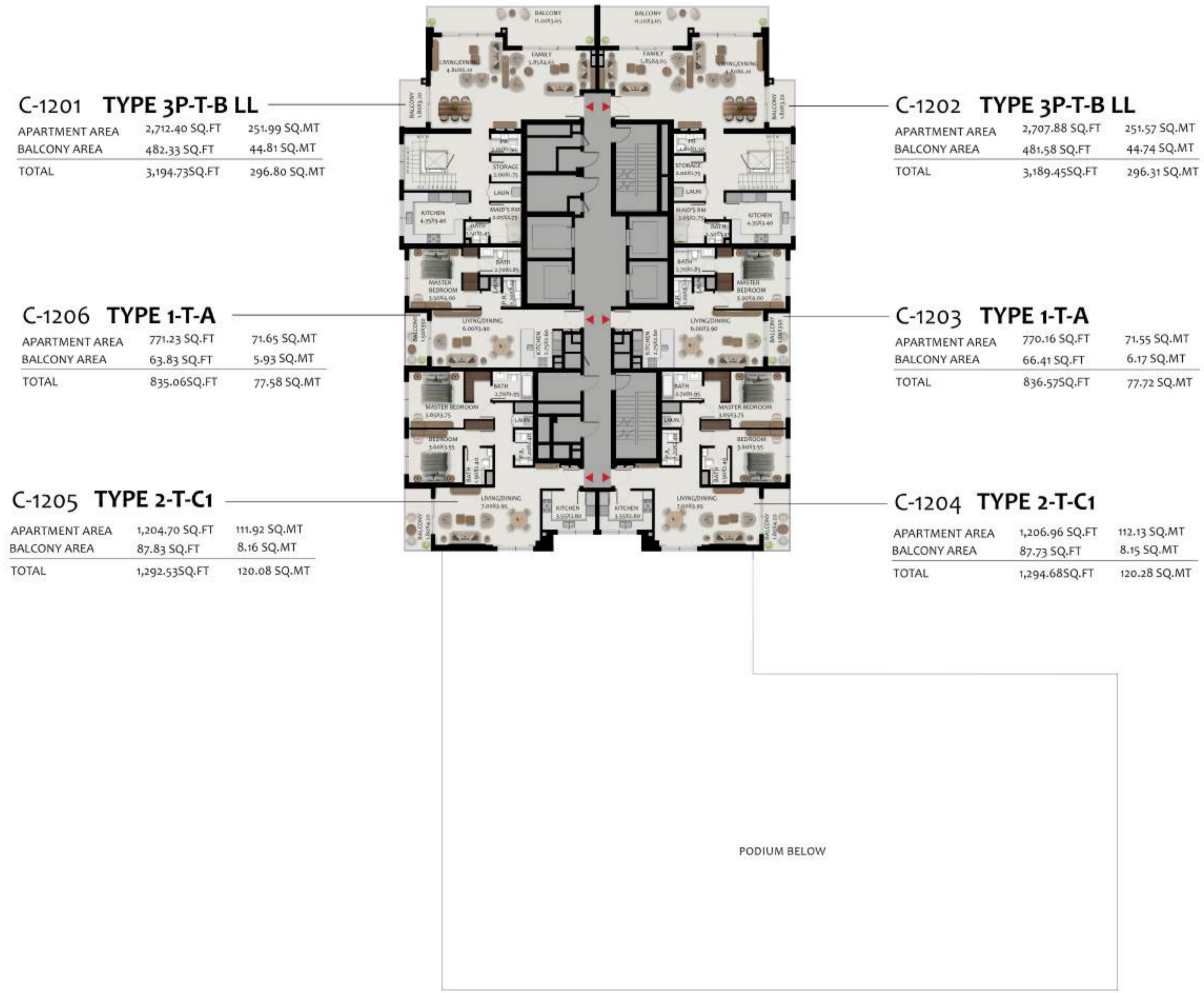
APARTMENT AREA	1,206.10 SQ.FT	112.05 SQ.MT
BALCONY AREA	88.91 SQ.FT	8.26 SQ.MT
TOTAL	1,295.01SQ.FT	120.31 SQ.MT



PODIUM BELOW



BUILDING 2C - LEVEL 12 | PENTHOUSE LOWER LEVEL



All room dimensions are in metric and measured to structural elements and exclude wall finishes and construction tolerances. Calculation of suite area is measured as the area bounded by the centerline of demising or party walls separating one unit from another unit, the exterior surface of all exterior walls and the exterior surface of the corridor wall on enclosing and abutting the unit. Calculation of Terrace area is measured as the area bounded by the centerlines of demising or party walls separating one unit from another unit, the outermost face of the enclosing guard and the external face of the site abutting the balcony. All materials, dimensions & drawings features and amenities are approximate at the time of printing. Information subject to change without notice. Actual suite areas may vary from the stated area. Drawings are not to scale. The developer reserves the right to make revisions

BUILDING 2C - LEVEL 13 | PENTHOUSE UPPER LEVEL

TYPE 3P-T-B UL

APARTMENT AREA	2,712.40 SQ.FT	251.99 SQ.MT
BALCONY AREA	482.33 SQ.FT	44.81 SQ.MT
TOTAL	3,194.73SQ.FT	296.80 SQ.MT

TYPE 3P-T-B UL

APARTMENT AREA	2,707.88 SQ.FT	251.57 SQ.MT
BALCONY AREA	481.58 SQ.FT	44.74 SQ.MT
TOTAL	3,189.45SQ.FT	296.31 SQ.MT

C-1304 TYPE 1-T-A

APARTMENT AREA	771.34 SQ.FT	71.66 SQ.MT
BALCONY AREA	65.88 SQ.FT	6.12 SQ.MT
TOTAL	837.22SQ.FT	77.78 SQ.MT

C-1301 TYPE 1-T-A

APARTMENT AREA	770.16 SQ.FT	71.55 SQ.MT
BALCONY AREA	66.41 SQ.FT	6.17 SQ.MT
TOTAL	836.57SQ.FT	77.72 SQ.MT

C-1303 TYPE 2-T-C1

APARTMENT AREA	1,205.02 SQ.FT	111.95 SQ.MT
BALCONY AREA	88.05 SQ.FT	8.18 SQ.MT
TOTAL	1,293.07SQ.FT	120.13 SQ.MT

C-1302 TYPE 2-T-C1

APARTMENT AREA	1,206.96 SQ.FT	112.13 SQ.MT
BALCONY AREA	87.73 SQ.FT	8.15 SQ.MT
TOTAL	1,294.68SQ.FT	120.28 SQ.MT



PODIUM BELOW

