

BUILDING 2E - GROUND FLOOR

E-003 TYPE 4T-P-B LL

APARTMENT AREA	3276.32 SQ.FT	304.38 SQ.MT
BALCONY AREA	727.53 SQ.FT	67.59 SQ.MT
TOTAL	4003.85 SQ.FT	371.97 SQ.MT

E-004 TYPE 4T-P-B LL

APARTMENT AREA	3274.27 SQ.FT	304.19 SQ.MT
BALCONY AREA	714.94 SQ.FT	66.42 SQ.MT
TOTAL	3989.21 SQ.FT	370.61 SQ.MT

E-005 TYPE 4T-P-B LL

APARTMENT AREA	3296.56 SQ.FT	306.26 SQ.MT
BALCONY AREA	707.40 SQ.FT	65.72 SQ.MT
TOTAL	4003.96 SQ.FT	371.98 SQ.MT

E-006 TYPE 2D-P-A LL

APARTMENT AREA	1573.68 SQ.FT	146.20 SQ.MT
BALCONY AREA	365.97 SQ.FT	34.00 SQ.MT
TOTAL	1939.66 SQ.FT	180.20 SQ.MT

E-002 TYPE 3T-P-B LL

APARTMENT AREA	2568.59 SQ.FT	238.63 SQ.MT
BALCONY AREA	703.10 SQ.FT	65.32 SQ.MT
TOTAL	3271.69 SQ.FT	303.95 SQ.MT

E-001 TYPE S-P-A

APARTMENT AREA	450.04 SQ.FT	41.81 SQ.MT
BALCONY AREA	101.72 SQ.FT	9.45 SQ.MT
TOTAL	551.76 SQ.FT	51.26 SQ.MT

E-007 TYPE 4T-P-C LL

APARTMENT AREA	3280.41 SQ.FT	304.76 SQ.MT
BALCONY AREA	1044.10 SQ.FT	97.00 SQ.MT
TOTAL	4324.51 SQ.FT	401.76 SQ.MT

E-008 TYPE 2-P-A

APARTMENT AREA	1134.30 SQ.FT	105.38 SQ.MT
BALCONY AREA	119.05 SQ.FT	11.06 SQ.MT
TOTAL	1253.35 SQ.FT	116.44 SQ.MT

E-009 TYPE 2-P-A

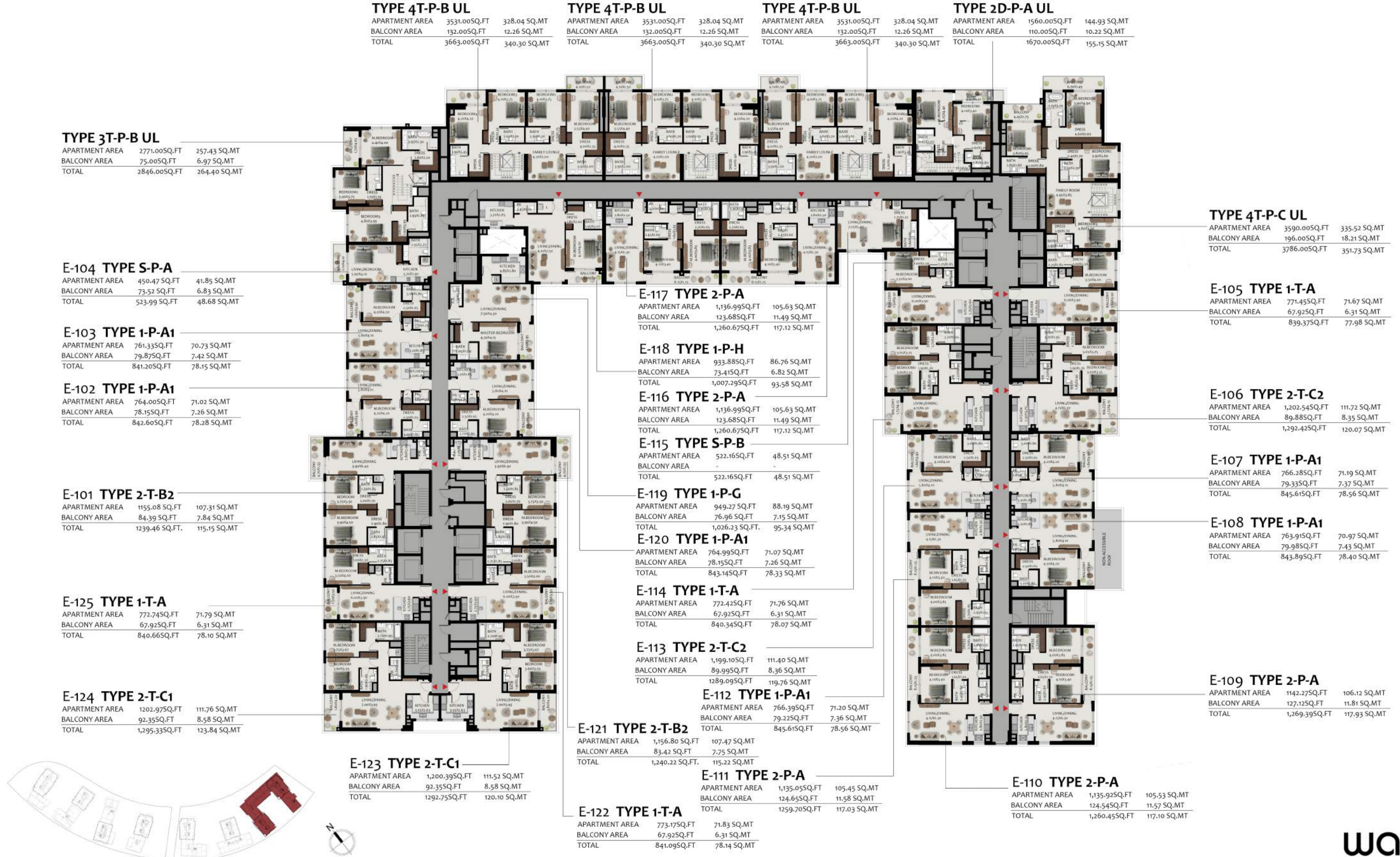
APARTMENT AREA	1136.99 SQ.FT	105.63 SQ.MT
BALCONY AREA	119.05 SQ.FT	11.06 SQ.MT
TOTAL	1256.04 SQ.FT	116.69 SQ.MT

E-010 TYPE 1-P-H

APARTMENT AREA	936.78 SQ.FT	87.03 SQ.MT
BALCONY AREA	70.83 SQ.FT	6.58 SQ.MT
TOTAL	1007.61 SQ.FT	93.61 SQ.MT



All room dimensions are in metric and measured to structural elements and exclude wall finishes and construction tolerances. Calculation of suite area is measured as the area bounded by the centerline of demising or party walls separating one unit from another unit, the exterior surface of all exterior walls and the exterior surface of the corridor wall on enclosing and abutting the unit. Calculation of Terrace area is measured as the area bounded by the centerlines of demising or party walls separating one unit from another unit, the outermost face of the enclosing guard and the external face of the site abutting the balcony. All materials, dimensions & drawings features and amenities are approximate at the time of printing, Information subject to change without notice. Actual suite areas may vary from the stated area. Drawings are not to scale. The developer reserves the right to make revisions



All room dimensions are in metric and measured to structural elements and exclude wall finishes and construction tolerances. Calculation of suite area is measured as the area bounded by the centerline of demising or party walls separating one unit from another unit, the exterior surface of all exterior walls and the exterior surface of the corridor wall on enclosing and abutting the unit. Calculation of Terrace area is measured as the area bounded by the centerlines of demising or party walls separating one unit from another unit, the outermost face of the enclosing guard and the external face of the site abutting the balcony. All materials, dimensions & drawings features and amenities are approximate at the time of printing. Information subject to change without notice. Actual suite areas may vary from the stated area. Drawings are not to scale. The developer reserves the right to make revisions



BUILDING 2E - LEVEL 02 & 04 | PODIUM

E-205/E-405 TYPE 2D-P-A LL

APARTMENT AREA	1,554.31SQ.FT	144.40 SQ.MT
BALCONY AREA	137.02SQ.FT	12.73 SQ.MT
TOTAL	1,691.33SQ.FT	157.13 SQ.MT

E-204/E-404 TYPE 3-P-A1

APARTMENT AREA	1,623.74 SQ.FT	150.85 SQ.MT
BALCONY AREA	301.39 SQ.FT	28.00 SQ.MT
TOTAL	1,925.13 SQ.FT	178.85 SQ.MT

E-203/E-403 TYPE 1-P-A1

APARTMENT AREA	761.22SQ.FT	70.72 SQ.MT
BALCONY AREA	79.87SQ.FT	7.42 SQ.MT
TOTAL	841.09SQ.FT	78.14 SQ.MT

E-202/E-402 TYPE 1-P-A1

APARTMENT AREA	764.99SQ.FT	71.07 SQ.MT
BALCONY AREA	78.15SQ.FT	7.26 SQ.MT
TOTAL	843.14SQ.FT	78.33 SQ.MT

E-201/E-401 TYPE 2-T-B2

APARTMENT AREA	1,155.08 SQ.FT	107.31 SQ.MT
BALCONY AREA	84.39 SQ.FT	7.84 SQ.MT
TOTAL	1,239.46 SQ.FT	115.15 SQ.MT

E-233/E-433 TYPE 1-T-A

APARTMENT AREA	772.74SQ.FT	71.79 SQ.MT
BALCONY AREA	67.92SQ.FT	6.31 SQ.MT
TOTAL	840.66SQ.FT	78.10 SQ.MT

E-232/E-432 TYPE 2-T-C1

APARTMENT AREA	1,203.30SQ.FT	111.79 SQ.MT
BALCONY AREA	92.35SQ.FT	8.58 SQ.MT
TOTAL	1,295.65SQ.FT	120.37 SQ.MT

E-206/E-406 TYPE 2D-P-A LL

APARTMENT AREA	1,551.08SQ.FT	144.10 SQ.MT
BALCONY AREA	124.43SQ.FT	11.56 SQ.MT
TOTAL	1,675.51SQ.FT	155.66 SQ.MT

E-208/E-408 TYPE 2D-P-A LL

APARTMENT AREA	1,550.97SQ.FT	144.09 SQ.MT
BALCONY AREA	124.86SQ.FT	11.60 SQ.MT
TOTAL	1,675.83SQ.FT	155.69 SQ.MT

E-207/E-407 TYPE 2D-P-A LL

APARTMENT AREA	1,551.40SQ.FT	144.13 SQ.MT
BALCONY AREA	124.65SQ.FT	11.58 SQ.MT
TOTAL	1,676.05SQ.FT	155.71 SQ.MT

E-209/E-409 TYPE 2D-P-A LL

APARTMENT AREA	1,554.42SQ.FT	144.41 SQ.MT
BALCONY AREA	124.75SQ.FT	11.59 SQ.MT
TOTAL	1,679.17SQ.FT	156.00 SQ.MT

E-210/E-410 TYPE 1-P-A1

APARTMENT AREA	771.13SQ.FT	71.64 SQ.MT
BALCONY AREA	78.79SQ.FT	7.32 SQ.MT
TOTAL	849.92SQ.FT	78.96 SQ.MT

E-211/E-411 TYPE 2D-P-A LL

APARTMENT AREA	1,575.51SQ.FT	146.37 SQ.MT
BALCONY AREA	138.42SQ.FT	12.86 SQ.MT
TOTAL	1,713.94SQ.FT	159.23 SQ.MT

E-212/E-412 TYPE 3-T-C

APARTMENT AREA	1,680.89 SQ.FT	156.16 SQ.MT
BALCONY AREA	116.36 SQ.FT	10.81 SQ.MT
TOTAL	1,797.25SQ.FT	166.97 SQ.MT

E-213/E-413 TYPE 1-T-A

APARTMENT AREA	771.45SQ.FT	71.67 SQ.MT
BALCONY AREA	67.92SQ.FT	6.31 SQ.MT
TOTAL	839.37SQ.FT	77.98 SQ.MT

E-214/E-414 TYPE 2-T-C2

APARTMENT AREA	1,202.01SQ.FT	111.67 SQ.MT
BALCONY AREA	89.77SQ.FT	8.34 SQ.MT
TOTAL	1,291.78SQ.FT	120.01 SQ.MT

E-215/E-415 TYPE 1-P-A1

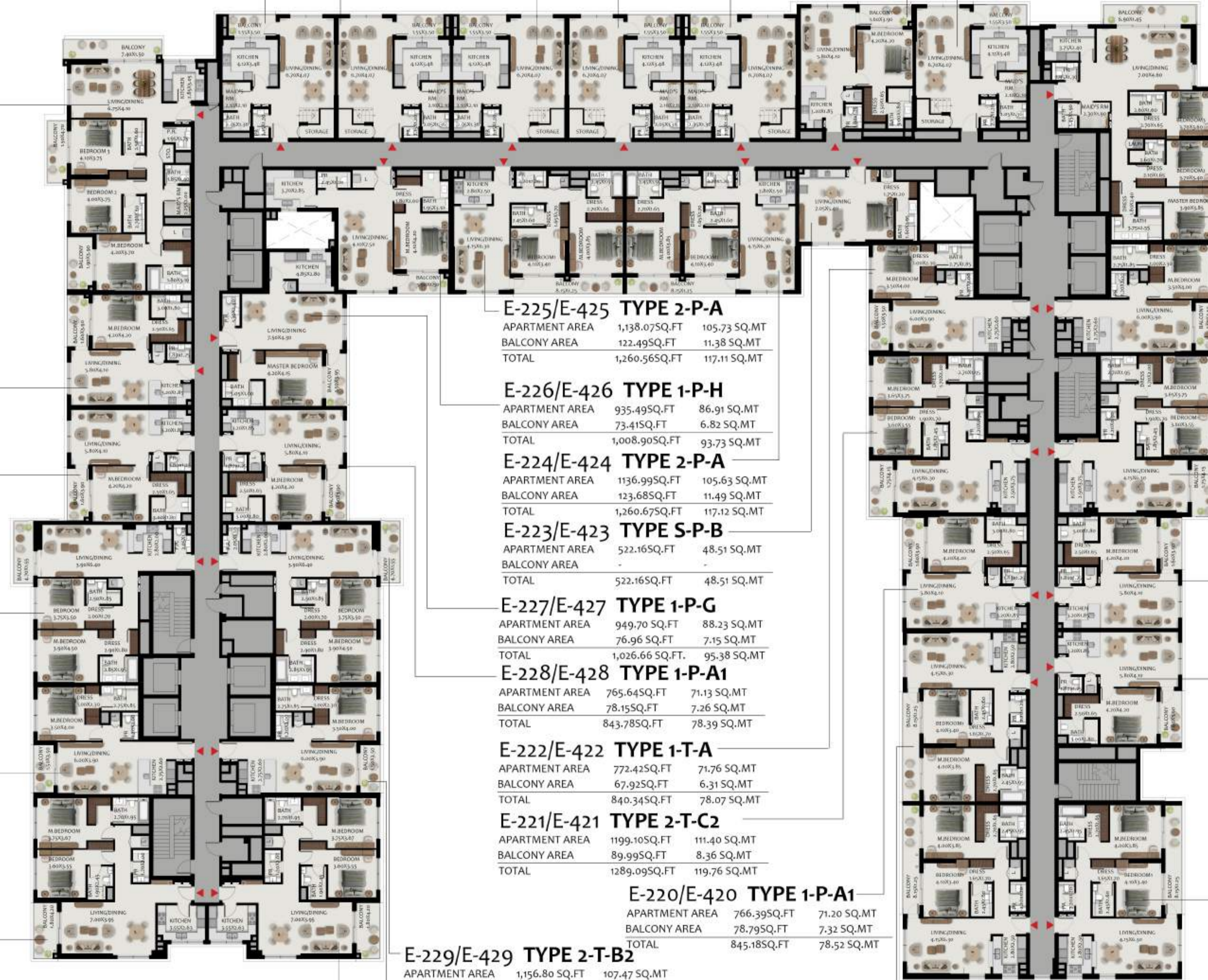
APARTMENT AREA	766.61SQ.FT	71.22 SQ.MT
BALCONY AREA	79.33SQ.FT	7.37 SQ.MT
TOTAL	845.94SQ.FT	78.59 SQ.MT

E-216/E-416 TYPE 1-P-A1

APARTMENT AREA	763.91SQ.FT	70.97 SQ.MT
BALCONY AREA	81.38SQ.FT	7.56 SQ.MT
TOTAL	845.29SQ.FT	78.53 SQ.MT

E-217/E-417 TYPE 2-P-A

APARTMENT AREA	1,142.27SQ.FT	106.12 SQ.MT
BALCONY AREA	127.12SQ.FT	11.81 SQ.MT
TOTAL	1,269.39SQ.FT	117.93 SQ.MT



E-225/E-425 TYPE 2-P-A

APARTMENT AREA	1,138.07SQ.FT	105.73 SQ.MT
BALCONY AREA	122.49SQ.FT	11.38 SQ.MT
TOTAL	1,260.56SQ.FT	117.11 SQ.MT

E-226/E-426 TYPE 1-P-H

APARTMENT AREA	935.49SQ.FT	86.91 SQ.MT
BALCONY AREA	73.41SQ.FT	6.82 SQ.MT
TOTAL	1,008.90SQ.FT	93.73 SQ.MT

E-224/E-424 TYPE 2-P-A

APARTMENT AREA	1,136.99SQ.FT	105.63 SQ.MT
BALCONY AREA	123.68SQ.FT	11.49 SQ.MT
TOTAL	1,260.67SQ.FT	117.12 SQ.MT

E-223/E-423 TYPE S-P-B

APARTMENT AREA	522.16SQ.FT	48.51 SQ.MT
BALCONY AREA		
TOTAL	522.16SQ.FT	48.51 SQ.MT

E-227/E-427 TYPE 1-P-G

APARTMENT AREA	949.70 SQ.FT	88.23 SQ.MT
BALCONY AREA	76.96 SQ.FT	7.15 SQ.MT
TOTAL	1,026.66 SQ.FT	95.38 SQ.MT

E-228/E-428 TYPE 1-P-A1

APARTMENT AREA	765.64SQ.FT	71.13 SQ.MT
BALCONY AREA	78.15SQ.FT	7.26 SQ.MT
TOTAL	843.78SQ.FT	78.39 SQ.MT

E-222/E-422 TYPE 1-T-A

APARTMENT AREA	772.42SQ.FT	71.76 SQ.MT
BALCONY AREA	67.92SQ.FT	6.31 SQ.MT
TOTAL	840.34SQ.FT	78.07 SQ.MT

E-221/E-421 TYPE 2-T-C2

APARTMENT AREA	1,199.10SQ.FT	111.40 SQ.MT
BALCONY AREA	89.99SQ.FT	8.36 SQ.MT
TOTAL	1,289.09SQ.FT	119.76 SQ.MT

E-220/E-420 TYPE 1-P-A1

APARTMENT AREA	766.39SQ.FT	71.20 SQ.MT
BALCONY AREA	78.79SQ.FT	7.32 SQ.MT
TOTAL	845.18SQ.FT	78.52 SQ.MT

E-229/E-429 TYPE 2-T-B2

APARTMENT AREA	1,156.80 SQ.FT	107.47 SQ.MT
BALCONY AREA	83.42 SQ.FT	7.75 SQ.MT
TOTAL	1,240.22 SQ.FT	115.22 SQ.MT

E-219/E-419 TYPE 2-P-A

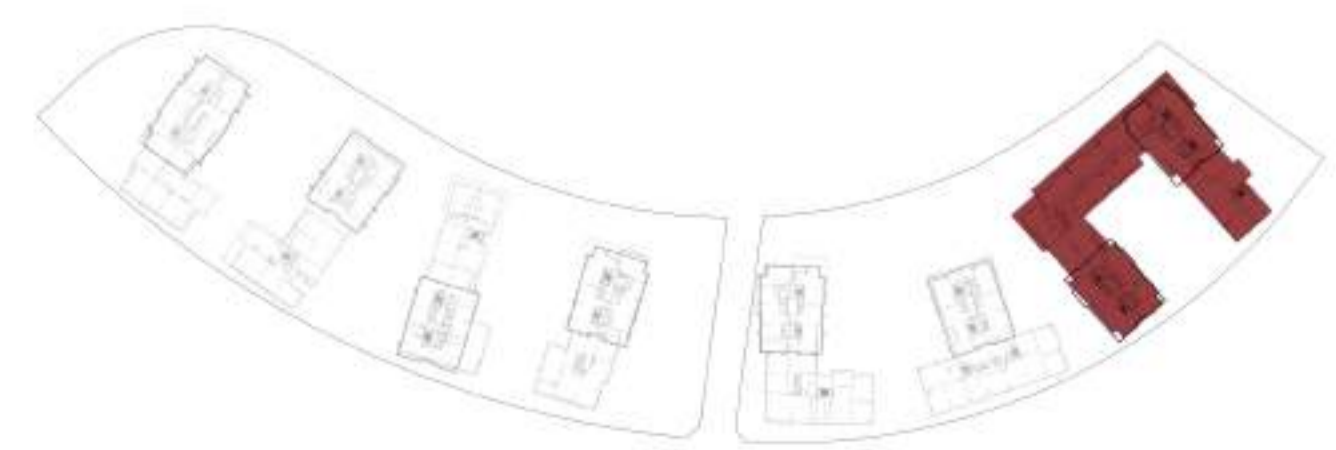
APARTMENT AREA	1,135.16SQ.FT	105.46 SQ.MT
BALCONY AREA	123.57SQ.FT	11.48 SQ.MT
TOTAL	1,258.73SQ.FT	116.94 SQ.MT

E-230/E-430 TYPE 1-T-A

APARTMENT AREA	773.17SQ.FT	71.83 SQ.MT
BALCONY AREA	67.92SQ.FT	6.31 SQ.MT
TOTAL	841.09SQ.FT	78.14 SQ.MT

E-218/E-418 TYPE 2-P-A

APARTMENT AREA	1,135.92SQ.FT	105.53 SQ.MT
BALCONY AREA	124.54SQ.FT	11.57 SQ.MT
TOTAL	1,260.45SQ.FT	117.10 SQ.MT



All room dimensions are in metric and measured to structural elements and exclude wall finishes and construction tolerances. Calculation of suite area is measured as the area bounded by the centerline of demising or party walls separating one unit from another unit, the exterior surface of all exterior walls and the exterior surface of the corridor wall on enclosing and abutting the unit. Calculation of Terrace area is measured as the area bounded by the centerlines of demising or party walls separating one unit from another unit, the outermost face of the enclosing guard and the external face of the site abutting the balcony. All materials, dimensions & drawings features and amenities are approximate at the time of printing. Information subject to change without notice. Actual suite areas may vary from the stated area. Drawings are not to scale. The developer reserves the right to make revisions

BUILDING 2E - LEVEL 03 & 05 | PODIUM

TYPE 2D-P-A UL

APARTMENT AREA	1554.31SQ.FT	144.40 SQ.MT
BALCONY AREA	137.02SQ.FT	12.73 SQ.MT
TOTAL	1691.33SQ.FT	157.13 SQ.MT

E-304/E-504 TYPE 3-P-A1

APARTMENT AREA	1628.15 SQ.FT	151.26 SQ.MT
BALCONY AREA	296.65 SQ.FT	27.56 SQ.MT
TOTAL	1924.80 SQ.FT	178.82 SQ.MT

E-303/E-503 TYPE 1-P-A1

APARTMENT AREA	761.22SQ.FT	70.72 SQ.MT
BALCONY AREA	79.87SQ.FT	7.42 SQ.MT
TOTAL	841.09SQ.FT	78.14 SQ.MT

E-302/E-502 TYPE 1-P-A1

APARTMENT AREA	764.99SQ.FT	71.07 SQ.MT
BALCONY AREA	78.15SQ.FT	7.26 SQ.MT
TOTAL	843.14SQ.FT	78.33 SQ.MT

E-301/E-501 TYPE 2-T-B2

APARTMENT AREA	1155.08 SQ.FT	107.31 SQ.MT
BALCONY AREA	84.39 SQ.FT	7.84 SQ.MT
TOTAL	1239.46 SQ.FT	115.15 SQ.MT

E-327/E-527 TYPE 1-T-A

APARTMENT AREA	772.74SQ.FT	71.79 SQ.MT
BALCONY AREA	67.92SQ.FT	6.31 SQ.MT
TOTAL	840.66SQ.FT	78.10 SQ.MT

E-326/E-526 TYPE 2-T-C1

APARTMENT AREA	1202.97SQ.FT	111.76 SQ.MT
BALCONY AREA	92.35SQ.FT	8.58 SQ.MT
TOTAL	1295.33SQ.FT	120.34 SQ.MT

TYPE 2D-P-A UL

APARTMENT AREA	1551.08SQ.FT	144.10 SQ.MT
BALCONY AREA	124.43SQ.FT	11.56 SQ.MT
TOTAL	1675.51SQ.FT	155.66 SQ.MT

TYPE 2D-P-A UL

APARTMENT AREA	1550.97SQ.FT	144.09 SQ.MT
BALCONY AREA	124.86SQ.FT	11.60 SQ.MT
TOTAL	1675.83SQ.FT	155.69 SQ.MT

TYPE 2D-P-A UL

APARTMENT AREA	1551.40SQ.FT	144.13 SQ.MT
BALCONY AREA	124.65SQ.FT	11.58 SQ.MT
TOTAL	1676.05SQ.FT	155.71 SQ.MT

TYPE 2D-P-A UL

APARTMENT AREA	1554.42SQ.FT	144.41 SQ.MT
BALCONY AREA	124.75SQ.FT	11.59 SQ.MT
TOTAL	1679.17SQ.FT	156.00 SQ.MT

E-305/E-505 TYPE 1-P-A1

APARTMENT AREA	771.34SQ.FT	71.66 SQ.MT
BALCONY AREA	78.79SQ.FT	7.32 SQ.MT
TOTAL	850.13SQ.FT	78.98 SQ.MT

TYPE 2D-P-A UL

APARTMENT AREA	1575.51SQ.FT	146.37 SQ.MT
BALCONY AREA	138.42SQ.FT	12.86 SQ.MT
TOTAL	1713.94SQ.FT	159.23 SQ.MT

E-306/E-506 TYPE 3-T-C

APARTMENT AREA	1680.89SQ.FT	156.16 SQ.MT
BALCONY AREA	116.36 SQ.FT	10.81 SQ.MT
TOTAL	1797.25SQ.FT	166.97 SQ.MT

E-307/E-507 TYPE 1-T-A

APARTMENT AREA	771.45SQ.FT	71.67 SQ.MT
BALCONY AREA	67.92SQ.FT	6.31 SQ.MT
TOTAL	839.37SQ.FT	77.98 SQ.MT

E-308/E-508 TYPE 2-T-C2

APARTMENT AREA	1202.54SQ.FT	111.72 SQ.MT
BALCONY AREA	89.77SQ.FT	8.34 SQ.MT
TOTAL	1292.32SQ.FT	120.06 SQ.MT

E-309/E-509 TYPE 1-P-A1

APARTMENT AREA	766.82SQ.FT	71.24 SQ.MT
BALCONY AREA	79.33SQ.FT	7.37 SQ.MT
TOTAL	846.15SQ.FT	78.61 SQ.MT

E-310/E-510 TYPE 1-P-A1

APARTMENT AREA	764.35SQ.FT	71.01 SQ.MT
BALCONY AREA	80.19SQ.FT	7.45 SQ.MT
TOTAL	844.54SQ.FT	78.46 SQ.MT

E-311/E-511 TYPE 2-P-A

APARTMENT AREA	1142.27SQ.FT	106.12 SQ.MT
BALCONY AREA	127.12SQ.FT	11.81 SQ.MT
TOTAL	1269.39SQ.FT	117.93 SQ.MT

E-319/E-519 TYPE 2-P-A

APARTMENT AREA	1138.07SQ.FT	105.73 SQ.MT
BALCONY AREA	122.49SQ.FT	11.38 SQ.MT
TOTAL	1260.56SQ.FT	117.11 SQ.MT

E-320/E-520 TYPE 1-P-H

APARTMENT AREA	934.74SQ.FT	86.84 SQ.MT
BALCONY AREA	73.30SQ.FT	6.81 SQ.MT
TOTAL	1008.04SQ.FT	93.65 SQ.MT

E-318/E-518 TYPE 2-P-A

APARTMENT AREA	1138.07SQ.FT	105.73 SQ.MT
BALCONY AREA	122.49SQ.FT	11.38 SQ.MT
TOTAL	1260.56SQ.FT	117.11 SQ.MT

E-317/E-517 TYPE S-P-B

APARTMENT AREA	522.59SQ.FT	48.55 SQ.MT
BALCONY AREA	-	-
TOTAL	522.59SQ.FT	48.55 SQ.MT

E-321/E-521 TYPE 1-P-G

APARTMENT AREA	950.24 SQ.FT	88.28 SQ.MT
BALCONY AREA	76.96 SQ.FT	7.15 SQ.MT
TOTAL	1027.20 SQ.FT	95.43 SQ.MT

E-322/E-522 TYPE 1-P-A1

APARTMENT AREA	765.64SQ.FT	71.13 SQ.MT
BALCONY AREA	78.15SQ.FT	7.26 SQ.MT
TOTAL	843.78SQ.FT	78.39 SQ.MT

E-316/E-516 TYPE 1-T-A

APARTMENT AREA	772.42SQ.FT	71.76 SQ.MT
BALCONY AREA	67.92SQ.FT	6.31 SQ.MT
TOTAL	840.34SQ.FT	78.07 SQ.MT

E-315/E-515 TYPE 2-T-C2

APARTMENT AREA	1199.75SQ.FT	111.46 SQ.MT
BALCONY AREA	89.99SQ.FT	8.36 SQ.MT
TOTAL	1289.75SQ.FT	119.82 SQ.MT

E-314/E-514 TYPE 1-P-A1

APARTMENT AREA	766.61SQ.FT	71.22 SQ.MT
BALCONY AREA	79.33SQ.FT	7.37 SQ.MT
TOTAL	845.94SQ.FT	78.59 SQ.MT

E-323/E-523 TYPE 2-T-B2

APARTMENT AREA	1156.80 SQ.FT	107.47 SQ.MT
BALCONY AREA	83.42 SQ.FT	7.75 SQ.MT
TOTAL	1240.22 SQ.FT	115.22 SQ.MT

E-313/E-513 TYPE 2-P-A

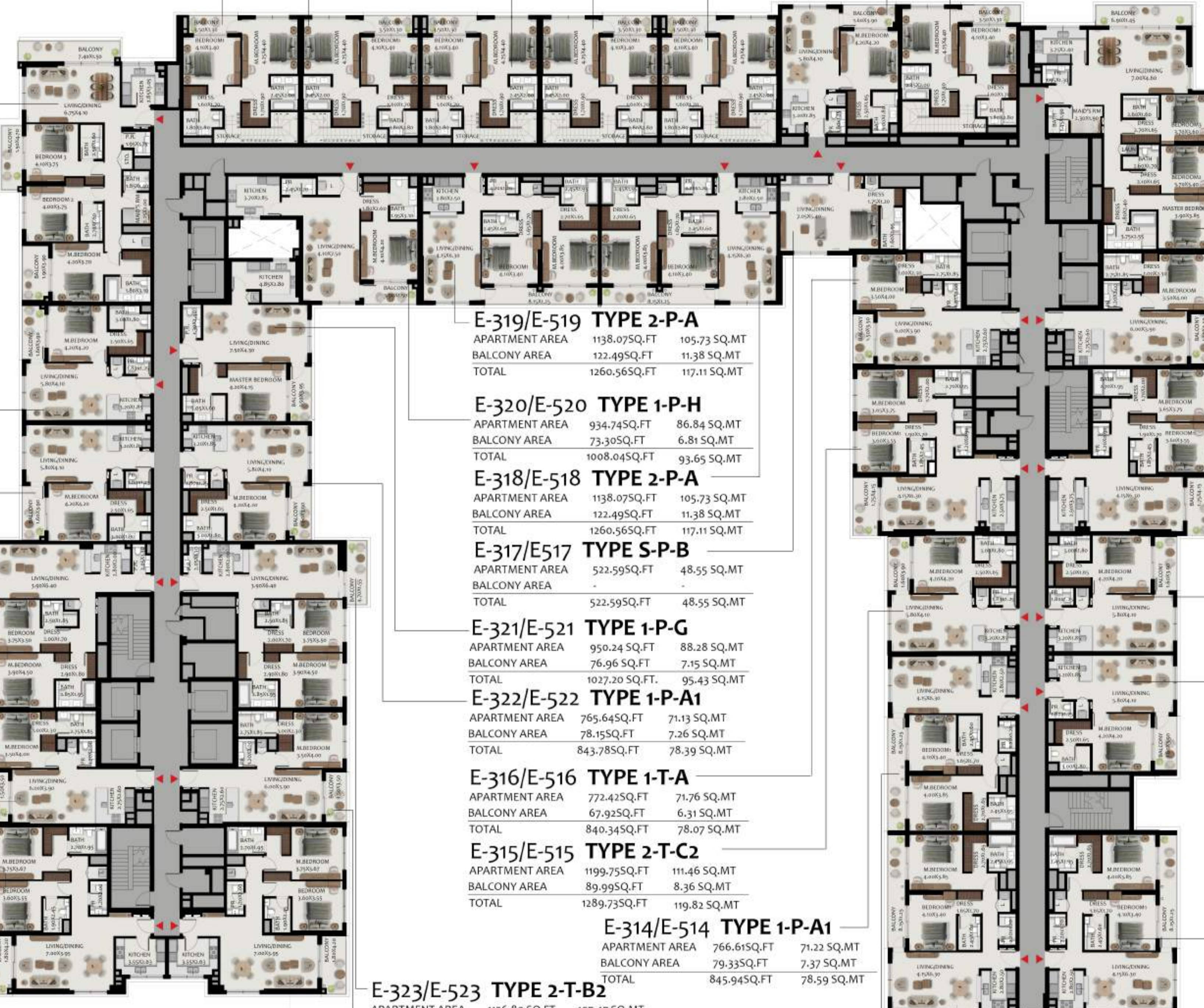
APARTMENT AREA	1135.16SQ.FT	105.46 SQ.MT
BALCONY AREA	124.54SQ.FT	11.57 SQ.MT
TOTAL	1259.70SQ.FT	117.03 SQ.MT

E-312/E-512 TYPE 2-P-A

APARTMENT AREA	1135.92SQ.FT	105.53 SQ.MT
BALCONY AREA	124.54SQ.FT	11.57 SQ.MT
TOTAL	1260.45SQ.FT	117.10 SQ.MT

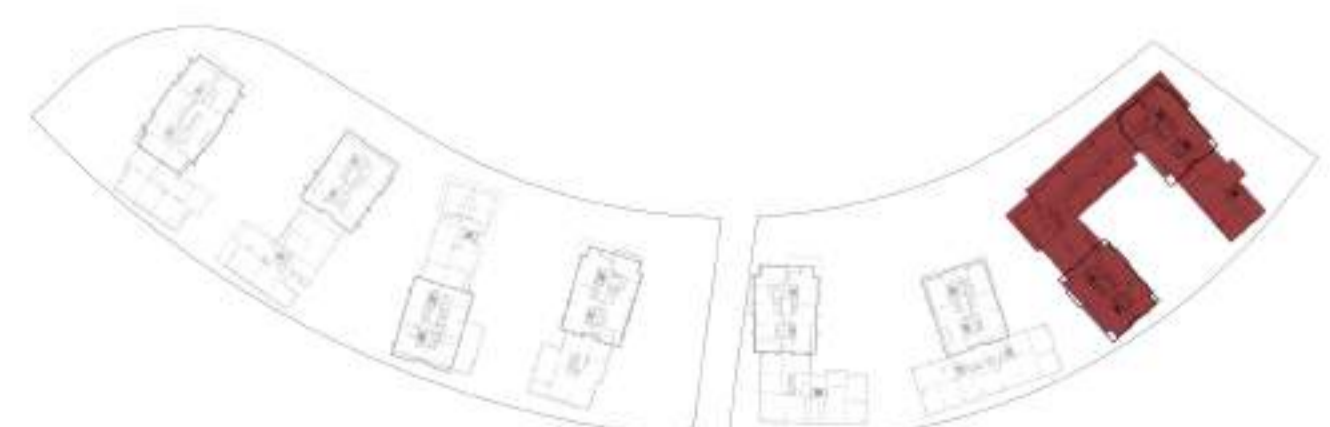
E-324/E-524 TYPE 1-T-A

APARTMENT AREA	773.17SQ.FT	71.83 SQ.MT
BALCONY AREA	67.92SQ.FT	6.31 SQ.MT
TOTAL	841.09SQ.FT	78.14 SQ.MT



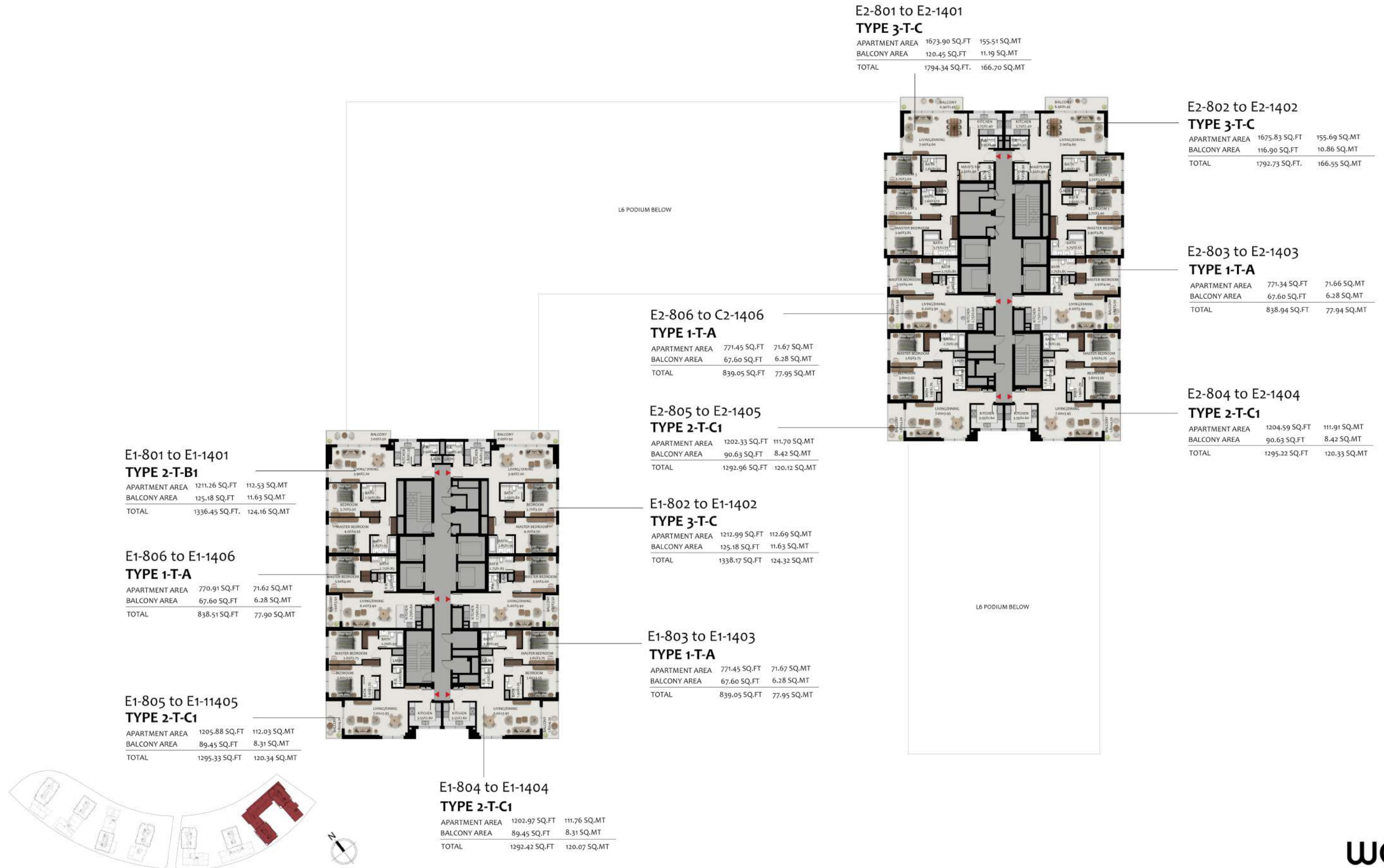
E-325/E-525 TYPE 2-T-C1

APARTMENT AREA	1211.26SQ.FT	112.53 SQ.MT
BALCONY AREA	92.35SQ.FT	8.58 SQ.MT
TOTAL	1303.62SQ.FT	121.11 SQ.MT



All room dimensions are in metric and measured to structural elements and exclude wall finishes and construction tolerances. Calculation of suite area is measured as the area bounded by the centerline of demising or party walls separating one unit from another unit, the exterior surface of all exterior walls and the exterior surface of the corridor wall on enclosing and abutting the unit. Calculation of Terrace area is measured as the area bounded by the centerlines of demising or party walls separating one unit from another unit, the outermost face of the enclosing guard and the external face of the site abutting the balcony. All materials, dimensions & drawings features and amenities are approximate at the time of printing. Information subject to change without notice. Actual suite areas may vary from the stated area. Drawings are not to scale. The developer reserves the right to make revisions





All room dimensions are in metric and measured to structural elements and exclude wall finishes and construction tolerances. Calculation of suite area is measured as the area bounded by the centerline of demising or party walls separating one unit from another unit, the exterior surface of all exterior walls and the exterior surface of the corridor wall on enclosing and abutting the unit. Calculation of Terrace area is measured as the area bounded by the centerlines of demising or party walls separating one unit from another unit, the outermost face of the enclosing guard and the external face of the site abutting the balcony. All materials, dimensions & drawings features and amenities are approximate at the time of printing, Information subject to change without notice. Actual suite areas may vary from the stated area. Drawings are not to scale. The developer reserves the right to make revisions

E2-1501 TYPE 3P-T-B LL

APARTMENT AREA	2740 SQ.FT	254.55 SQ.MT
BALCONY AREA	426 SQ.FT	39.58 SQ.MT
TOTAL	3166 SQ.FT.	294.13 SQ.MT

E2-1502 TYPE 3P-T-B LL

APARTMENT AREA	2740 SQ.FT	254.55 SQ.MT
BALCONY AREA	426 SQ.FT	39.58 SQ.MT
TOTAL	3166 SQ.FT.	294.13 SQ.MT

E2-1506 TYPE 1-T-A

APARTMENT AREA	784.00SQ.FT	72.84 SQ.MT
BALCONY AREA	57.00SQ.FT	5.30 SQ.MT
TOTAL	841.00SQ.FT	78.13 SQ.MT

E2-1503 TYPE 1-T-A

APARTMENT AREA	784.00SQ.FT	72.84 SQ.MT
BALCONY AREA	57.00SQ.FT	5.30 SQ.MT
TOTAL	841.00SQ.FT	78.13 SQ.MT

E2-1505 TYPE 2-T-C1

APARTMENT AREA	1,252.00SQ.FT	116.31 SQ.MT
BALCONY AREA	81.00SQ.FT	7.52 SQ.MT
TOTAL	1,333.00SQ.FT	123.84 SQ.MT

E2-1504 TYPE 2-T-C1

APARTMENT AREA	1,252.00SQ.FT	116.31 SQ.MT
BALCONY AREA	81.00SQ.FT	7.52 SQ.MT
TOTAL	1,333.00SQ.FT	123.84 SQ.MT

E1-1501 TYPE 2-T-B1

APARTMENT AREA	1,211.26 SQ.FT	112.53 SQ.MT
BALCONY AREA	125.18 SQ.FT	11.63 SQ.MT
TOTAL	1,336.45 SQ.FT	124.16 SQ.MT

E1-1502 TYPE 2-T-B1

APARTMENT AREA	1,213.09 SQ.FT	112.70 SQ.MT
BALCONY AREA	125.18 SQ.FT	11.63 SQ.MT
TOTAL	1,338.28 SQ.FT	124.33 SQ.MT

E1-1506 TYPE 1-T-A

APARTMENT AREA	771.02 SQ.FT	71.63 SQ.MT
BALCONY AREA	67.60 SQ.FT	6.28 SQ.MT
TOTAL	838.62 SQ.FT	77.91 SQ.MT

E1-1503 TYPE 1-T-A

APARTMENT AREA	771.45 SQ.FT	71.67 SQ.MT
BALCONY AREA	67.60 SQ.FT	6.28 SQ.MT
TOTAL	839.05 SQ.FT	77.95 SQ.MT

E1-1505 TYPE 2-T-C1

APARTMENT AREA	1,205.67 SQ.FT	112.01 SQ.MT
BALCONY AREA	89.45 SQ.FT	8.31 SQ.MT
TOTAL	1,295.11 SQ.FT	120.32 SQ.MT

E1-1504 TYPE 2-T-C1

APARTMENT AREA	1,202.97 SQ.FT	111.76 SQ.MT
BALCONY AREA	89.45 SQ.FT	8.31 SQ.MT
TOTAL	1292.42 SQ.FT	120.07 SQ.MT



All room dimensions are in metric and measured to structural elements and exclude wall finishes and construction tolerances. Calculation of suite area is measured as the area bounded by the centerline of demising or party walls separating one unit from another unit, the exterior surface of all exterior walls and the exterior surface of the corridor wall on enclosing and abutting the unit. Calculation of Terrace area is measured as the area bounded by the centerlines of demising or party walls separating one unit from another unit, the outermost face of the enclosing guard and the external face of the site abutting the balcony. All materials, dimensions & drawings features and amenities are approximate at the time of printing. Information subject to change without notice. Actual suite areas may vary from the stated area. Drawings are not to scale. The developer reserves the right to make revisions

TYPE 3P-T-B UL

APARTMENT AREA	2,709.71 SQ.FT	251.74 SQ.MT
BALCONY AREA	478.46 SQ.FT	44.45 SQ.MT
TOTAL	3,188.16 SQ.FT.	296.19 SQ.MT

TYPE 3P-T-B UL

APARTMENT AREA	2,703.68 SQ.FT	251.18 SQ.MT
BALCONY AREA	485.34 SQ.FT	45.09 SQ.MT
TOTAL	3,189.02 SQ.FT.	296.27 SQ.MT

PODIUM BELOW

E2-1604 TYPE 1-T-A

APARTMENT AREA	771.45 SQ.FT	71.67 SQ.MT
BALCONY AREA	67.60 SQ.FT	6.28 SQ.MT
TOTAL	839.05 SQ.FT	77.95 SQ.MT

E2-1601 TYPE 1-T-A

APARTMENT AREA	770.48 SQ.FT	71.58 SQ.MT
BALCONY AREA	67.60 SQ.FT	6.28 SQ.MT
TOTAL	838.08 SQ.FT	77.86 SQ.MT

E2-1603 TYPE 2-T-C1

APARTMENT AREA	1,202.22 SQ.FT	111.69 SQ.MT
BALCONY AREA	90.63 SQ.FT	8.42 SQ.MT
TOTAL	1,292.85 SQ.FT	120.11 SQ.MT

E2-1602 TYPE 2-T-C1

APARTMENT AREA	1,205.13 SQ.FT	111.96 SQ.MT
BALCONY AREA	90.63 SQ.FT	8.42 SQ.MT
TOTAL	1,295.76 SQ.FT	120.38 SQ.MT

E1-1601 TYPE 2-T-B1

APARTMENT AREA	1,211.26 SQ.FT	112.53 SQ.MT
BALCONY AREA	125.18 SQ.FT	11.63 SQ.MT
TOTAL	1,336.45 SQ.FT	124.16 SQ.MT

E1-1602 TYPE 2-T-B1

APARTMENT AREA	1,213.09 SQ.FT	112.70 SQ.MT
BALCONY AREA	125.18 SQ.FT	11.63 SQ.MT
TOTAL	1,338.28 SQ.FT	124.33 SQ.MT

E1-1606 TYPE 1-T-A

APARTMENT AREA	771.02 SQ.FT	71.63 SQ.MT
BALCONY AREA	67.60 SQ.FT	6.28 SQ.MT
TOTAL	838.62 SQ.FT	77.91 SQ.MT

E1-1603 TYPE 1-T-A

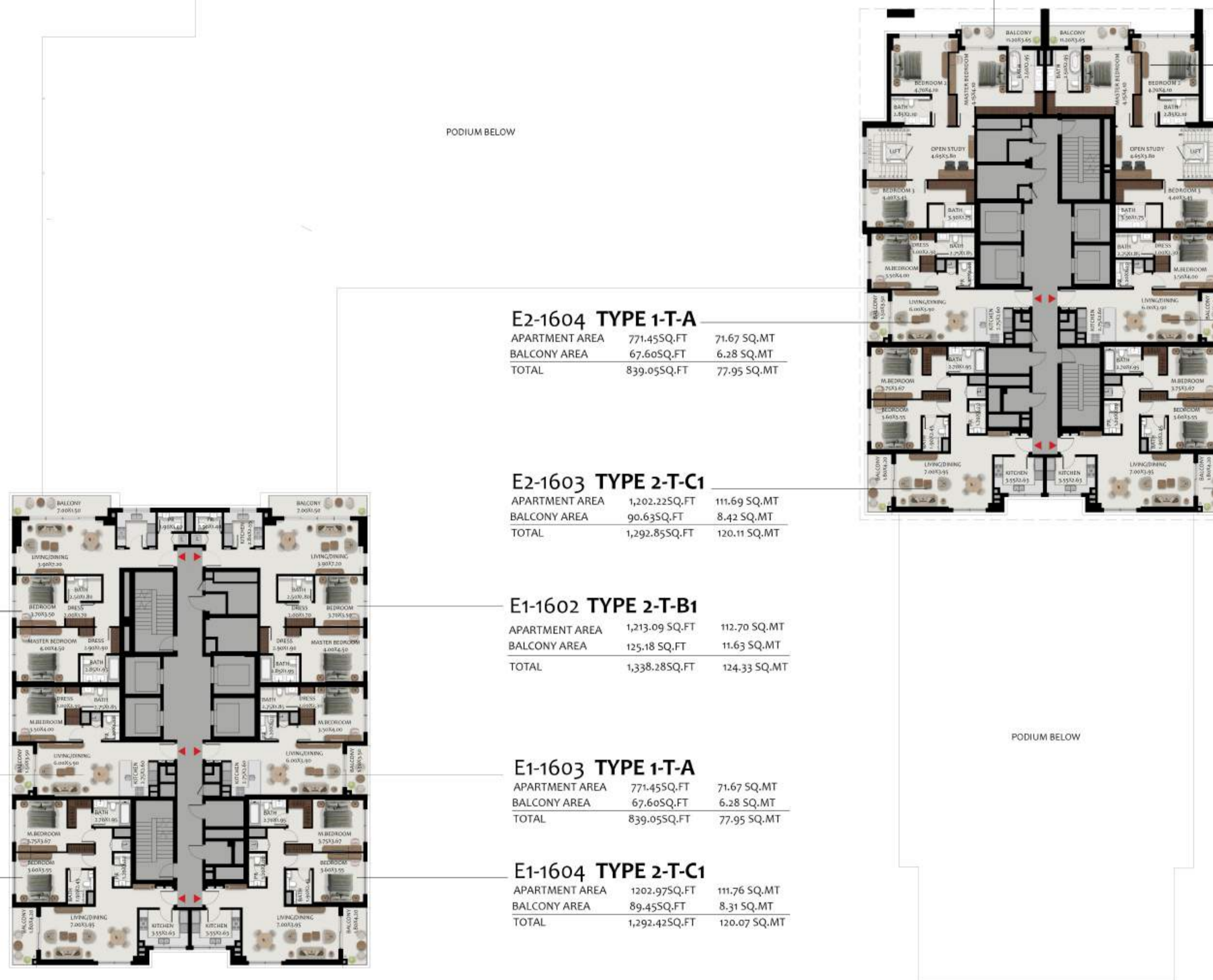
APARTMENT AREA	771.45 SQ.FT	71.67 SQ.MT
BALCONY AREA	67.60 SQ.FT	6.28 SQ.MT
TOTAL	839.05 SQ.FT	77.95 SQ.MT

E1-1605 TYPE 2-T-C1

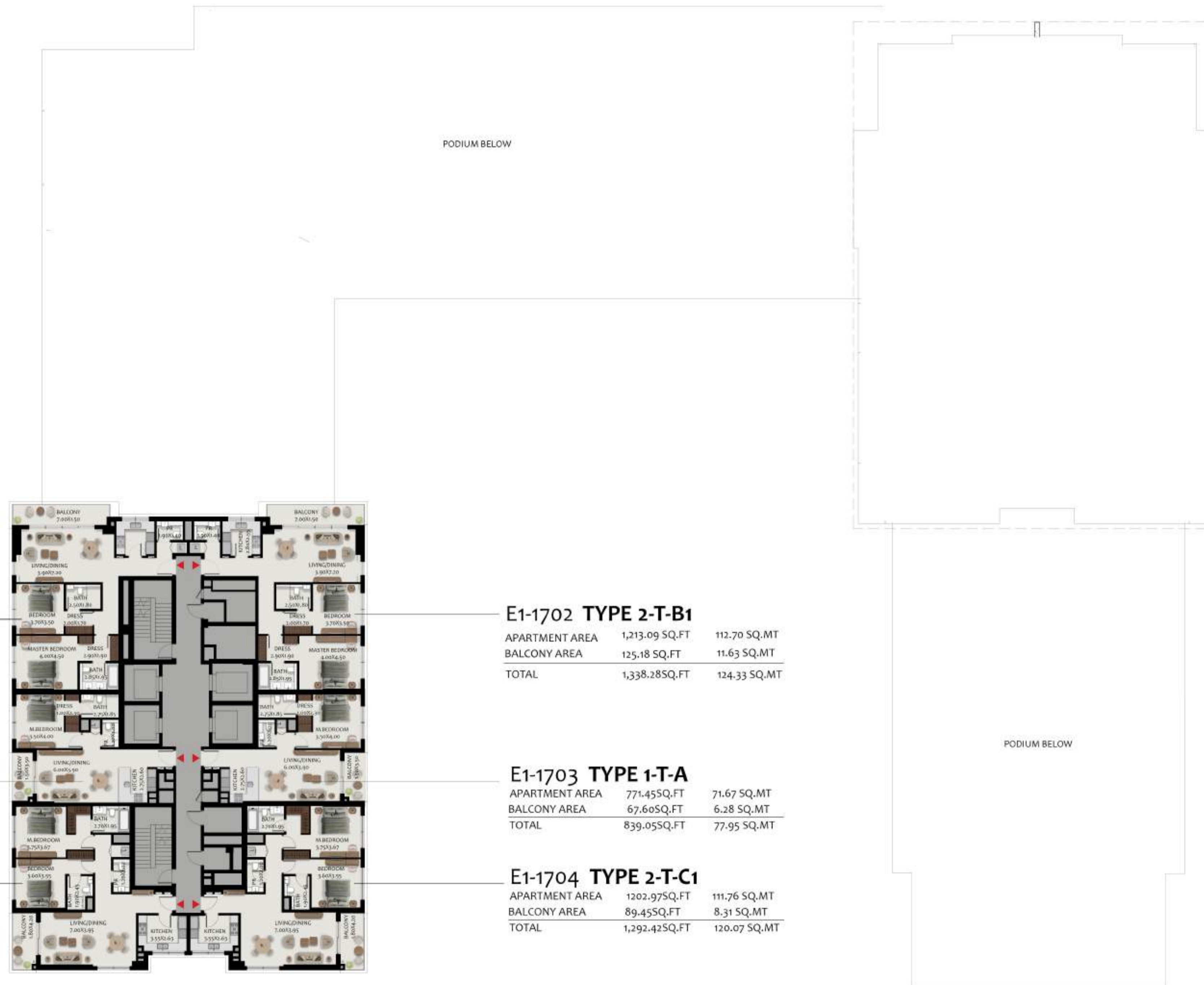
APARTMENT AREA	1,205.67 SQ.FT	112.01 SQ.MT
BALCONY AREA	89.45 SQ.FT	8.31 SQ.MT
TOTAL	1,295.11 SQ.FT	120.32 SQ.MT

E1-1604 TYPE 2-T-C1

APARTMENT AREA	1,202.97 SQ.FT	111.76 SQ.MT
BALCONY AREA	89.45 SQ.FT	8.31 SQ.MT
TOTAL	1,292.42 SQ.FT	120.07 SQ.MT



All room dimensions are in metric and measured to structural elements and exclude wall finishes and construction tolerances. Calculation of suite area is measured as the area bounded by the centerline of demising or party walls separating one unit from another unit, the exterior surface of all exterior walls and the exterior surface of the corridor wall on enclosing and abutting the unit. Calculation of Terrace area is measured as the area bounded by the centerlines of demising or party walls separating one unit from another unit, the outermost face of the enclosing guard and the external face of the site abutting the balcony. All materials, dimensions & drawings features and amenities are approximate at the time of printing. Information subject to change without notice. Actual suite areas may vary from the stated area. Drawings are not to scale. The developer reserves the right to make revisions.



E1-1701 TYPE 2-T-B1

APARTMENT AREA	1,211.26 SQ.FT	112.53 SQ.MT
BALCONY AREA	125.18 SQ.FT	11.63 SQ.MT
TOTAL	1,336.45 SQ.FT	124.16 SQ.MT

E1-1702 TYPE 2-T-B1

APARTMENT AREA	1,213.09 SQ.FT	112.70 SQ.MT
BALCONY AREA	125.18 SQ.FT	11.63 SQ.MT
TOTAL	1,338.28 SQ.FT	124.33 SQ.MT

E1-1706 TYPE 1-T-A

APARTMENT AREA	771.02 SQ.FT	71.63 SQ.MT
BALCONY AREA	67.60 SQ.FT	6.28 SQ.MT
TOTAL	838.62 SQ.FT	77.91 SQ.MT

E1-1703 TYPE 1-T-A

APARTMENT AREA	771.45 SQ.FT	71.67 SQ.MT
BALCONY AREA	67.60 SQ.FT	6.28 SQ.MT
TOTAL	839.05 SQ.FT	77.95 SQ.MT

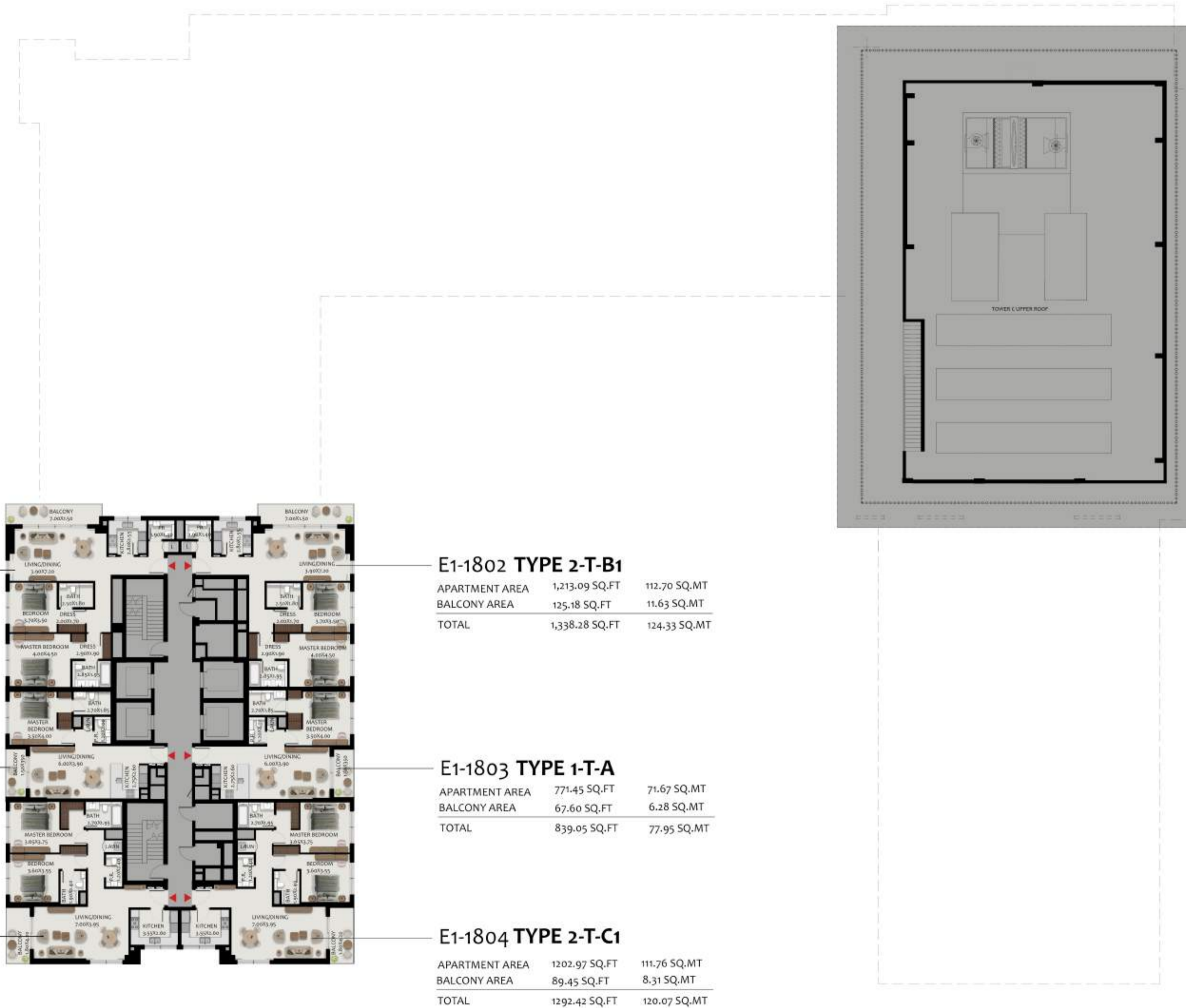
E1-1705 TYPE 2-T-C1

APARTMENT AREA	1,205.67 SQ.FT	112.01 SQ.MT
BALCONY AREA	89.45 SQ.FT	8.31 SQ.MT
TOTAL	1,295.11 SQ.FT	120.32 SQ.MT

E1-1704 TYPE 2-T-C1

APARTMENT AREA	1,202.97 SQ.FT	111.76 SQ.MT
BALCONY AREA	89.45 SQ.FT	8.31 SQ.MT
TOTAL	1,292.42 SQ.FT	120.07 SQ.MT





E1-1801 TYPE 2-T-B1

APARTMENT AREA	1,211.26 SQ.FT	112.53 SQ.MT
BALCONY AREA	125.18 SQ.FT	11.63 SQ.MT
TOTAL	1,336.45 SQ.FT	124.16 SQ.MT

E1-1802 TYPE 2-T-B1

APARTMENT AREA	1,213.09 SQ.FT	112.70 SQ.MT
BALCONY AREA	125.18 SQ.FT	11.63 SQ.MT
TOTAL	1,338.28 SQ.FT	124.33 SQ.MT

E1-1806 TYPE 1-T-A

APARTMENT AREA	771.02 SQ.FT	71.63 SQ.MT
BALCONY AREA	67.60 SQ.FT	6.28 SQ.MT
TOTAL	838.62 SQ.FT	77.91 SQ.MT

E1-1803 TYPE 1-T-A

APARTMENT AREA	771.45 SQ.FT	71.67 SQ.MT
BALCONY AREA	67.60 SQ.FT	6.28 SQ.MT
TOTAL	839.05 SQ.FT	77.95 SQ.MT

E1-1805 TYPE 2-T-C1

APARTMENT AREA	1,205.45 SQ.FT	111.99 SQ.MT
BALCONY AREA	89.45 SQ.FT	8.31 SQ.MT
TOTAL	1,294.90 SQ.FT	120.30 SQ.MT

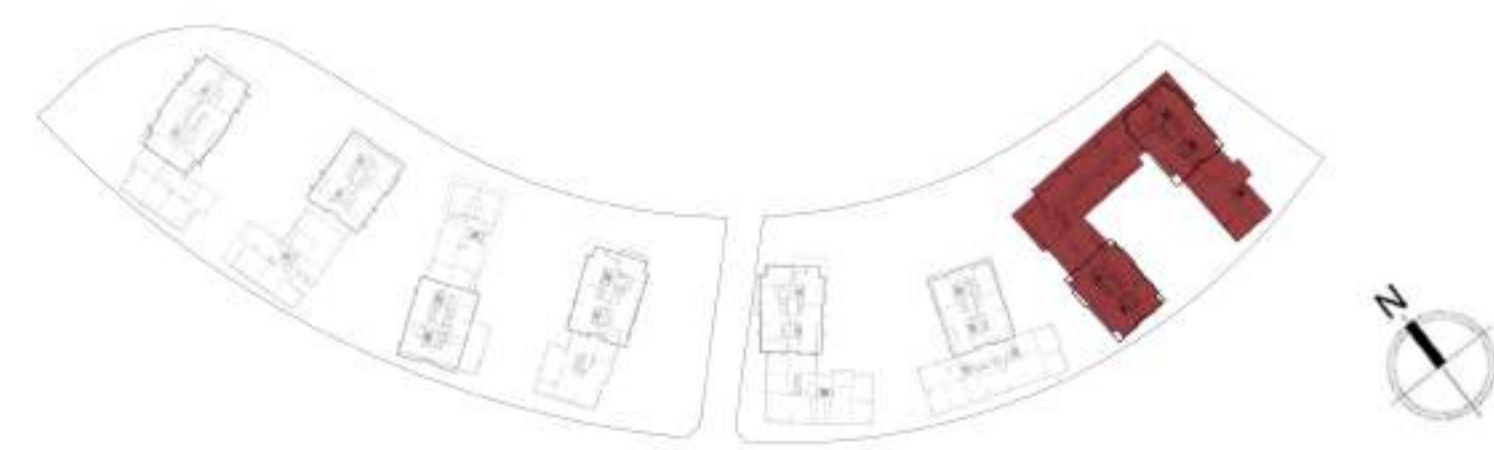
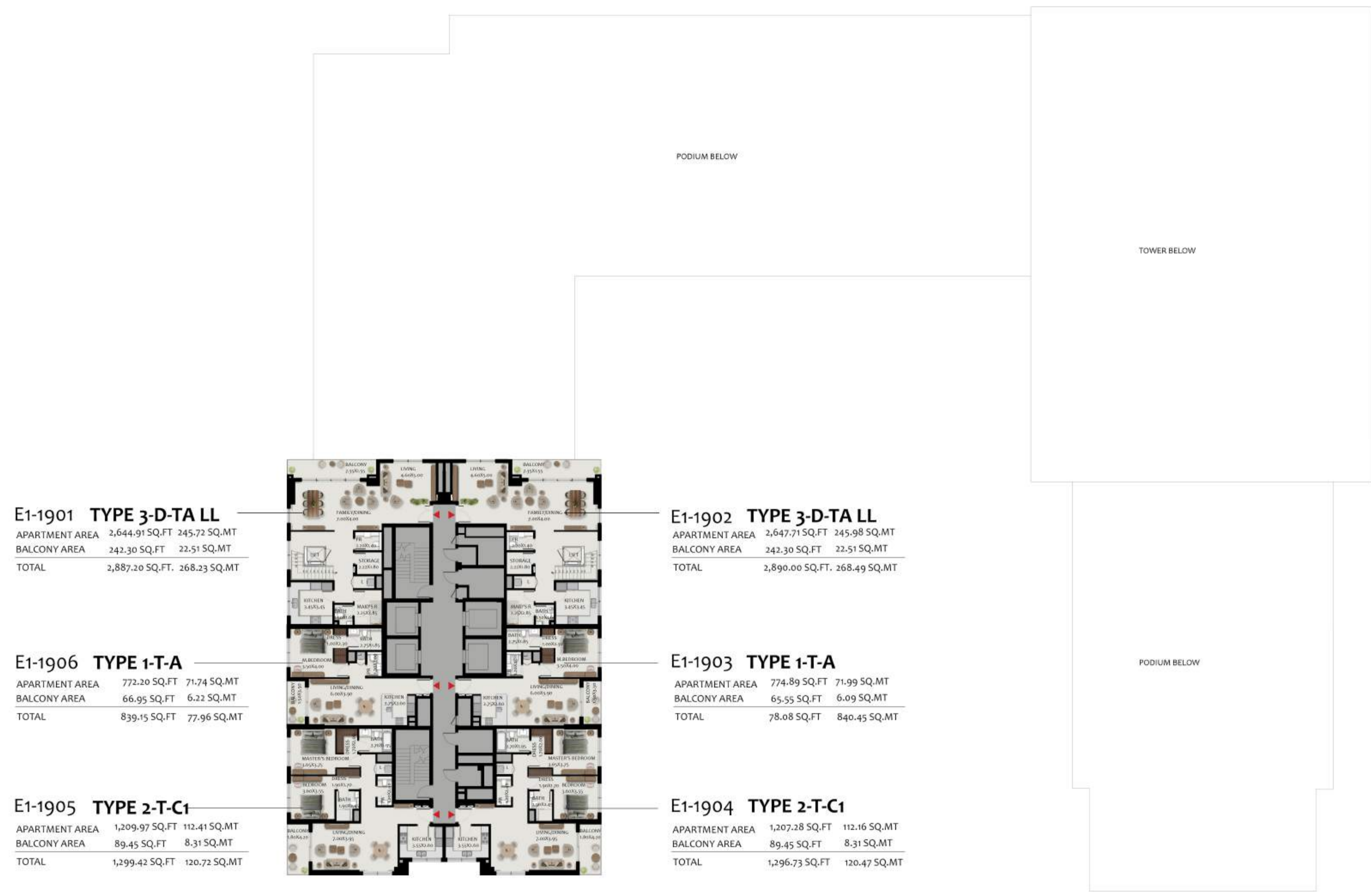
E1-1804 TYPE 2-T-C1

APARTMENT AREA	1202.97 SQ.FT	111.76 SQ.MT
BALCONY AREA	89.45 SQ.FT	8.31 SQ.MT
TOTAL	1292.42 SQ.FT	120.07 SQ.MT



All room dimensions are in metric and measured to structural elements and exclude wall finishes and construction tolerances. Calculation of suite area is measured as the area bounded by the centerline of demising or party walls separating one unit from another unit, the exterior surface of all exterior walls and the exterior surface of the corridor wall on enclosing and abutting the unit. Calculation of Terrace area is measured as the area bounded by the centerlines of demising or party walls separating one unit from another unit, the outermost face of the enclosing guard and the external face of the site abutting the balcony. All materials, dimensions & drawings features and amenities are approximate at the time of printing. Information subject to change without notice. Actual suite areas may vary from the stated area. Drawings are not to scale. The developer reserves the right to make revisions

BUILDING 2E - LEVEL 19 | E1 PENTHOUSE LOWER LEVEL



All room dimensions are in metric and measured to structural elements and exclude wall finishes and construction tolerances. Calculation of suite area is measured as the area bounded by the centerline of demising or party walls separating one unit from another unit, the exterior surface of all exterior walls and the exterior surface of the corridor wall on enclosing and abutting the unit. Calculation of Terrace area is measured as the area bounded by the centerlines of demising or party walls separating one unit from another unit, the outermost face of the enclosing guard and the external face of the site abutting the balcony. All materials, dimensions & drawings features and amenities are approximate at the time of printing. Information subject to change without notice. Actual suite areas may vary from the stated area. Drawings are not to scale. The developer reserves the right to make revisions



TYPE 3-D-TA UL

APARTMENT AREA	2,644.91 SQ.FT	245.72 SQ.MT
BALCONY AREA	242.30 SQ.FT	22.51 SQ.MT
TOTAL	2,887.20 SQ.FT.	268.23 SQ.MT

TYPE 3-D-TA UL

APARTMENT AREA	2,647.71 SQ.FT	245.98 SQ.MT
BALCONY AREA	242.30 SQ.FT	22.51 SQ.MT
TOTAL	2,890.00 SQ.FT.	268.49 SQ.MT

E1-2004 TYPE 1-T-A

APARTMENT AREA	772.31 SQ.FT	71.75 SQ.MT
BALCONY AREA	66.52 SQ.FT	6.18 SQ.MT
TOTAL	838.83 SQ.FT	77.93 SQ.MT

E1-2001 TYPE 1-T-A

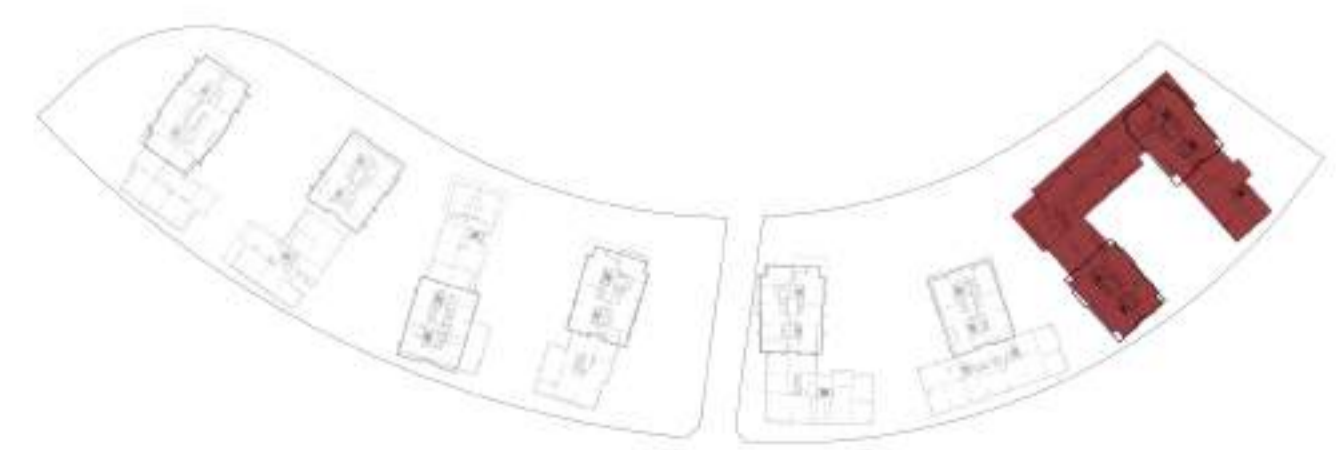
APARTMENT AREA	774.79 SQ.FT	71.98 SQ.MT
BALCONY AREA	64.48 SQ.FT	5.99 SQ.MT
TOTAL	839.26 SQ.FT	77.97 SQ.MT

E1-2003 TYPE 2-T-C1

APARTMENT AREA	1,211.05 SQ.FT	112.51 SQ.MT
BALCONY AREA	89.45 SQ.FT	8.31 SQ.MT
TOTAL	1,300.50 SQ.FT	120.82 SQ.MT

E1-2002 TYPE 2-T-C1

APARTMENT AREA	1208.46 SQ.FT	112.27 SQ.MT
BALCONY AREA	89.45 SQ.FT	8.31 SQ.MT
TOTAL	1,297.91 SQ.FT	120.58 SQ.MT



All room dimensions are in metric and measured to structural elements and exclude wall finishes and construction tolerances. Calculation of suite area is measured as the area bounded by the centerline of demising or party walls separating one unit from another unit, the exterior surface of all exterior walls and the exterior surface of the corridor wall on enclosing and abutting the unit. Calculation of Terrace area is measured as the area bounded by the centerlines of demising or party walls separating one unit from another unit, the outermost face of the enclosing guard and the external face of the site abutting the balcony. All materials, dimensions & drawings features and amenities are approximate at the time of printing. Information subject to change without notice. Actual suite areas may vary from the stated area. Drawings are not to scale. The developer reserves the right to make revisions