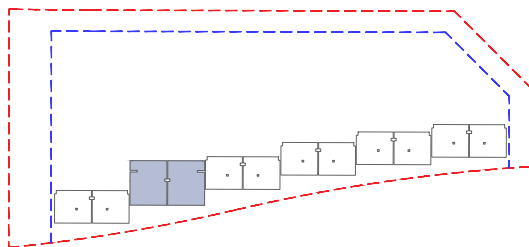
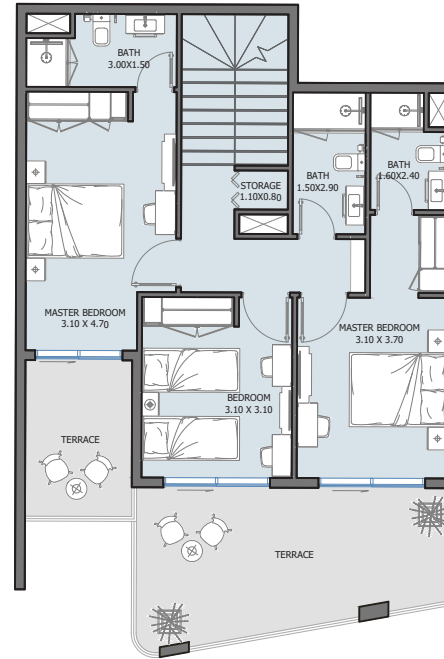
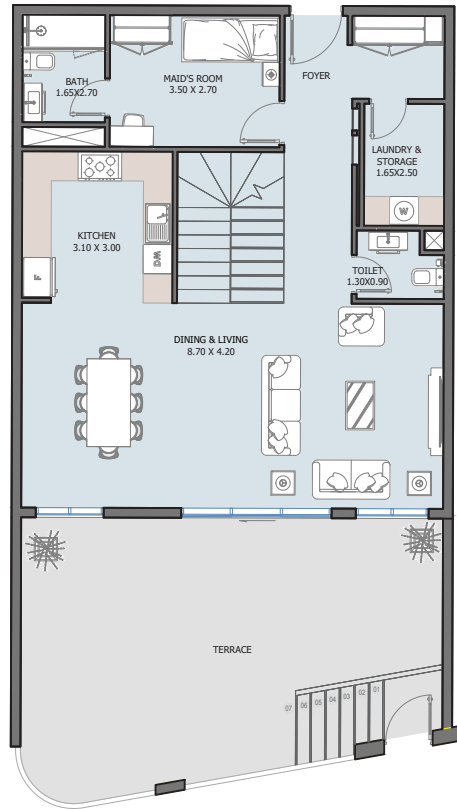




BAIA

BAIA

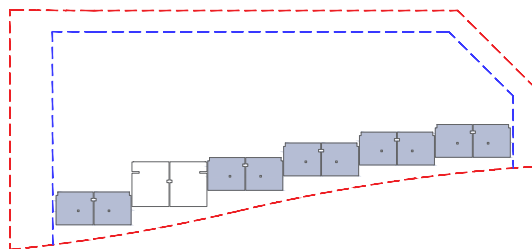
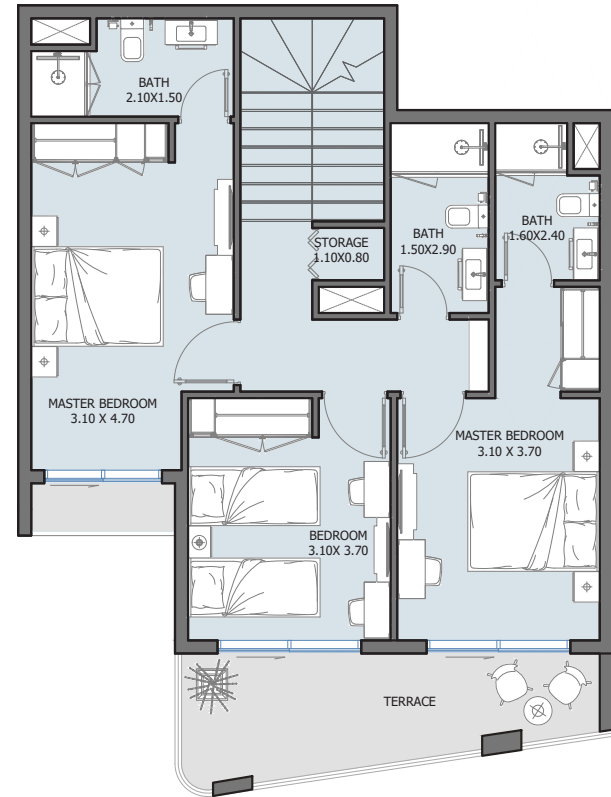
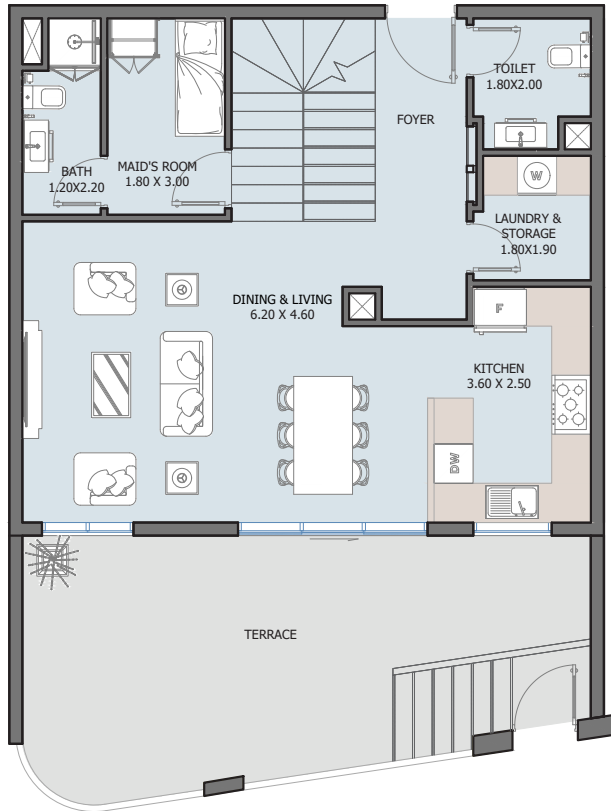


3B | Type B

B2 Floor

Internal Area	1789.11 to 1801.77 sq.ft
Outdoor Area	503.43 to 805.35 sq.ft
Total Area	2305.20 to 2603.46 sq.ft

BAIA

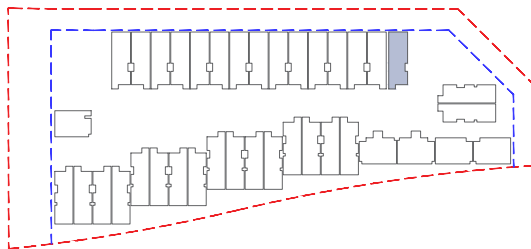
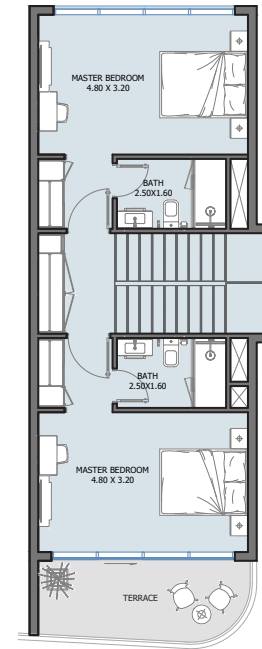
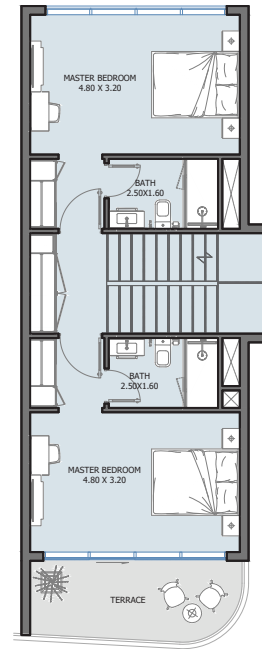
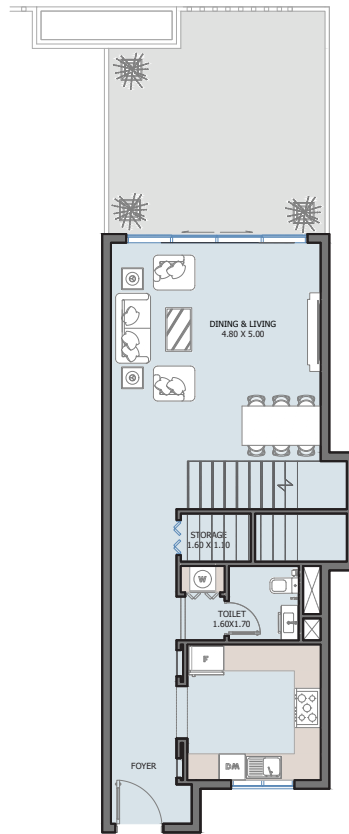


3B | Type A

B2 Floor

Internal Area	1563.13 to 1573.79 sq.ft
Outdoor Area	307.63 to 789.10 sq.ft
Total Area	1881.31 to 2361.81 sq.ft

BAIA

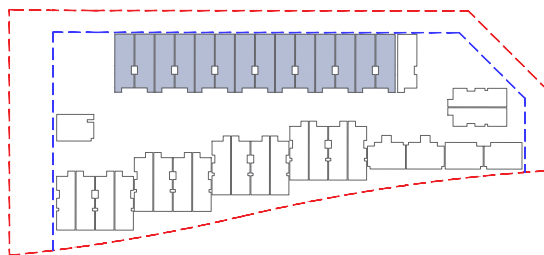
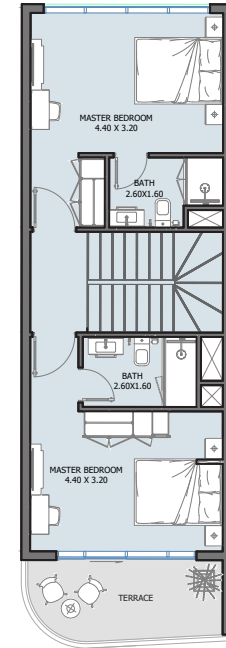
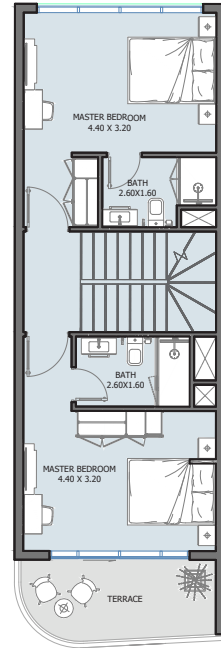
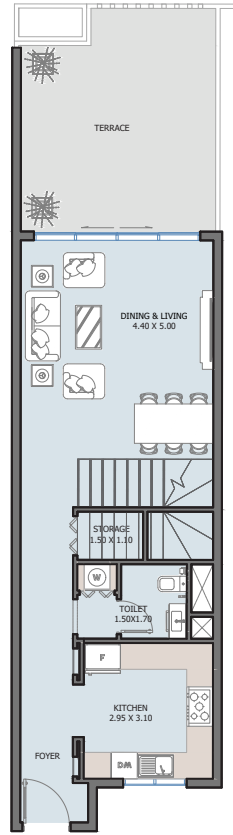


4B | Type B

Ground Floor

Internal Area	2106.71 sq.ft
Outdoor Area	473.93 sq.ft
Total Area	2580.65 sq.ft

BAIA

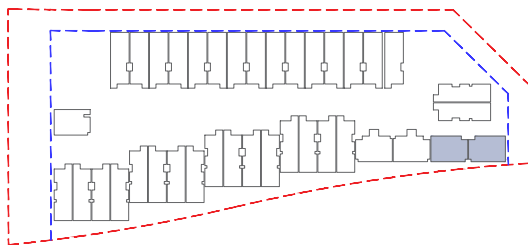
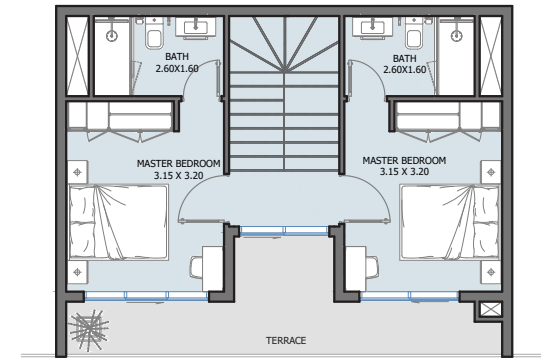
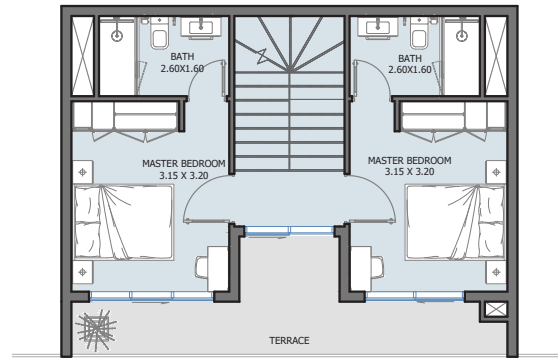
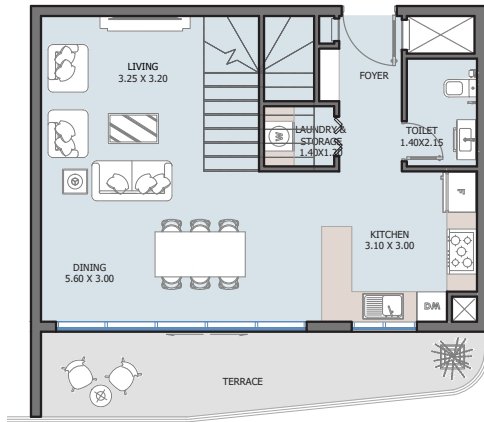


4B | Type A

Ground Floor

Internal Area	1859.68 to 1887.13 sq.ft
Outdoor Area	356.72 to 432.60 sq.ft
Total Area	2216.39 to 2319.73 sq.ft

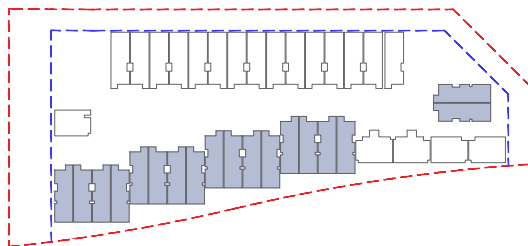
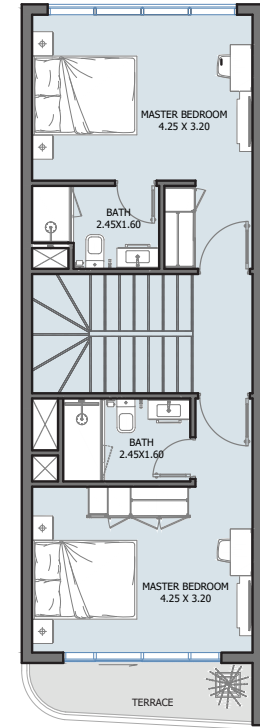
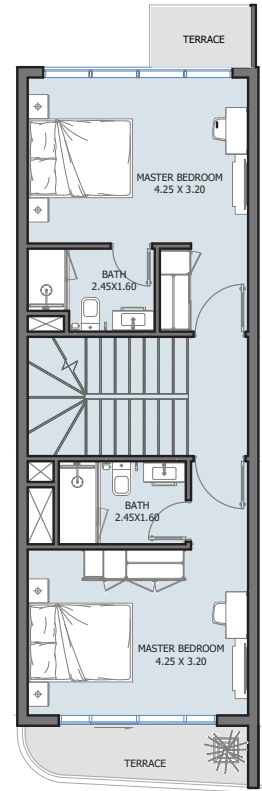
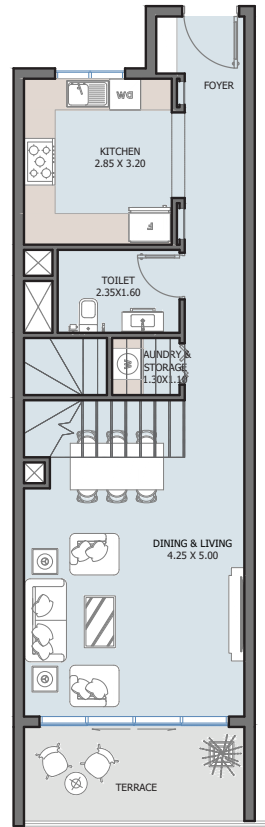
BAIA



4B | Type D

Ground Floor

Internal Area	1631.27 to 1647.31 sq.ft
Outdoor Area	435.18 to 666.29 sq.ft
Total Area	2066.45 to 2313.59 sq.ft

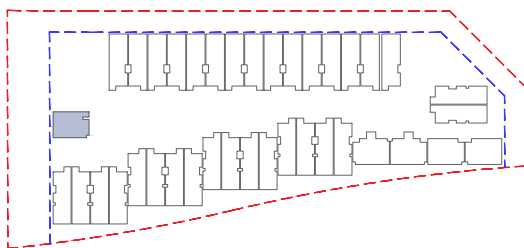
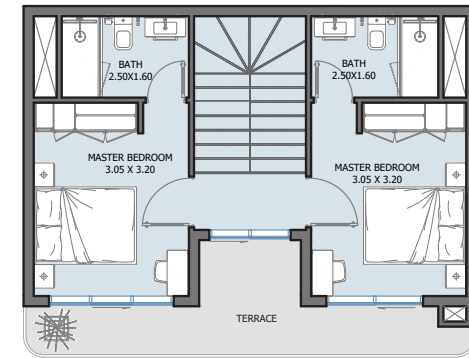
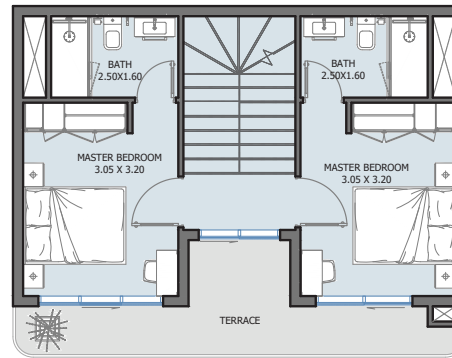
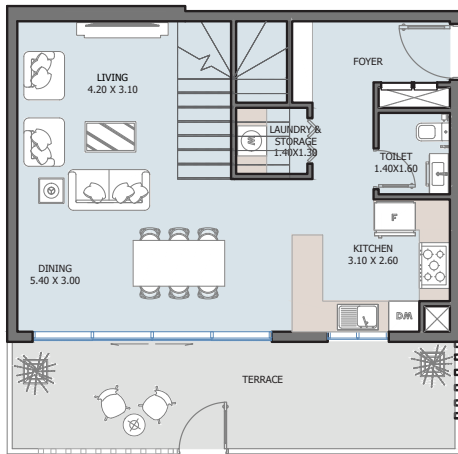


4B | Type C

Ground Floor

Internal Area	1802.85 to 1836.32 sq.ft
Outdoor Area	230.46 to 406.44 sq.ft
Total Area	2055.15 to 2242.77 sq.ft

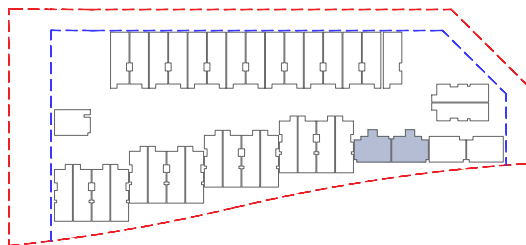
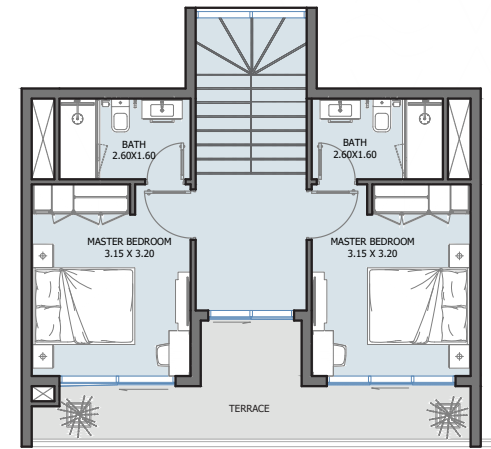
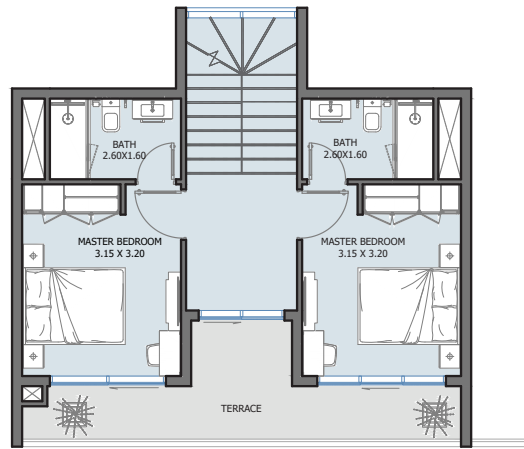
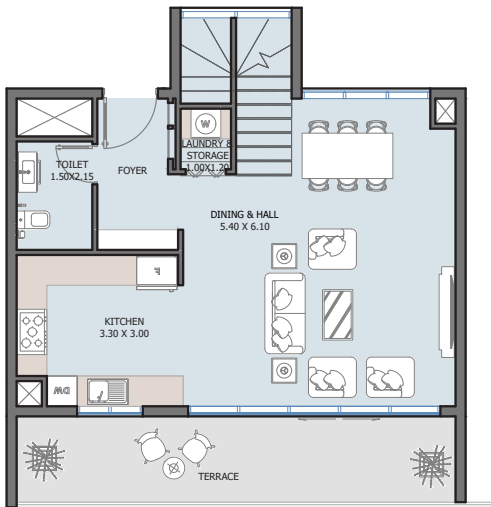
BAIA



4B | Type F

Ground Floor

Internal Area	1616.85 sq.ft
Outdoor Area	453.05 sq.ft
Total Area	2069.90 sq.ft



4B | Type E

Ground Floor

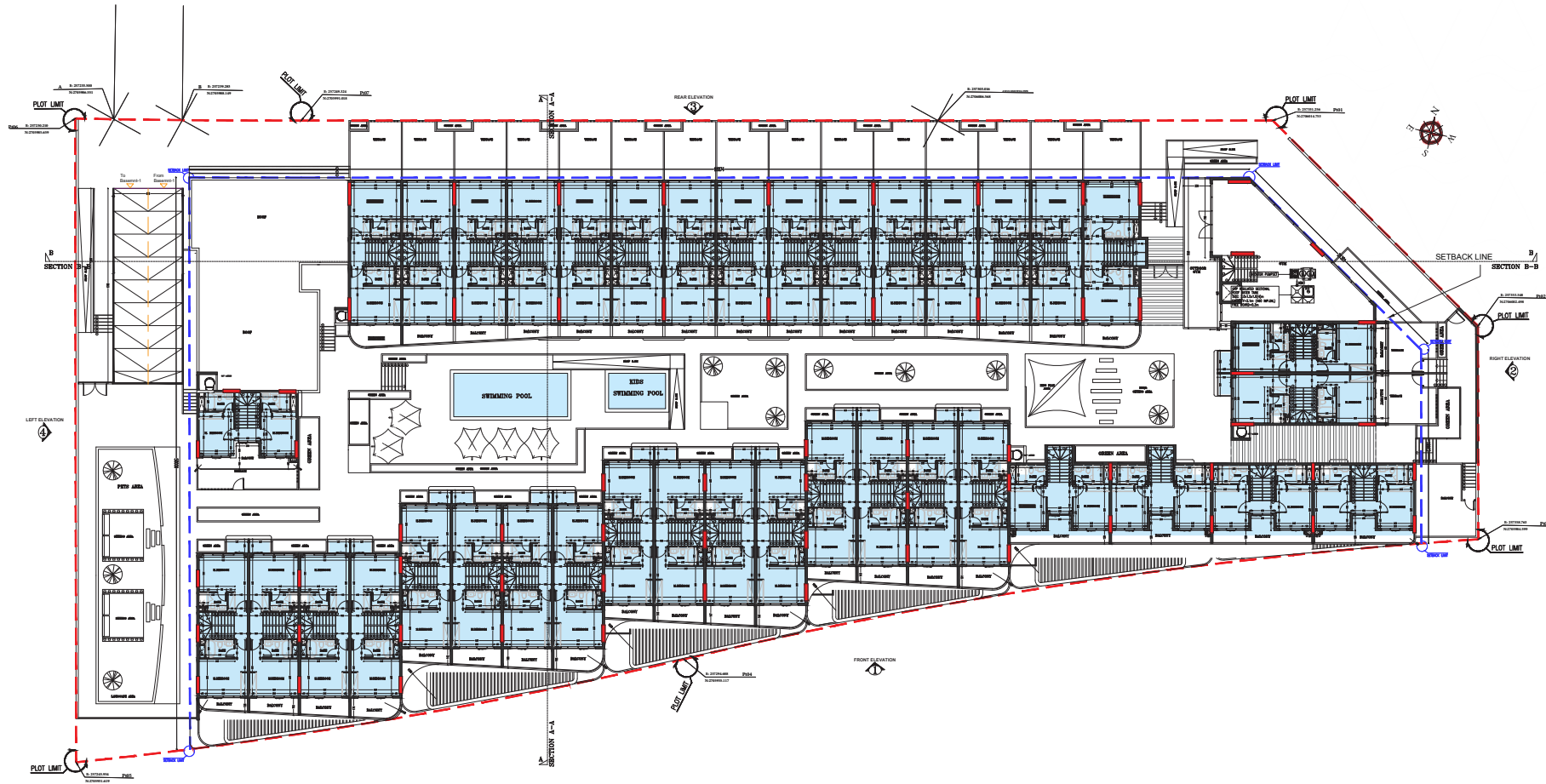
Internal Area	1761.62 to 1761.73 sq.ft
Outdoor Area	453.81 to 454.02 sq.ft
Total Area	2215.43 to 2215.75 sq.ft



Second Floor

Tower

4 Bedrooms



First Floor

Tower

4 Bedrooms



Reportage.

Abu Dhabi-UAE | Head Office

Tamouh Tower
28th Floor, Al Reem Island
P.O. Box: 111949
Tollfree: +971 800 77 55 2
info@reportageuae.com

Dubai-UAE

Anantara Business Tower
3rd Floor, Business Bay
P.O. Box: 27446
Tollfree: +971 800 77 55 2
info@reportageuae.com

Cairo-Egypt

Building 217
North Teseen St.
New Cairo
T: +20 12 0008 1190
info@reportageeg.com

Istanbul-Türkiye

Maslak Mh. Sümer Sk.
No:4, İç Kapı No:3, Bodrum Kat,
Maslak Office Building (MOB) Sarıyer
T: +90 530 774 9595
info@reportage.com.tr

Riyadh-KSA

Building No. 3230
Al Aflaj St., Al Suwaidi
P.O. Box 12791
T: +966 11 215 1110
info@reportageuae.com

Moscow-Russia

Yefremova Street 10s1, k4/4
bld sadovye kvartaly
P.O. Box 119048
info@reportagerussia.com

Kampala, Uganda

Plot 4, Philip Road
Near German Embassy
Kololo, Kampala, Uganda
+256 756 111 434 | +256 763 331 572
info@reportageug.com

Lahore - Pakistan

Plaza No. 185, Broadway
Commercial phase 8, DHA Lahore
+923309991111
Info@reportageempire.com

Kigali, Rwanda

KG 334 ST 10, Nyarutarama,
Kigali, Rwanda
+250738532168 | +250794100607
info@reportagerw.com

Nairobi, Kenya

46 Kabasiran, Lavington
P.O. box 38802-00623
Tel. +254 754 108108 / +254 208 108108

Lagos, Nigeria

No. 2 Obudu Close, Osborne Foreshore Estate,
Phase 1, Ikoyi, Lagos Nigeria
+234 810 859 9924
Info@reportage.ng

Baku, Azerbaijan

Azerbaijan, Baku City,
Uzeyir Hajibəyov 33 street
+994 10 236 40 46
Info@reportageaz.com

For more information, visit reportageuae.com
or call 800 77 55 2 | +971 50 244 1078



Legal Disclaimer:

The information contained in this brochure is confidential and is for the exclusive use of the recipient. This brochure may not be reproduced, distributed, delivered, or furnished to any person without the prior written approval of Reportage Properties. No representation or warranty (expressed or implied) is made or can be given with respect to the accuracy or completeness of the information herein, or that any future offer of units or apartments in the project will conform to the terms described herein. Nothing in this leaflet should be construed as financial, legal, tax or regulatory advice. All accessories such as electronics, furniture, white goods, decorative elements and so forth included in this brochure are not part of the standard unit and used for illustration purposes only. All plans, layouts, pictures, renderings, information and details included in this brochure are indicative only and may change at any time up to the final 'as built' status in accordance with final designs of the project and regulatory approvals and planning permissions.

SHARE THE MOMENT

R.