





JUMEIRAH

RESIDENCES

—
AL MARYAH ISLAND

Jumeirah Residences
Al Maryah Island

Let Life Glow

DEVELOPER



DEVELOPMENT MANAGER



Abu Dhabi, UAE



A city for living in the finest light

Abu Dhabi is a city where living well unfolds with quiet confidence. A place where a storied heritage finds new expressions through contemporary craft.



Embracing both individuality and community, it invites you to move fluidly between work and leisure, indulgence and wellness, celebration and reflection. With its globally acclaimed safety, stability and thoughtful urban vision, it offers a way of life where every moment glows with possibility.

Location



Effortless access to the capital's essence

Set on Al Maryah Island's shimmering edge, Jumeirah Residences Al Maryah Island is at the heart of what truly matters to you. While it offers easy access to Abu Dhabi's globally acclaimed cultural, lifestyle and leisure destinations, it holds a sense of privacy and calm, allowing you the luxury of connection without compromise. It is also located close to the Grand Steps, which seamlessly connects Al Maryah Island's exceptional retail and dining experiences to a stunning waterfront, creating a vibrant pedestrian-friendly destination.

ABU DHABI GLOBAL MARKET

4 minutes

REEM MALL

7 minutes

LOUVRE ABU DHABI

12 minutes

GUGGENHEIM MUSEUM

15 minutes

CLEVELAND CLINIC

4 minutes

SORBONNE UNIVERSITY

9 minutes

SAADIYAT CULTURAL DISTRICT

14 minutes

YAS ISLAND

25 minutes

THE GALLERIA

5 minutes

ABU DHABI DOWNTOWN

10 minutes

ZAYED NATIONAL MUSEUM

14 minutes

ZAYED INTL. AIRPORT

25 minutes



JUMEIRAH

RESIDENCES

AL MARYAH ISLAND

- GUGGENHEIM MUSEUM
- LOUVRE ABU DHABI
- ZAYED NATIONAL MUSEUM
- THE GALLERIA
- CLEVELAND CLINIC ABU DHABI
- ABU DHABI GLOBAL MARKET
- ABU DHABI MALL
- REEM MALL
- SORBONNE UNIVERSITY

Saadiyat Island

Yas Island

Reem Island

Abu Dhabi

ZAYED INTERNATIONAL AIRPORT





The philosophy





Let your home glow with life

A golden presence rising elegantly from the waterfront, Jumeirah Residences Al Maryah Island catches light and refines it into something quietly extraordinary. Here, it shapes how mornings begin and how evenings unwind with floor-to-ceiling windows welcoming the sunlight in soft, shifting tones. It wakes you with a sense of clarity and fills you with a calm energy. In each residence, thoughtfulness shines through each detail, intimate comfort elevates each experience, and quiet delight brings each moment alive.





Jumeirah promise

Enriching and elevating every detail for a life well led

Following Jumeirah's origins in Arabian Hospitality, we indulge residents with generous warmth and care. This shines through in our small touches and grand gestures, with thoughtful services that anticipate your needs. Nurturing lasting relationships with residents that extend far beyond the walls of their homes, we help cultivate a way of life that harmonises contemplation and connection, stimulation and retreat.



From personalised wellness experiences to private dining and concierge services, every service is tailored to match your rituals and to shape your journey towards wholesome wellbeing.



Architecture



The amber jewel of Al Maryah

Jumeirah Residences Al Maryah Island, sculpted with flowing curves and bold lines, is a distinctive expression of contemporary artistry and engineering. Floating terraces, sky-high gardens and a striking elevated pool redefine vertical living.

The amber-hued tower shifts character as the sun moves across the sky. And at night, it glimmers like the facets of a finely cut gem, embodying the capital's ever-evolving spirit.







Typology



Residences shaped by light

Jumeirah Residences Al Maryah Island offers a selection of light-filled one to four bedroom apartments and five bedroom penthouses, each with its own private terrace. The thoughtfully planned layouts prioritise openness, natural light and panoramic views, allowing the sky and sea to feel like an extension of the interior. Each residence is designed to feel effortlessly luxurious and brings Jumeirah's iconic hospitality to a highly private residential haven.



One BR Apartments

67 units

Two BR Apartments

106 units

Three BR Apartments

64 units

Four BR Apartments

14 units

Five BR Penthouses

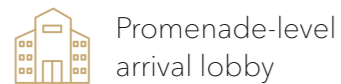
2 units

Amenities

Curated amenities crafted for your rituals

At Jumeirah Residences Al Maryah Island, we have curated amenities for a way of life centred around balance, wellbeing, and the joy of meaningful living. With exquisite spaces designed for your ever-evolving needs, we create the perfect setting for the delights of every day. Feel immersed in a vibrant waterfront lifestyle, with luxury retail, fine dining, and leisure experiences at your doorstep, while enjoying the discretion and calm of elevated living above. The seamless connectivity within Al Maryah Island offers ready access to destinations like the Grand Steps, an architectural marvel seamlessly linking refined lifestyle experiences to a breathtaking waterfront.

ARRIVAL AND LOBBY



Promenade-level arrival lobby



Grand residential arrival lobby



VIP arrival and drop-off area

WELLNESS AND RECREATION



State-of-the-art fitness centre



Outdoor & Indoor swimming pool



Male and female changing rooms



Male and female treatment suites

SOCIAL AND LIFESTYLE SPACES



Residents' lounge



Residents' library



Private event room



Screening / private cinema room

RETAIL AND DINING



Curated retail units



Outdoor dining and waterfront lounge



Signature retail / lifestyle boutique

FAMILY AND YOUTH SPACES



Landscaped sky deck with seating



Teen lounge



Children's play area

ZONED LEISURE AREAS



Event zone



Adults - only relaxation zone











Interior Design







A retreat shaped with careful consideration

The interiors are conceived as private sanctuaries shaped by Jumeirah's hospitality-led philosophy and reflect the brand's sophisticated, contemporary and enduring design ethos. The clean lines and refined proportions are complemented by premium materials that convey depth, warmth and craftsmanship.



With bespoke detailing and finishes evoking understated luxury, natural materials enhance comfort and tactility. The layouts prioritise space and flow while offering uninterrupted views of the sea, skyline and promenade.





Floor plans

Ground floor plan

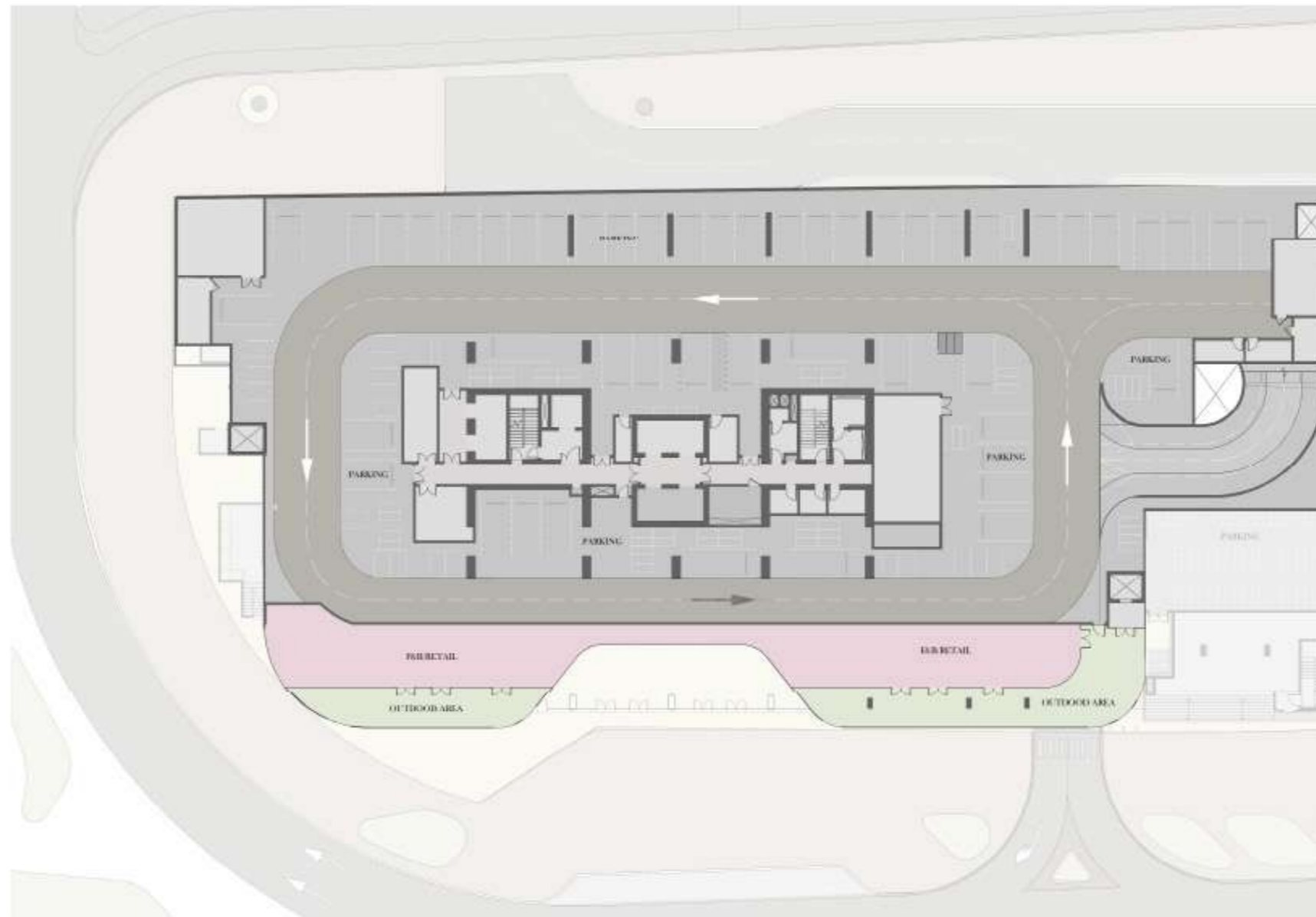


LEGEND

■ F&B/ RETAIL ■ AMENITIES

Floor layouts must only be referred for locating the unit type on a floor. Balcony profiles may differ slightly during subsequent design development stages.

Podium 1 floor plan



LEGEND

■ F&B/ RETAIL

Floor layouts must only be referred for locating the unit type on a floor. Balcony profiles may differ slightly during subsequent design development stages.

Podium 2 floor plan



LEGEND

■ AMENITIES

Floor layouts must only be referred for locating the unit type on a floor. Balcony profiles may differ slightly during subsequent design development stages.

1st floor plan



LEGEND ■ 1 BEDROOM ■ 2 BEDROOM ■ 3 BEDROOM

Floor layouts must only be referred for locating the unit type on a floor. Balcony profiles may differ slightly during subsequent design development stages.

2nd floor plan



LEGEND

■ 1 BEDROOM ■ 2 BEDROOM ■ 3 BEDROOM

Floor layouts must only be referred for locating the unit type on a floor. Balcony profiles may differ slightly during subsequent design development stages.

3rd - 8th typical floor plan



LEGEND

■ 1 BEDROOM ■ 2 BEDROOM ■ 3 BEDROOM

Floor layouts must only be referred for locating the unit type on a floor. Balcony profiles may differ slightly during subsequent design development stages.

9th - 20th typical floor plan

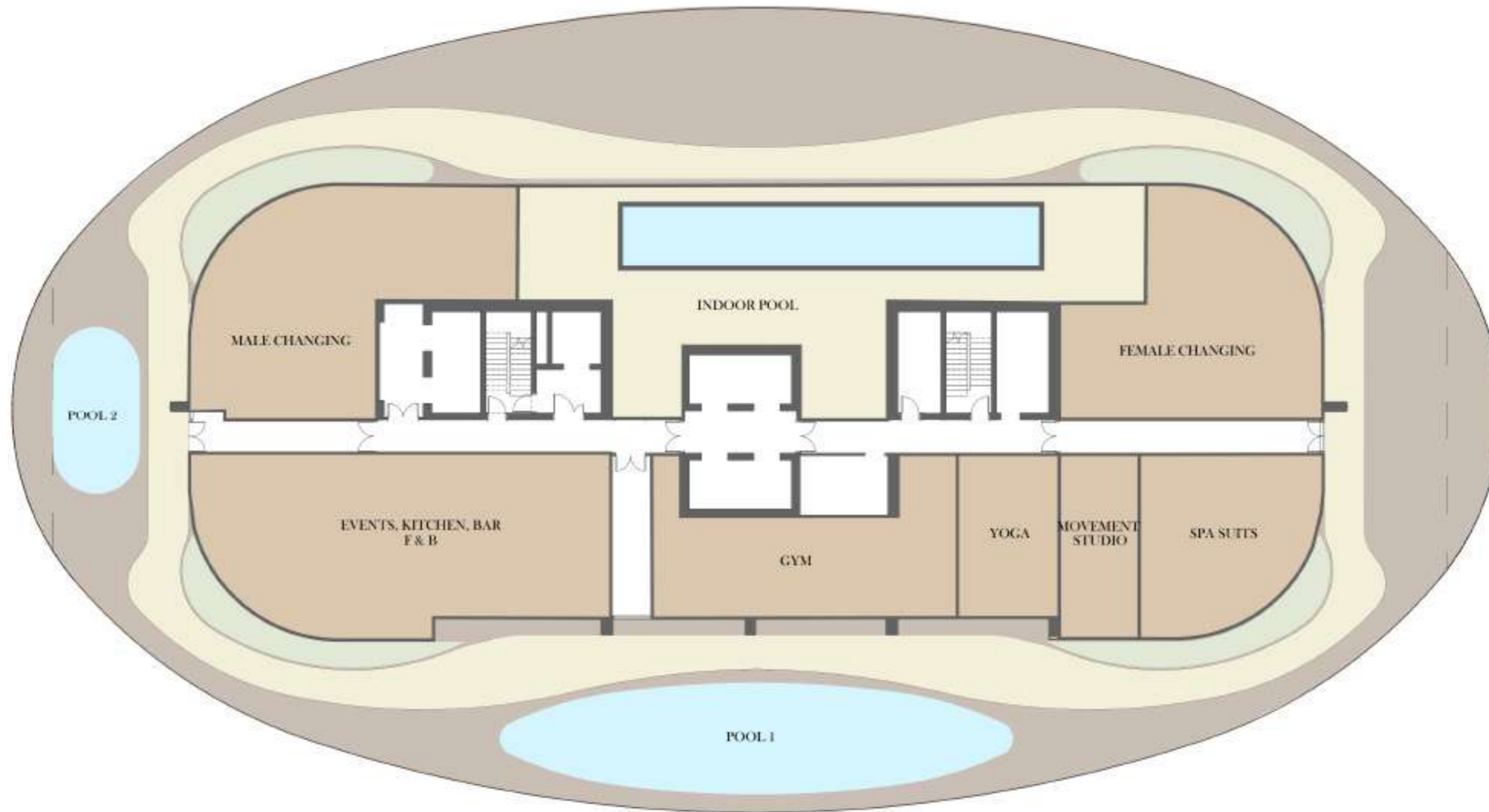


LEGEND

■ 1 BEDROOM ■ 2 BEDROOM ■ 3 BEDROOM

Floor layouts must only be referred for locating the unit type on a floor. Balcony profiles may differ slightly during subsequent design development stages.

22nd floor plan



LEGEND

■ AMENITIES

Floor layouts must only be referred for locating the unit type on a floor. Balcony profiles may differ slightly during subsequent design development stages.

23rd - 31st typical floor plan



LEGEND

- 1 BEDROOM
- 2 BEDROOM
- 3 BEDROOM
- 4 BEDROOM

Floor layouts must only be referred for locating the unit type on a floor. Balcony profiles may differ slightly during subsequent design development stages.

32nd floor plan



LEGEND

- 1 BEDROOM
- 2 BEDROOM
- 3 BEDROOM
- 4 BEDROOM

Floor layouts must only be referred for locating the unit type on a floor. Balcony profiles may differ slightly during subsequent design development stages.

33rd floor plan



LEGEND

- 1 BEDROOM
- 2 BEDROOM
- 3 BEDROOM
- 4 BEDROOM

Floor layouts must only be referred for locating the unit type on a floor. Balcony profiles may differ slightly during subsequent design development stages.

34th - 35th typical floor plan

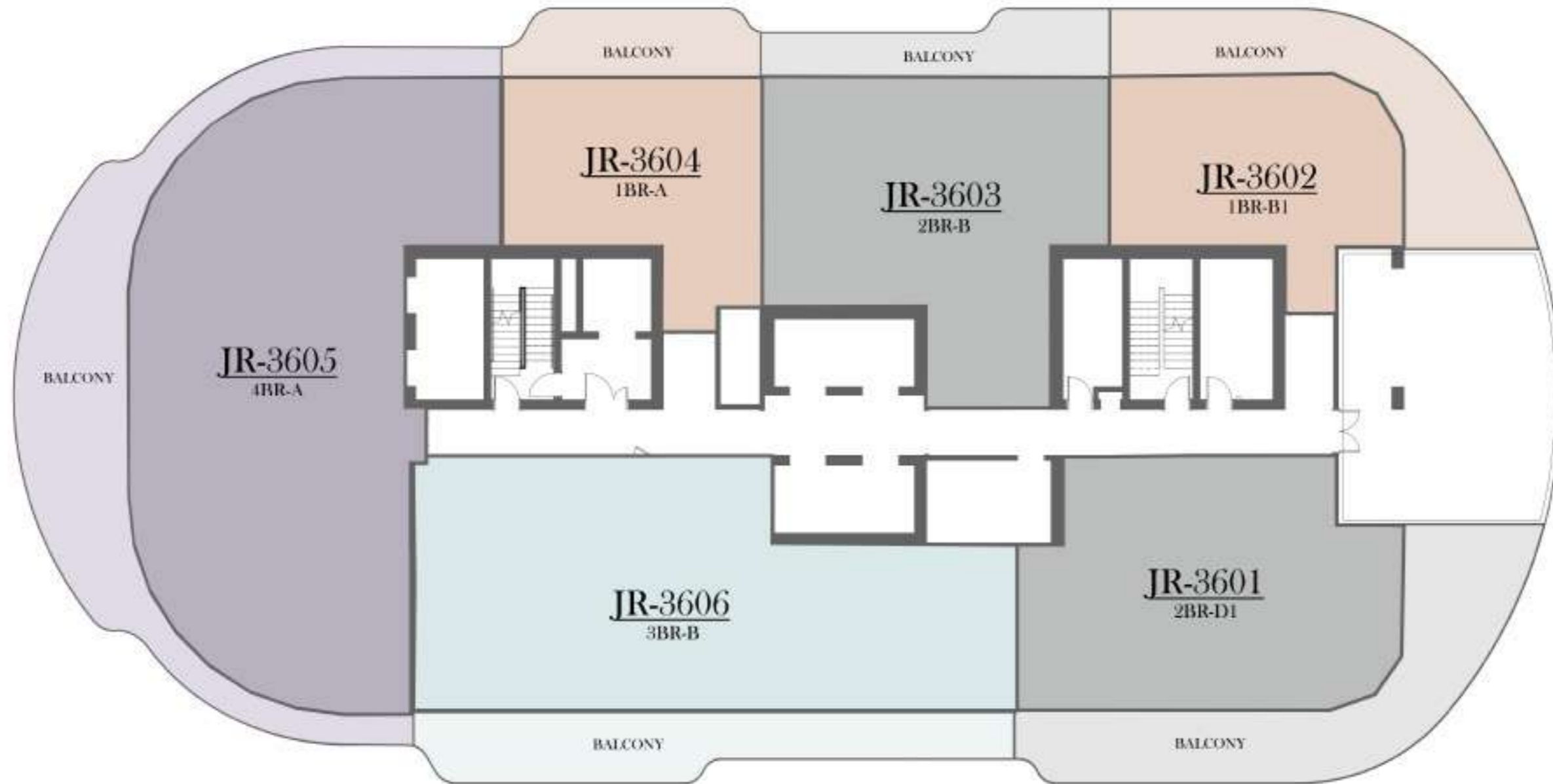


LEGEND

- 1 BEDROOM
- 2 BEDROOM
- 3 BEDROOM
- 4 BEDROOM

Floor layouts must only be referred for locating the unit type on a floor. Balcony profiles may differ slightly during subsequent design development stages.

36th floor plan

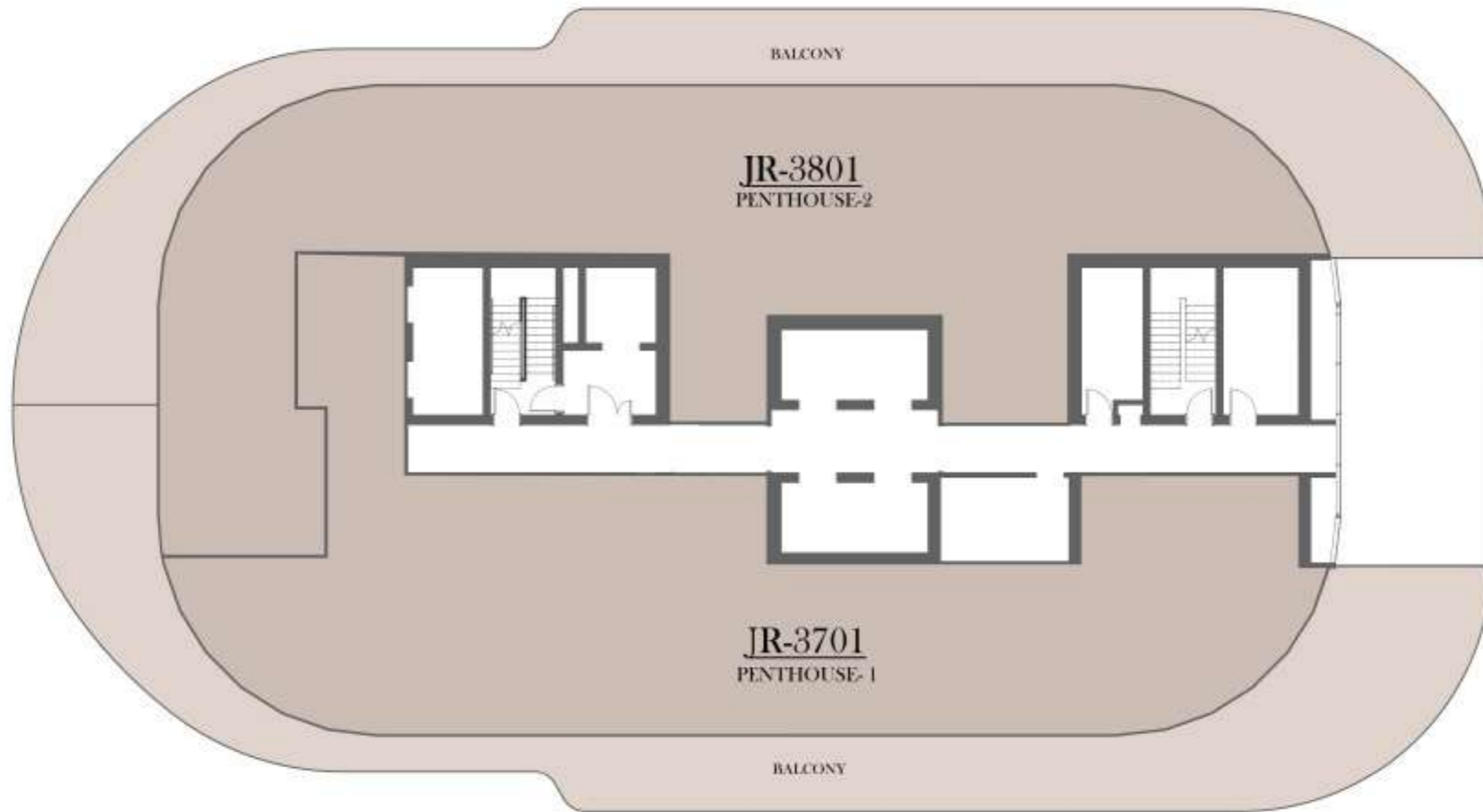


LEGEND

- 1 BEDROOM
- 2 BEDROOM
- 3 BEDROOM
- 4 BEDROOM

Floor layouts must only be referred for locating the unit type on a floor. Balcony profiles may differ slightly during subsequent design development stages.

37th floor plan

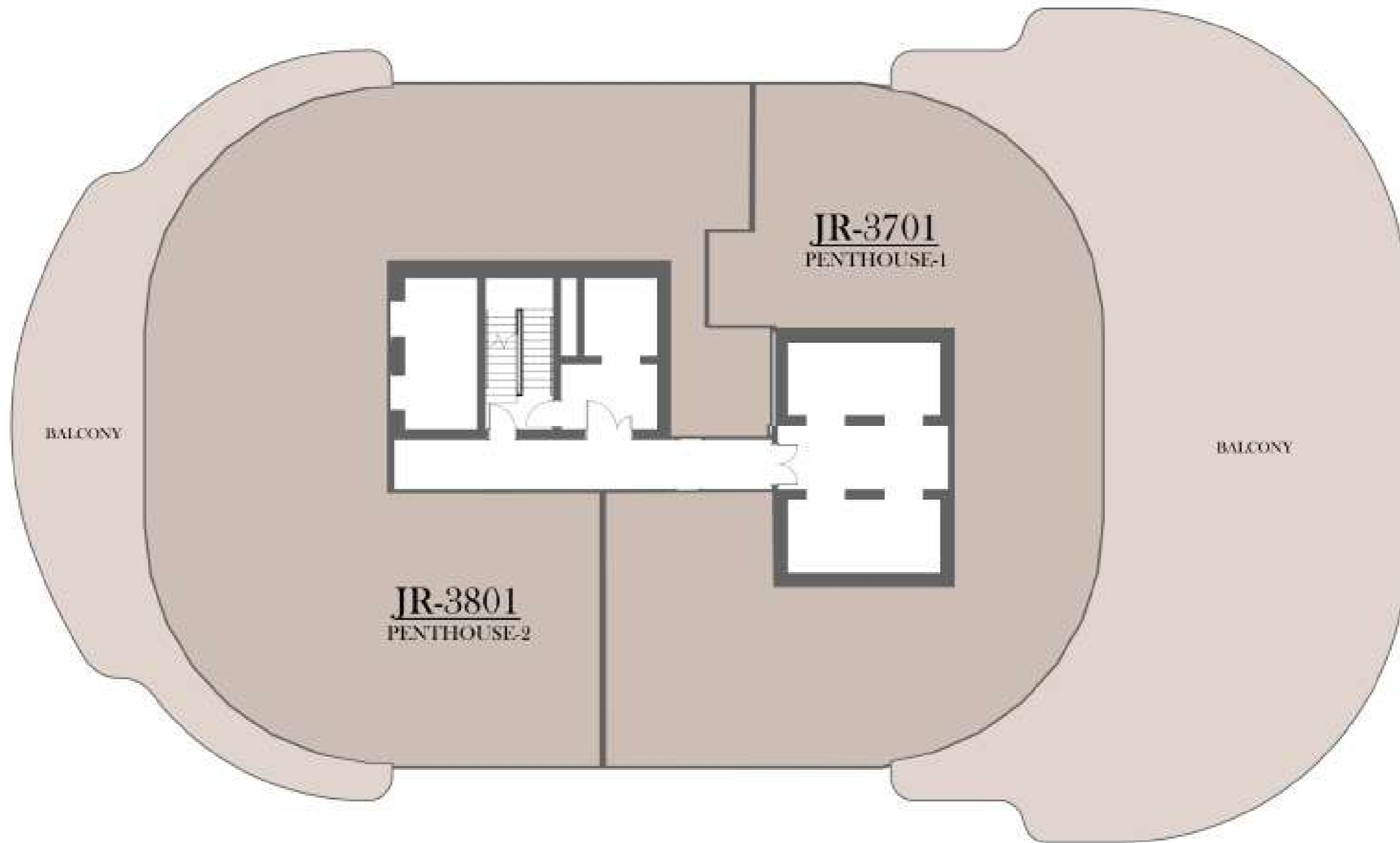


LEGEND

■ DUPLEX

Floor layouts must only be referred for locating the unit type on a floor. Balcony profiles may differ slightly during subsequent design development stages.

38th floor plan



LEGEND

■ DUPLEX

Floor layouts must only be referred for locating the unit type on a floor. Balcony profiles may differ slightly during subsequent design development stages.

Unit Layouts

One Bedroom

TYPE 1 BR-A

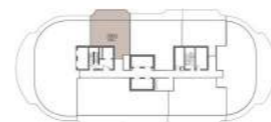


No. of BR	1
Total Area	1114 Sq ft *

(*Starting from



LEVEL 23 - 31



LEVEL 32



LEVEL 33



LEVEL 34 - 35



LEVEL 36

Disclaimer: Dimensions, apartment areas & layouts are indicative and may differ slightly during subsequent design development stages. Furniture shown is for illustration purpose only.

One Bedroom

TYPE 1 BR-B



No. of BR	1
Total Area	1062 Sq ft *

(*)Starting from



Disclaimer: Dimensions, apartment areas & layouts are indicative and may differ slightly during subsequent design development stages. Furniture shown is for illustration purpose only.

One Bedroom

TYPE 1 BR-B1



No. of BR	1
Total Area	1594 Sq ft *

(*)Starting from



LEVEL 36

Disclaimer: Dimensions, apartment areas & layouts are indicative and may differ slightly during subsequent design development stages. Furniture shown is for illustration purpose only.

One Bedroom

TYPE 1 BR-C



No. of BR	1
Total Area	1205 Sq ft *

(*Starting from



LEVEL 2 - 8



LEVEL 9 - 20

Disclaimer: Dimensions, apartment areas & layouts are indicative and may differ slightly during subsequent design development stages. Furniture shown is for illustration purpose only.

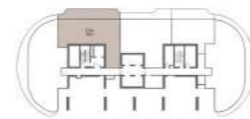
Two Bedroom

TYPE 2 BR-A



No. of BR	2
Total Area	1928 Sq ft *

(*)Starting from



LEVEL 1



LEVEL 2 - 8



LEVEL 9 - 20

Disclaimer: Dimensions, apartment areas & layouts are indicative and may differ slightly during subsequent design development stages. Furniture shown is for illustration purpose only.

Two Bedroom

TYPE 2 BR-B



No. of BR	2
Total Area	1893 Sq ft *

(*)Starting from



Disclaimer: Dimensions, apartment areas & layouts are indicative and may differ slightly during subsequent design development stages. Furniture shown is for illustration purpose only.

Two Bedroom

TYPE 2 BR-C



No. of BR	2
Total Area	1809 Sq ft *

(*)Starting from



LEVEL 2 - 8



LEVEL 9 - 20

Disclaimer: Dimensions, apartment areas & layouts are indicative and may differ slightly during subsequent design development stages. Furniture shown is for illustration purpose only.

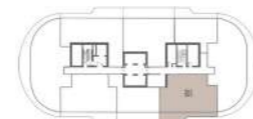
Two Bedroom

TYPE 2 BR-D



No. of BR	2
Total Area	1880 Sq ft *

(*)Starting from



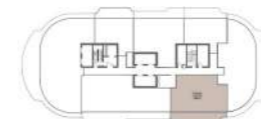
LEVEL 2 - 8



LEVEL 9 - 20



LEVEL 23 - 31



LEVEL 32



LEVEL 33



LEVEL 34 - 35

Disclaimer: Dimensions, apartment areas & layouts are indicative and may differ slightly during subsequent design development stages. Furniture shown is for illustration purpose only.

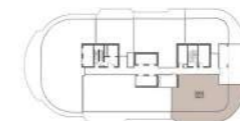
Two Bedroom

TYPE 2 BR-D1



No. of BR	2
Total Area	2396 Sq ft *

(*)Starting from

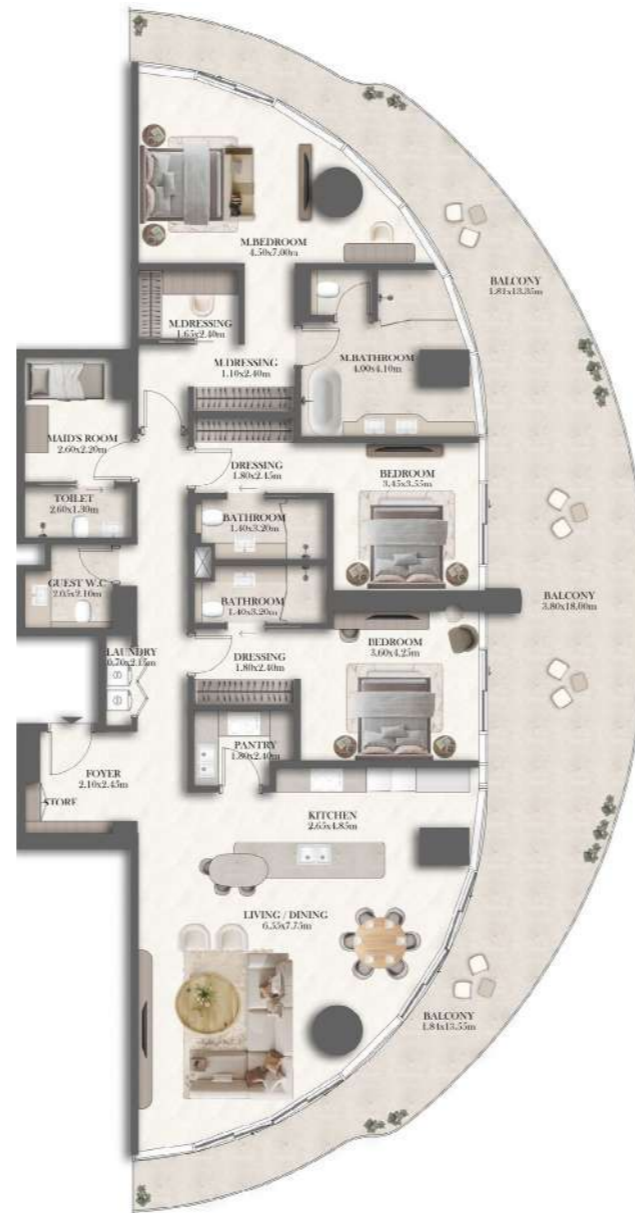


LEVEL 36

Disclaimer: Dimensions, apartment areas & layouts are indicative and may differ slightly during subsequent design development stages. Furniture shown is for illustration purpose only.

Three Bedroom

TYPE 3 BR-A

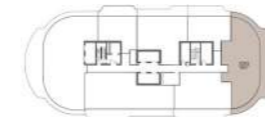


No. of BR	3
Total Area	3088 Sq ft *

(*Starting from



LEVEL 2 - 8

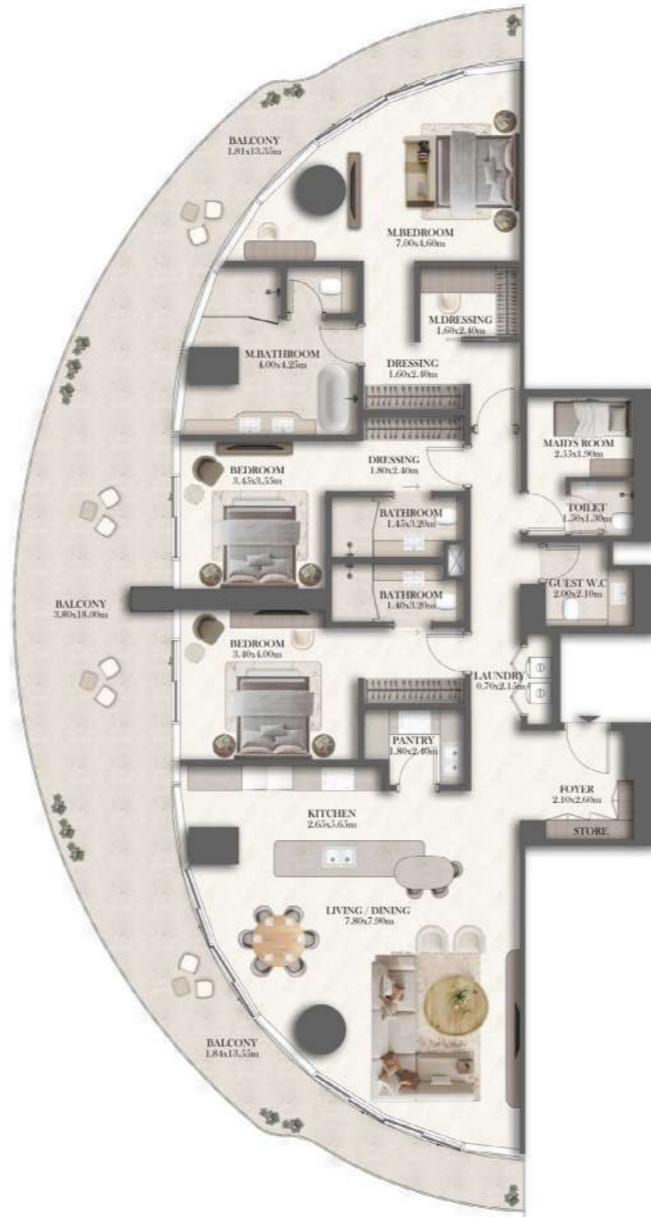


LEVEL 32

Disclaimer: Dimensions, apartment areas & layouts are indicative and may differ slightly during subsequent design development stages. Furniture shown is for illustration purpose only.

Three Bedroom

TYPE 3 BR-AM



No. of BR	3
Total Area	3035 Sq ft *

(*)Starting from

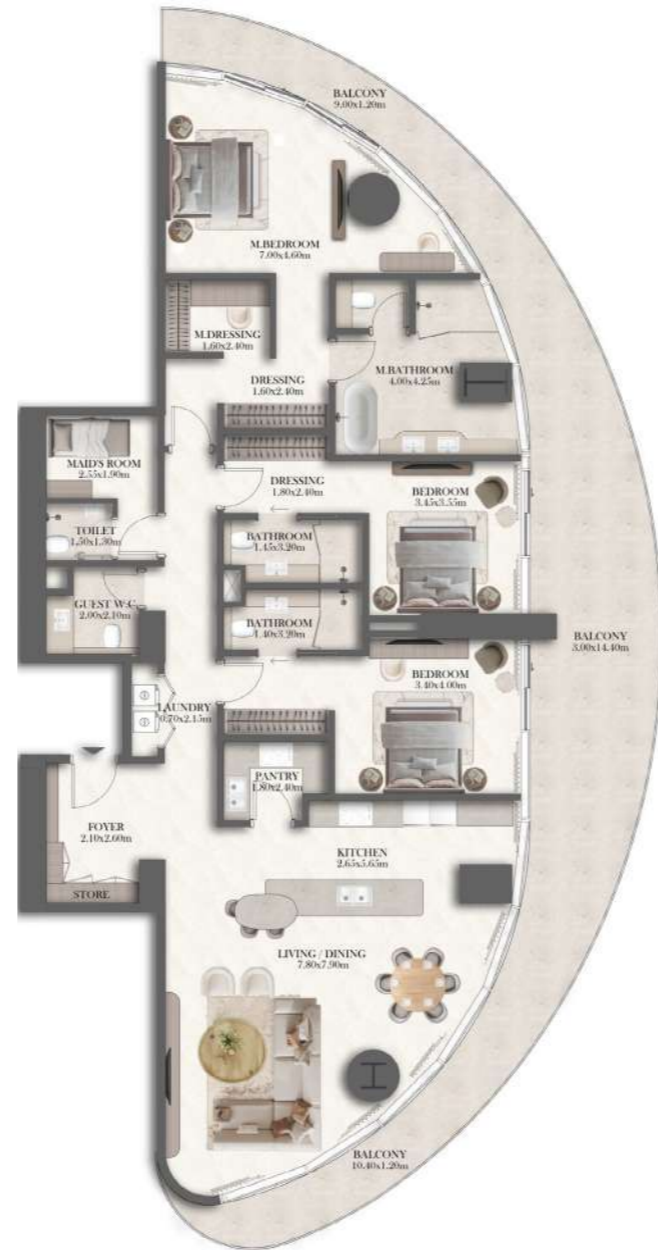


LEVEL 2 - 8

Disclaimer: Dimensions, apartment areas & layouts are indicative and may differ slightly during subsequent design development stages. Furniture shown is for illustration purpose only.

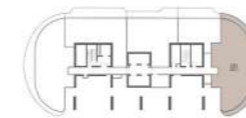
Three Bedroom

TYPE 3 BR-A1



No. of BR	3
Total Area	3008 Sq ft *

(*Starting from

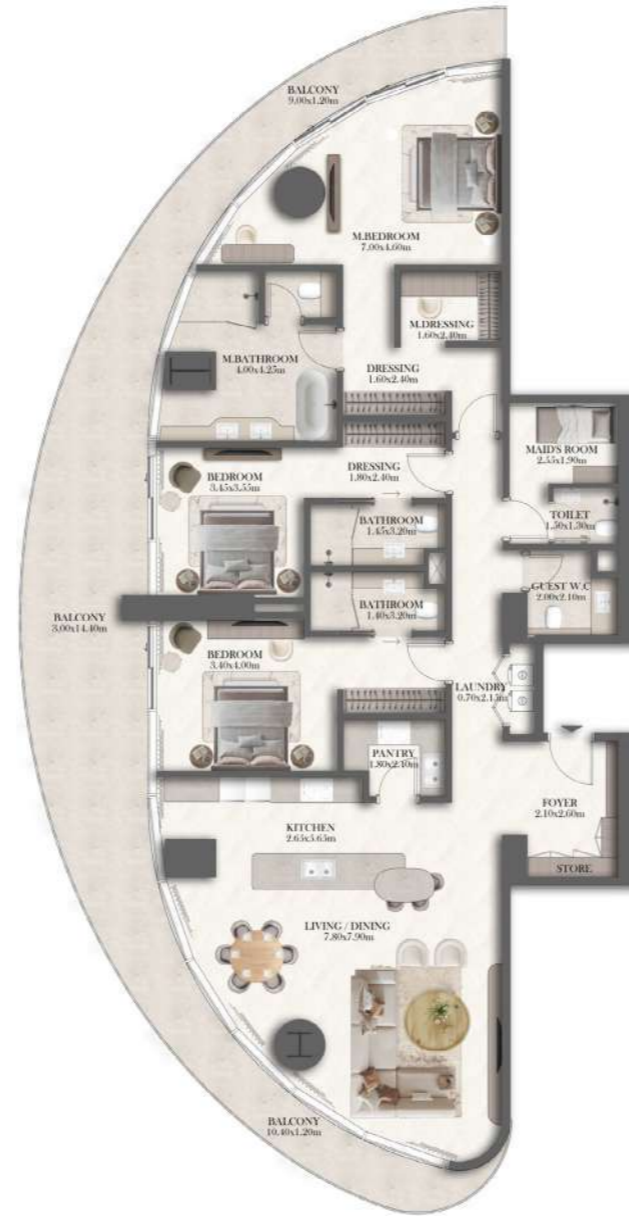


LEVEL 1

Disclaimer: Dimensions, apartment areas & layouts are indicative and may differ slightly during subsequent design development stages. Furniture shown is for illustration purpose only.

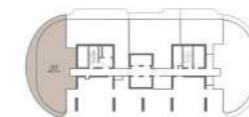
Three Bedroom

TYPE 3 BR-A1M



No. of BR	3
Total Area	2974 Sq ft *

(*)Starting from



LEVEL 1

Disclaimer: Dimensions, apartment areas & layouts are indicative and may differ slightly during subsequent design development stages. Furniture shown is for illustration purpose only.

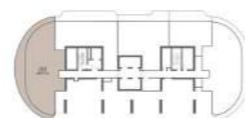
Three Bedroom

TYPE 3 BR-B



No. of BR	3
Total Area	2896 Sq ft *

(*)Starting from



LEVEL 23 - 31



LEVEL 32



LEVEL 33



LEVEL 34 - 35



LEVEL 36

Disclaimer: Dimensions, apartment areas & layouts are indicative and may differ slightly during subsequent design development stages. Furniture shown is for illustration purpose only.

Three Bedroom

TYPE 3 BR-C

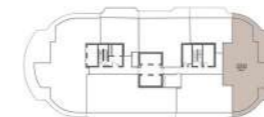


No. of BR	3
Total Area	3401 Sq ft *

(*)Starting from



LEVEL 9 - 20



LEVEL 23 - 31

Disclaimer: Dimensions, apartment areas & layouts are indicative and may differ slightly during subsequent design development stages. Furniture shown is for illustration purpose only.

Three Bedroom

TYPE 3 BR-CM



No. of BR	3
Total Area	3378 Sq ft *

(*)Starting from



LEVEL 9 - 20

Disclaimer: Dimensions, apartment areas & layouts are indicative and may differ slightly during subsequent design development stages. Furniture shown is for illustration purpose only.

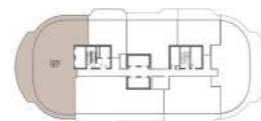
Four Bedroom

TYPE 4 BR-A

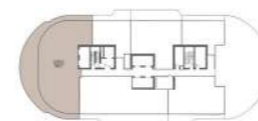


No. of BR	4
Total Area	4246 Sq ft *

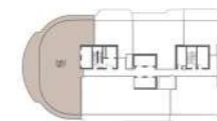
(*Starting from



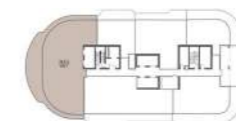
LEVEL 32



LEVEL 33



LEVEL 34 - 35



LEVEL 36

Disclaimer: Dimensions, apartment areas & layouts are indicative and may differ slightly during subsequent design development stages. Furniture shown is for illustration purpose only.

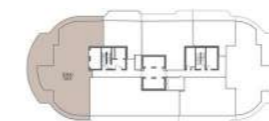
Four Bedroom

TYPE 4 BR-B



No. of BR	4
Total Area	4484 Sq ft *

(*Starting from



LEVEL 23 - 31

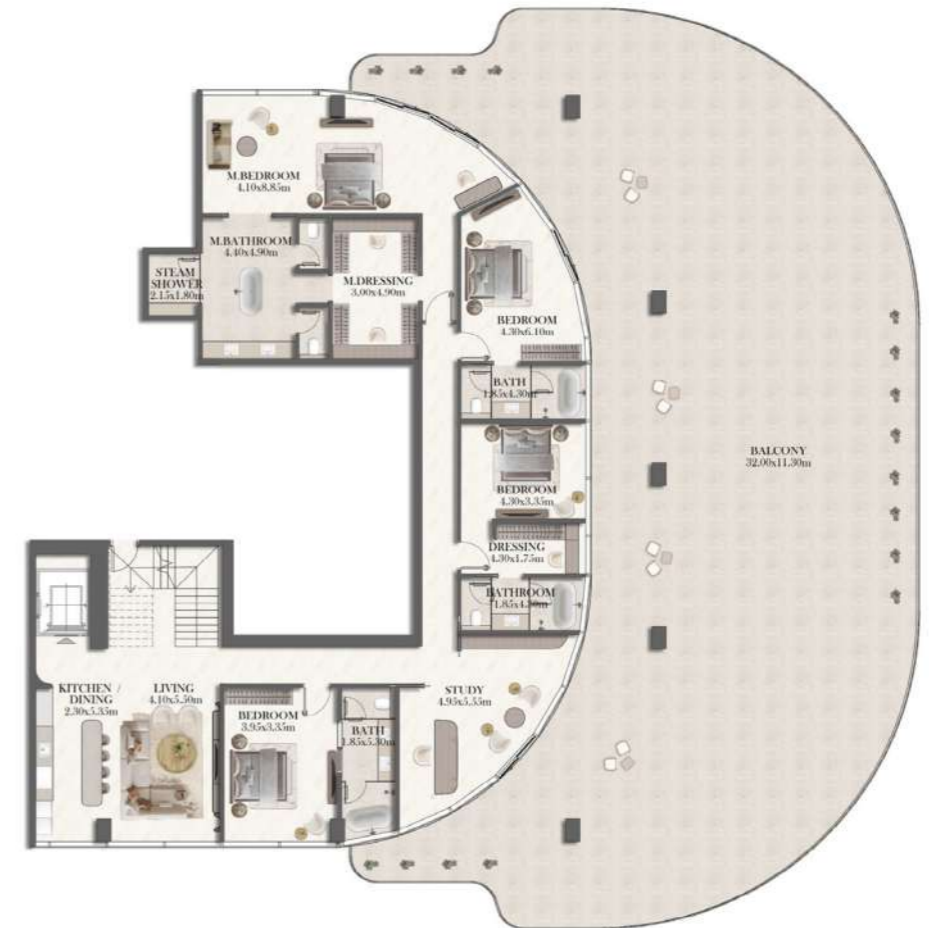
Disclaimer: Dimensions, apartment areas & layouts are indicative and may differ slightly during subsequent design development stages. Furniture shown is for illustration purpose only.

Penthouse

TYPE PH-1



LOWER FLOOR



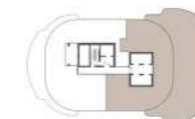
UPPER FLOOR

No. of BR	6
Total Area	14040 Sq ft *

(*)Starting from



LEVEL 37



LEVEL 38

Disclaimer: Dimensions, apartment areas & layouts are indicative and may differ slightly during subsequent design development stages. Furniture shown is for illustration purpose only.

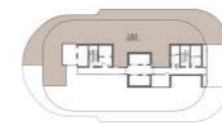
Penthouse

TYPE PH-2

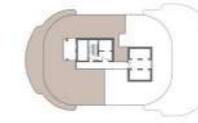


No. of BR	6
Total Area	12526 Sq ft *

(*Starting from



LEVEL 37



LEVEL 38

Disclaimer: Dimensions, apartment areas & layouts are indicative and may differ slightly during subsequent design development stages. Furniture shown is for illustration purpose only.

About us

DEVELOPER



Emirates Developments is a distinguished real estate developer headquarters in Abu Dhabi and recognized for its specialization in world-class branded residences. The company is committed to redefining modern living by delivering premium residential and commercial developments that seamlessly integrate luxury, sustainability, and functional design. Emirates Developments focuses on crafting communities that inspire, endure, and add long-term value. Every project is driven by meticulous attention to detail, global partnerships, and an unwavering dedication to quality ensuring exceptional living environments and enriching experiences for residents, stakeholders, and the wider community.

DEVELOPMENT MANAGER



Established in 2010, Royal Development Company is a trusted development management firm known for shaping transformative real estate projects from inception to completion. With a 15-year legacy by 2025, RDC has managed over 60 large-scale developments across hospitality, residential, and mixed-use sectors in more than 15 countries throughout the Middle East, Africa, the Americas, Europe, and Asia. A subsidiary of premium real estate developer Royal Development Holding, which operates under the umbrella of Emirates Stallions Group (ESG), part of the IHC Group.

jumeirah.emiratesdevelopments.com



Toll free number

800219

