



Palladium Developments is proud to present its inaugural project Grandala, just off Sheikh Zayed Road at the heart of Dubai in Jumeirah Garden City. Grandala is not just a residential project; it is a statement of sustainable living. The residences exude luxury and come complete with top-notch amenities, proximity to shopping and dining, and complimentary facilities such as a gym and pool. Beyond the physical comforts, Grandala goes above and beyond by offering services like rental management and in-room dining, ensuring a seamless and exclusive lifestyle for its residents.



INVEST IN A LIFESTYLE, NOT JUST A HOME:

This project is more than just a residential complex; it's a testament to the art of living. From the moment you step into our meticulously crafted apartments, you'll be captivated by the seamless blend of luxury, innovation, and convenience. The perfect fusion of smart technology and opulent living awaits you at our prestigious address in Jumeirah Garden City.





Home meets Hotel

A home with an extra layer of services, security, and luxury. Experience a new level of convenience, community, accessibility with all the amenities of a hotel being directly connected to your home.

Location

Our project is strategically situated in Jumeirah Garden City, enjoying convenient access to prominent destinations such as Sheikh Zayed Road, Dubai Downtown, Jumeirah Beach, City Walk, and Bur Dubai. Furthermore, it is within walking distance of the Financial Centre Metro Station. Positioned in the heart of Dubai, our project provides proximity to the city's renowned landmarks, all reachable within a 10-minute radius.



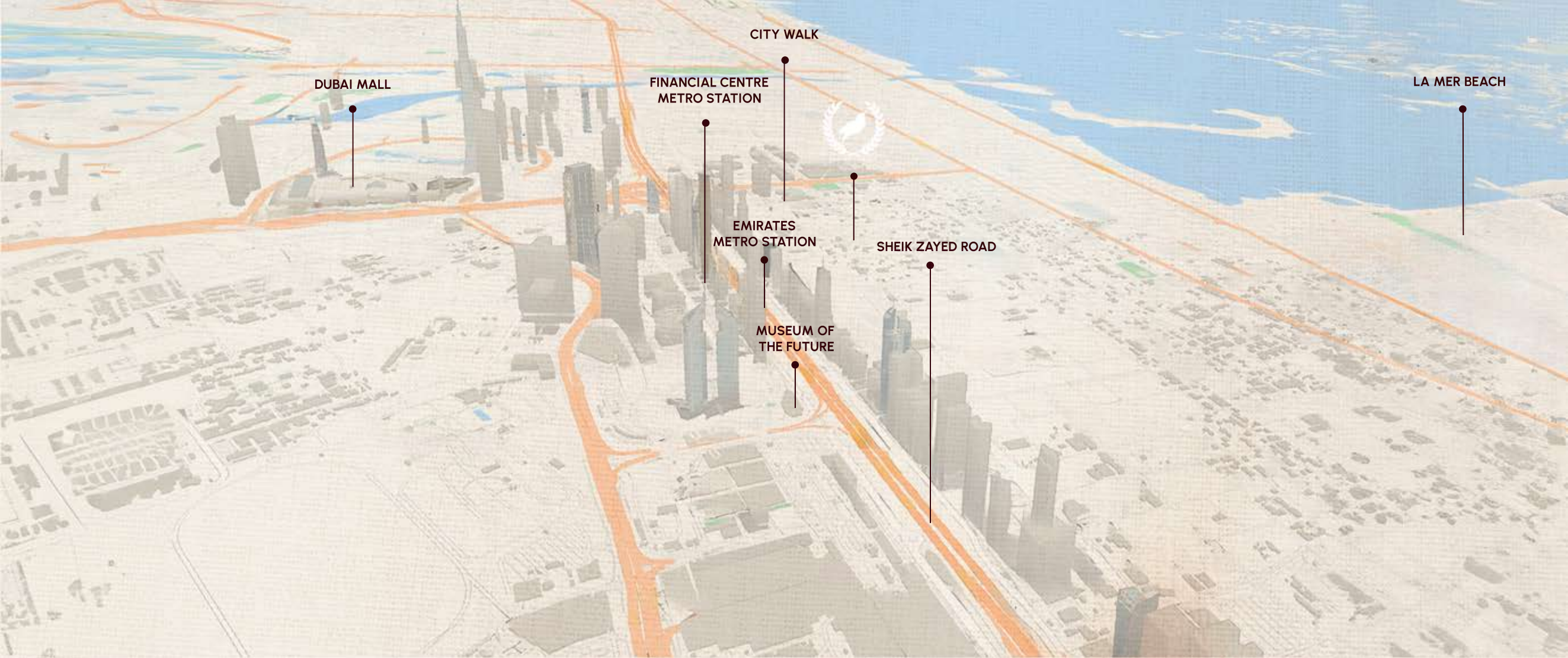


About Jumeirah Garden City:

Jumeirah Garden City is a medium-density mixed-use neighborhood, showcasing a blend of residential apartments, retail spaces, public facilities, hotels, and parks. Owned by Meraas, it is a freehold suburb parallel to the iconic Sheikh Zayed Road (E11). Envisioned to exemplify the highest standards of sustainability, This development aims to set a revolutionary example for the entirety of Dubai.

Overview Map





Dubai Mall & Burj Khalifa

1 metro station away from Burj Khalifa.



Museum of the Future

1 metro station away from Financial Centre Station.



Dubai International Financial Centre (DIFC)

within walking distance.



Dubai World Trade Centre

4 minutes' drive from the location.



Business Bay

5 minutes' drive from the location.



Jumeirah Beach

5 minutes' drive from the location.



City Walk

5 minutes' drive from the location.



Dubai Canal

5 minutes' drive from the location.



Rashid Hospital & Medcare Hospital

Less than 10 minutes' drive from the location.



Dubai International Airport

15 minutes' drive from location.



Accessibility: Less than 500m to Emirates tower metro station and DIFC metro station

Prime Location

Situated in the prestigious Jumeirah Garden City, our development enjoys proximity to the vibrant heart of the city, with the iconic Burj Khalifa gracing the skyline, creating a picturesque backdrop for your everyday life.



Key Features

This project introduces a novel Home-hotel concept, offering apartment ownership coupled with full hotel services.



Furnished



Room Service



House Keeping



Gym



Recreational
Lounge



Swimming pool



Laundry



Storage Facility



Smart Home
Integration



Open air
Cinema



Rental
Management



Burj Khalifa
Views

Location is in proximity of Dubai's most well known landmarks:

Satwa Park: Across the road

Emirates Towers and DIFC Metro stations: 5 min walk

Museum of the future: 5 min walk

DIFC: 5 min walk

Dubai Mall & Burj Khalifa - 1 metro station away

Dubai World Trade Centre - 5 min drive

Business Bay - 5 min drive

Jumeirah Beach - 5 min drive

City Walk - 5 min drive

Dubai Canal - 5 min drive

Safa park: 5 min drive

Rashid Hospital & Medcare Hospital - 10 min drive

Dubai International Airport - 15 min drive



Class Architecture

Indulge in architectural excellence with our prestigious residences, crafted by the same visionary architect behind the iconic JW Marquis Hotel. Elevate your living experience with a testament to unparalleled design, sophistication, and luxury, bringing the renowned expertise of world-class hospitality to your home.



JW MARQUIS



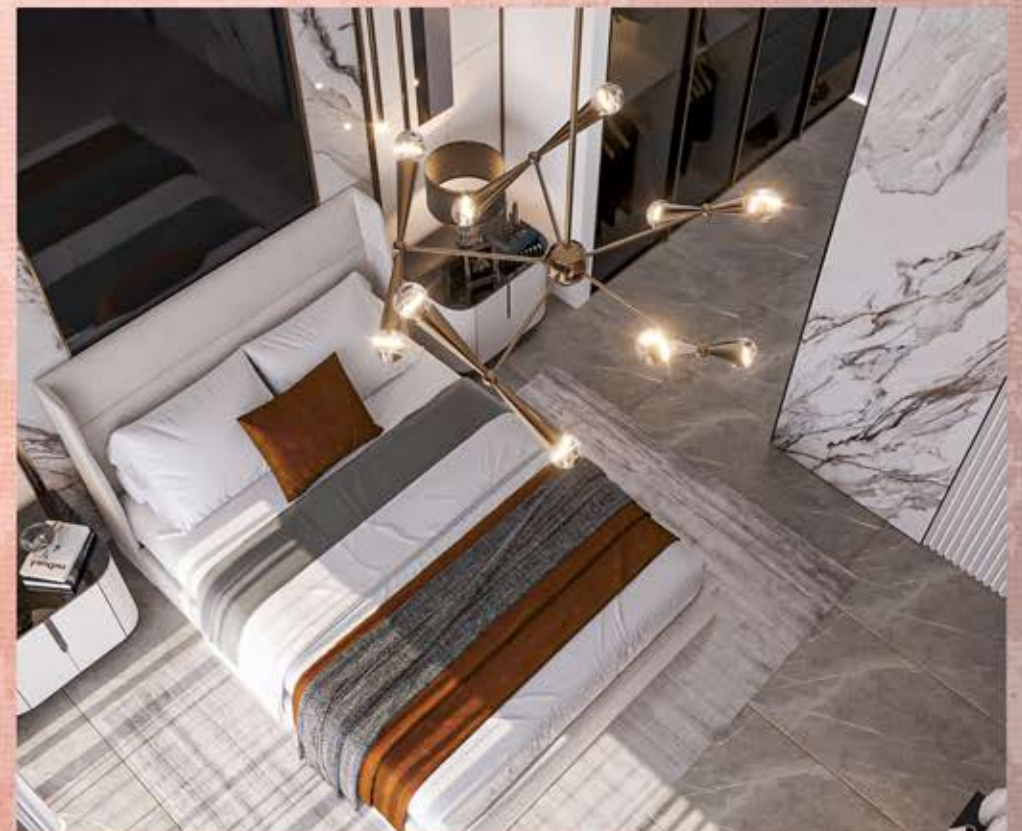
Luxurious Furnishings

Immerse yourself in opulence with our fully furnished apartments, curated to exude sophistication and comfort.

Every detail has been carefully selected to enhance your living space and provide a touch of luxury to your daily routine.

Distinctive Apartments

An apartment is more than just a structure; it embodies a sense of belonging. It encompasses the unique guidelines embraced by you and your loved ones. Our apartments redefine living spaces, offering a flexible environment that respects individuality rather than imposing rigid rules. These spaces become an all-round haven, seamlessly blending the hospitality and convenience of a hotel with the comfort and autonomy of your own residence, all enriched by a harmonious experience.





Exclusive features

Choose our distinctive apartments where luxury meets innovation. Delight in the exclusive allure of sophisticated floorings, including marble and stone that elevate your living experience with advanced HVAC systems for a fresh atmosphere, and cleverly designed modular furniture for maximized living space. Unlike other developers, we offer unparalleled Homotel services, branded smart appliances, and secure smart locks, setting your lifestyle apart with unique comforts and technologies





Modular Space Saving Furniture: Experience the epitome of modern living with our innovative modular space-saving furniture. Our apartments are equipped with cutting-edge designs that seamlessly blend style and functionality, ensuring that every square foot is optimized for your convenience. Every piece is designed with functionality and style in mind, allowing you to effortlessly transform your living space to suit your needs. From multifunctional storage solutions to adaptable seating arrangements, our modular furniture is the key to unlocking the full potential of your home.

Studio Magic: Our studios are designed for maximum versatility. Featuring a Murphy bed that effortlessly disappears into a cupboard when not in use, revealing a spacious sitting area for up to four people. Say goodbye to compromise and hello to a living space that adapts to your every need.

THE KITCHEN



Key Features

Seamless Transformation: With our retractable walls, your kitchen effortlessly transforms into a chic entertainment area, creating an expansive layout that seamlessly blends functionality and style. This adaptability allows you to curate the perfect space for hosting gatherings, fostering unforgettable moments with friends and family.

Odor-Free Living: Bid farewell to the challenges of lingering cooking smells. Our innovative design ensures that cooking odors are confined to the kitchen when needed, preventing them from permeating the rest of your living space. Enjoy the freedom to experiment with bold flavors without worrying about any unwanted aromas lingering in your home.

Flexible Entertaining: Whether you're hosting an intimate dinner party or a lively social gathering, the flexibility of our retractable walls allows you to tailor your living space to the occasion. Say goodbye to the limitations of traditional layouts and embrace the freedom to create a dynamic environment that suits your lifestyle.



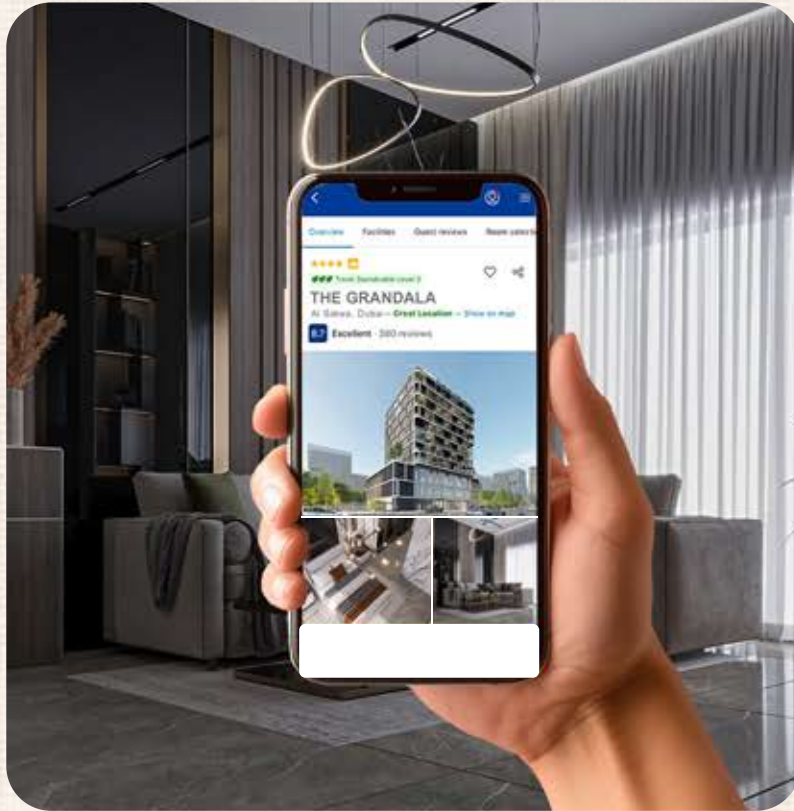
A Symphony of Connectivity

Our commitment to providing a smart living environment extends beyond individual amenities. We have carefully crafted a seamlessly connected ecosystem, allowing you to control and monitor various aspects of your home from the palm of your hand.



Leisure and Luxury

Experience a lifestyle of leisure and luxury within our exclusive community. Stay fit in our state-of-the-art health club, unwind in the clubhouse featuring a pool table, and bask in the sun by the rooftop swimming pool. Elevate your evenings with complimentary open-air cinema screenings against the breathtaking backdrop of the Sheikh Zayed road city skyline. Welcome to a residence where every amenity is designed to enhance your living experience.



Extra services offered

A dedicated contact number and an application shall be provided to our customers, and end users where they will be able to use the following services for a reasonable fee:

RENTAL MANAGEMENT

Marketing of vacant units, Screening of potential tenants for units available, Check-in and Check-out procedures, rental and deposit collection, liaising with unit owners and potential customers, inspection of unit upon customers request.



ROOM SERVICE

where customers can order meals, snacks, beverages to be delivered directly to their units.



HOUSEKEEPING

regular cleaning, housekeeping, and maintenance services provided, as per customers' needs.



LAUNDRY

offering Laundry and dry-cleaning options for all our residents.

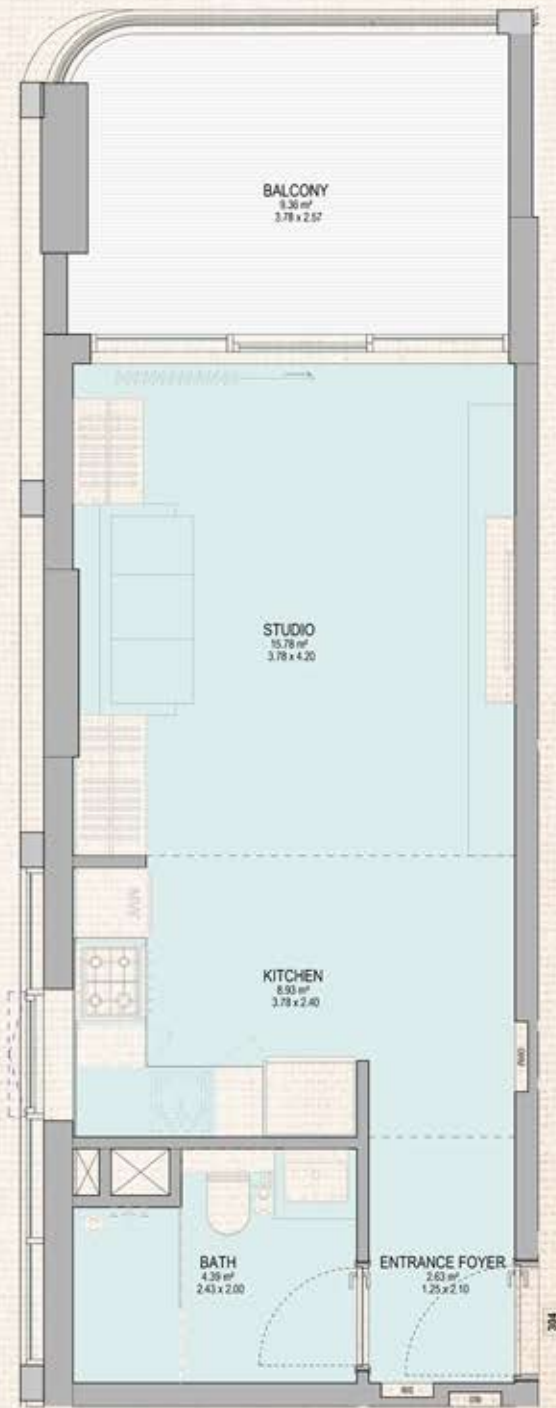


A place for all occasions

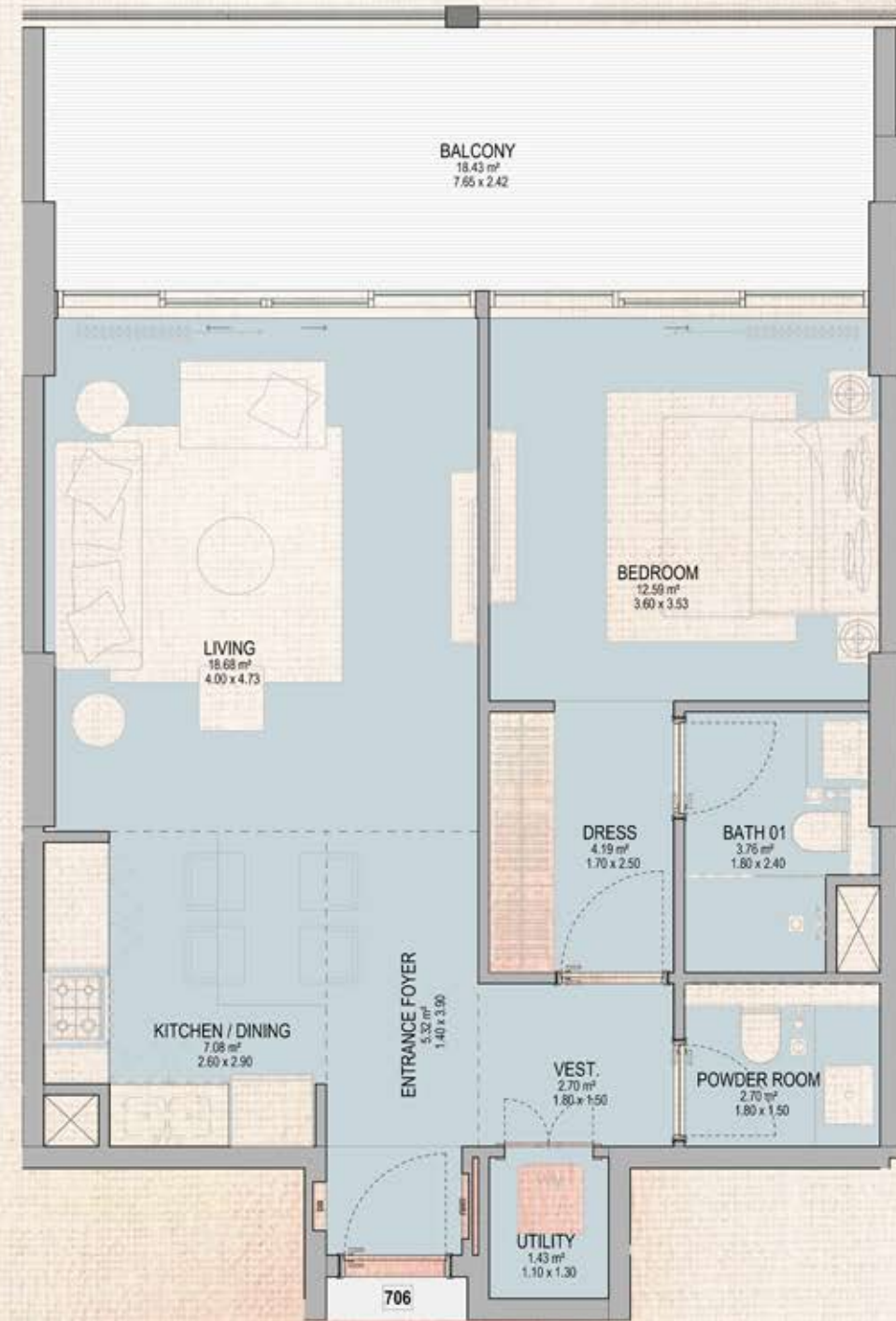
Discover the ultimate convenience at our building – a perfect blend of work and leisure, only 500m from Emirates Metro Station, a leisurely 5 min drive to the vibrant shores of La Mer beach or the iconic Dubai Mall. Your all-in-one destination for every occasion.



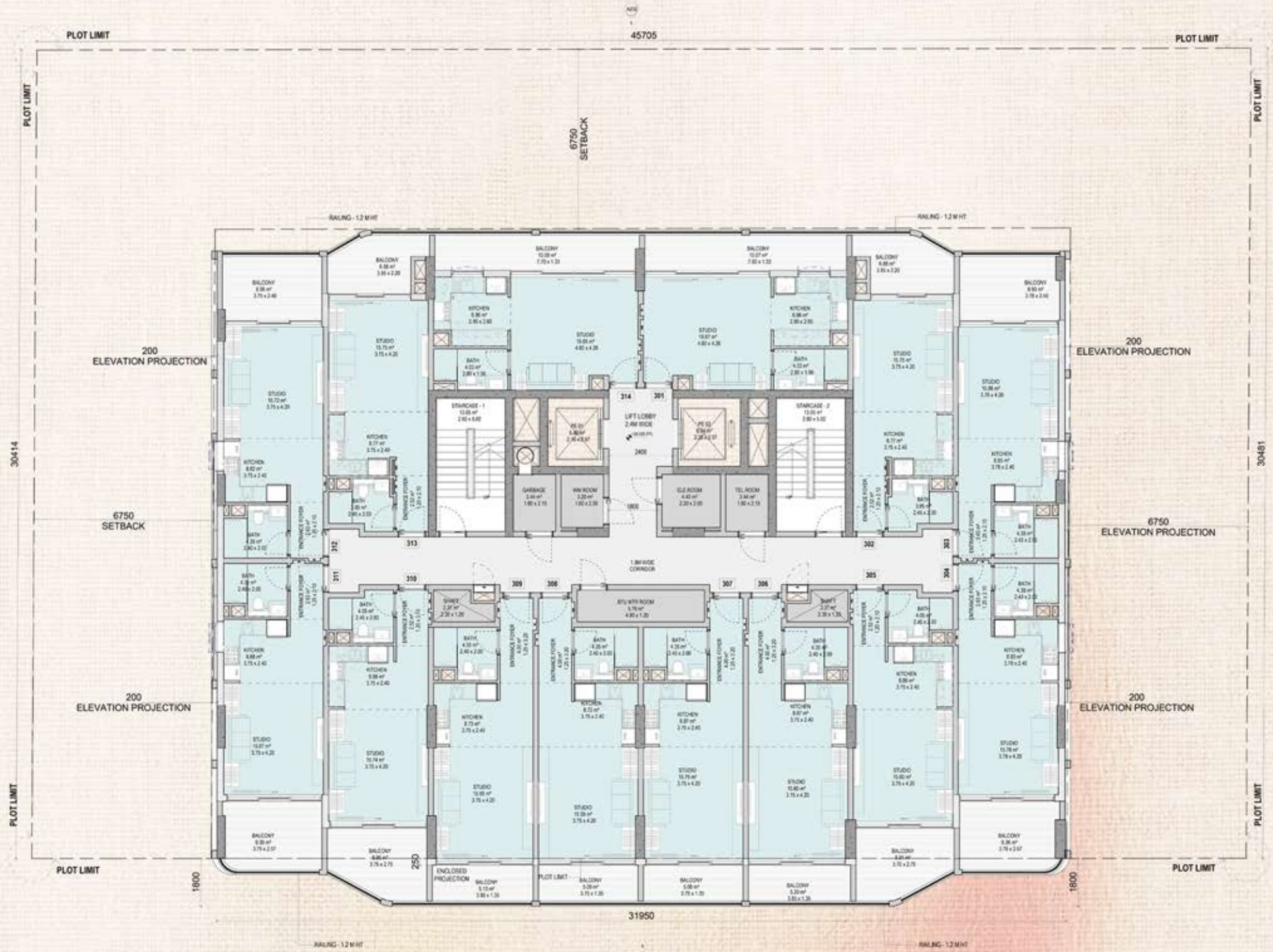
Make Grandala your new home & discover the epitome of contemporary living – contact us today to explore the seamless integration of smart features and witness firsthand how our development redefines the concept of a modern, connected home. Your smart oasis in Dubai is just a call away!



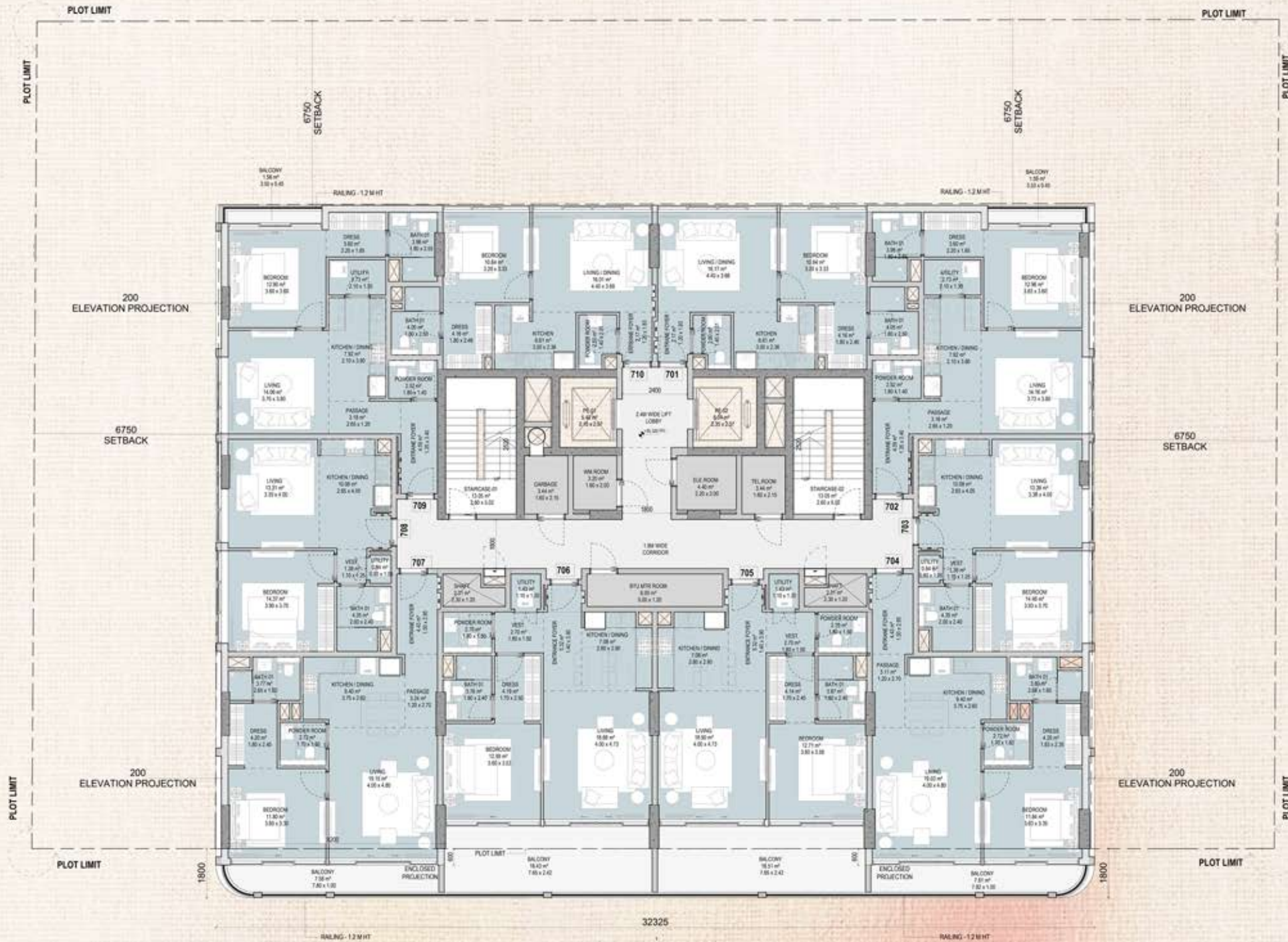
Typical studio apartment



Typical one bedroom apartment



Typical studio floor



Typical one bedroom floor

INQUIRE@PALLADIUM.AE

+971 52 301 1888

PALLADIUM.AE



Head office

Media City, Arjaan Office Tower, office 1301

Sales office

Business Bay, Opus, office 1002c