

# FLOOR PLANS

## 1-BEDROOM

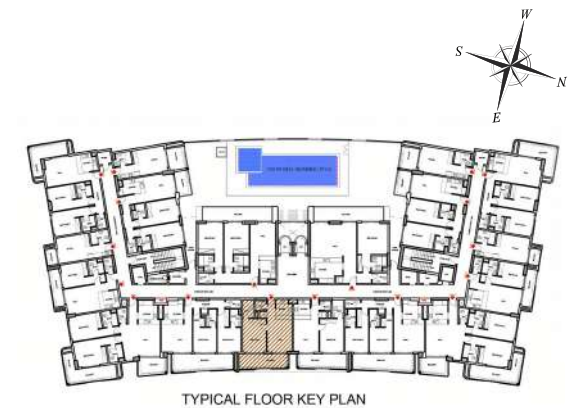


## Unit - 01

**TOTAL AREA**  
66.13 M<sup>2</sup>      711.82 F<sup>2</sup>

**SUITE AREA**  
49.76 M<sup>2</sup>      535.61 F<sup>2</sup>

**BALCONY**  
16.37 M<sup>2</sup>      176.21 F<sup>2</sup>



Disclaimer: 1. All room dimensions are measured to structural elements and exclude wall finishes and construction tolerances. 2. All dimensions have been provided by our consultant architects. 3. All materials, dimensions and drawings are approximate. Information is subject to change without notice. 4. Actual suite area may vary from the stated area. Drawings not to scale. The developer reserves the right to make revisions. 5. Calculation of suite area is measured as the area bounded by the centre line of demising or partition walls separating one unit from another unit, the exterior face of all exterior walls, and the exterior face of the corridor wall enclosing the adjoining unit. 6. Calculation of balcony area is measured as the area bounded by the centre line of demising or partition walls separating one unit from another unit, the outmost face of the enclosing guard and the external face of the adjoining balcony. 7. The units are measured at typical floor in the building. Columns may vary in size depending on the floor level. 8. For each unit type, unit sizes and details might be slightly different. Please refer to the sales and purchase agreement for the actual size of each specific unit.

## FLOOR PLANS

# 2 - BEDROOM



## Unit - 02

### TOTAL AREA

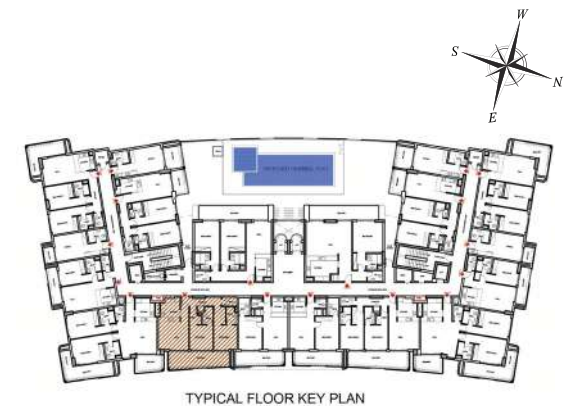
100.59 M<sup>2</sup>      1082.74 F<sup>2</sup>

### SUITE AREA

78.38 M<sup>2</sup>      843.68 F<sup>2</sup>

### BALCONY

22.21 M<sup>2</sup>      239.07 F<sup>2</sup>



Disclaimer: 1. All room dimensions are measured to structural elements and exclude wall finishes and construction tolerances. 2. All dimensions have been provided by our consultant architects. 3. All materials, dimensions and drawings are approximate. Information is subject to change without notice. 4. Actual suite area may vary from the stated area. Drawings not to scale. The developer reserves the right to make revisions. 5. Calculation of suite area is measured as the area bounded by the centre line of demising or partition walls separating one unit from another unit, the exterior face of all exterior walls, and the exterior face of the corridor wall enclosing the adjoining unit. 6. Calculation of balcony area is measured as the area bounded by the centre line of demising or partition walls separating one unit from another unit, the outmost face of the enclosing guard and the external face of the adjoining balcony. 7. The units are measured at typical floor in the building. Columns may vary in size depending on the floor level. 8. For each unit type, unit sizes and details might be slightly different. Please refer to the sales and purchase agreement for the actual size of each specific unit.

# FLOOR PLANS

## 2 - BEDROOM

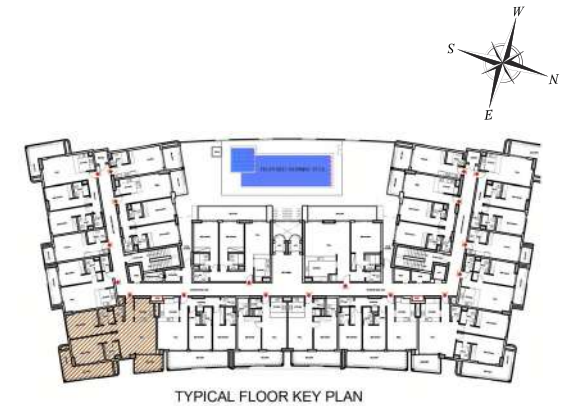
### Unit - 03



TOTAL AREA  
120.62 M<sup>2</sup>      1298.34 F<sup>2</sup>

SUITE AREA  
88.59 M<sup>2</sup>      953.57 F<sup>2</sup>

BALCONY  
32.03 M<sup>2</sup>      344.77 F<sup>2</sup>



Disclaimer: 1. All room dimensions are measured to structural elements and exclude wall finishes and construction tolerances. 2. All dimensions have been provided by our consultant architects. 3. All materials, dimensions and drawings are approximate. Information is subject to change without notice. 4. Actual suite area may vary from the stated area. Drawings not to scale. The developer reserves the right to make revisions. 5. Calculation of suite area is measured as the area bounded by the centre line of demising or partition walls separating one unit from another unit, the exterior face of all exterior walls, and the exterior face of the corridor wall enclosing the adjoining unit. 6. Calculation of balcony area is measured as the area bounded by the centre line of demising or partition walls separating one unit from another unit, the outmost face of the enclosing guard and the external face of the adjoining balcony. 7. The units are measured at typical floor in the building. Columns may vary in size depending on the floor level. 8. For each unit type, unit sizes and details might be slightly different. Please refer to the sales and purchase agreement for the actual size of each specific unit.

# FLOOR PLANS

## 1-BEDROOM



### Unit - 04

#### TOTAL AREA

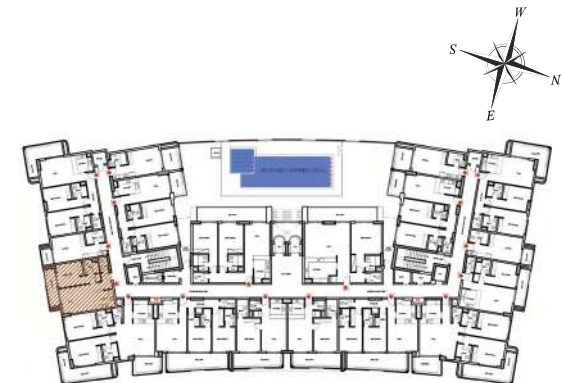
62.53 M<sup>2</sup>      673.07 F<sup>2</sup>

#### SUITE AREA

51.85 M<sup>2</sup>      558.11 F<sup>2</sup>

#### BALCONY

10.68 M<sup>2</sup>      114.96 F<sup>2</sup>



TYPICAL FLOOR KEY PLAN

Disclaimer: 1. All room dimensions are measured to structural elements and exclude wall finishes and construction tolerances. 2. All dimensions have been provided by our consultant architects. 3. All materials, dimensions and drawings are approximate. Information is subject to change without notice. 4. Actual suite area may vary from the stated area. Drawings not to scale. The developer reserves the right to make revisions. 5. Calculation of suite area is measured as the area bounded by the centre line of demising or partition walls separating one unit from another unit, the exterior face of all exterior walls, and the exterior face of the corridor wall enclosing the adjoining unit. 6. Calculation of balcony area is measured as the area bounded by the centre line of demising or partition walls separating one unit from another unit, the outmost face of the enclosing guard and the external face of the adjoining balcony. 7. The units are measured at typical floor in the building. Columns may vary in size depending on the floor level. 8. For each unit type, unit sizes and details might be slightly different. Please refer to the sales and purchase agreement for the actual size of each specific unit.

FLOOR PLANS  
STUDIO

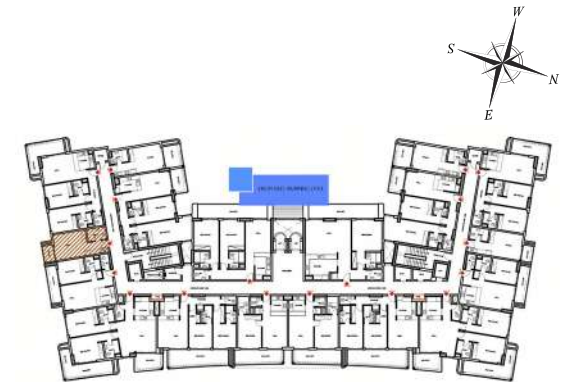


## Unit - 05

TOTAL AREA  
33.59 M<sup>2</sup>      361.56 F<sup>2</sup>

SUITE AREA  
27.47 M<sup>2</sup>      295.68 F<sup>2</sup>

BALCONY  
6.12 M<sup>2</sup>      65.88 F<sup>2</sup>



TYPICAL FLOOR KEY PLAN

Disclaimer: 1. All room dimensions are measured to structural elements and exclude wall finishes and construction tolerances. 2. All dimensions have been provided by our consultant architects. 3. All materials, dimensions and drawings are approximate. Information is subject to change without notice. 4. Actual suite area may vary from the stated area. Drawings not to scale. The developer reserves the right to make revisions. 5. Calculation of suite area is measured as the area bounded by the centre line of demising or partition walls separating one unit from another unit, the exterior face of all exterior walls, and the exterior face of the corridor wall enclosing the adjoining unit. 6. Calculation of balcony area is measured as the area bounded by the centre line of demising or partition walls separating one unit from another unit, the outmost face of the enclosing guard and the external face of the adjoining balcony. 7. The units are measured at typical floor in the building. Columns may vary in size depending on the floor level. 8. For each unit type, unit sizes and details might be slightly different. Please refer to the sales and purchase agreement for the actual size of each specific unit.

# FLOOR PLANS

## 2 - BEDROOM

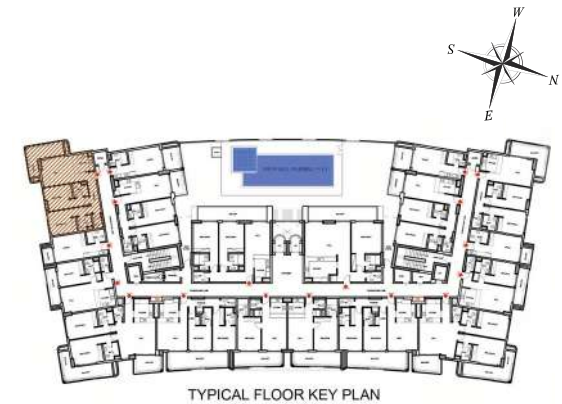
### Unit - 06



TOTAL AREA  
97.51 M<sup>2</sup>      1045.71 F<sup>2</sup>

SUITE AREA  
77.13 M<sup>2</sup>      830.22 F<sup>2</sup>

BALCONY  
20.02 M<sup>2</sup>      215.49 F<sup>2</sup>



Disclaimer: 1. All room dimensions are measured to structural elements and exclude wall finishes and construction tolerances. 2. All dimensions have been provided by our consultant architects. 3. All materials, dimensions and drawings are approximate. Information is subject to change without notice. 4. Actual suite area may vary from the stated area. Drawings not to scale. The developer reserves the right to make revisions. 5. Calculation of suite area is measured as the area bounded by the centre line of demising or partition walls separating one unit from another unit, the exterior face of all exterior walls, and the exterior face of the corridor wall enclosing the adjoining unit. 6. Calculation of balcony area is measured as the area bounded by the centre line of demising or partition walls separating one unit from another unit, the outmost face of the enclosing guard and the external face of the adjoining balcony. 7. The units are measured at typical floor in the building. Columns may vary in size depending on the floor level. 8. For each unit type, unit sizes and details might be slightly different. Please refer to the sales and purchase agreement for the actual size of each specific unit.

# FLOOR PLANS

## STUDIO

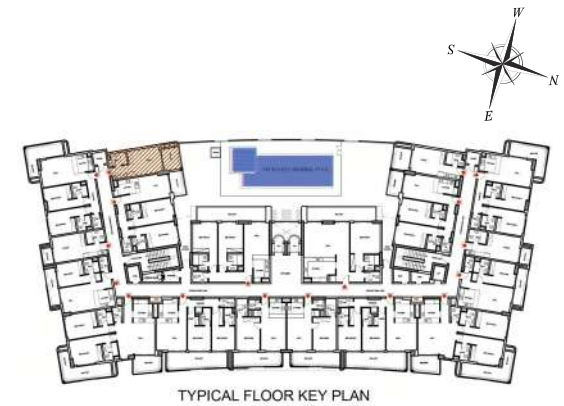


## Unit - 07

TOTAL AREA  
35.68 M<sup>2</sup>                      384.06 F<sup>2</sup>

SUITE AREA  
26.98 M<sup>2</sup>                        290.41 F<sup>2</sup>

BALCONY  
8.70 M<sup>2</sup>                         93.65 F<sup>2</sup>



Disclaimer: 1. All room dimensions are measured to structural elements and exclude wall finishes and construction tolerances. 2. All dimensions have been provided by our consultant architects. 3. All materials, dimensions and drawings are approximate. Information is subject to change without notice. 4. Actual suite area may vary from the stated area. Drawings not to scale. The developer reserves the right to make revisions. 5. Calculation of suite area is measured as the area bounded by the centre line of demising or partition walls separating one unit from another unit, the exterior face of all exterior walls, and the exterior face of the corridor wall enclosing the adjoining unit. 6. Calculation of balcony area is measured as the area bounded by the centre line of demising or partition walls separating one unit from another unit, the outmost face of the enclosing guard and the external face of the adjoining balcony. 7. The units are measured at typical floor in the building. Columns may vary in size depending on the floor level. 8. For each unit type, unit sizes and details might be slightly different. Please refer to the sales and purchase agreement for the actual size of each specific unit.

# FLOOR PLANS

## 2-BEDROOM

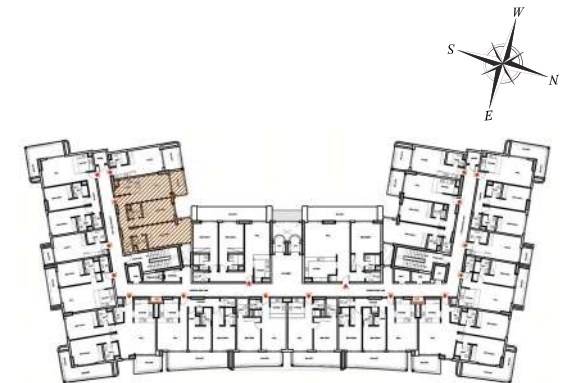


### Unit - 08

TOTAL AREA  
92.20 M<sup>2</sup>                      992.43 F<sup>2</sup>

SUITE AREA  
84.29 M<sup>2</sup>                      907.29 F<sup>2</sup>

BALCONY  
7.91 M<sup>2</sup>                      85.41 F<sup>2</sup>



TYPICAL FLOOR KEY PLAN

Disclaimer: 1. All room dimensions are measured to structural elements and exclude wall finishes and construction tolerances. 2. All dimensions have been provided by our consultant architects. 3. All materials, dimensions and drawings are approximate. Information is subject to change without notice. 4. Actual suite area may vary from the stated area. Drawings not to scale. The developer reserves the right to make revisions. 5. Calculation of suite area is measured as the area bounded by the centre line of demising or partition walls separating one unit from another unit, the exterior face of all exterior walls, and the exterior face of the corridor wall enclosing the adjoining unit. 6. Calculation of balcony area is measured as the area bounded by the centre line of demising or partition walls separating one unit from another unit, the outmost face of the enclosing guard and the external face of the adjoining balcony. 7. The units are measured at typical floor in the building. Columns may vary in size depending on the floor level. 8. For each unit type, unit sizes and details might be slightly different. Please refer to the sales and purchase agreement for the actual size of each specific unit.

# FLOOR PLANS

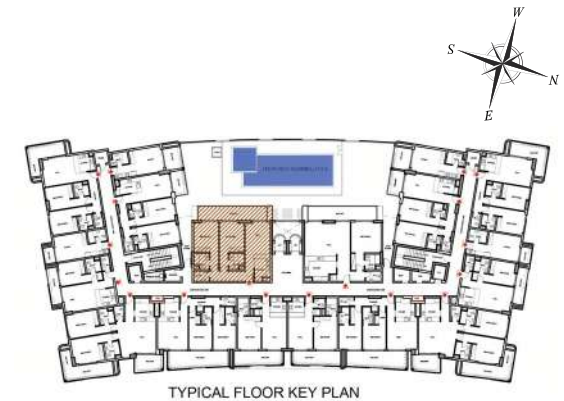
## 2 - BEDROOM

### Unit - 09

TOTAL AREA  
112.14 M<sup>2</sup>      1207.06 F<sup>2</sup>

SUITE AREA  
87.44 M<sup>2</sup>      941.20 F<sup>2</sup>

BALCONY  
24.70 M<sup>2</sup>      265.87 F<sup>2</sup>



Disclaimer: 1. All room dimensions are measured to structural elements and exclude wall finishes and construction tolerances. 2. All dimensions have been provided by our consultant architects. 3. All materials, dimensions and drawings are approximate. Information is subject to change without notice. 4. Actual suite area may vary from the stated area. Drawings not to scale. The developer reserves the right to make revisions. 5. Calculation of suite area is measured as the area bounded by the centre line of demising or partition walls separating one unit from another unit, the exterior face of all exterior walls, and the exterior face of the corridor wall enclosing the adjoining unit. 6. Calculation of balcony area is measured as the area bounded by the centre line of demising or partition walls separating one unit from another unit, the outmost face of the enclosing guard and the external face of the adjoining balcony. 7. The units are measured at typical floor in the building. Columns may vary in size depending on the floor level. 8. For each unit type, unit sizes and details might be slightly different. Please refer to the sales and purchase agreement for the actual size of each specific unit.

# FLOOR PLANS

## 1-BEDROOM

### Unit - 10



TOTAL AREA  
112.52 M<sup>2</sup>      1211.16 F<sup>2</sup>

SUITE AREA  
87.86 M<sup>2</sup>      945.72 F<sup>2</sup>

BALCONY  
24.66 M<sup>2</sup>      265.44 F<sup>2</sup>



TYPICAL FLOOR KEY PLAN

Disclaimer: 1. All room dimensions are measured to structural elements and exclude wall finishes and construction tolerances. 2. All dimensions have been provided by our consultant architects. 3. All materials, dimensions and drawings are approximate. Information is subject to change without notice. 4. Actual suite area may vary from the stated area. Drawings not to scale. The developer reserves the right to make revisions. 5. Calculation of suite area is measured as the area bounded by the centre line of demising or partition walls separating one unit from another unit, the exterior face of all exterior walls, and the exterior face of the corridor wall enclosing the adjoining unit. 6. Calculation of balcony area is measured as the area bounded by the centre line of demising or partition walls separating one unit from another unit, the outmost face of the enclosing guard and the external face of the adjoining balcony. 7. The units are measured at typical floor in the building. Columns may vary in size depending on the floor level. 8. For each unit type, unit sizes and details might be slightly different. Please refer to the sales and purchase agreement for the actual size of each specific unit.

## FLOOR PLANS

### 2 - BEDROOM



## Unit - 11

### TOTAL AREA

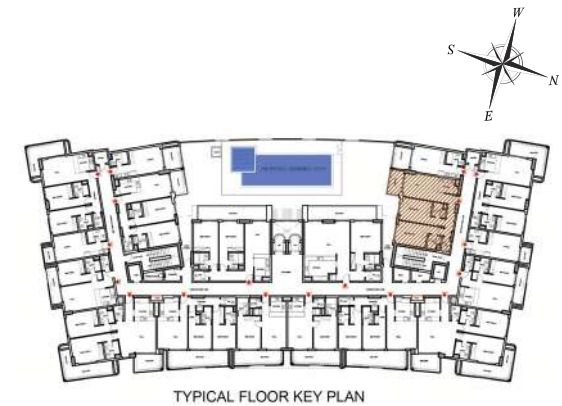
92.07 M<sup>2</sup>      991.03 F<sup>2</sup>

### SUITE AREA

84.11 M<sup>2</sup>      905.35 F<sup>2</sup>

### BALCONY

7.96 M<sup>2</sup>      85.68 F<sup>2</sup>



Disclaimer: 1. All room dimensions are measured to structural elements and exclude wall finishes and construction tolerances. 2. All dimensions have been provided by our consultant architects. 3. All materials, dimensions and drawings are approximate. Information is subject to change without notice. 4. Actual suite area may vary from the stated area. Drawings not to scale. The developer reserves the right to make revisions. 5. Calculation of suite area is measured as the area bounded by the centre line of demising or partition walls separating one unit from another unit, the exterior face of all exterior walls, and the exterior face of the corridor wall enclosing the adjoining unit. 6. Calculation of balcony area is measured as the area bounded by the centre line of demising or partition walls separating one unit from another unit, the outmost face of the enclosing guard and the external face of the adjoining balcony. 7. The units are measured at typical floor in the building. Columns may vary in size depending on the floor level. 8. For each unit type, unit sizes and details might be slightly different. Please refer to the sales and purchase agreement for the actual size of each specific unit.

# FLOOR PLANS

## STUDIO

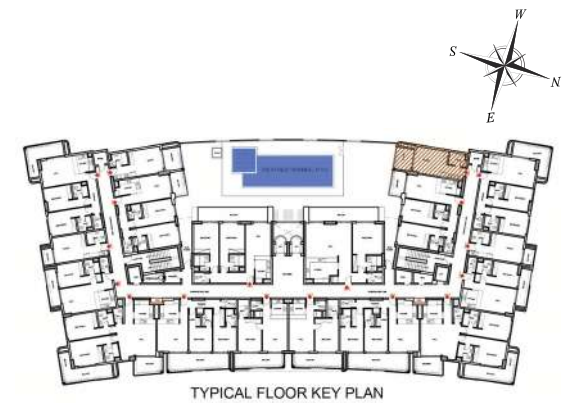


## Unit - 12

TOTAL AREA  
35.55 M<sup>2</sup>      382.66 F<sup>2</sup>

SUITE AREA  
26.93 M<sup>2</sup>      289.87 F<sup>2</sup>

BALCONY  
8.62 M<sup>2</sup>      92.78 F<sup>2</sup>



Disclaimer: 1. All room dimensions are measured to structural elements and exclude wall finishes and construction tolerances. 2. All dimensions have been provided by our consultant architects. 3. All materials, dimensions and drawings are approximate. Information is subject to change without notice. 4. Actual suite area may vary from the stated area. Drawings not to scale. The developer reserves the right to make revisions. 5. Calculation of suite area is measured as the area bounded by the centre line of demising or partition walls separating one unit from another unit, the exterior face of all exterior walls, and the exterior face of the corridor wall enclosing the adjoining unit. 6. Calculation of balcony area is measured as the area bounded by the centre line of demising or partition walls separating one unit from another unit, the outmost face of the enclosing guard and the external face of the adjoining balcony. 7. The units are measured at typical floor in the building. Columns may vary in size depending on the floor level. 8. For each unit type, unit sizes and details might be slightly different. Please refer to the sales and purchase agreement for the actual size of each specific unit.

# FLOOR PLANS

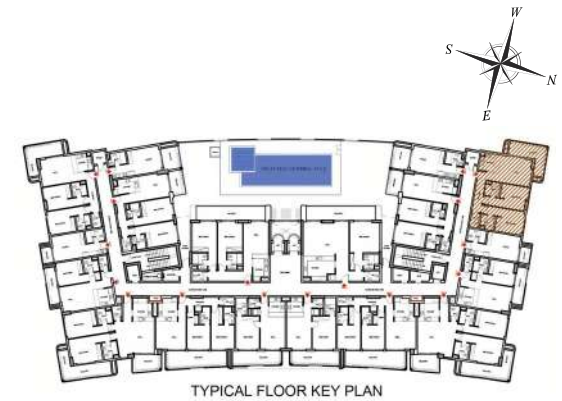
## 2 - BEDROOM

### Unit - 13

TOTAL AREA  
97.32 M<sup>2</sup>      1047.54 F<sup>2</sup>

SUITE AREA  
77.29 M<sup>2</sup>      831.94 F<sup>2</sup>

BALCONY  
20.03 M<sup>2</sup>      215.6 F<sup>2</sup>



Disclaimer: 1. All room dimensions are measured to structural elements and exclude wall finishes and construction tolerances. 2. All dimensions have been provided by our consultant architects. 3. All materials, dimensions and drawings are approximate. Information is subject to change without notice. 4. Actual suite area may vary from the stated area. Drawings not to scale. The developer reserves the right to make revisions. 5. Calculation of suite area is measured as the area bounded by the centre line of demising or partition walls separating one unit from another unit, the exterior face of all exterior walls, and the exterior face of the corridor wall enclosing the adjoining unit. 6. Calculation of balcony area is measured as the area bounded by the centre line of demising or partition walls separating one unit from another unit, the outmost face of the enclosing guard and the external face of the adjoining balcony. 7. The units are measured at typical floor in the building. Columns may vary in size depending on the floor level. 8. For each unit type, unit sizes and details might be slightly different. Please refer to the sales and purchase agreement for the actual size of each specific unit.

FLOOR PLANS  
STUDIO

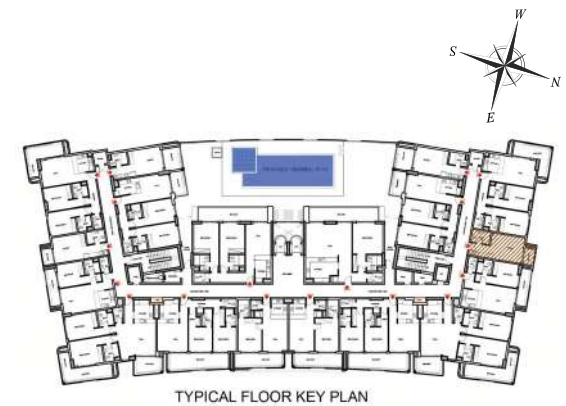


## Unit - 14

TOTAL AREA  
32.9 M<sup>2</sup>                      345.13 F<sup>2</sup>

SUITE AREA  
27.49 M<sup>2</sup>                      295.9 F<sup>2</sup>

BALCONY  
5.41 M<sup>2</sup>                      58.23 F<sup>2</sup>



TYPICAL FLOOR KEY PLAN

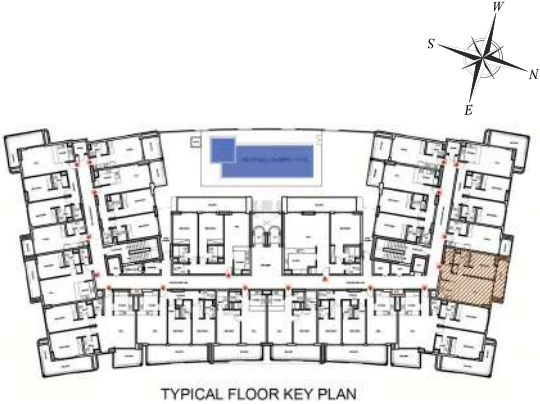
Disclaimer: 1. All room dimensions are measured to structural elements and exclude wall finishes and construction tolerances. 2. All dimensions have been provided by our consultant architects. 3. All materials, dimensions and drawings are approximate. Information is subject to change without notice. 4. Actual suite area may vary from the stated area. Drawings not to scale. The developer reserves the right to make revisions. 5. Calculation of suite area is measured as the area bounded by the centre line of demising or partition walls separating one unit from another unit, the exterior face of all exterior walls, and the exterior face of the corridor wall enclosing the adjoining unit. 6. Calculation of balcony area is measured as the area bounded by the centre line of demising or partition walls separating one unit from another unit, the outmost face of the enclosing guard and the external face of the adjoining balcony. 7. The units are measured at typical floor in the building. Columns may vary in size depending on the floor level. 8. For each unit type, unit sizes and details might be slightly different. Please refer to the sales and purchase agreement for the actual size of each specific unit.

FLOOR PLANS  
**1-BEDROOM**



**Unit - 15**

<b>TOTAL AREA</b>	
62.21 M <sup>2</sup>	669.62 F <sup>2</sup>
<hr/>	
<b>SUITE AREA</b>	
51.66 M <sup>2</sup>	556.06 F <sup>2</sup>
<hr/>	
<b>BALCONY</b>	
10.55 M <sup>2</sup>	113.56 F <sup>2</sup>



Disclaimer: 1. All room dimensions are measured to structural elements and exclude wall finishes and construction tolerances. 2. All dimensions have been provided by our consultant architects. 3. All materials, dimensions and drawings are approximate. Information is subject to change without notice. 4. Actual suite area may vary from the stated area. Drawings not to scale. The developer reserves the right to make revisions. 5. Calculation of suite area is measured as the area bounded by the centre line of demising or partition walls separating one unit from another unit, the exterior face of all exterior walls, and the exterior face of the corridor wall enclosing the adjoining unit. 6. Calculation of balcony area is measured as the area bounded by the centre line of demising or partition walls separating one unit from another unit, the outmost face of the enclosing guard and the external face of the adjoining balcony. 7. The units are measured at typical floor in the building. Columns may vary in size depending on the floor level. 8. For each unit type, unit sizes and details might be slightly different. Please refer to the sales and purchase agreement for the actual size of each specific unit.

# FLOOR PLANS

## 2 - BEDROOM



### Unit - 16

#### TOTAL AREA

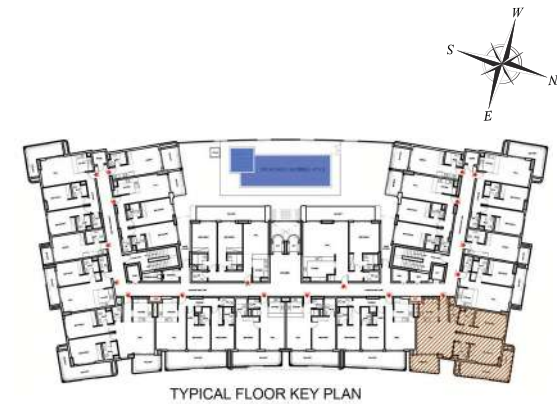
120.73 M<sup>2</sup>      1299.53 F<sup>2</sup>

#### SUITE AREA

88.76 M<sup>2</sup>      955.4 F<sup>2</sup>

#### BALCONY

31.97 M<sup>2</sup>      344.12 F<sup>2</sup>



Disclaimer: 1. All room dimensions are measured to structural elements and exclude wall finishes and construction tolerances. 2. All dimensions have been provided by our consultant architects. 3. All materials, dimensions and drawings are approximate. Information is subject to change without notice. 4. Actual suite area may vary from the stated area. Drawings not to scale. The developer reserves the right to make revisions. 5. Calculation of suite area is measured as the area bounded by the centre line of demising or partition walls separating one unit from another unit, the exterior face of all exterior walls, and the exterior face of the corridor wall enclosing the adjoining unit. 6. Calculation of balcony area is measured as the area bounded by the centre line of demising or partition walls separating one unit from another unit, the outmost face of the enclosing guard and the external face of the adjoining balcony. 7. The units are measured at typical floor in the building. Columns may vary in size depending on the floor level. 8. For each unit type, unit sizes and details might be slightly different. Please refer to the sales and purchase agreement for the actual size of each specific unit.

# FLOOR PLANS

## 2 - BEDROOM

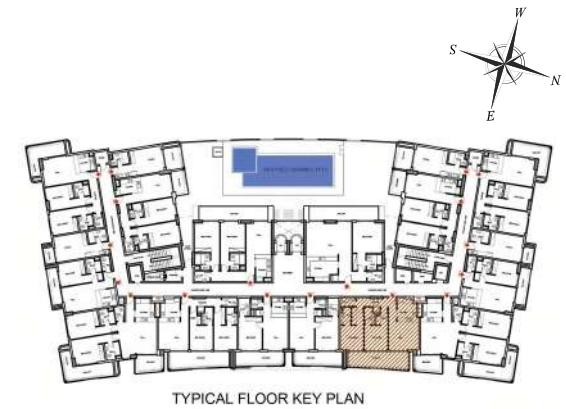


### Unit - 17

TOTAL AREA  
100.6 M<sup>2</sup>      1082.85 F<sup>2</sup>

SUITE AREA  
78.39 M<sup>2</sup>      843.78 F<sup>2</sup>

BALCONY  
22.21 M<sup>2</sup>      239.07 F<sup>2</sup>



Disclaimer: 1. All room dimensions are measured to structural elements and exclude wall finishes and construction tolerances. 2. All dimensions have been provided by our consultant architects. 3. All materials, dimensions and drawings are approximate. Information is subject to change without notice. 4. Actual suite area may vary from the stated area. Drawings not to scale. The developer reserves the right to make revisions. 5. Calculation of suite area is measured as the area bounded by the centre line of demising or partition walls separating one unit from another unit, the exterior face of all exterior walls, and the exterior face of the corridor wall enclosing the adjoining unit. 6. Calculation of balcony area is measured as the area bounded by the centre line of demising or partition walls separating one unit from another unit, the outmost face of the enclosing guard and the external face of the adjoining balcony. 7. The units are measured at typical floor in the building. Columns may vary in size depending on the floor level. 8. For each unit type, unit sizes and details might be slightly different. Please refer to the sales and purchase agreement for the actual size of each specific unit.

# FLOOR PLANS

## 1-BEDROOM

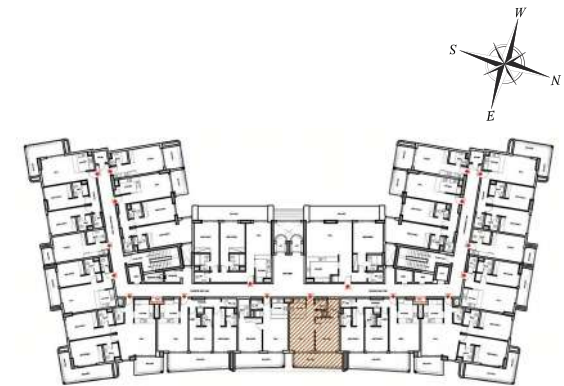


## Unit - 18

TOTAL AREA  
66.1 M<sup>2</sup>      711.49 F<sup>2</sup>

SUITE AREA  
49.74 M<sup>2</sup>      535.4 F<sup>2</sup>

BALCONY  
16.36 M<sup>2</sup>      176.1 F<sup>2</sup>



TYPICAL FLOOR KEY PLAN

Disclaimer: 1. All room dimensions are measured to structural elements and exclude wall finishes and construction tolerances. 2. All dimensions have been provided by our consultant architects. 3. All materials, dimensions and drawings are approximate. Information is subject to change without notice. 4. Actual suite area may vary from the stated area. Drawings not to scale. The developer reserves the right to make revisions. 5. Calculation of suite area is measured as the area bounded by the centre line of demising or partition walls separating one unit from another unit, the exterior face of all exterior walls, and the exterior face of the corridor wall enclosing the adjoining unit. 6. Calculation of balcony area is measured as the area bounded by the centre line of demising or partition walls separating one unit from another unit, the outmost face of the enclosing guard and the external face of the adjoining balcony. 7. The units are measured at typical floor in the building. Columns may vary in size depending on the floor level. 8. For each unit type, unit sizes and details might be slightly different. Please refer to the sales and purchase agreement for the actual size of each specific unit.