



Greenfield Living

Urban Elegance. Natural Harmony.

Luxury residences in Dubai South, where design meets purpose, and every detail feels like home.

Your Home, Steps from the World's Largest Airport

At Greenfield Living, every day begins with possibility.

Embrace the rhythm of a community built for tomorrow and make your home where Dubai's future unfolds shaped by innovation, inspired by nature, and sustained by belonging.



Where Design Meets Destiny



Envisioned as a city built around the people who power Dubai's progress, Dubai South is redefining urban living. Designed for balance, connectivity, and growth, it brings together business, lifestyle, and leisure within a single, thriving ecosystem. With world-class infrastructure, sustainable communities, and direct proximity to Al Maktoum International Airport and Expo City, Dubai South stands as the new pulse of modern Dubai.

Here, every detail reflects Dubai's forward-looking vision — from green mobility and smart infrastructure to sustainable residential clusters. It's not just a place to live, but a blueprint for the future of urban life.

Dubai Where the World Comes Together

A city that bridges continents and cultures, Dubai stands as a global symbol of progress and vision. From its thriving economy to its seamless connectivity, it's not just a destination, it's where your story begins.

A city that bridges continents and cultures, Dubai stands as a global symbol of progress and vision. From its thriving economy to its seamless connectivity, it's not just a destination, it's where your story begins.

- ✦ Ranked among the Top 5 global economies
- ✦ 16th in the world for ease of doing business
- ✦ 5th safest city globally
- ✦ Tax-efficient investment ecosystem
- ✦ Strategic hub connecting Europe, Asia & Africa
- ✦ Golden visa through property investment





Dubai South The City of Future

Envisioned as a city built around the people who power Dubai's progress, Dubai South is redefining urban living. Designed for balance, connectivity, and growth, it brings together business, lifestyle, and leisure within a single, thriving ecosystem. With world-class infrastructure, sustainable communities, and direct proximity to Al Maktoum International Airport and Expo City, Dubai South stands as the new pulse of modern Dubai.

Here, every detail reflects Dubai's forward-looking vision — from green mobility and smart infrastructure to sustainable residential clusters. It's not just a place to live, but a blueprint for the future of urban life.

-  Integrated 145 sq. km master plan
-  Housing for 1 million residents
-  500,000 job opportunities
-  30 km from Jebel Ali Port
-  100% foreign ownerships

South of Dubai

Connectivity

Positioned at the crossroads of Dubai's most dynamic districts, this location offers effortless access to the city's business, leisure, and lifestyle hubs. Whether you're commuting for work, travelling internationally, or exploring the city's attractions, every destination is just a short drive away.

With its strategic placement near major highways and upcoming transit improvements, the area ensures smooth mobility and consistent connectivity. Residents and visitors benefit from quick access to key landmarks, premium retail destinations, and world-class infrastructure designed to support both everyday convenience and long-term growth.

This prime location brings together proximity and potential—making it ideal for those who value accessibility without compromising on comfort or opportunity. Here, connectivity becomes more than distance; it becomes a lifestyle advantage.

- + 8 mins - Al Maktoum International Airport
- + 13 mins - Expo City Dubai
- + 20 mins - The Outlet Village
- + 30 mins - Dubai Marina
- + 40 mins - Downtown Dubai

Greenfield Living

Downtown Dubai

Dubai Marina

Expo City Dubai

The Outlet Village

Al Maktoum International Airport

Urban Elegance Meets Future

Located in the heart of Dubai South, Greenfield Living offers thoughtfully designed residences that blend functionality with understated luxury. Enjoy the tranquility of a private community while being minutes away from Dubai's most dynamic destinations.



Premium Interiors
Elegant layouts with refined finishes.



Green Serenity
Landscaped spaces for peaceful living.



Smart Community
Modern infrastructure and prime connectivity.



Leisure Amenities
Pool, gym, play areas & rooftop recreation.



Turnkey Living
Effortless living supported by white goods.



Prime Investment
In Dubai South's fastest-growing district.



Project Type: **Residential**

Configuration: **G + 4 Floors**

Total Units: **52**

Unit Mix: **1-Bedroom + Study & 2-Bedroom Apartments**

Handover: **December 2026**



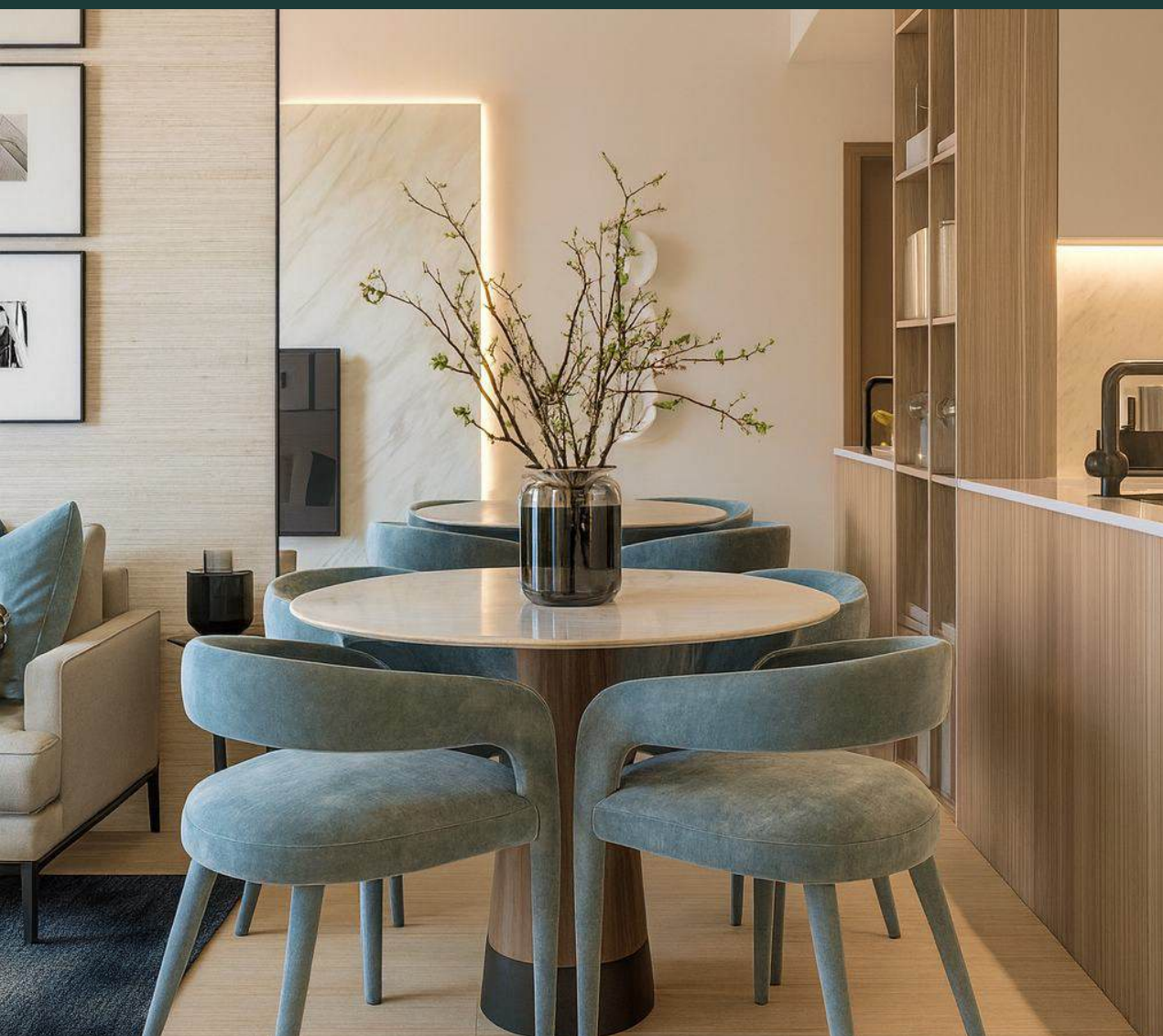
Crafted for Modern Living

A kitchen designed for modern living, where clean lines, premium fittings, and warm textures come together effortlessly. Every detail, from cabinetry to layout, is crafted for ease, efficiency, and everyday comfort.



Interiors that Elevate Everyday Life

Your living spaces are designed to feel open, welcoming, and effortlessly refined. Soft hues, comfortable textures, and abundant natural light create a sense of calm. Each element, from the proportions to the colour palette, is chosen to bring harmony to your everyday moments, whether you're relaxing, hosting, or simply enjoying quiet time at home.





A Home Designed Around You

The bathrooms are designed as quiet sanctuaries where clean lines, warm lighting, and premium finishes come together to create a sense of calm. Thoughtfully planned layouts, refined fixtures, and natural textures elevate everyday routines into moments of comfort and clarity. Every detail is crafted to bring a spa-like serenity into your home.

The bedrooms offer a retreat-like atmosphere, shaped to promote rest and wellbeing. Soft palettes, layered textures, and balanced proportions create a soothing environment that feels both intimate and expansive. With every element thoughtfully curated, the space becomes a personal haven designed for relaxation, reflection, and uninterrupted comfort.



Lifestyle & Amenities

Beyond your doorstep lies a world crafted for comfort, connection, and wellbeing. From the welcoming elegance of the lobby to thoughtfully designed spaces like the co-working lounge and fully equipped gym, Greenfield Living brings every aspect of convenience and lifestyle closer to home.





Rooftop Spaces for Elevated Living

Discover a rooftop designed not just for recreation, but for reflection. From tranquil yoga mornings to movie nights under the stars, this is where leisure finds new meaning.

- ✦ Zen Garden & Yoga Deck
- ✦ Outdoor Cinema
- ✦ Sky BBQ Lounge