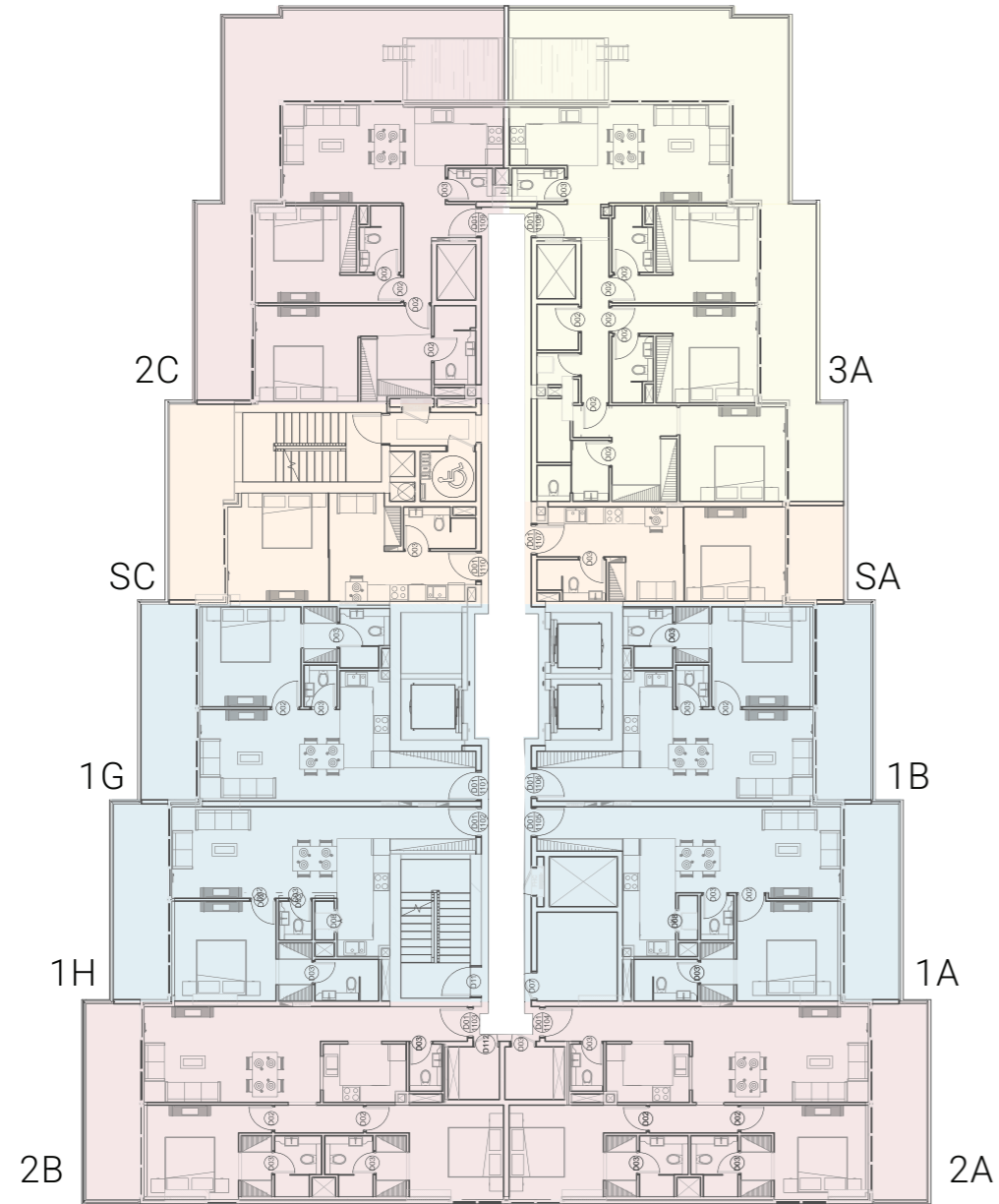


FLOOR PLANS



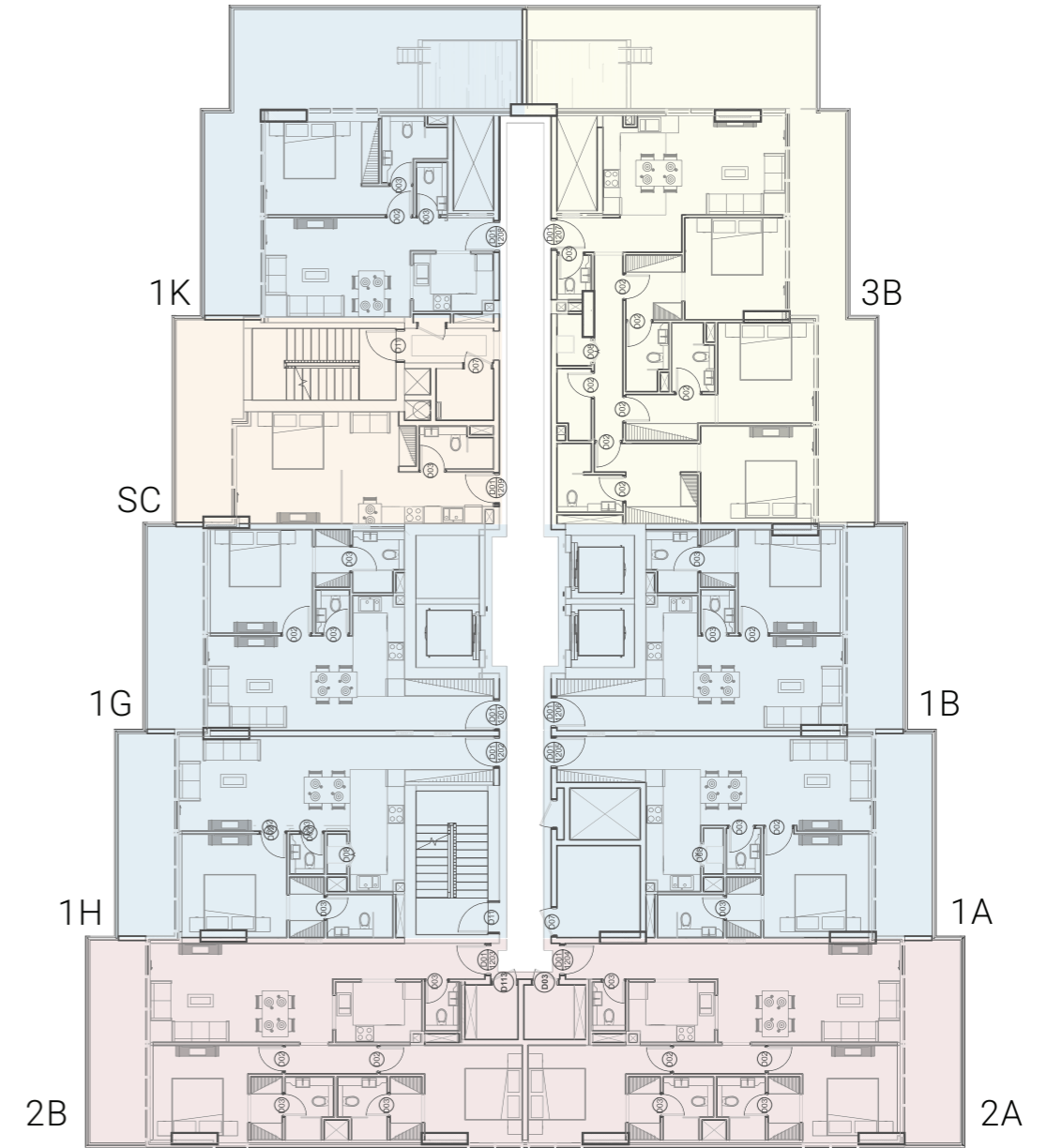
11TH FLOOR PLAN



■ Studios
 ■ 1 bedroom
 ■ 2 bedroom
 ■ 3 bedroom

NAME	COUNT PER FLOOR
1BHK	4
2BHK	3
3BHK	1
STUDIO	2
GRAND TOTAL	10

12TH FLOOR PLAN



■ Studios
 ■ 1 bedroom
 ■ 2 bedroom
 ■ 3 bedroom

NAME	COUNT PER FLOOR
1BHK	5
2BHK	2
3BHK	1
STUDIO	1
GRAND TOTAL:9	9

UNIT LAYOUTS

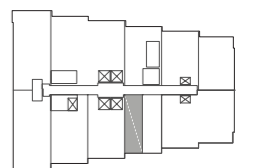


STUDIO



STUDIO - A

Suite Area: 350.90 SQFT | Balcony Area: 79.76 SQFT | Total Area: 430.66 SQFT

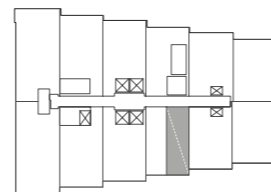
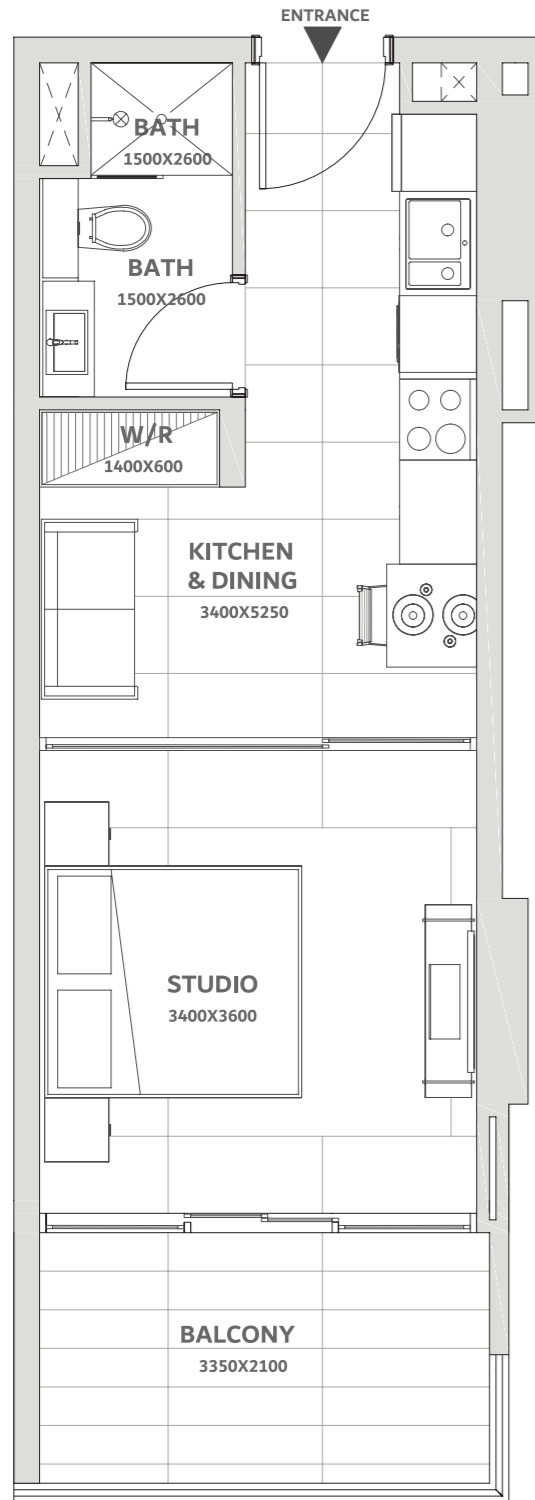


KEY PLAN
2nd to 7th Floor

* Images and layouts are for illustration purposes only. Actual specifications and dimensions may vary.

STUDIO - B

Suite Area: 351.76 SQFT | Balcony Area: 81.48 SQFT | Total Area: 433.25 SQFT

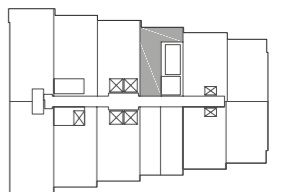
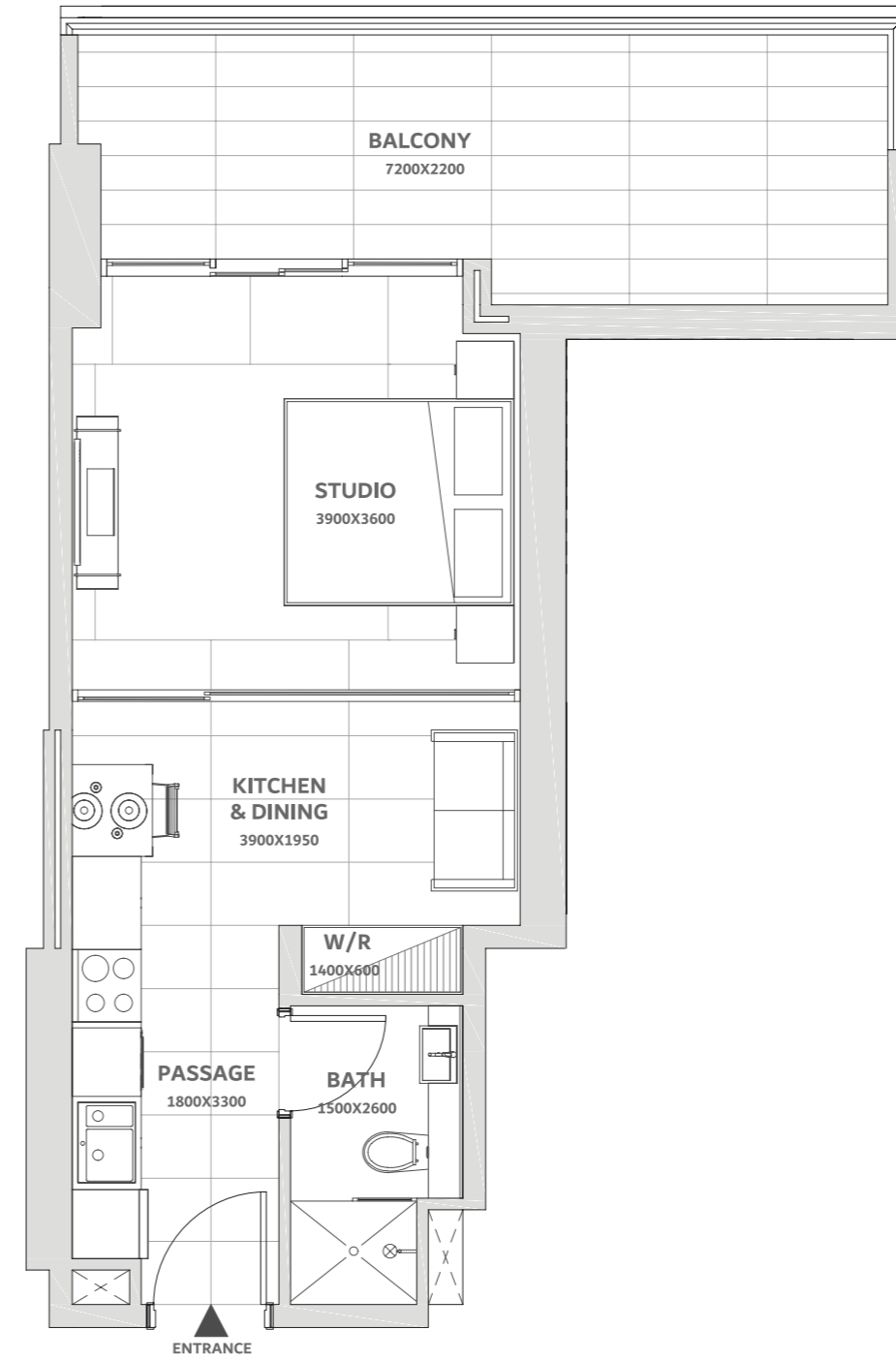


KEY PLAN
2nd to 7th Floor

* Images and layouts are for illustration purposes only. Actual specifications and dimensions may vary.

STUDIO - C

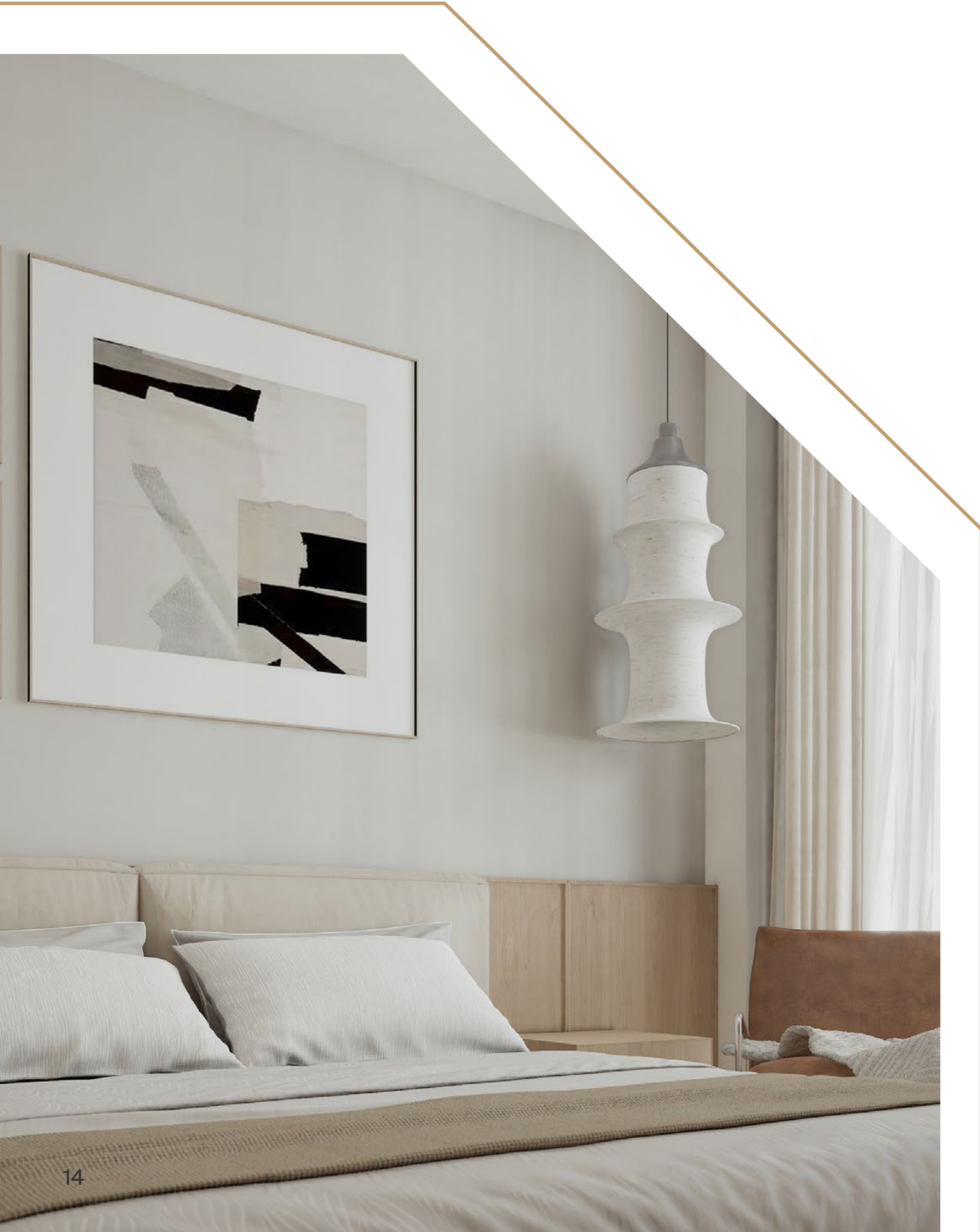
Suite Area: 384.38 SQFT | Balcony Area: 176.85 SQFT | Total Area: 561.23 SQFT



KEY PLAN
2nd to 7th & 12th Floor

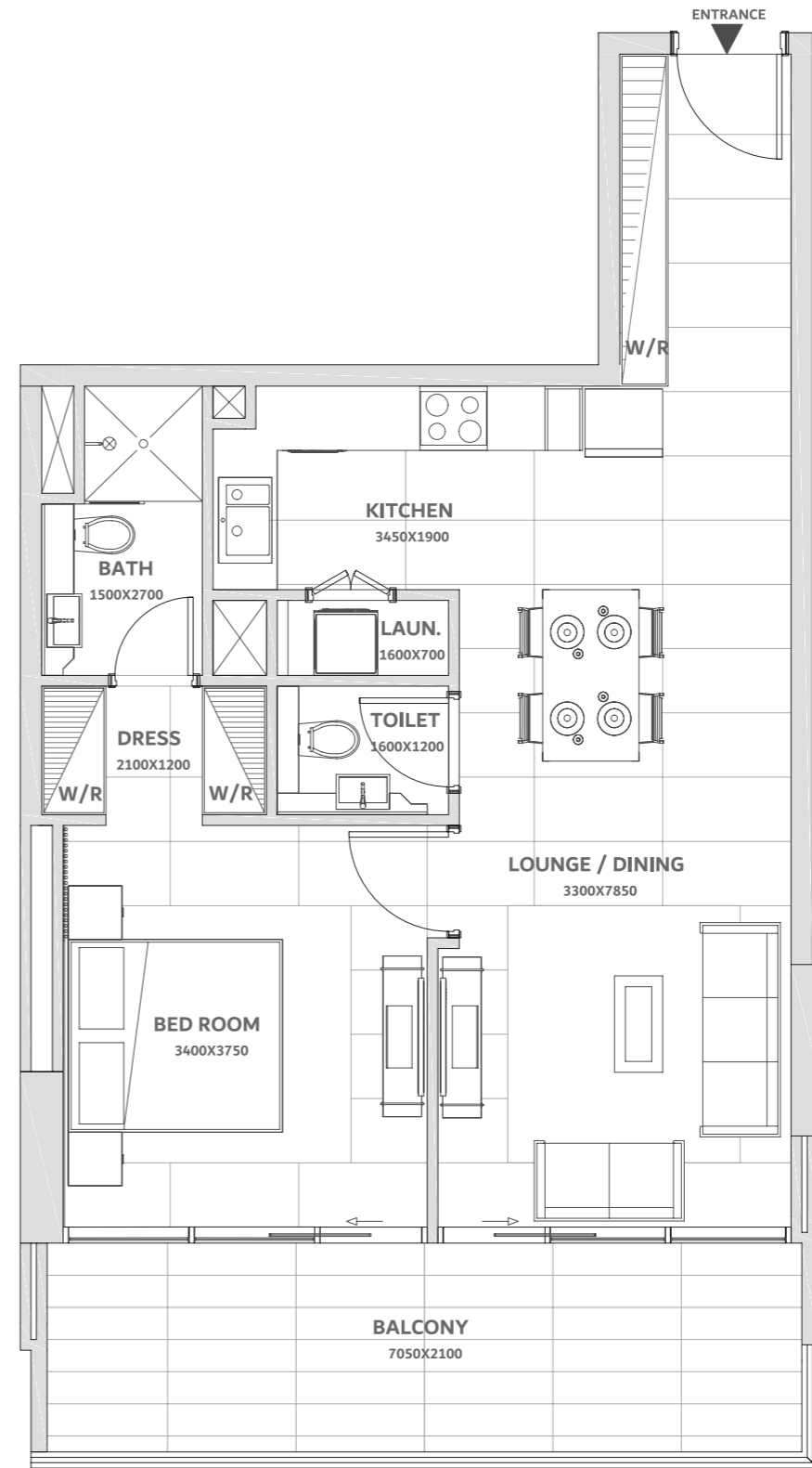
* Images and layouts are for illustration purposes only. Actual specifications and dimensions may vary.

1 BEDROOM



1 BHK - A

Suite Area: 671.88 SQFT | Balcony Area: 160.92 SQFT | Total Area: 832.80 SQFT

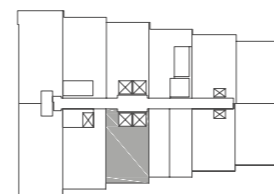
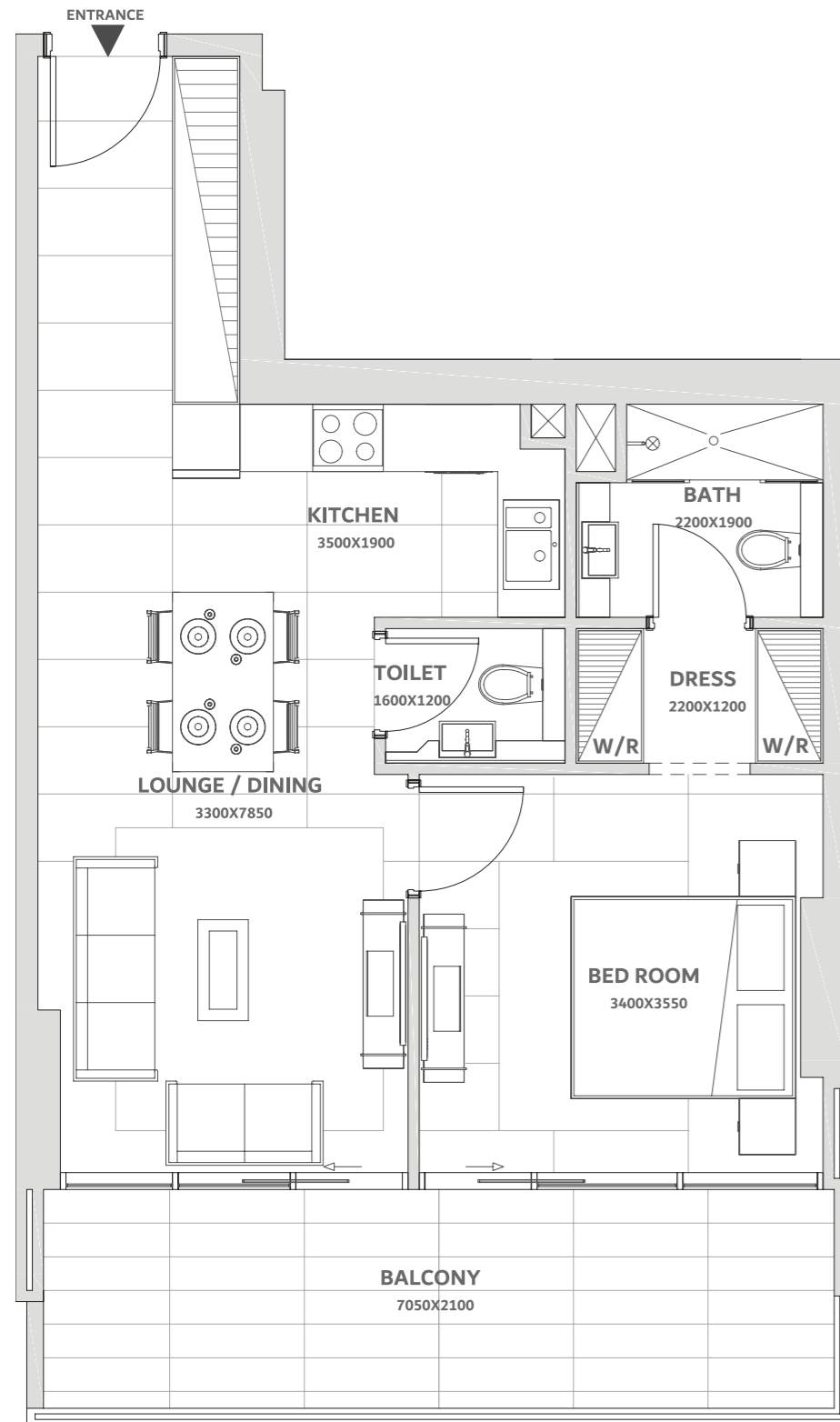


KEY PLAN
2nd to 12th Floor

* Images and layouts are for illustration purposes only. Actual specifications and dimensions may vary.

1 BHK - B

Suite Area: 611.82 SQFT | Balcony Area: 160.92 SQFT | Total Area: 772.74 SQFT

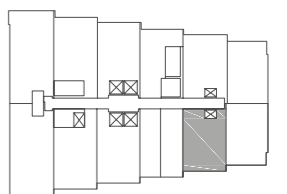
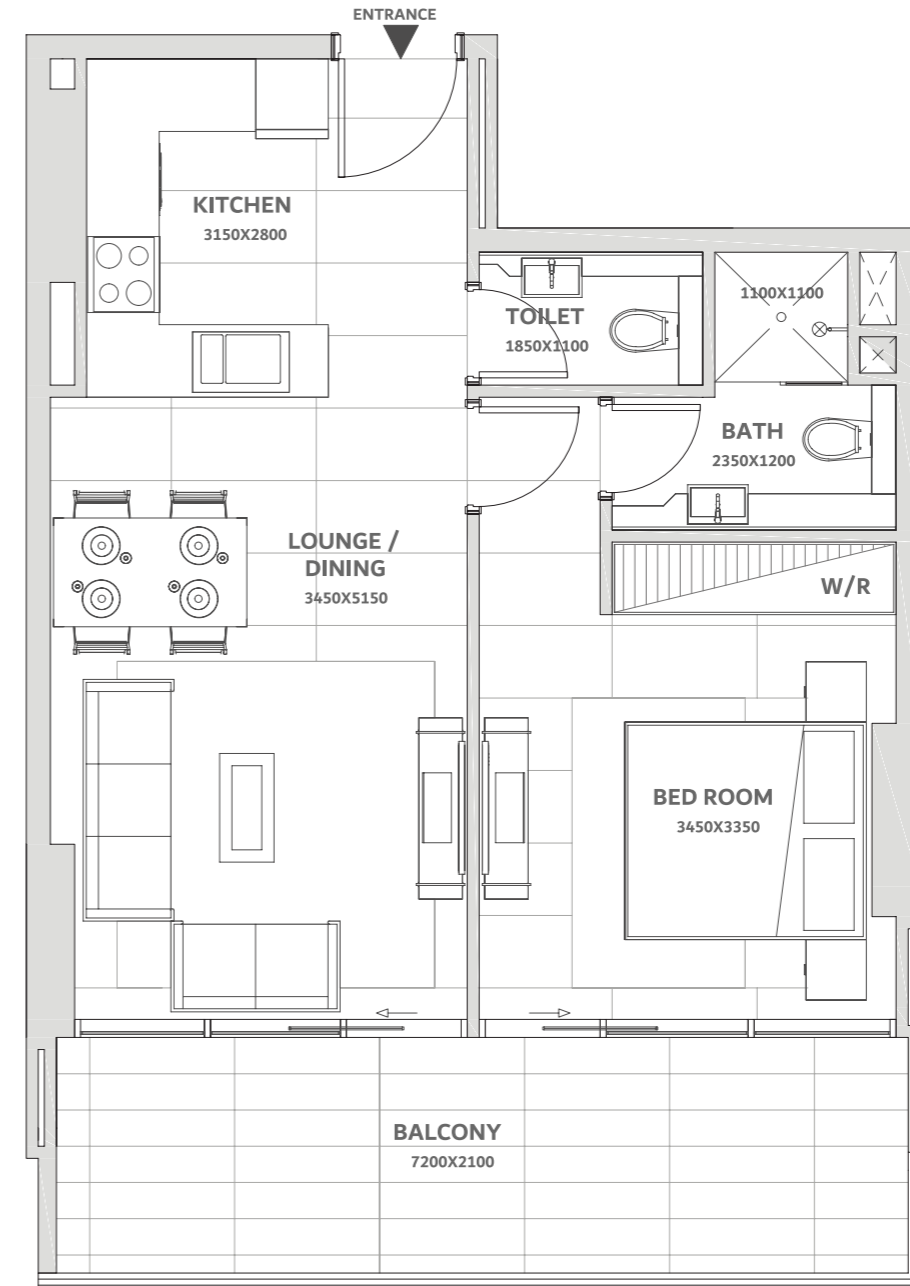


KEY PLAN
2nd to 12th Floor

* Images and layouts are for illustration purposes only. Actual specifications and dimensions may vary.

1 BHK - C

Suite Area: 557.25 SQFT | Balcony Area: 160.92 SQFT | Total Area: 718.17 SQFT

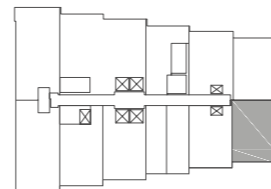
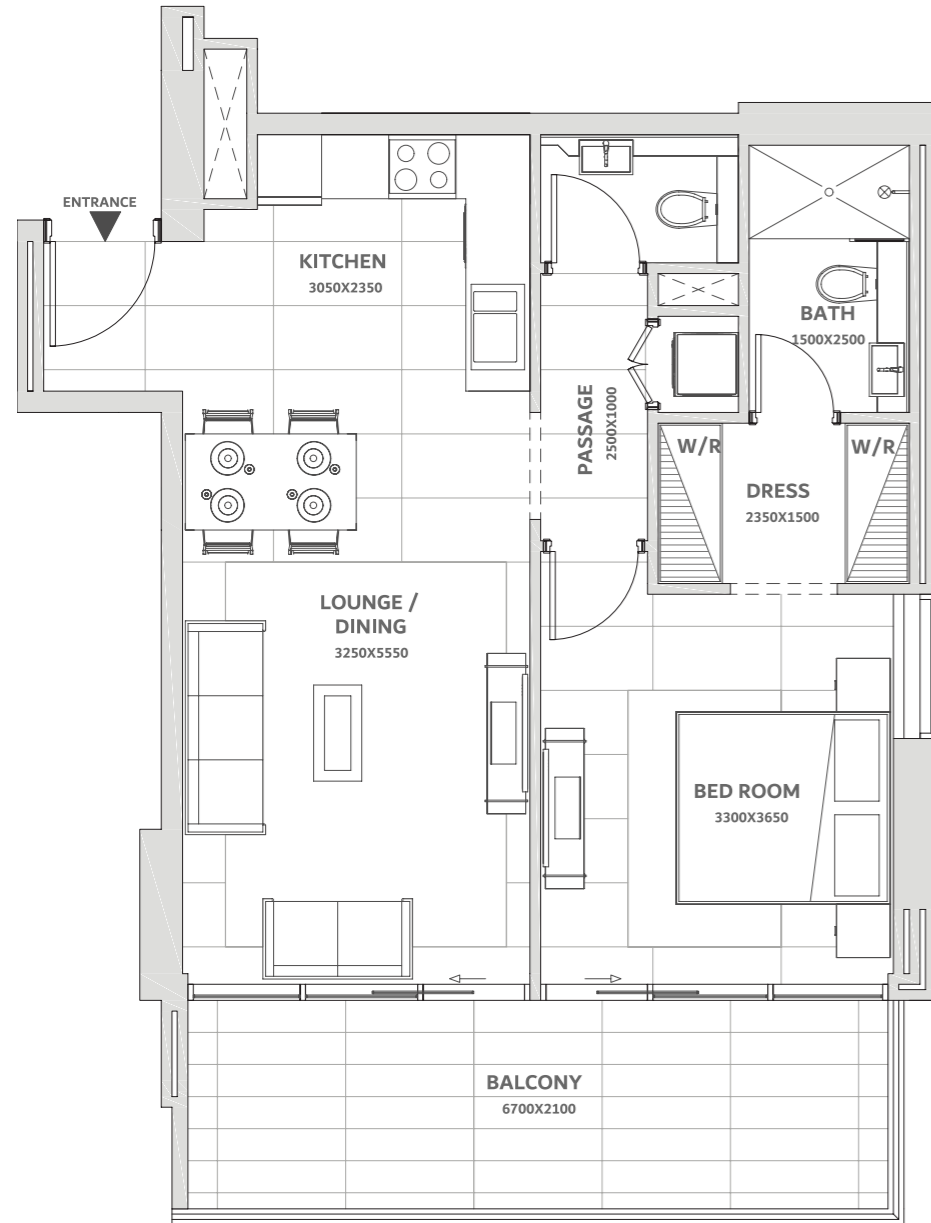


KEY PLAN
2nd to 7th Floor

* Images and layouts are for illustration purposes only. Actual specifications and dimensions may vary.

1 BHK - D

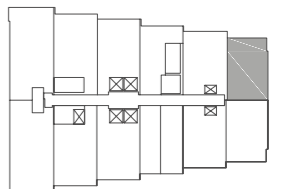
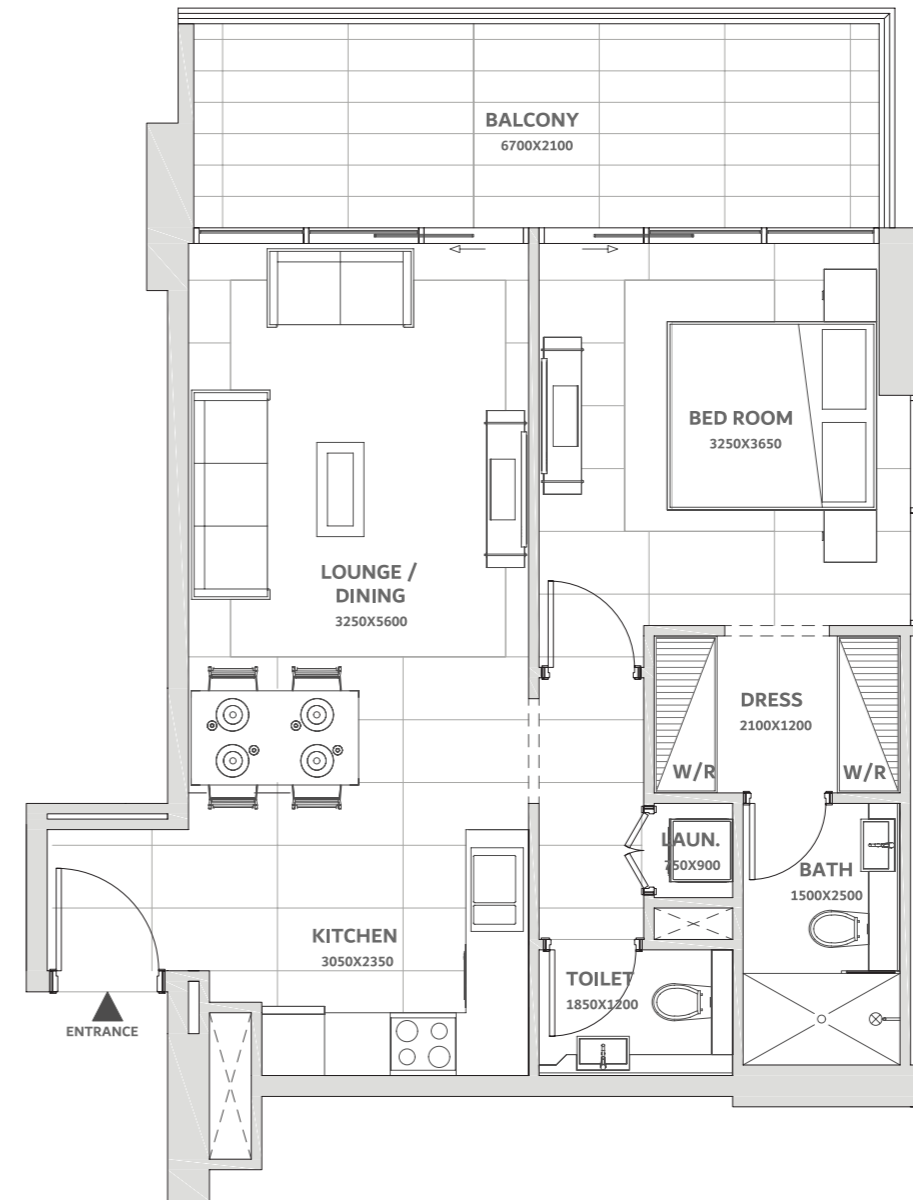
Suite Area: 631.52 SQFT | Balcony Area: 150.69 SQFT | Total Area: 782.21 SQFT



KEY PLAN
2nd to 7th Floor

1 BHK - E

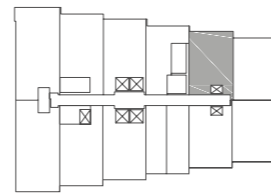
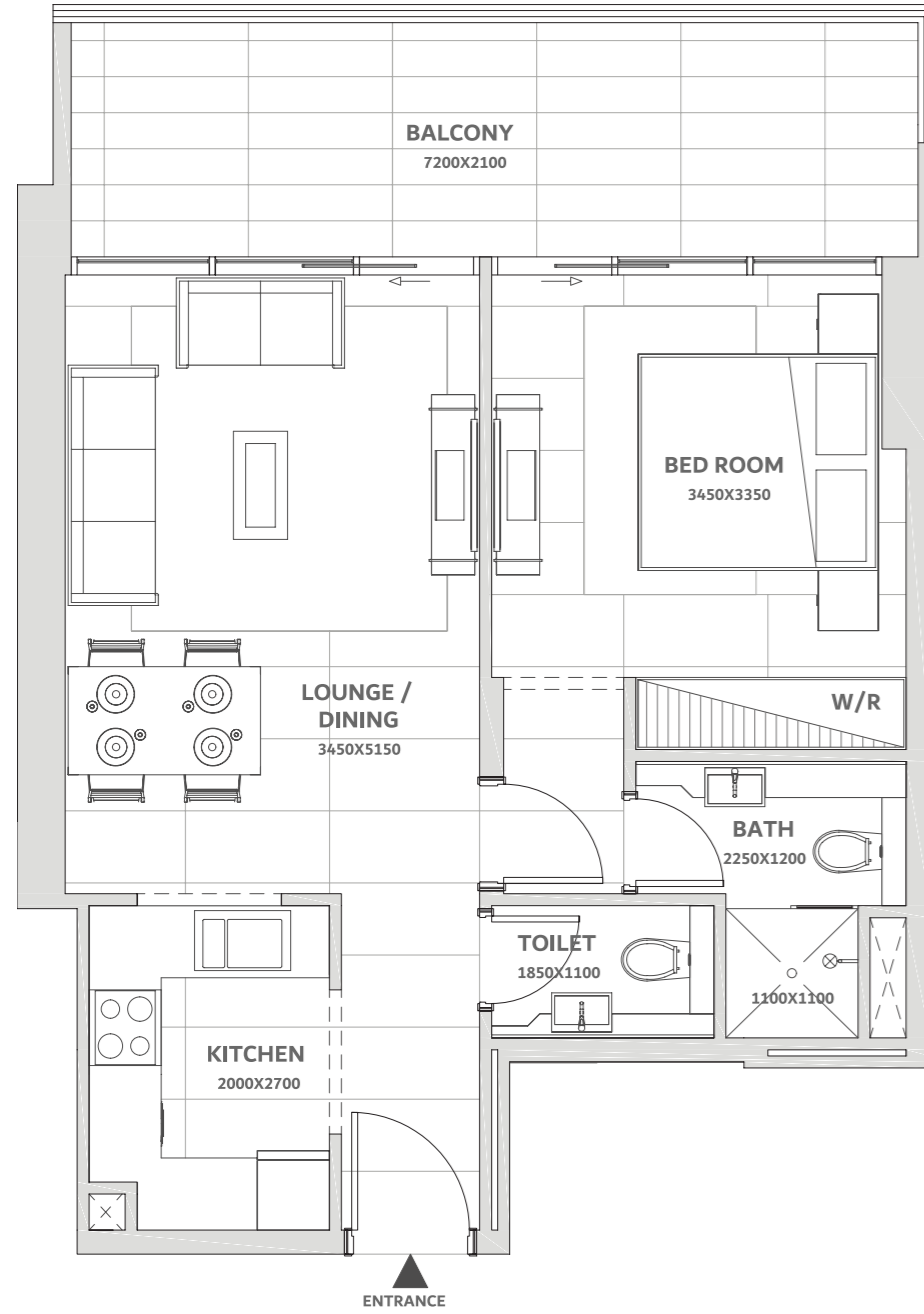
Suite Area: 630.23 SQFT | Balcony Area: 151.88 SQFT | Total Area: 782.11 SQFT



KEY PLAN
2nd to 7th Floor

1 BHK - F

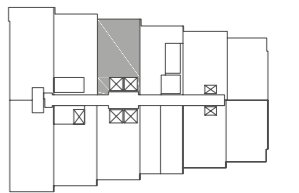
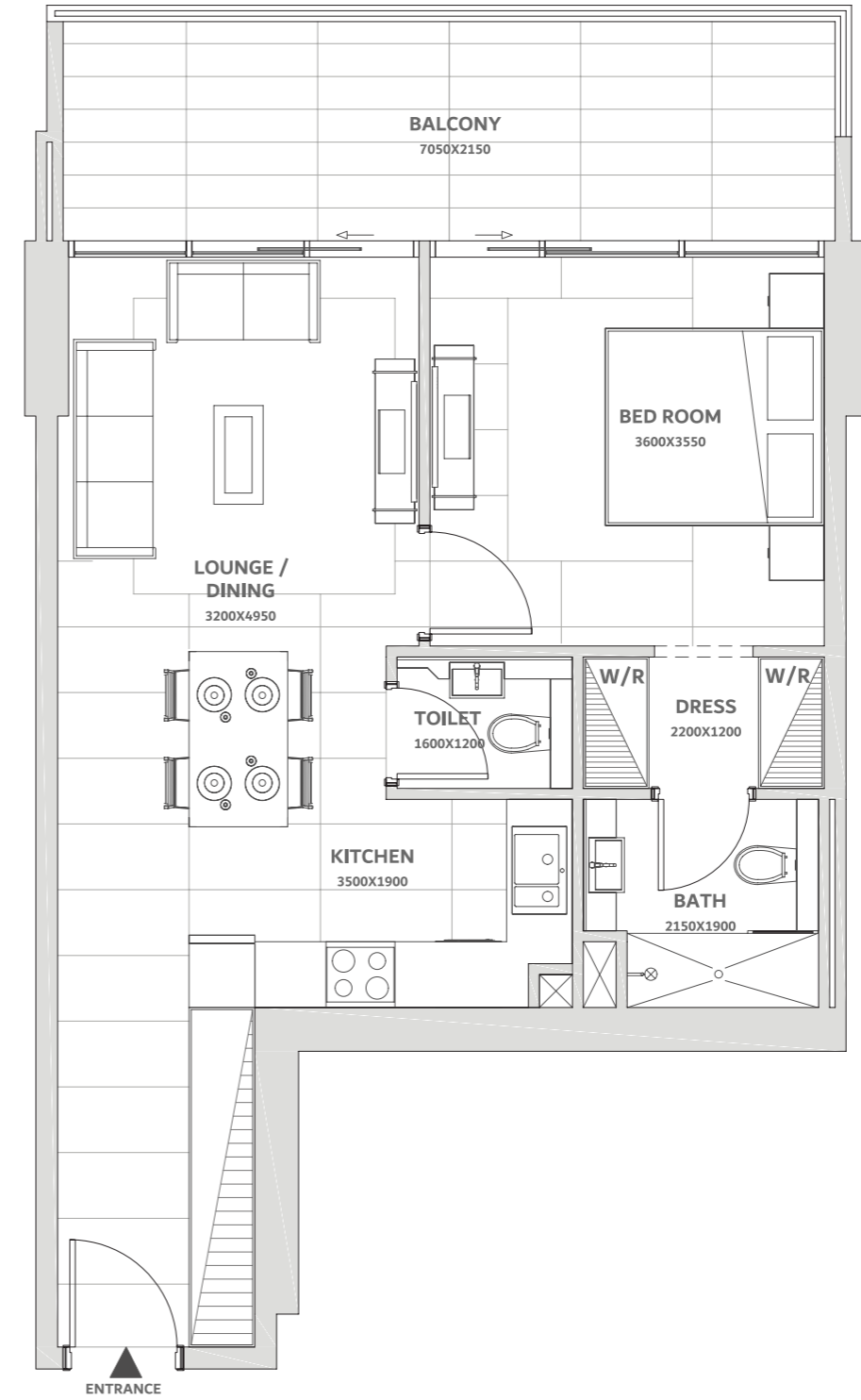
Suite Area: 559.19 SQFT | Balcony Area: 162.21 SQFT | Total Area: 721.40 SQFT



KEY PLAN
2nd to 7th Floor

1 BHK - G

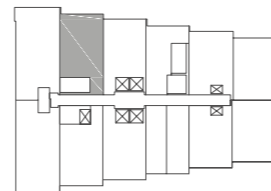
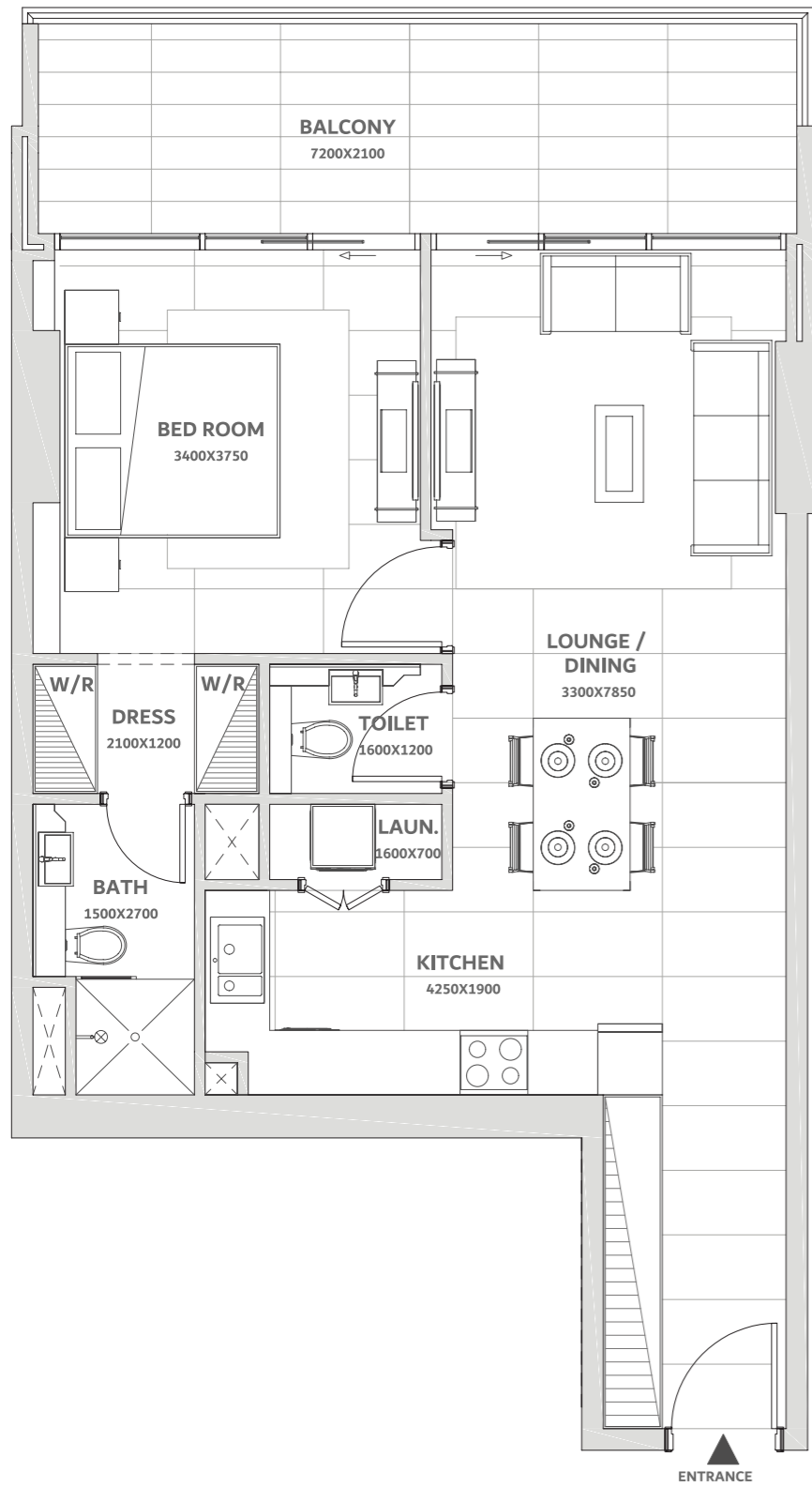
Suite Area: 616.77 SQFT | Balcony Area: 165.87 SQFT | Total Area: 782.64 SQFT



KEY PLAN
2nd to 7th Floor

1 BHK - H

Suite Area: 675.76 SQFT | Balcony Area: 161.24 SQFT | Total Area: 837.00 SQFT

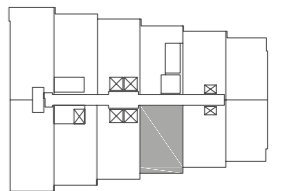
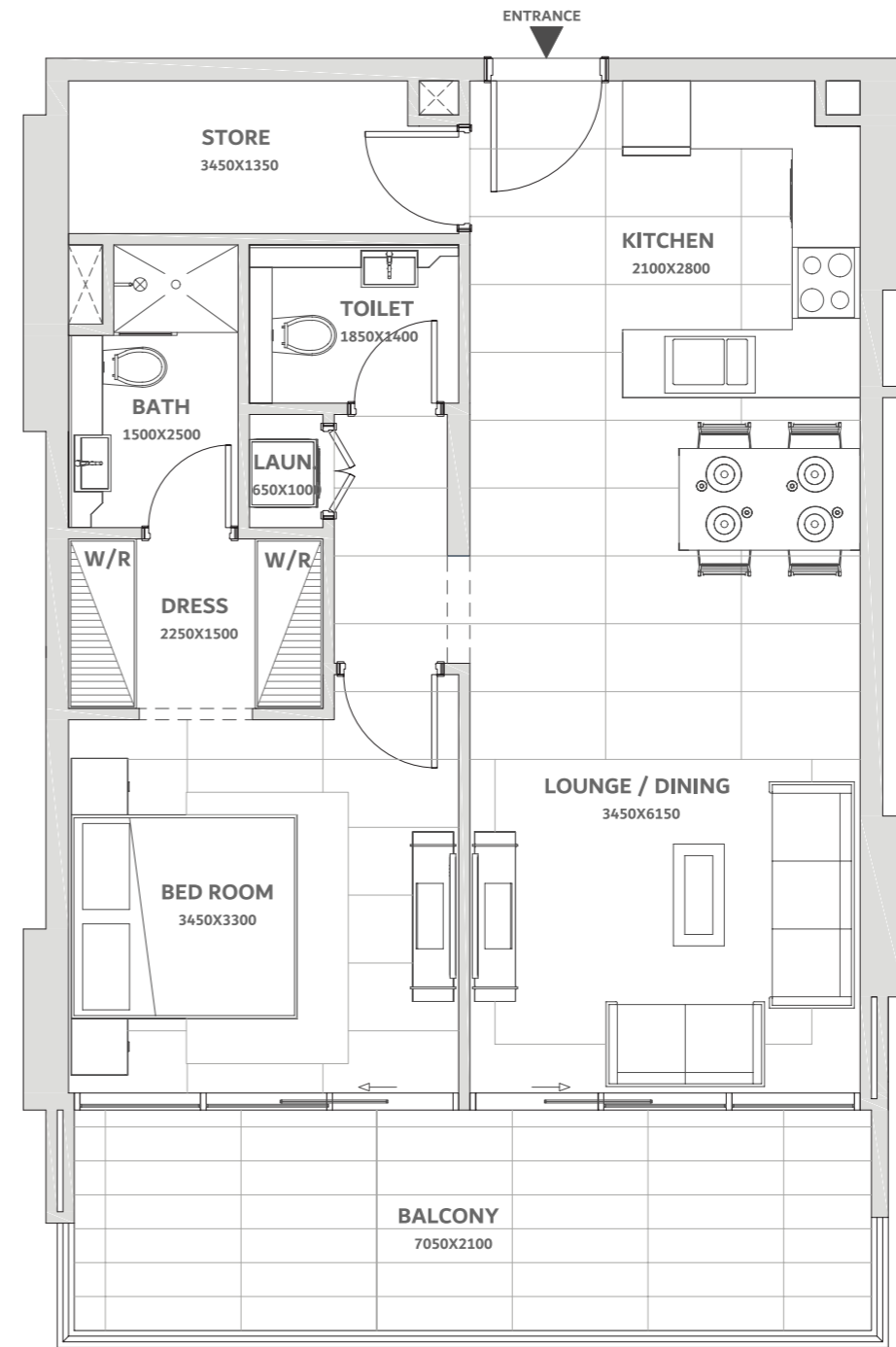


KEY PLAN
2nd to 12th Floor

* Images and layouts are for illustration purposes only. Actual specifications and dimensions may vary.

1 BHK - J

Suite Area: 709.13 SQFT | Balcony Area: 161.14 SQFT | Total Area: 870.26 SQFT

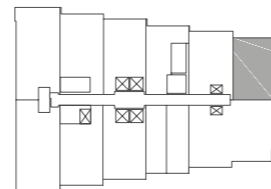


KEY PLAN
8th to 10th Floor

* Images and layouts are for illustration purposes only. Actual specifications and dimensions may vary.

1 BHK - K

Suite Area: 563.06 SQFT | Balcony Area: 564.67 SQFT | Total Area: 1127.73 SQFT



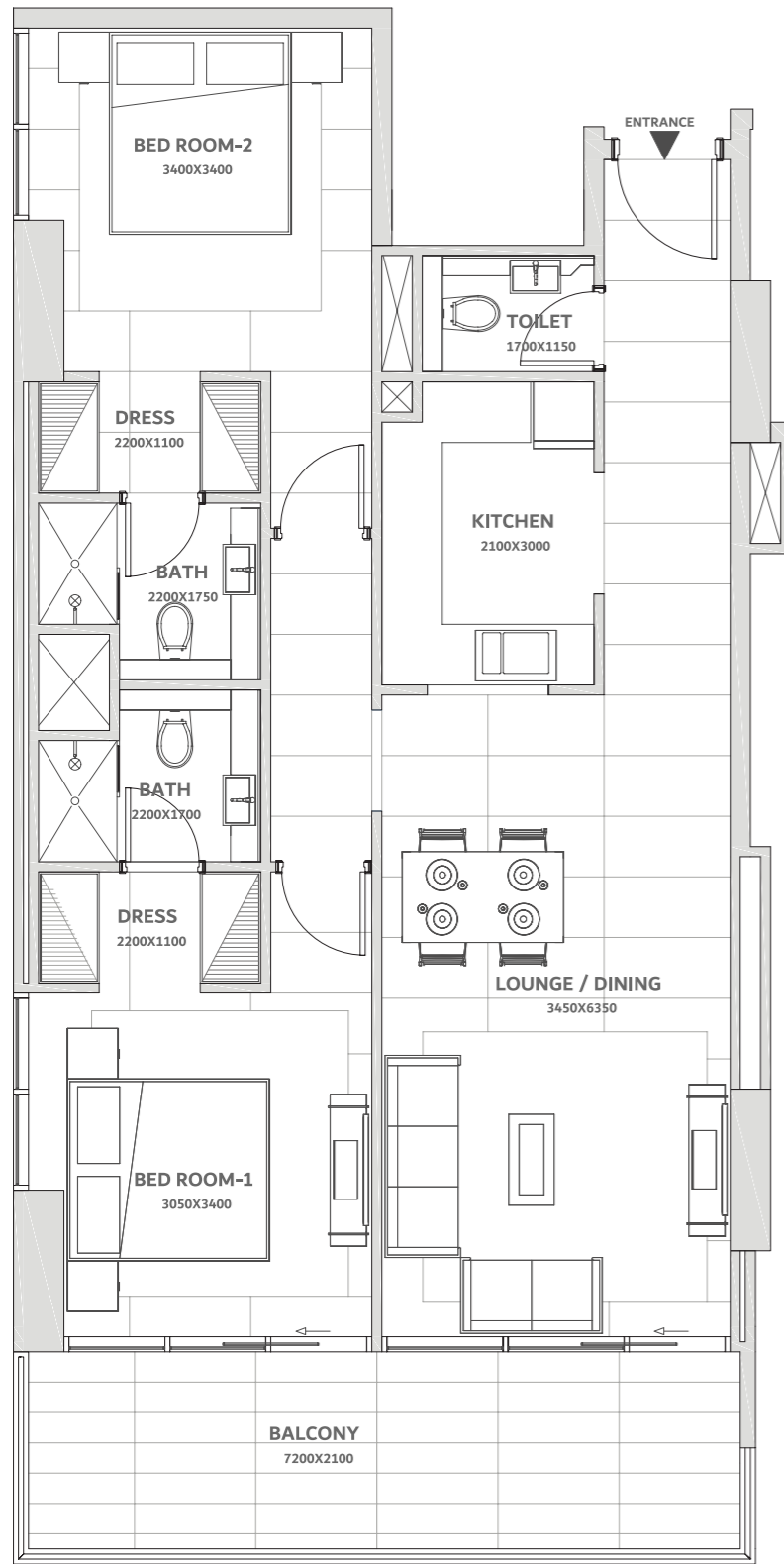
KEY PLAN
12th Floor

2 BEDROOMS



2 BHK - A

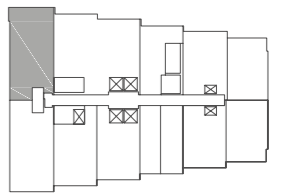
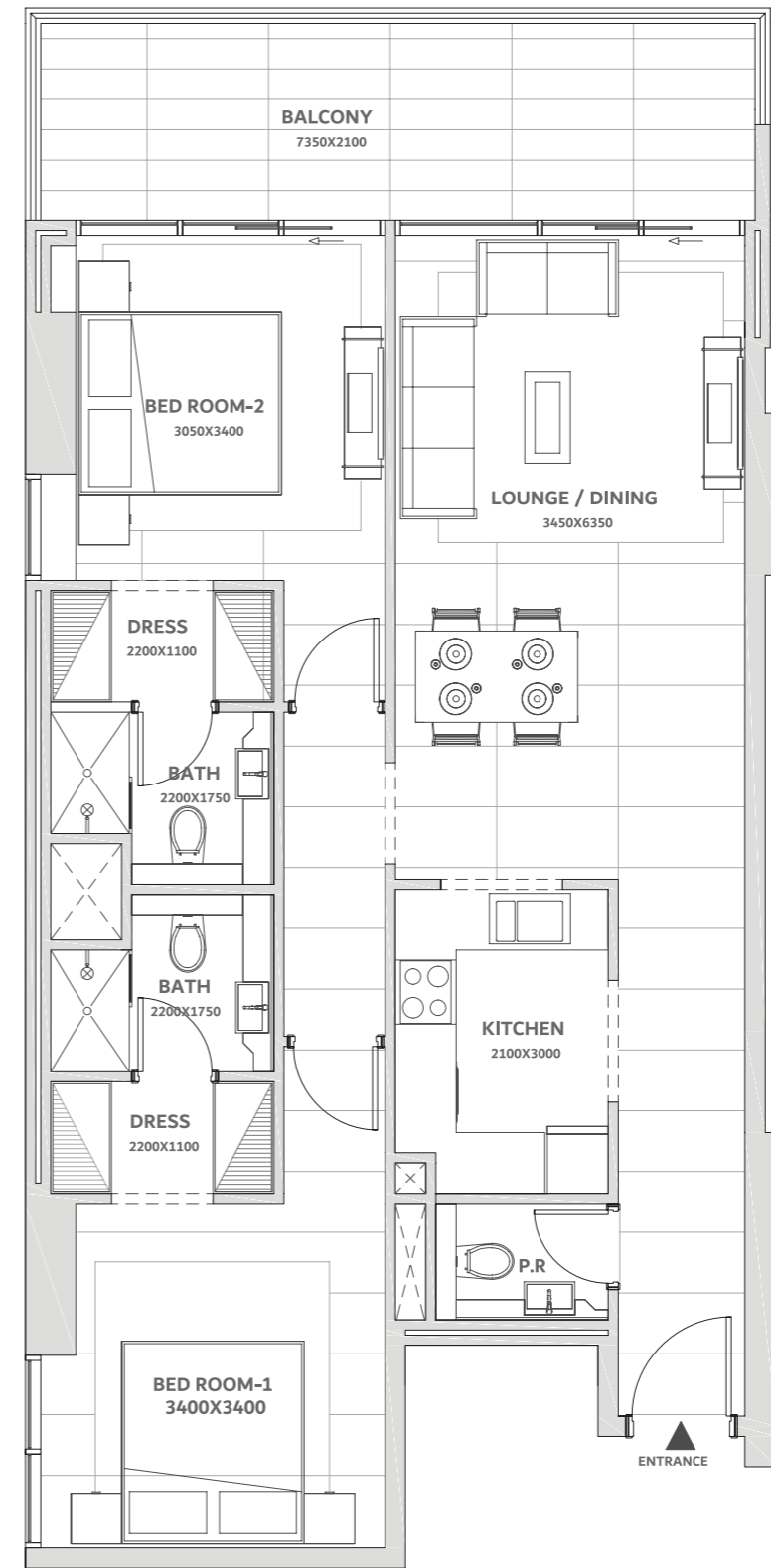
Suite Area: 914.07 SQFT | Balcony Area: 160.17 SQFT | Total Area: 1074.24 SQFT



KEY PLAN
2nd to 12th Floor

2 BHK - B

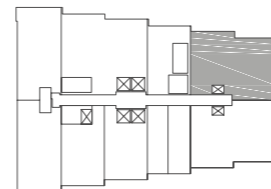
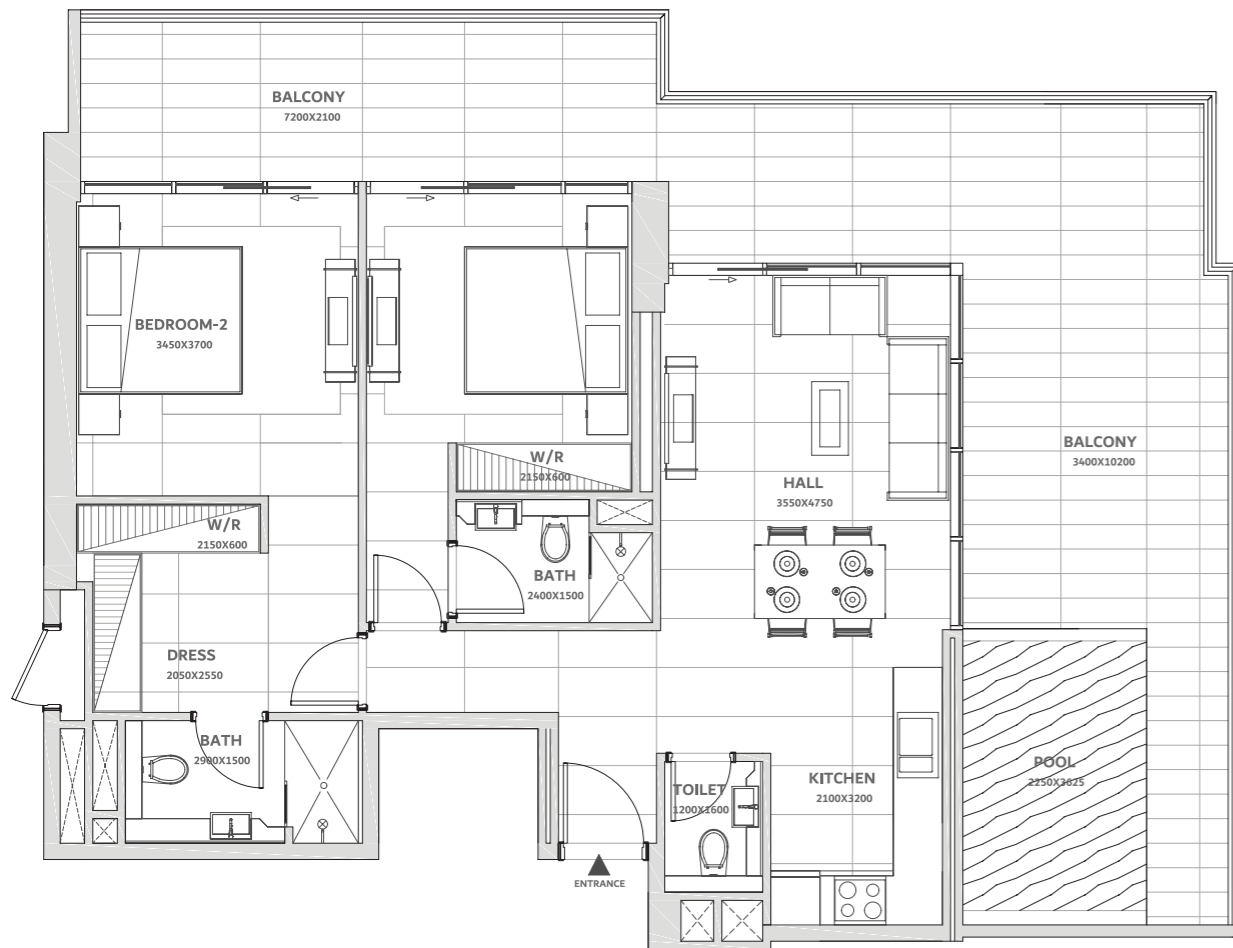
Suite Area: 915.69 SQFT | Balcony Area: 160.49 SQFT | Total Area: 1076.18 SQFT



KEY PLAN
2nd to 12th Floor

2 BHK + POOL

Suite Area: 895.23 SQFT | Balcony Area: 613.11 SQFT | Total Area: 1508.35 SQFT



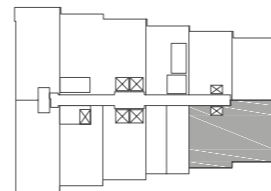
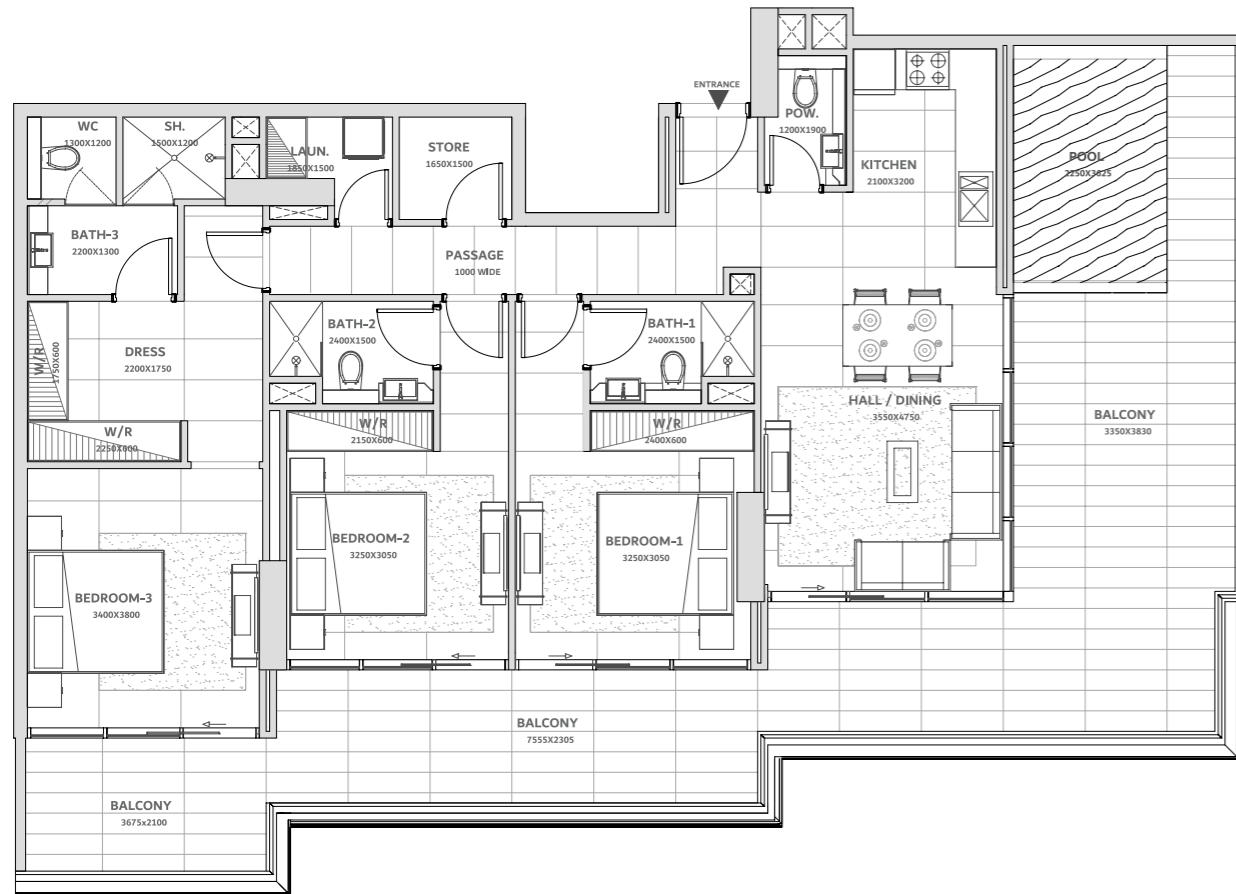
KEY PLAN
11th Floor

3 BEDROOMS



3 BHK + POOL - A

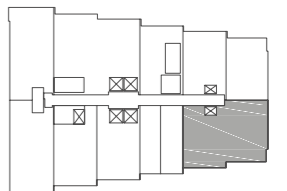
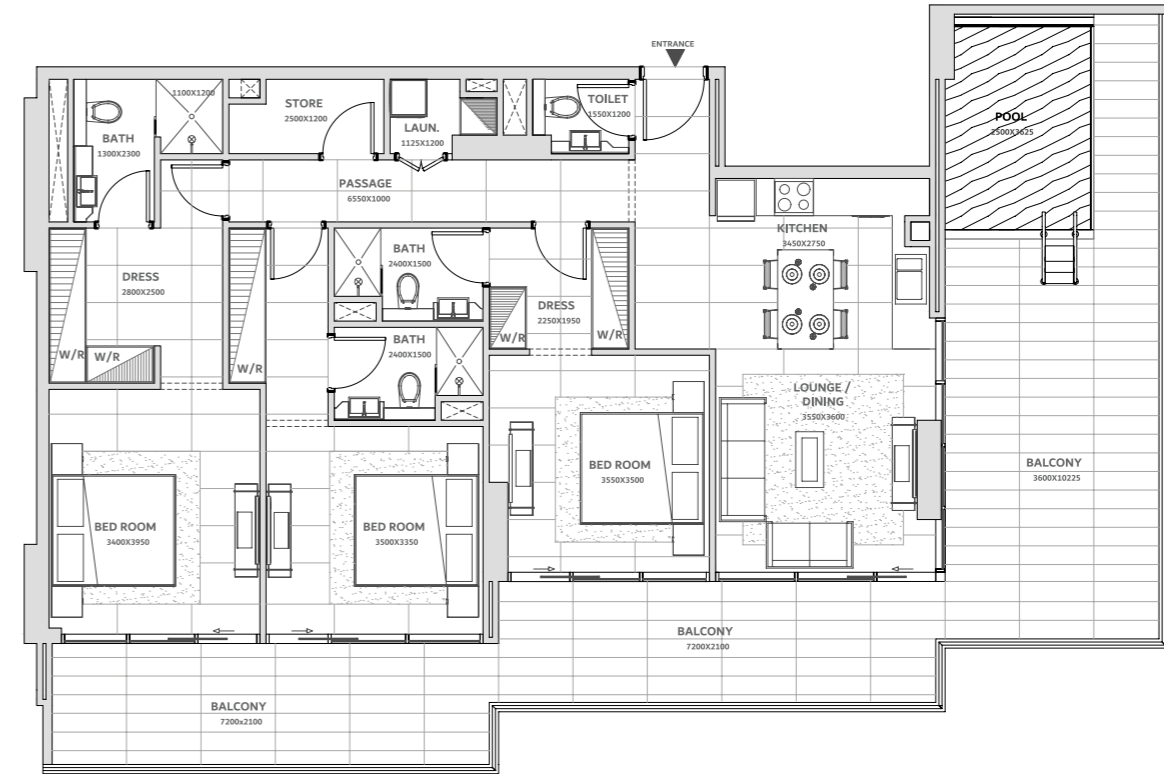
Suite Area: 1254.10 SQFT | Balcony Area: 692.44 SQFT | Total Area: 1946.55 SQFT



KEY PLAN
11th Floor

3 BHK + POOL - B

Suite Area: 1252.81 SQFT | Balcony Area: 722.58 SQFT | Total Area: 1975.39 SQFT



KEY PLAN
12th Floor