

SKY GARDENS

TOWER

By GJ Properties | www.skygardenstower.ae



Elevating Urban Living in Ajman

Ajman, a rising UAE destination, balances urban growth with serene living. In its dynamic Emirates City, Sky Gardens Tower emerges as a residential landmark, redefining urban living.

Developed by GJ Properties, it blends modern elegance, convenience, and sustainable design for discerning individuals and families.




Why Invest in Ajman

Ajman's appeal stems from its status as a Top 5 Safest City, strategic connectivity to all 7 Emirates, investor-friendly policies with Golden Visa eligibility, and diverse, affordable property options. Ongoing infrastructure development enhances its investment potential.

- Prime Location
- Future Rail Access
- Affordable Entry
- Strong ROI
- Low Utility Costs
- Residency Benefits
- Ajman Free Zone
- Proximity to Education
- Access to Key Attractions





Al Amerah. Your Day-to-Day, Covered

Located in Al Amerah, Sky Gardens Tower benefits from a setting that strikes a balance between calm residential living and practical connectivity. Set on the eastern edge of Ajman, the community offers smooth access to major highways and neighboring emirates.

With Sheikh Mohammed Bin Zayed Road right next door, getting to Dubai, Sharjah, Ras Al Khaimah or Umm Al Quwain is fast, simple, and stress-free—whether it's for work or a weekend break.





A Tower That Redefines

Sky Gardens Tower, developed by GJ Properties, offers modern elegance and convenience in Emirates City.

Designed for discerning investors and families, it features a strategic location, world-class amenities, and thoughtfully crafted 2-bedroom layouts with freehold ownership.





1. Hamidiya Park – 11 mins
2. Ajman City Centre - 18 mins
3. Ajman University – 18 mins
4. Sheikh Zayed Mosque, Ajman – 20 mins
5. Al Zorah Natural Reserve – 22 mins
6. Amina Hospital – 24 mins
7. Ajman beach – 26 mins
8. Ajman Heritage District – 26 mins
9. Ajman Marina – 26 mins
10. Sharjah International Airport – 27 mins
11. Dubai International Airport – 27 mins
12. Dubai Festival City Mall & Imagine Show – 30 mins
13. Ras Al Khor Dubai – 30 mins

Conveniently Connected

Sky Gardens Tower's prime location on Sheikh Mohammad Bin Zayed Road ensures seamless connectivity:

- Sharjah: 15 Min.
- Dubai: 30 Min.
- Easy access to Sheikh Mohammed Bin Zayed Road and Ajman Corniche
- Steps away from shopping centers, international schools, and healthcare facilities
- Close to leisure destinations like Ajman Marina and Al Zorah Nature Reserve

Live where convenience meets opportunity.

Sophisticated Comfort & Sustainable Luxury

Sky Gardens Tower features 738 fully furnished 2-bedroom residences (1405.81-2975.25 SQFT) with open-plan living, premium finishes, and abundant natural light.

The tower integrates sustainable features, including hanging gardens and a green facade, inspired by the Hanging Gardens of Babylon.



SKY GARDENS

TOWER



Amenities Above

Residents of Sky Gardens Tower indulge in a lifestyle of comfort and wellness with premium facilities designed to enhance everyday living.

On-Site

- State-of-the-art health club
- Resort-style swimming pool
- Landscaped gardens
- Children's play area
- 24/7 security
- Covered parking
- High-speed elevators
- Retail spaces

Nearby

- Markets and Shopping Centers
- Schools and Universities
- Parks
- Recreation Centers
- Restaurants
- Walking Areas
- Sitting Areas



Sky Gardens Tower: Facts & Features



Property Type: Residential Apartments



Total Number of Units: 738



Unit Mix: 2BHK



2BHK Unit Sizes: 1405.81 SQFT to 2975.25 SQFT



Prices Starting From: 663,615 AED



Completion Date: Q1 2028



Handover Date: Q1 2028



Payment Plan: 40/60 (2 years/4 years. Total 6 years)



Location: Sheikh Mohammad Bin Zayed Road







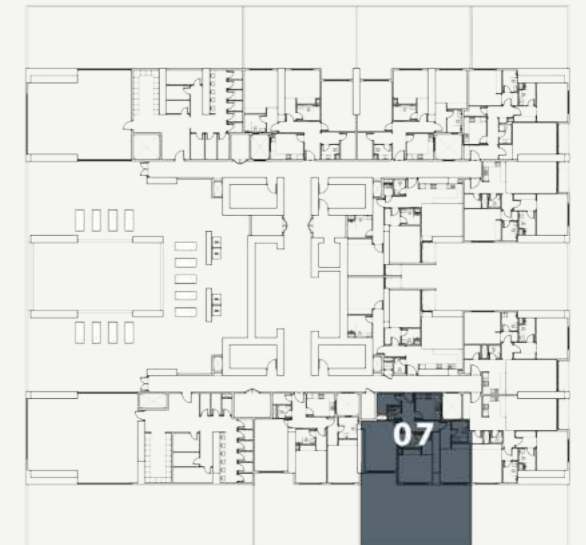


SKY GARDENS

TOWER



KEY PLAN



UNIT 107

2 BEDROOM

LEVEL 01

Internal Living Area	1076.61	sq.ft
Outdoor Living Area	979.62	sq.ft
Total Living Area	2056.23	sq.ft

DISCLAIMER:

All measurements are indicative and are for marketing purposes only. All efforts have been made to ensure their accuracy, however these layouts are subject to change at the discretion of the developer and should not be relied upon as final. The actual area may vary from the stated area and the developer reserves the right to make the revisions/alterations, at its absolute discretion, without any liability whatsoever.

DONT
DREAM
OF IT.
TRAIN
FOR IT.

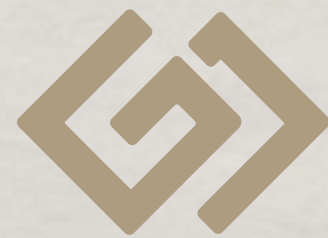


GJ Properties

The Name Shaping Ajman

GJ Properties has established itself as a premier luxury real estate developer in Ajman and the Northern Emirates, delivering high-quality projects that exemplify a commitment to excellence. With a mission to create living spaces that offer an exceptional quality of life, the brand seamlessly blends human-centric design with superior build quality.

By focusing on prime locations, innovative architecture, and responsive maintenance, each development is designed to exceed the aspirations of a discerning clientele. As the portfolio continues to expand, including ventures like the Biltmore Residences Sufouh in Dubai, GJ Properties remains dedicated to solidifying its position as Ajman's leading private developer.



جي جا العقارية
PROPERTIES



