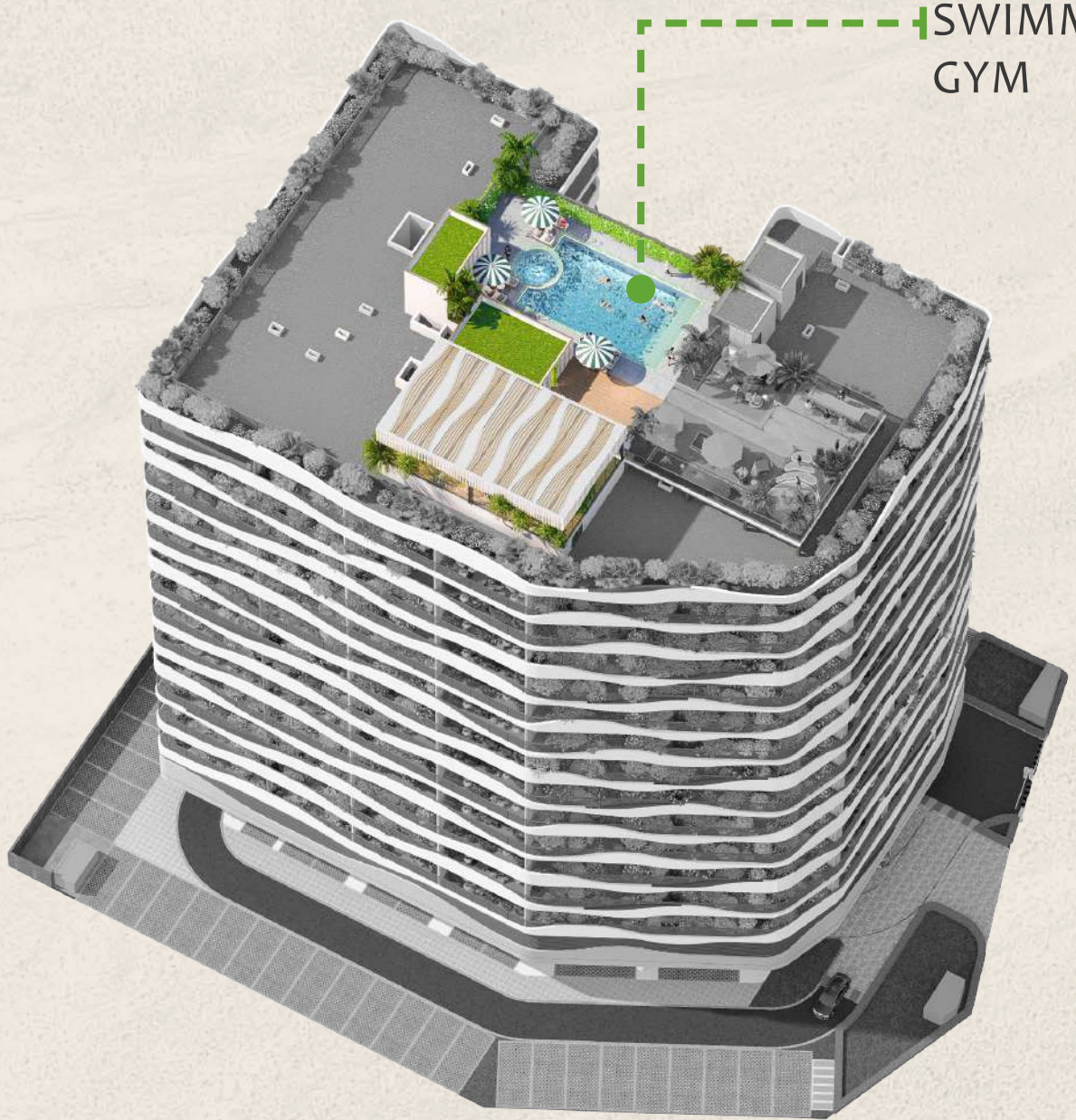


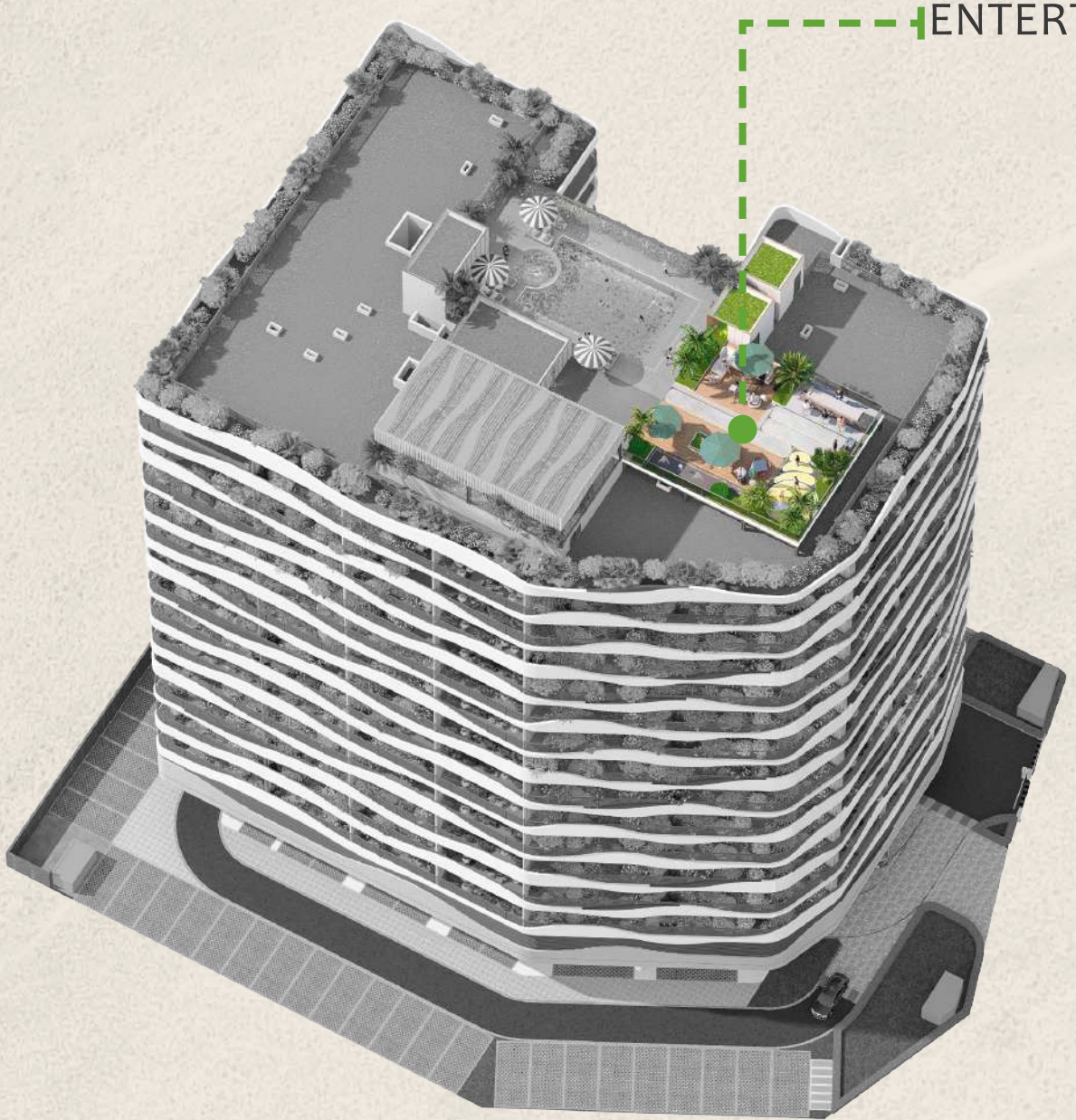
# GROUND AND ROOFTOP ZONING CONCEPT



SWIMMING POOL  
GYM

## SWIMMING POOL & GYM

Infinity pool, swim among the clouds. Enjoy the city's stunning views while staying active. Challenge yourself at great heights, where every drop of sweat is a sense of accomplishment



ENTERTAINMENT

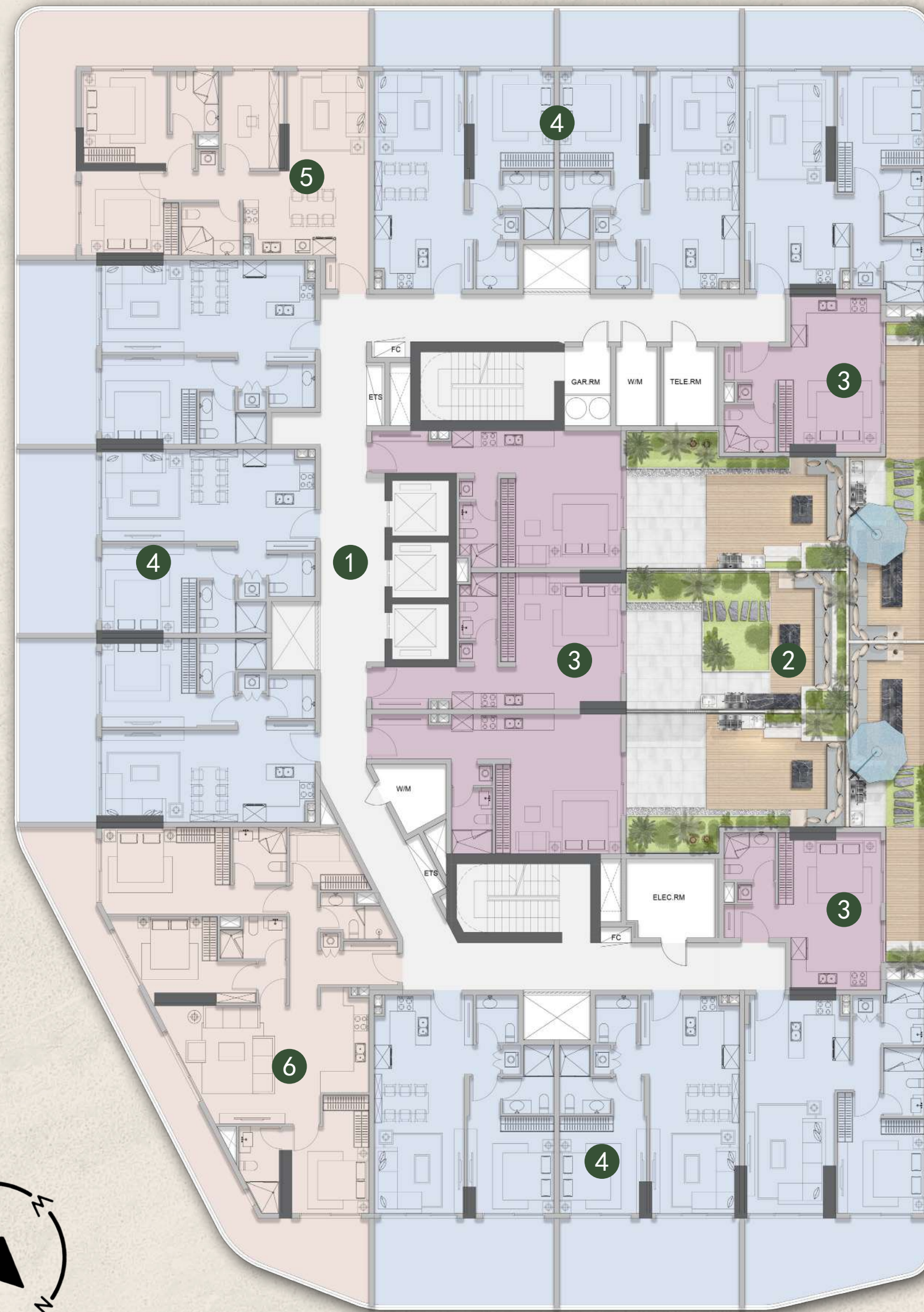
## ROOFTOP GARDEN

Rooftop garden, a natural oasis in the city; lounge seating, perfect for enjoying the afternoon sun; children's playground, a joyful world for kids; BBQ parties, where food and fun are shared

# PRIVATE SPACE

## ENJOY FAMILY TIME

The private garden is your exclusive sanctuary, where every moment with family becomes a cherished memory, quietly elevating the quality of life. Sit together, basking in the sunlight, enjoying a leisurely afternoon. The sun pours down, and every inch of land is blessed by nature. Together with your loved ones, embrace the warmth of the sky.



# FOREST CITY TOWER II

- 1 Elevator lobby
- 2 Private garden
- 3 Studio
- 4 1BHK
- 5 2BHK
- 6 3BHK

FIRST-FLOOR LAYOUT

# Roof floor plan



- 1 Gym
- 2 pool
- 3 Lounge seating
- 4 Fountain
- 5 Tea lounge
- 6 Kids' zone
- 7 BBQ area

## GREEN SHADOWS SOARING

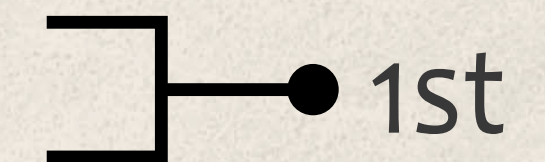
### Classy vibes in the clouds

In this rooftop lounge, you can fully enjoy the tranquility of greenery and the serenity of time. It's a peaceful oasis in the city, offering a retreat from the hustle and immersing you in nature's embrace. A pot of fine tea, a good book, and a moment of calm await you here.

# GROUND AND ROOFTOP ZONING CONCEPT

## FLOOR PLAN - 1st LEVEL

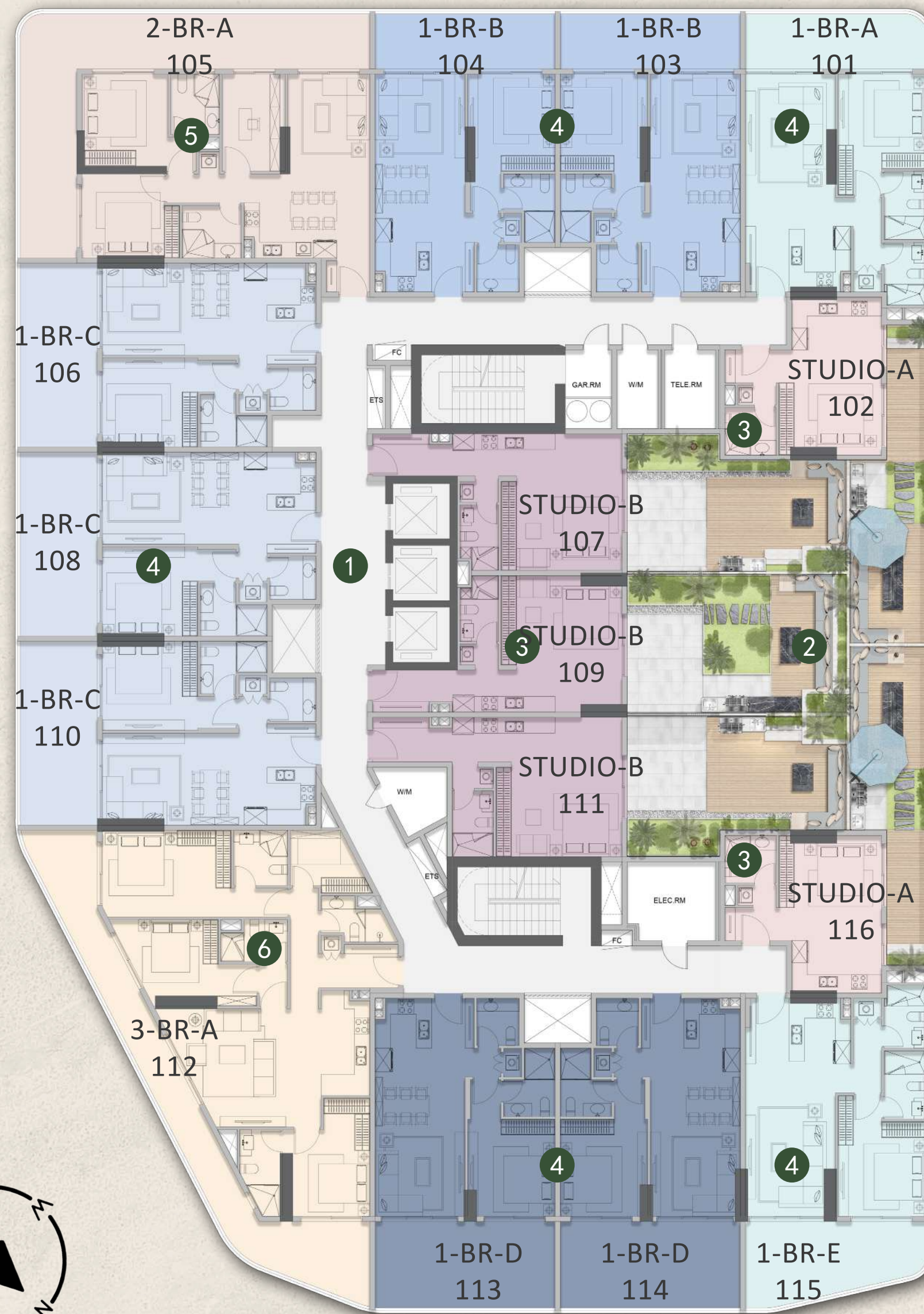
NO.	Type	Suite	Balcony	Total
101	1-BR-A	658.43sq.ft	176.53sq.ft	834.96sq.ft
102	STUDIO-B	368.65sq.ft	341.43sq.ft	700.08sq.ft
103	1-BR-B	623.02sq.ft	177.39sq.ft	800.40sq.ft
104	1-BR-B	623.02sq.ft	177.39sq.ft	800.40sq.ft
105	2-BR-A	898.25sq.ft	520.11sq.ft	1418.36sq.ft
106	1-BR-C	620.32sq.ft	247.03sq.ft	867.36sq.ft
107	STUDIO-A	442.93sq.ft	457.14sq.ft	900.08sq.ft
108	1-BR-C	625.71sq.ft	247.25sq.ft	872.95sq.ft
109	STUDIO-A	433.57sq.ft	506.76sq.ft	940.34sq.ft
110	1-BR-C	618.92sq.ft	247.03sq.ft	865.96sq.ft
111	STYDIO-A	470.92sq.ft	466.72sq.ft	937.64sq.ft
112	3-BR-A	1306.63sq.ft	458.97sq.ft	1765.60sq.ft
113	1-BR-D	623.02sq.ft	270.39sq.ft	893.40sq.ft
114	1-BR-D	619.89sq.ft	270.39sq.ft	890.28sq.ft
115	1-BR-E	661.55sq.ft	224.75sq.ft	886.30sq.ft
116	STUDIO-B	358.65sq.ft	341.43sq.ft	700.08sq.ft



# PRIVATE SPACE

## ENJOY FAMILY TIME

Meticulously designed studios, one-bedroom, and two-bedroom apartments are based on a lifestyle inspired by the natural environment, with design guiding the way. The morning and evening sunlight streams through spacious windows, illuminating the natural textures, colors, and materials, bringing a light warmth. Light dances through the rooms, and a gentle breeze caresses the curtains, making every day at home feel poetic.



# FOREST CITY TOWER II

- 1 Elevator lobby
- 2 Private garden
- 3 Studio
- 4 1BHK
- 5 2BHK
- 6 3BHK

FIRST-FLOOR LAYOUT

Disclaimer:(1) All materials, dimensions and drawings are approximate and for illustration purposes. (2) Information is subject to change without notice (3) Actual suite area may vary from the stated area. (4) Suite & the balcony area may vary from floor to floor.(5) Drawings not to scale.(6) The developer reserves the right to make revisions / alterations without any liability whatsoever.(7) Apartments are sold as unfurnished apartments, without furniture, furnishings, etc.

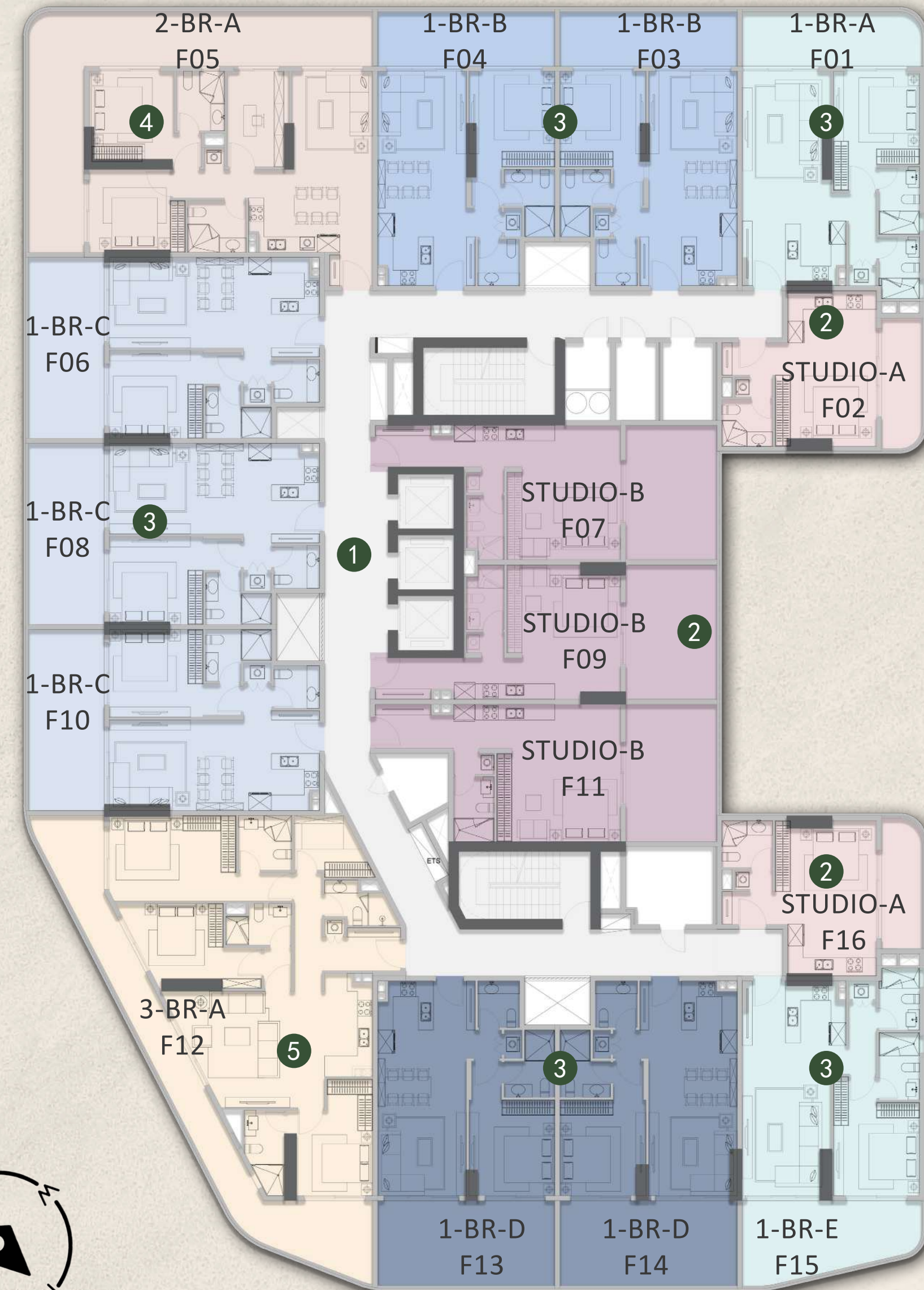
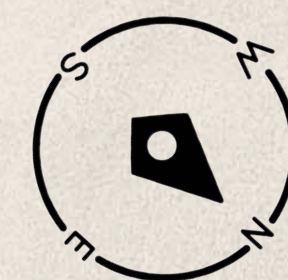
# FOREST CITY TOWER II

- 1 Elevator lobby
- 2 Studio
- 3 1BHK
- 4 2BHK
- 5 3BHK

## PRIVATE SPACE

### ENJOY FAMILY TIME

Meticulously designed studios, one-bedroom, and two-bedroom apartments are based on a lifestyle inspired by the natural environment, with design guiding the way. The morning and evening sunlight streams through spacious windows, illuminating the natural textures, colors, and materials, bringing a light warmth. Light dances through the rooms, and a gentle breeze caresses the curtains, making every day at home feel poetic.



FIRST-FLOOR LAYOUT

Disclaimer:(1) All materials, dimensions and drawings are approximate and for illustration purposes. (2) Information is subject to change without notice (3) Actual suite area may vary from the stated area. (4) Suite & the balcony area may vary from floor to floor.(5) Drawings not to scale.(6) The developer reserves the right to make revisions / alterations without any liability whatsoever.(7) Apartments are sold as unfurnished apartments, without furniture, furnishings, etc.

# GROUND AND ROOFTOP ZONING CONCEPT



● 2nd-6th

## FLOOR PLAN - 2nd- 6th LEVEL

NO.	Type	Suite	Balcony	Total
F01	1-BR-A	658.43sq.ft	176.53sq.ft	834.96sq.ft
F02	STUDIO-A	358.65sq.ft	97.95sq.ft	456.61sq.ft
F03	1-BR-B	623.02sq.ft	177.39sq.ft	800.40sq.ft
F04	1-BR-B	623.02sq.ft	177.39sq.ft	800.40sq.ft
F05	2-BR-A	898.25sq.ft	520.11sq.ft	1418.36sq.ft
F06	1-BR-C	620.32sq.ft	247.03sq.ft	867.36sq.ft
F07	STUDIO-B	442.93sq.ft	219.91sq.ft	662.84sq.ft
F08	1-BR-C	625.71sq.ft	247.25sq.ft	872.95sq.ft
F09	STUDIO-B	433.57sq.ft	219.15sq.ft	652.72sq.ft
F10	1-BR-C	618.92sq.ft	247.03sq.ft	865.96sq.ft
F11	STYDIO-B	470.92sq.ft	224.21sq.ft	695.13sq.ft
F12	3-BR-A	1306.63sq.ft	458.97sq.ft	1765.60sq.ft
F13	1-BR-D	623.02sq.ft	270.39sq.ft	893.40sq.ft
F14	1-BR-D	619.89sq.ft	270.39sq.ft	890.28sq.ft
F15	1-BR-D	661.55sq.ft	224.75sq.ft	886.30sq.ft
F16	STUDIO-A	358.65sq.ft	97.95sq.ft	456.61sq.ft

# GROUND AND ROOFTOP ZONING CONCEPT

## FLOOR PLAN - 7th- 13th LEVEL

NO.	Type	Suite	Balcony	Total
F01	2-BR-B	1073.27sq.ft	274.48sq.ft	1347.75sq.ft
F02	1-BR-B	623.02sq.ft	177.39sq.ft	800.40sq.ft
F03	1-BR-B	623.02sq.ft	177.39sq.ft	800.40sq.ft
F04	2-BR-A	898.25sq.ft	520.11sq.ft	1418.36sq.ft
F05	1-BR-C	620.32sq.ft	247.03sq.ft	867.36sq.ft
F06	STUDIO-A	442.93sq.ft	219.91sq.ft	662.84sq.ft
F07	1-BR-C	625.71sq.ft	247.25sq.ft	872.95sq.ft
F08	STUDIO-A	433.57sq.ft	219.15sq.ft	652.72sq.ft
F09	STUDIO-A	470.92sq.ft	224.21sq.ft	695.13sq.ft
F10	1-BR-C	618.92sq.ft	247.03sq.ft	865.96sq.ft
F11	3-BR-A	1306.63sq.ft	458.97sq.ft	1765.60sq.ft
F12	1-BR-D	623.02sq.ft	270.39sq.ft	893.40sq.ft
F13	1-BR-D	619.89sq.ft	270.39sq.ft	890.28sq.ft
F14	2-BR-B	1076.39sq.ft	322.70sq.ft	1399.09sq.ft

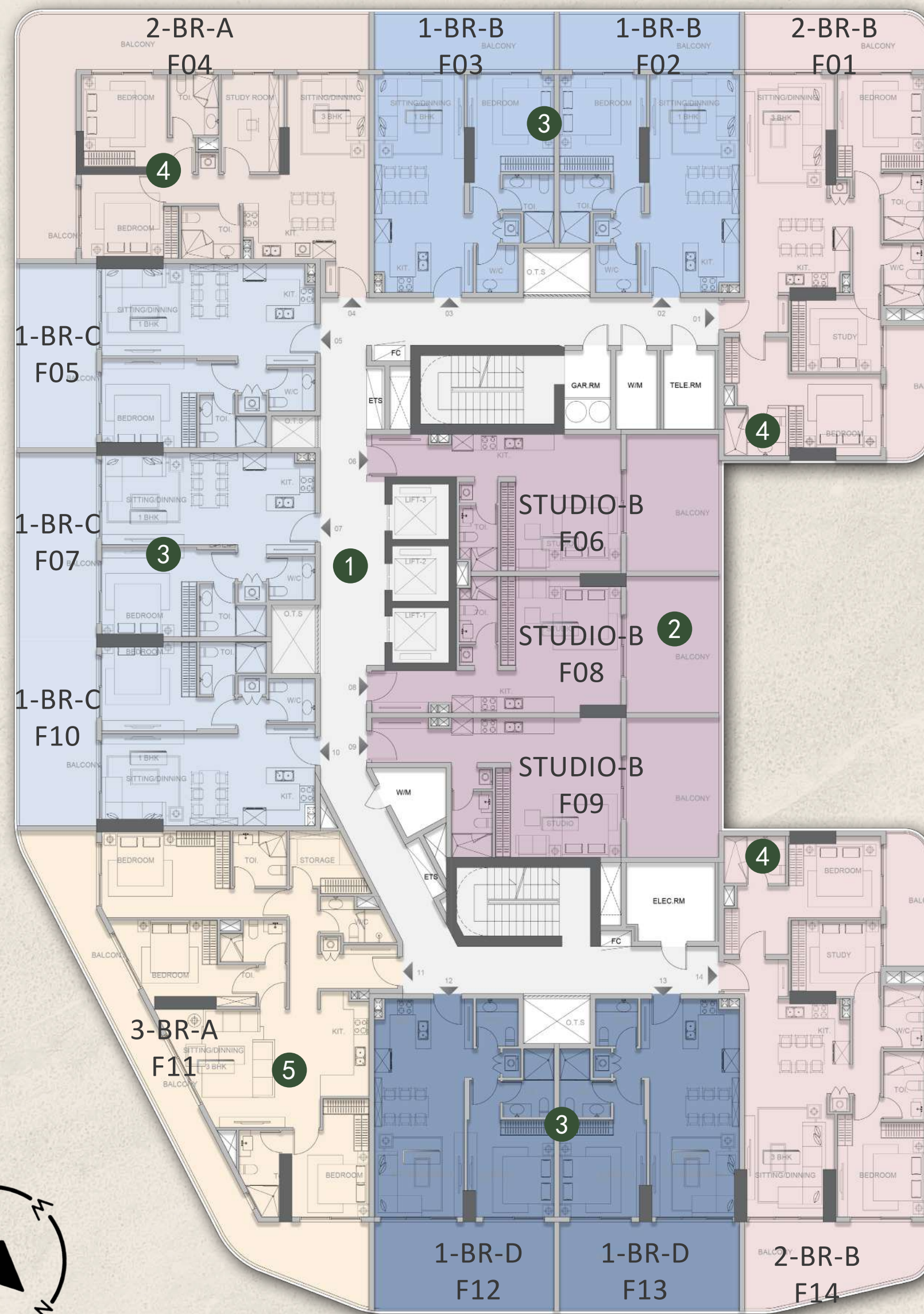


7th-13th

# PRIVATE SPACE

## ENJOY FAMILY TIME

The private garden is your exclusive sanctuary, where every moment with family becomes a cherished memory, quietly elevating the quality of life. Sit together, basking in the sunlight, enjoying a leisurely afternoon. The sun pours down, and every inch of land is blessed by nature. Together with your loved ones, embrace the warmth of the sky.



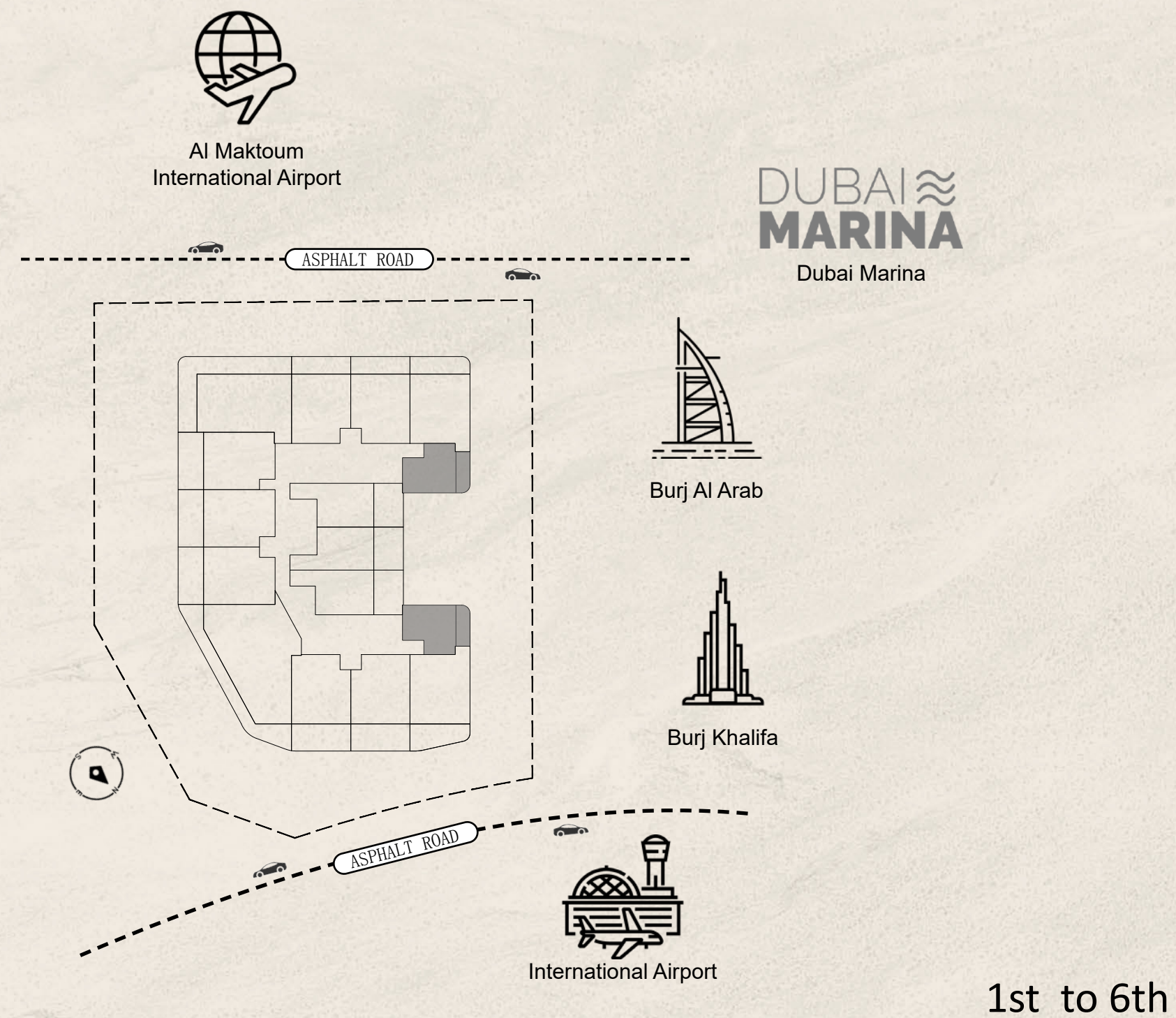
# FOREST CITY TOWER II

- 1 Elevator lobby
- 2 Studio
- 3 1BHK
- 4 2BHK
- 5 3BHK

Disclaimer:(1) All materials, dimensions and drawings are approximate and for illustration purposes. (2) Information is subject to change without notice (3) Actual suite area may vary from the stated area. (4) Suite & the balcony area may vary from floor to floor.(5) Drawings not to scale.(6) The developer reserves the right to make revisions / alterations without any liability whatsoever.(7) Apartments are sold as unfurnished apartments, without furniture, furnishings, etc.

FIRST-FLOOR LAYOUT

STUDIO (A)

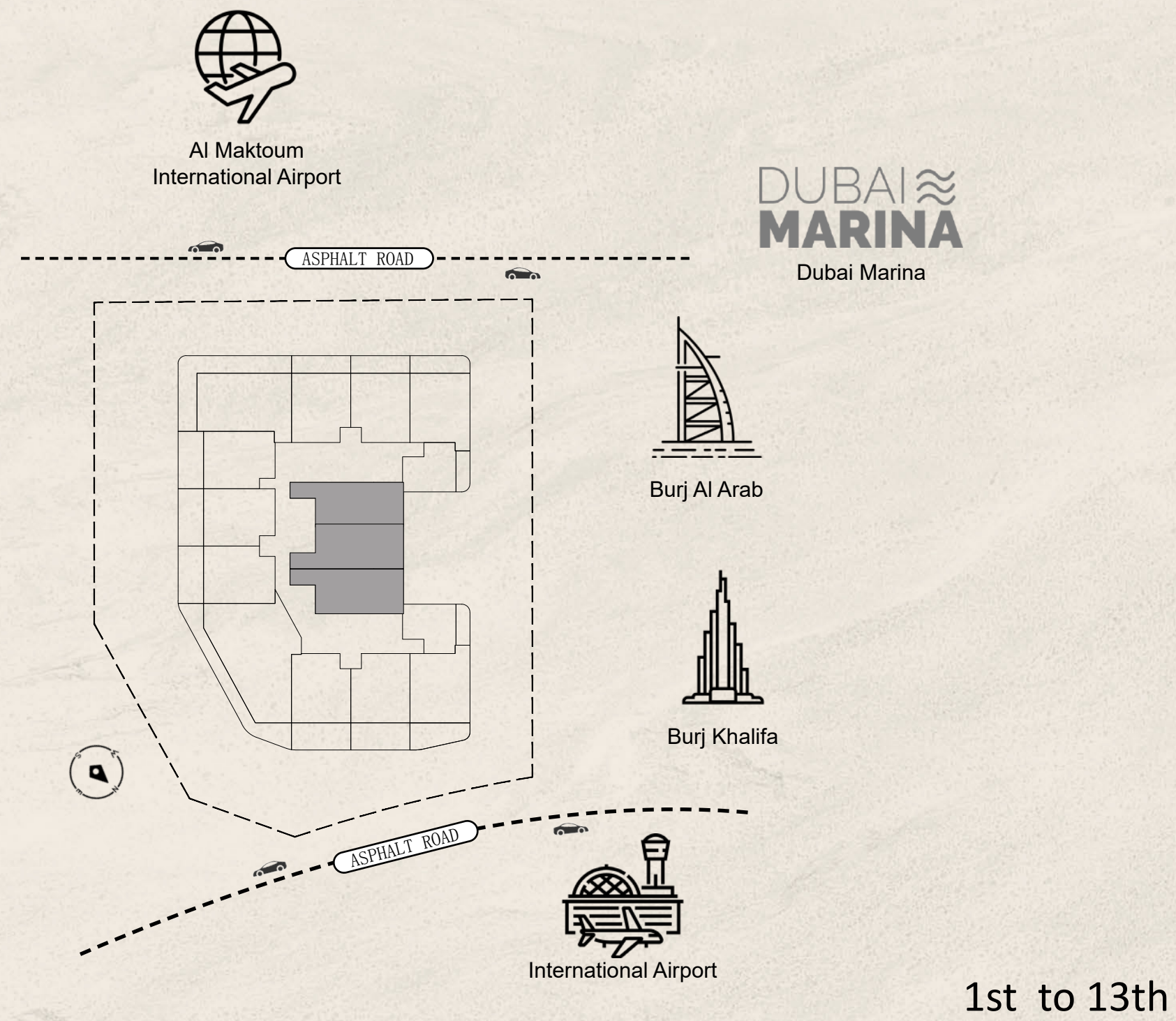


STUDIO (A)

AVERAGE TOTAL AREA :456.61 sqft / 42.42 sqm to 700.08 sqft /65.04 sqm



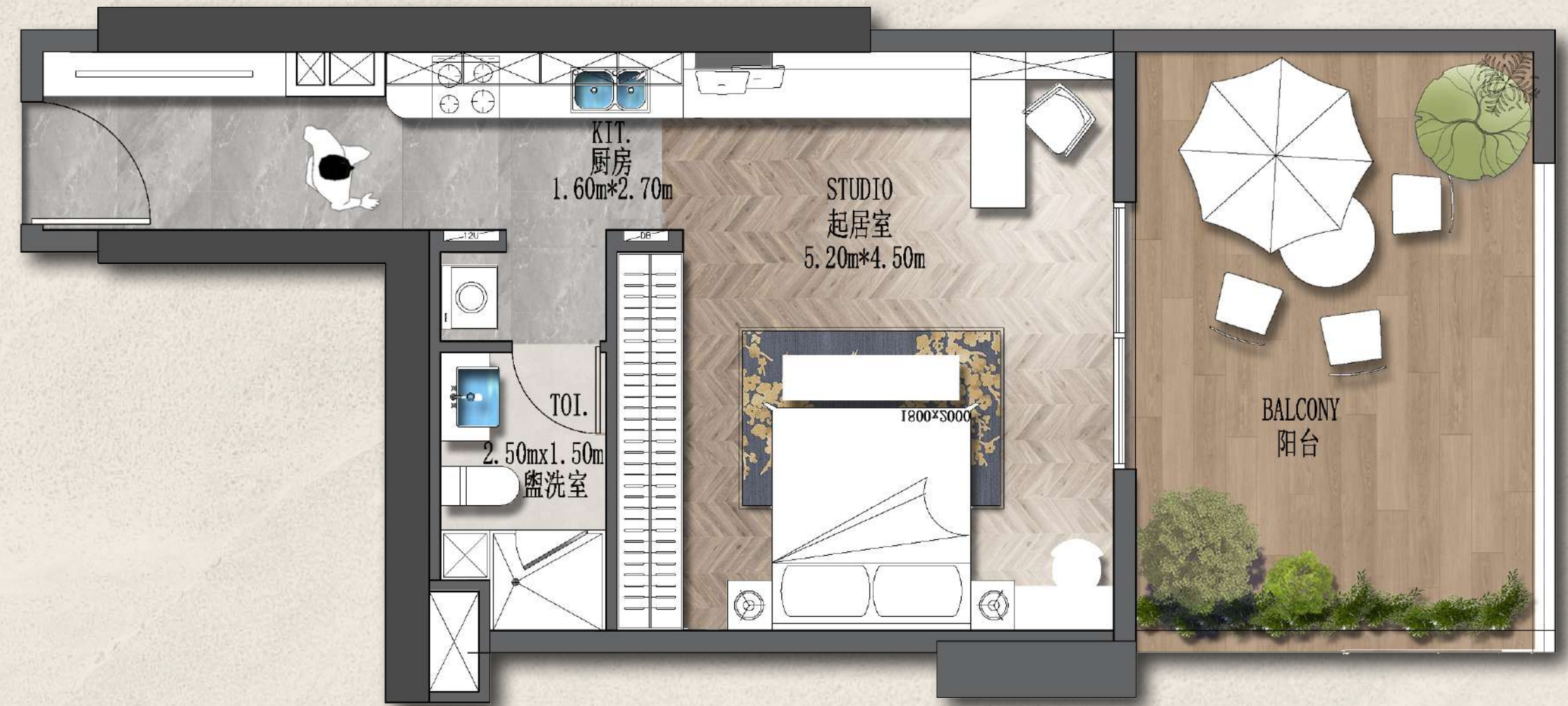
# STUDIO (B)



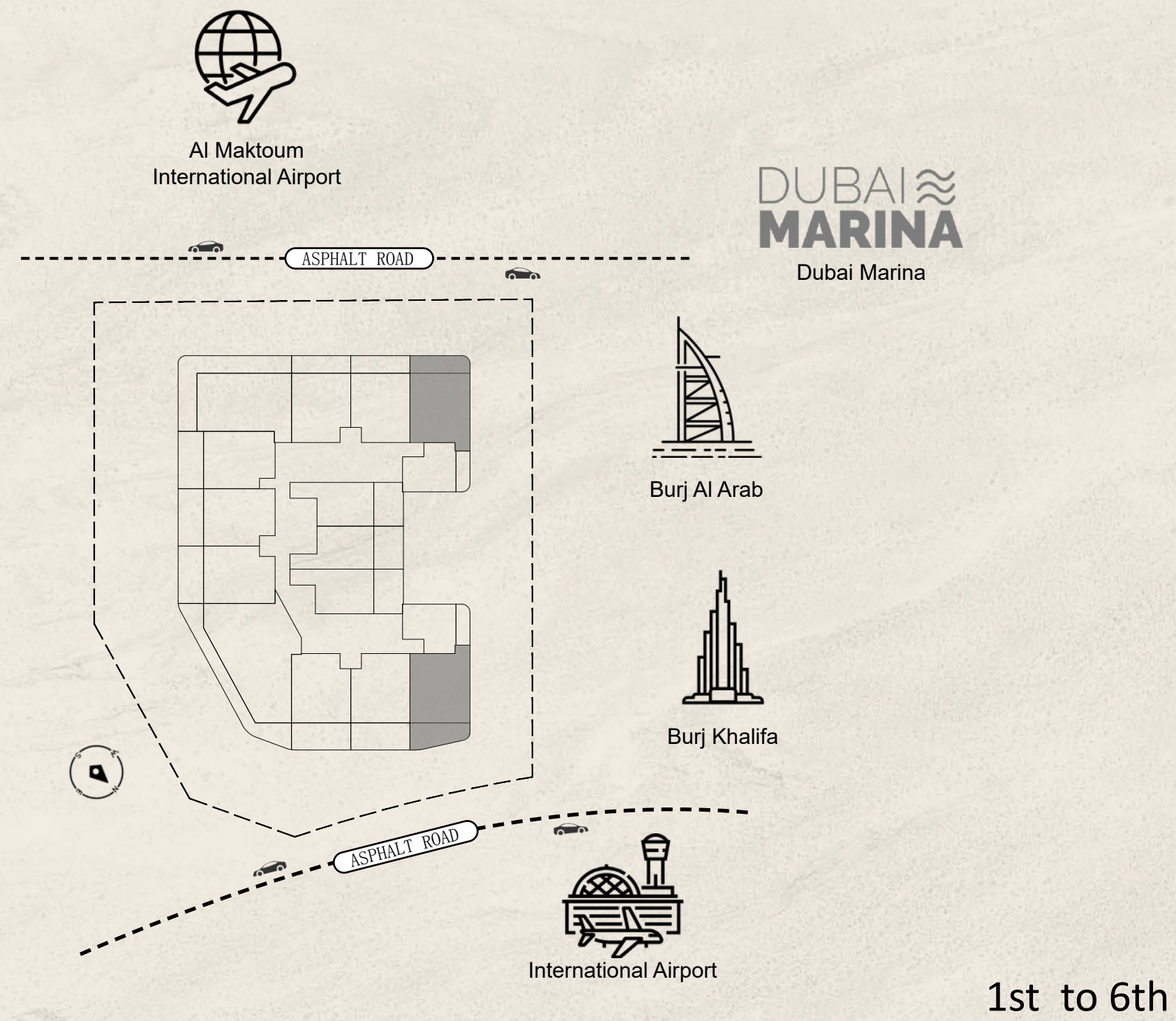
Disclaimer: Images are for display only; actual conditions may vary

# STUDIO (B)

AVERAGE TOTAL AREA :652.72 sqft / 60.64 sqm to 940.4 sqft / 87.36 sqm



1HBK (A)



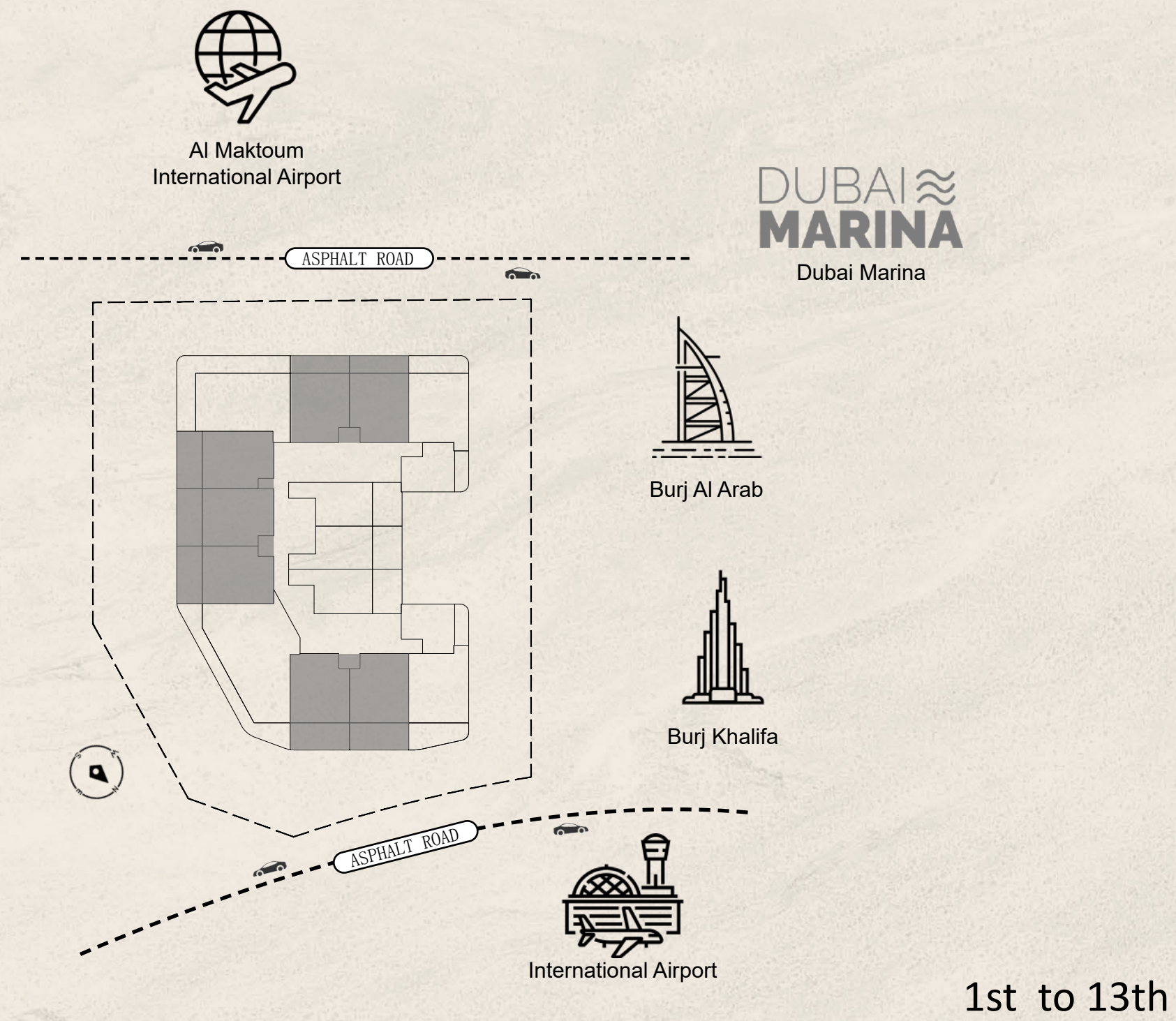
Disclaimer: Images are for display only; actual conditions may vary

1BHK (A)

AVERAGE TOTAL AREA :834.96 sqft / 77.57 sqm to 886.30 sqft / 82.34 sqm

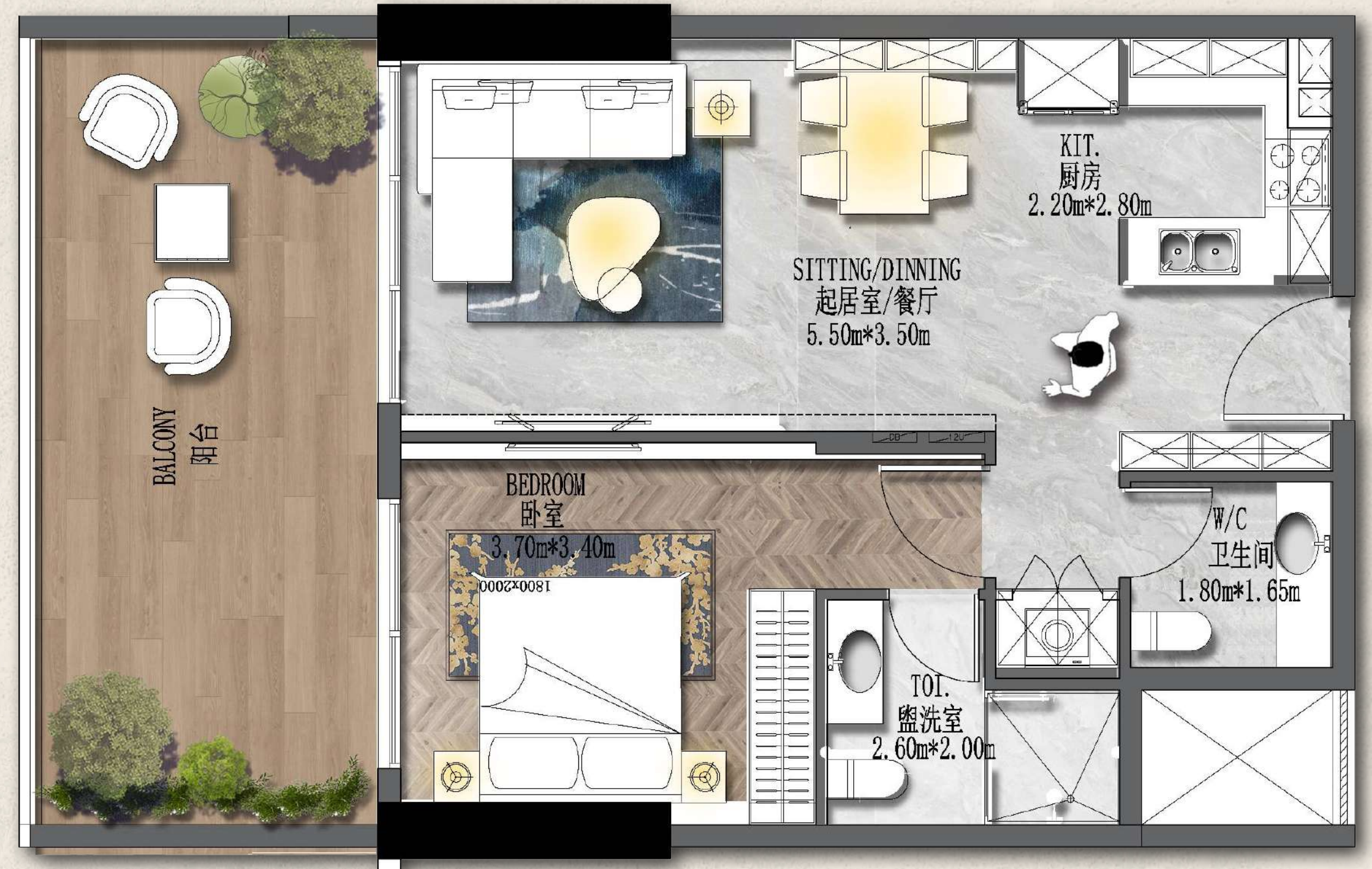


1BHK (C)

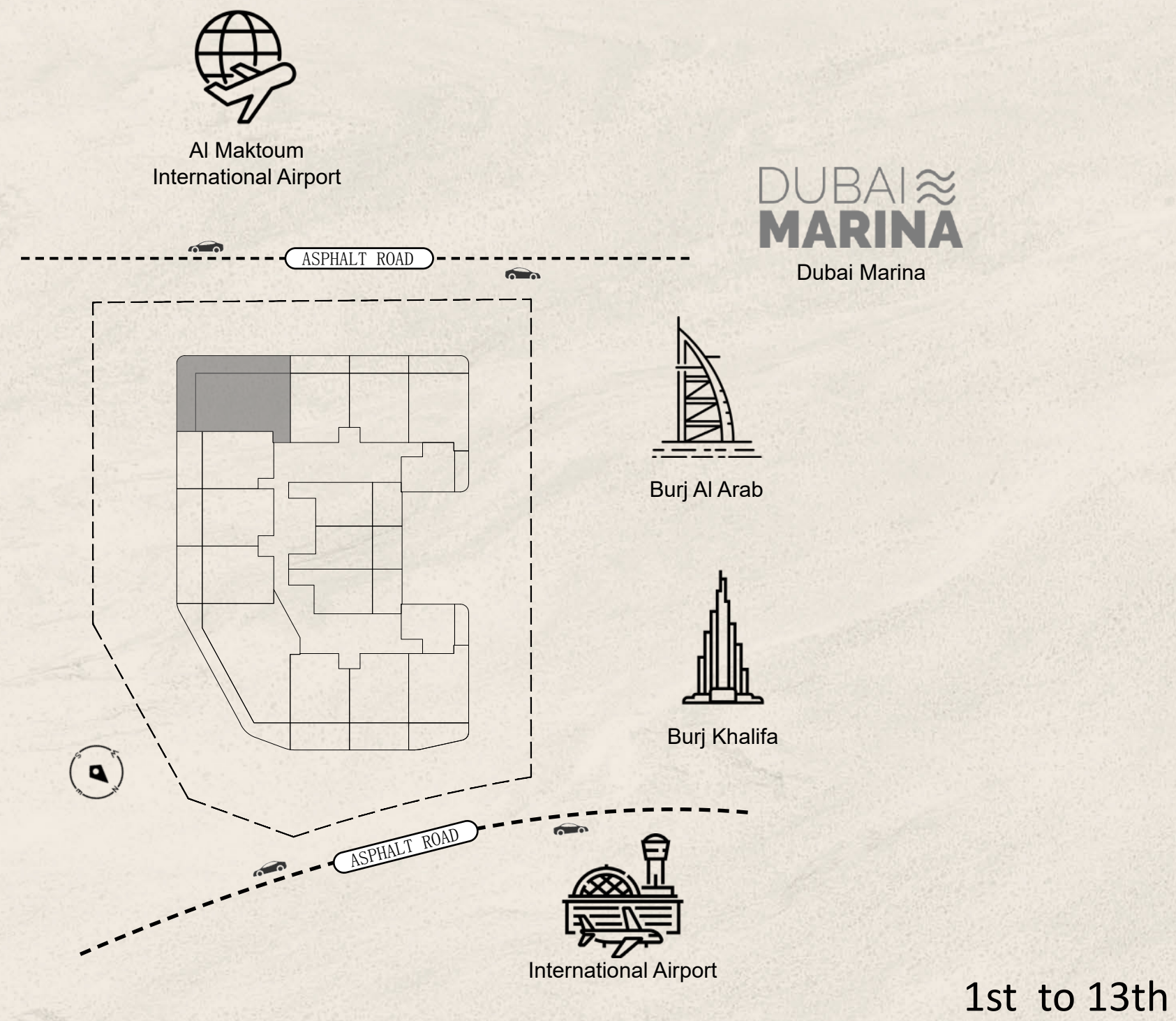


1BHK (C)

AVERAGE TOTAL AREA :800.40 sqft / 74.36 sqm to 872.95 sqft / 81.10 sqm



2HBK (A)



1st to 13th

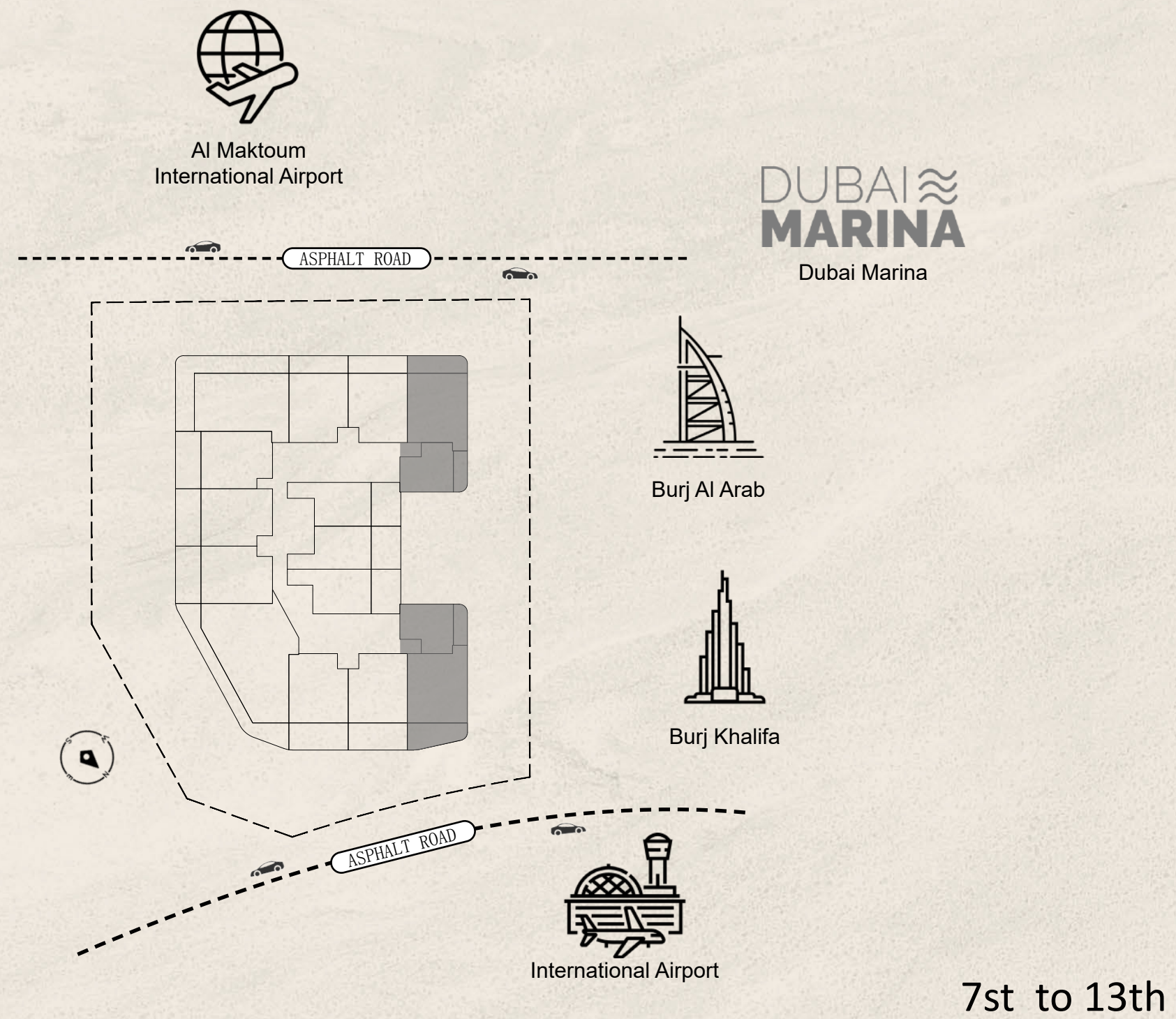
Disclaimer: Images are for display only; actual conditions may vary

2BHK (A)

AVERAGE TOTAL AREA :1423.74 sqft / 132.27 sqm



# 2HBK (B)



Disclaimer: Images are for display only; actual conditions may vary

# 2BHK (B)

AVERAGE TOTAL AREA :1351.19 sqft / 125.53 sqm to 1402.54 sqft / 130.30 sqm



### 2BHK (B-1)

AVERAGE TOTAL AREA :316.89 sqft / 29.44 sqm to 317.10sqft / 29.46 sqm

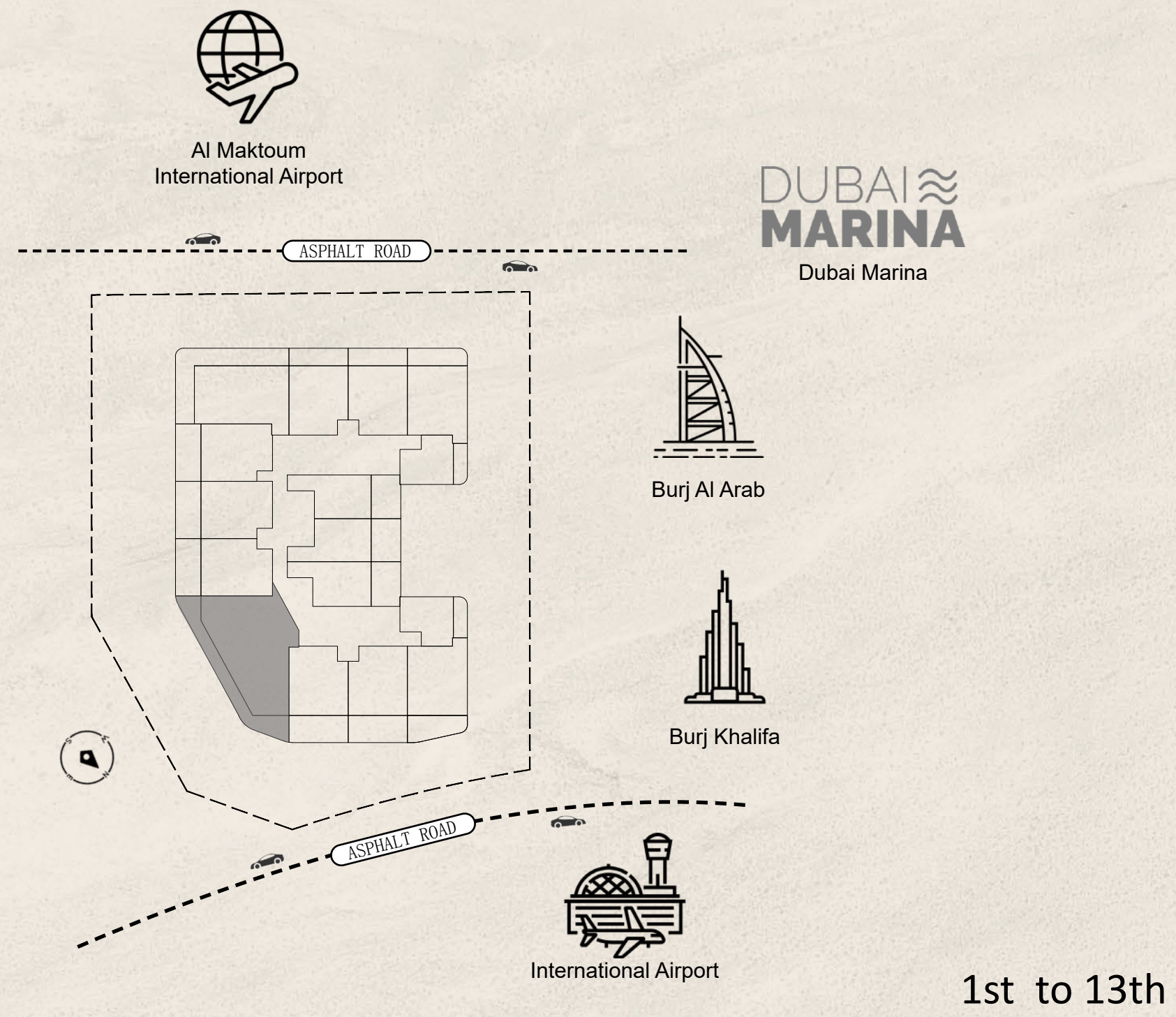


### 2 BHK (B-2)

AVERAGE TOTAL AREA :1030.64 sqft / 95.75 sqm to 1081.88 sqft / 100.51 sqm



# 3HBK (A)



Disclaimer: Images are for display only; actual conditions may vary

# 3BHK (A)

AVERAGE TOTAL AREA :1770.45sqft / 164.48 sqm



### 3BHK (C)

AVERAGE TOTAL AREA :595.03sqft / 55.28 sqm



### 3BHK (B)

AVERAGE TOTAL AREA :1175.42sqft / 109.20 sqm

