

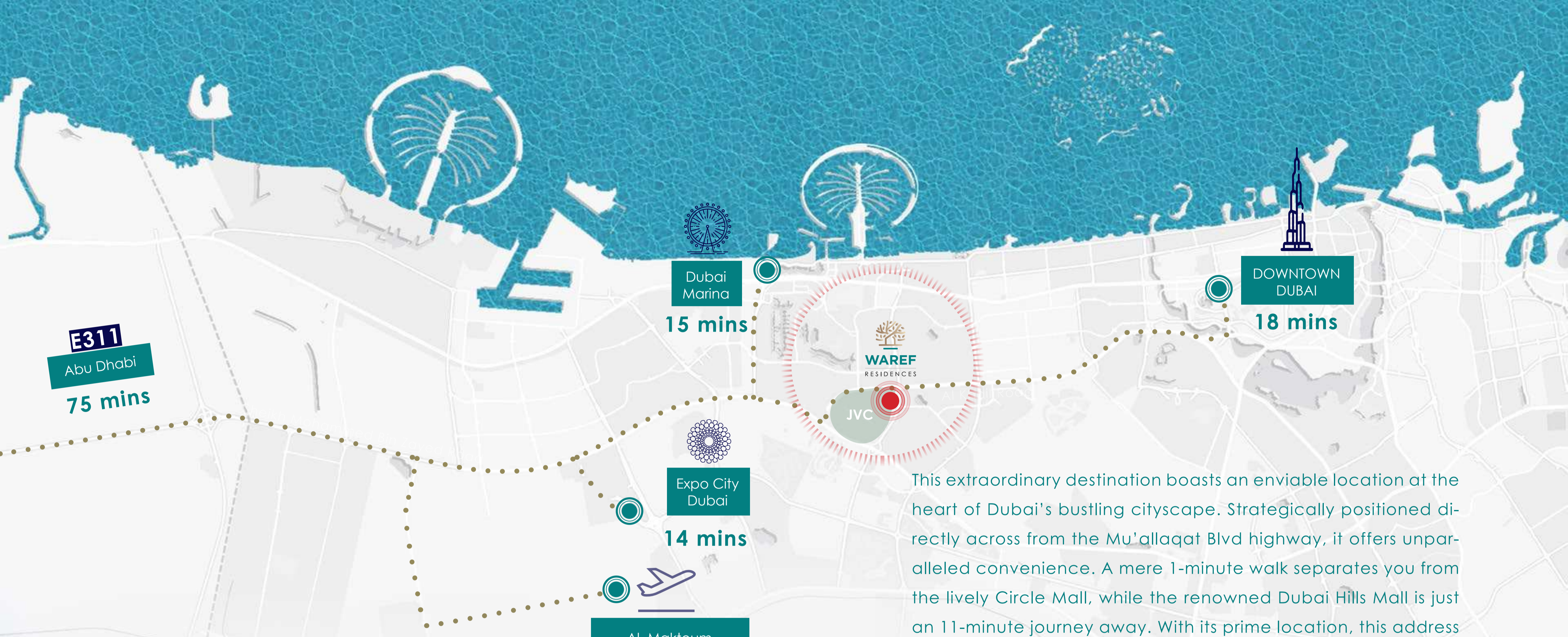


WAREF

RESIDENCES

By





CONNECT TO A BETTER FUTURE

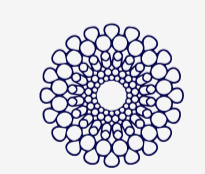
This extraordinary destination boasts an enviable location at the heart of Dubai's bustling cityscape. Strategically positioned directly across from the Mu'allaaqat Blvd highway, it offers unparalleled convenience. A mere 1-minute walk separates you from the lively Circle Mall, while the renowned Dubai Hills Mall is just an 11-minute journey away. With its prime location, this address grants exceptional accessibility to key destinations throughout the city, ensuring a seamless experience for residents and visitors alike.



Drive to Al Maktoum International Airport

28

Mins



Drive to Expo City Dubai

14

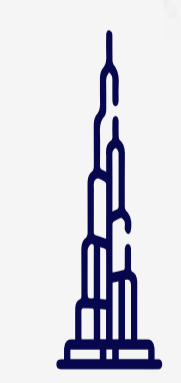
Mins



Drive to Dubai Marina

15

Mins



Drive to Downtown Dubai

18

Mins

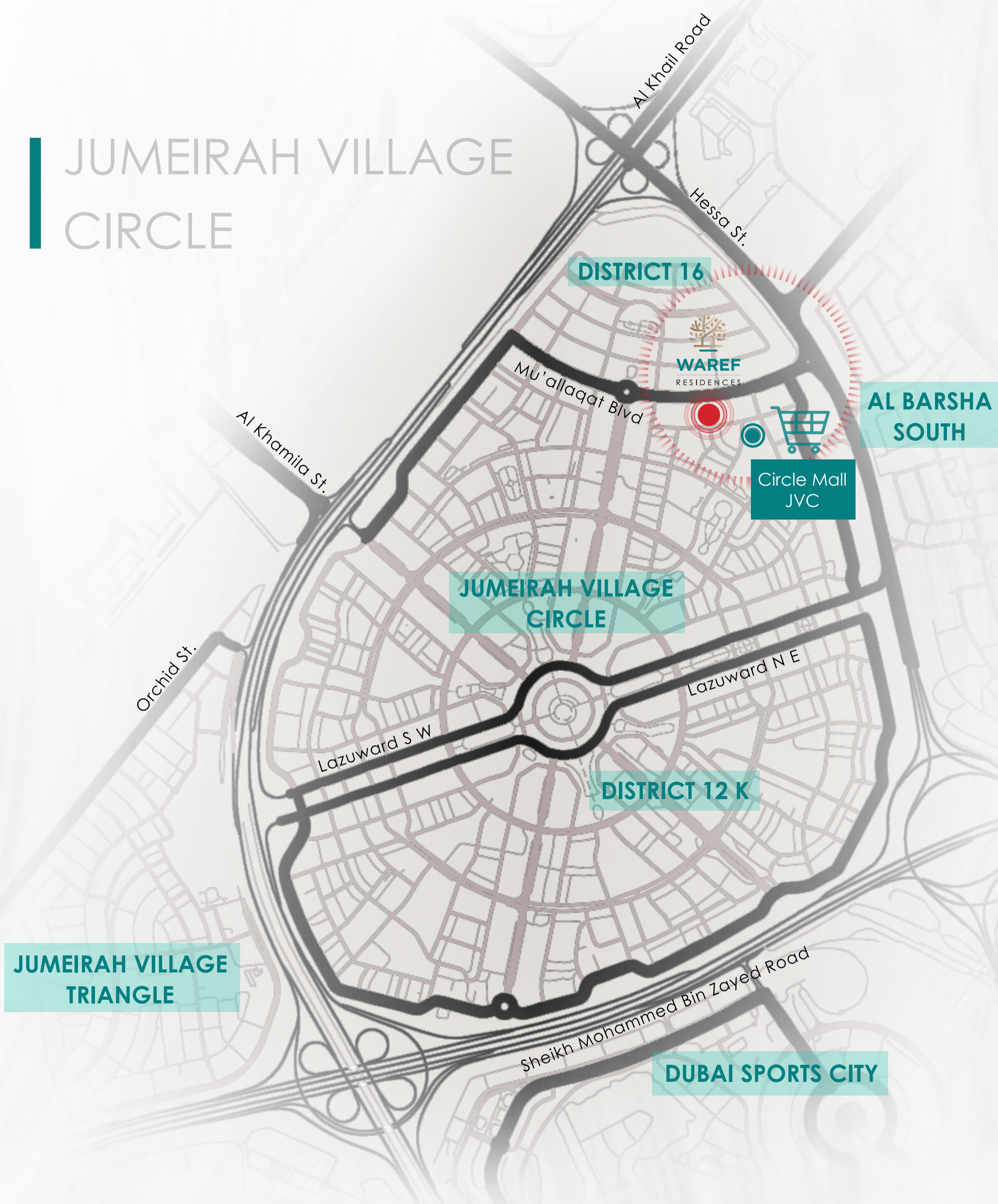


Drive to Abu Dhabi

75

Mins

JUMEIRAH VILLAGE CIRCLE



NESTLED IN A HEART

This exceptional site is nestled in the vibrant heart of Dubai, within JVC district 16, conveniently positioned directly opposite the Mu'allaqat Blvd highway. Just a brief 1 minute walk from the Circle Mall and a mere 13 minutes drive from the renowned Dubai Hills Mall, its prime location offers unparalleled accessibility to key destinations in the city.



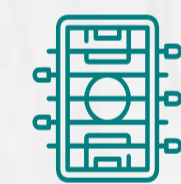
AMENITIES FOR ALL AGES



Outdoor Cinema



Kids' Play Area



Outdoor Games



Adult/ Kids'
Swimming Pool



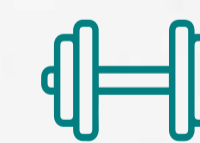
BBQ Area



Jogging Track



EV Charger



Fully Equipped
Gym

WELCOME TO THE COMMUNITY



Welcome to the community where meticulous attention to detail reigns supreme, ensuring that every aspect of your residence exceeds expectations.

Waref Entrance

A residential entrance defined by elegant, modern design—combining clean lines, thoughtful lighting, and spaciousness to create a luxurious and welcoming atmosphere that reflects sophistication and exclusivity.



Lift Lobby



Comfortable Access Corridors



Well-designed corridors provide easy and comfortable access to your unit, offering a seamless connection between shared spaces and your private residence with a touch of elegance and practicality.

WHERE ELEGANCE MEETS TRANQUILITY



Sophisticated luxury interiors blend seamlessly with cozy, inviting spaces - a harmonious oasis where refined design and serene comfort converge, creating an atmosphere of understated elegance and tranquil living.

EMBRACING THE DAY'S GRACE



The essence of the opulent tropical setting with swaying palm trees and inviting pools, combined with the meticulously designed residences and amenities promised by the detailed craftsmanship welcoming and appreciating the beauty and opportunities each new day brings.

THE PERFECT BALANCE



By cultivating a harmonious and balanced interior in the bedroom, individuals can create a space that nurtures relaxation while also allowing for productive activities like working or pursuing hobbies. This alignment between the physical environment and the principles of "The Perfect Balance" helps to foster a sense of well-being and overall satisfaction in daily life.

RELAX, REFRESH & RESTART



The combination of a lavish swimming pool, comfortable seating arrangements, and beautiful architectural surroundings provides a holistic environment that supports the principles of 'relax, refresh, restart' by offering a space for relaxation, revitalization, and a fresh beginning.

■ Every moment is a fresh beginning



CHERISH MOMENTS WITH YOUR BELOVED



This alignment between the emotional significance of cherishing moments with loved ones and the physical surroundings of a cozy bedroom interior emphasizes the importance of creating a nurturing and affectionate space for meaningful connections and shared experiences.

5th Floor Balcony



Enjoy elevated outdoor living on your private fifth-floor Balcony featuring a luxurious jacuzzi, a stylish seating area, an outdoor dining space, and a dedicated children's play area—perfect for relaxation, entertaining, and family moments with a view.

SPLASHING FUN



The residential amenities, including the presence of a pool enhances the sense of fun and adventure, providing a space for families to splash, swim, play games, and enjoy moments of laughter and connection.

UNVEILING MORNING BLISS



A remarkable bedroom interior, with its soothing colors, comfortable furnishings, and thoughtful decor, sets the stage for a tranquil and uplifting morning routine. Cozy and aesthetically pleasing surroundings contribute to a sense of peace and rejuvenation, creating an inviting space where they can start their day feeling refreshed and inspired.

JOYFUL MOMENTS

A well-designed playground and outdoor game areas, create an inviting and safe space for children to run, jump, climb, swing, and interact with their peers. These amenities not only promote physical activity but also foster social interaction, imagination, and creativity.



FEEL LUXURY IN EVERY DETAIL



A sense of indulgence and refinement that makes users feel pampered and engrossed in a truly luxurious experience.

- Smart AC Thermostat



- Advanced Security System



- Phone Controlled Lighting

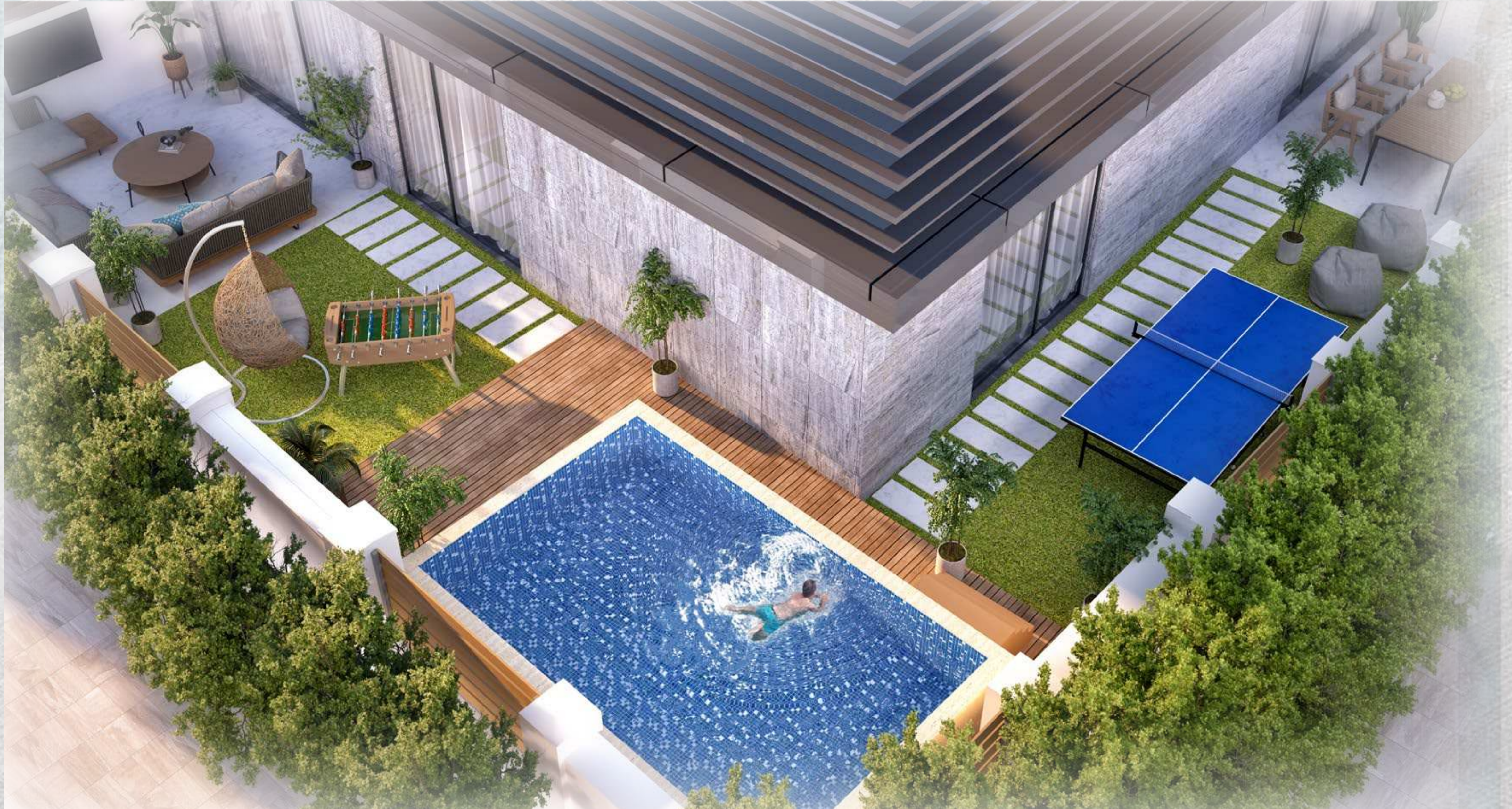


Modern Smart Apartments

Our Smart Apartments offer a modern living experience with advanced technology, including smart thermostats, phone-activated lighting, security systems, and energy-efficient appliances. These homes combine comfort, control, and convenience, allowing you to manage your environment effortlessly with just a phone command, all tailored to your lifestyle.



Ground Floor Terrace



Ground Floor Terrace



Enjoy a private ground-floor terrace featuring a swimming pool, a comfortable seating area, an outdoor dining space, and a children's play zone—perfect for relaxing, entertaining, and family fun, all in one inviting space.

FITNESS OASIS



A harmonious blend of fitness, nature, and relaxation. The outdoor gym facility, designed with elements of a fitness oasis, could feature lush greenery, open spaces, fresh air, and possibly views of stunning landscapes to enhance the overall experience of working out.

AN ELEVATED LIVING EXPERIENCE



THANK YOU
