

The background is a solid teal color with a faint, large-scale floral pattern. The flowers are light-colored, possibly white or light blue, and are rendered in a style that makes them blend into the background. The text is centered horizontally and vertically.

FLOOR LEVELS



LEVELS 1 - 12

TYPICAL FLOOR UNITS

- STUDIO
- 1 BEDROOM
- 2 BEDROOM
- 3 BEDROOM

DISCLAIMER

All plans and 3D visualizations are based on conceptual design and are shown for illustration purposes only. Unit layouts are indicative, not to scale, and subject to change without prior notice. All dimensions, if shown, are approximate and exclude all wall finishes and construction tolerances. Furnishings & accessories shown are for representation only. The final built-up areas may vary from the official measurements issued by the 3rd party survey company accredited by the Dubai land department. The developer reserves the right to make any changes on any part of this document if & when they deem necessary.

The background of the image features several ginkgo leaves in a light, muted green color. The leaves are scattered across the frame, with some showing their characteristic fan shape and fine vein structure. The overall aesthetic is clean and natural.

FLOOR PLANS



STUDIO
APARTMENTS

STUDIO

UNIT 02 | TYPICAL UNIT TYPE 1A

LEVELS 1 - 12
FLOOR PLATE



TOTAL AREA

476.41 sq.ft.
44.26 sq.m.

TOTAL INTERNAL AREA

370.92 sq.ft.
34.46 sq.m.

TOTAL EXTERNAL AREA

105.49 sq.ft.
9.80 sq.m.



DISCLAIMER

All plans and 3D visualizations are based on conceptual design and are shown for illustration purposes only. Unit layouts are indicative, not to scale, and subject to change without prior notice. All dimensions, if shown, are approximate and exclude all wall finishes and construction tolerances. Furnishings & accessories shown are for representation only. The final built-up areas may vary from the official measurements issued by the 3rd party survey company accredited by the Dubai land department. The developer reserves the right to make any changes on any part of this document if & when they deem necessary.

STUDIO

UNIT 07 | TYPICAL UNIT TYPE 1B

LEVELS 1 - 12
FLOOR PLATE



TOTAL AREA

462.20 sq.ft.

42.94 sq.m.

TOTAL INTERNAL AREA

371.03 sq.ft.

34.47 sq.m.

TOTAL EXTERNAL AREA

91.17 sq.ft.

8.47 sq.m.



DISCLAIMER

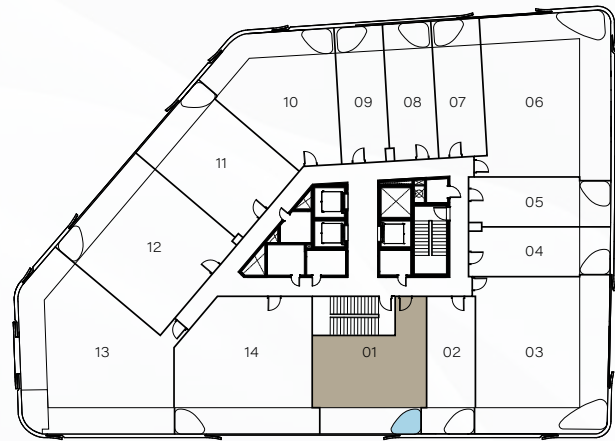
All plans and 3D visualizations are based on conceptual design and are shown for illustration purposes only. Unit layouts are indicative, not to scale, and subject to change without prior notice. All dimensions, if shown, are approximate and exclude all wall finishes and construction tolerances. Furnishings & accessories shown are for representation only. The final built-up areas may vary from the official measurements issued by the 3rd party survey company accredited by the Dubai land department. The developer reserves the right to make any changes on any part of this document if & when they deem necessary.

1 BEDROOM APARTMENTS

1 BEDROOM

UNIT 01 | TYPICAL UNIT TYPE 01

LEVELS 1 - 12
FLOOR PLATE



TOTAL AREA

851.21 sq.ft.

79.08 sq.m.

TOTAL INTERNAL AREA

660.15 sq.ft.

61.33 sq.m.

TOTAL EXTERNAL AREA

191.06 sq.ft.

17.75 sq.m.



DISCLAIMER

All plans and 3D visualizations are based on conceptual design and are shown for illustration purposes only. Unit layouts are indicative, not to scale, and subject to change without prior notice. All dimensions, if shown, are approximate and exclude all wall finishes and construction tolerances. Furnishings & accessories shown are for representation only. The final built-up areas may vary from the official measurements issued by the 3rd party survey company accredited by the Dubai land department. The developer reserves the right to make any changes on any part of this document if & when they deem necessary.

1 BEDROOM

UNIT 10 | TYPICAL UNIT TYPE 02

LEVELS 1 - 12
FLOOR PLATE



TOTAL AREA

945.93 sq.ft.
87.88 sq.m.

TOTAL INTERNAL AREA

691.37 sq.ft.
64.23 sq.m.

TOTAL EXTERNAL AREA

254.57 sq.ft.
23.65 sq.m.



DISCLAIMER

All plans and 3D visualizations are based on conceptual design and are shown for illustration purposes only. Unit layouts are indicative, not to scale, and subject to change without prior notice. All dimensions, if shown, are approximate and exclude all wall finishes and construction tolerances. Furnishings & accessories shown are for representation only. The final built-up areas may vary from the official measurements issued by the 3rd party survey company accredited by the Dubai land department. The developer reserves the right to make any changes on any part of this document if & when they deem necessary.

1 BEDROOM

UNIT 11 | TYPICAL UNIT TYPE 03

LEVELS 1 - 12
FLOOR PLATE



TOTAL AREA

882.43 sq.ft.
81.98 sq.m.

TOTAL INTERNAL AREA

707.94 sq.ft.
65.77 sq.m.

TOTAL EXTERNAL AREA

174.48 sq.ft.
16.21 sq.m.



DISCLAIMER

All plans and 3D visualizations are based on conceptual design and are shown for illustration purposes only. Unit layouts are indicative, not to scale, and subject to change without prior notice. All dimensions, if shown, are approximate and exclude all wall finishes and construction tolerances. Furnishings & accessories shown are for representation only. The final built-up areas may vary from the official measurements issued by the 3rd party survey company accredited by the Dubai land department. The developer reserves the right to make any changes on any part of this document if & when they deem necessary.

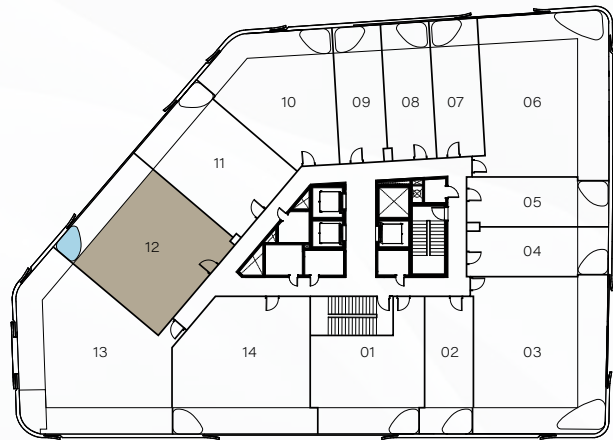
The background of the image shows a bed with white linens and a patterned blanket. The text is centered over the image.

2 BEDROOM APARTMENTS

2 BEDROOM

UNIT 12 | TYPICAL UNIT TYPE 01

LEVELS 1 - 12
FLOOR PLATE



TOTAL AREA

1,150.66 sq.ft.
106.90 sq.m.

TOTAL INTERNAL AREA

924.40 sq.ft.
85.88 sq.m.

TOTAL EXTERNAL AREA

226.26 sq.ft.
21.02 sq.m.



DISCLAIMER

All plans and 3D visualizations are based on conceptual design and are shown for illustration purposes only. Unit layouts are indicative, not to scale, and subject to change without prior notice. All dimensions, if shown, are approximate and exclude all wall finishes and construction tolerances. Furnishings & accessories shown are for representation only. The final built-up areas may vary from the official measurements issued by the 3rd party survey company accredited by the Dubai land department. The developer reserves the right to make any changes on any part of this document if & when they deem necessary.

2 BEDROOM

UNIT 14 | TYPICAL UNIT TYPE 02

LEVELS 1 - 12
FLOOR PLATE



TOTAL AREA

1,246.89 sq.ft.
115.84 sq.m.

TOTAL INTERNAL AREA

969.18 sq.ft.
90.04 sq.m.

TOTAL EXTERNAL AREA

277.71 sq.ft.
25.80 sq.m.



DISCLAIMER

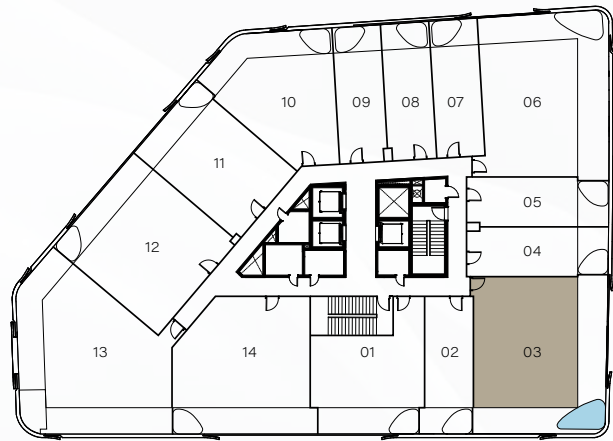
All plans and 3D visualizations are based on conceptual design and are shown for illustration purposes only. Unit layouts are indicative, not to scale, and subject to change without prior notice. All dimensions, if shown, are approximate and exclude all wall finishes and construction tolerances. Furnishings & accessories shown are for representation only. The final built-up areas may vary from the official measurements issued by the 3rd party survey company accredited by the Dubai land department. The developer reserves the right to make any changes on any part of this document if & when they deem necessary.

3 BEDROOM APARTMENTS

3 BEDROOM

UNIT 03 | TYPICAL UNIT TYPE 01

LEVELS 1 - 12
FLOOR PLATE



TOTAL AREA

1,474.98 sq.ft.
137.03 sq.m.

TOTAL INTERNAL AREA

954.11 sq.ft.
88.64 sq.m.

TOTAL EXTERNAL AREA

520.87 sq.ft.
48.39 sq.m.



DISCLAIMER

All plans and 3D visualizations are based on conceptual design and are shown for illustration purposes only. Unit layouts are indicative, not to scale, and subject to change without prior notice. All dimensions, if shown, are approximate and exclude all wall finishes and construction tolerances. Furnishings & accessories shown are for representation only. The final built-up areas may vary from the official measurements issued by the 3rd party survey company accredited by the Dubai land department. The developer reserves the right to make any changes on any part of this document if & when they deem necessary.

3 BEDROOM

UNIT 06 | TYPICAL UNIT TYPE 02

LEVELS 1 - 12
FLOOR PLATE



TOTAL AREA

1,480.36 sq.ft.
137.53 sq.m.

TOTAL INTERNAL AREA

920.85 sq.ft.
85.55 sq.m.

TOTAL EXTERNAL AREA

559.51 sq.ft.
51.98 sq.m.



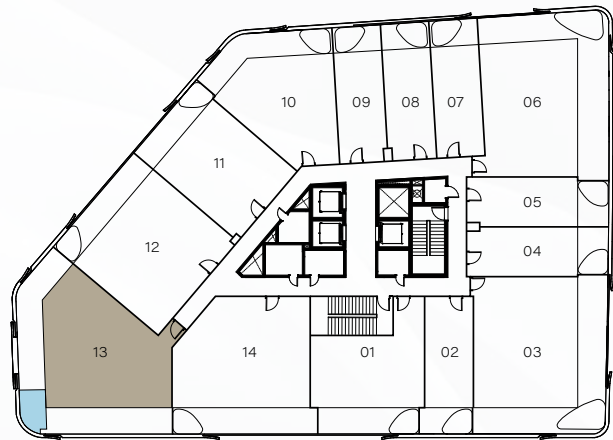
DISCLAIMER

All plans and 3D visualizations are based on conceptual design and are shown for illustration purposes only. Unit layouts are indicative, not to scale, and subject to change without prior notice. All dimensions, if shown, are approximate and exclude all wall finishes and construction tolerances. Furnishings & accessories shown are for representation only. The final built-up areas may vary from the official measurements issued by the 3rd party survey company accredited by the Dubai land department. The developer reserves the right to make any changes on any part of this document if & when they deem necessary.

3 BEDROOM

UNIT 13 | TYPICAL UNIT TYPE 03

LEVELS 1 - 12
FLOOR PLATE



TOTAL AREA

1,556.14 sq.ft.
144.57 sq.m.

TOTAL INTERNAL AREA

968.21 sq.ft.
89.95 sq.m.

TOTAL EXTERNAL AREA

587.92 sq.ft.
54.62 sq.m.



DISCLAIMER

All plans and 3D visualizations are based on conceptual design and are shown for illustration purposes only. Unit layouts are indicative, not to scale, and subject to change without prior notice. All dimensions, if shown, are approximate and exclude all wall finishes and construction tolerances. Furnishings & accessories shown are for representation only. The final built-up areas may vary from the official measurements issued by the 3rd party survey company accredited by the Dubai land department. The developer reserves the right to make any changes on any part of this document if & when they deem necessary.