

# WEYBRIDGE GARDENS 4

KENSINGTON EDITION

PRE LAUNCH FLOOR PLANS



LEOS





## LEVELS 1 - 4 & 11 - 14

TYPICAL FLOOR UNITS

- STUDIO
- 1 BEDROOM
- 2 BEDROOM
- 3 BEDROOM
- 4 BEDROOM SKY VILLAS
- PRIVATE POOL

**DISCLAIMER**

All plans and 3D visualizations are based on conceptual design and are shown for illustration purposes only. Unit layouts are indicative, not to scale, and subject to change without prior notice. All dimensions, if shown, are approximate and exclude all wall finishes and construction tolerances. Furnishings & accessories shown are for representation only. The final built-up areas may vary from the official measurements issued by the 3rd party survey company accredited by the Dubai land department. The developer reserves the right to make any changes on any part of this document if & when they deem necessary.



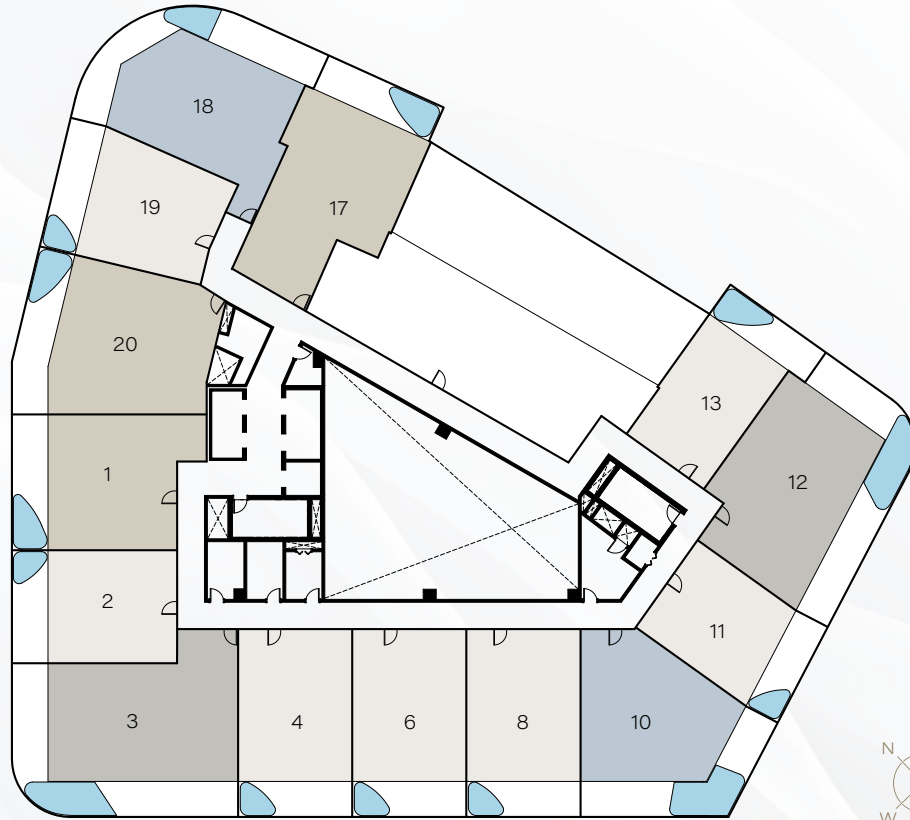
## LEVELS 5 - 10

TYPICAL FLOOR UNITS

- STUDIO
- 1 BEDROOM
- 2 BEDROOM
- 3 BEDROOM
- 4 BEDROOM SKY VILLAS
- PRIVATE POOL

**DISCLAIMER**

All plans and 3D visualizations are based on conceptual design and are shown for illustration purposes only. Unit layouts are indicative, not to scale, and subject to change without prior notice. All dimensions, if shown, are approximate and exclude all wall finishes and construction tolerances. Furnishings & accessories shown are for representation only. The final built-up areas may vary from the official measurements issued by the 3rd party survey company accredited by the Dubai land department. The developer reserves the right to make any changes on any part of this document if & when they deem necessary.



## LEVEL 15

TYPICAL FLOOR UNITS

- 1 BEDROOM
- 2 BEDROOM
- 3 BEDROOM
- 4 BEDROOM SKY VILLAS
- PRIVATE POOL



**DISCLAIMER**

All plans and 3D visualizations are based on conceptual design and are shown for illustration purposes only. Unit layouts are indicative, not to scale, and subject to change without prior notice. All dimensions, if shown, are approximate and exclude all wall finishes and construction tolerances. Furnishings & accessories shown are for representation only. The final built-up areas may vary from the official measurements issued by the 3rd party survey company accredited by the Dubai land department. The developer reserves the right to make any changes on any part of this document if & when they deem necessary.



FLOOR PLANS

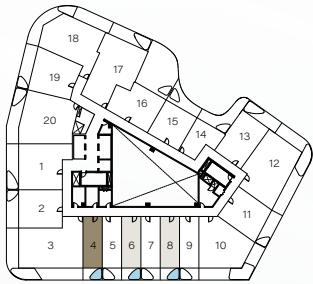


STUDIO  
APARTMENTS

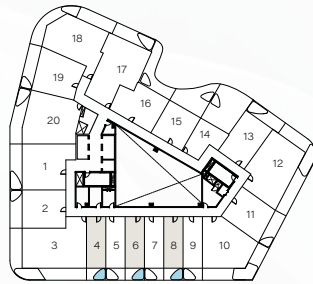
# STUDIO

## UNIT 04 | TYPICAL UNIT TYPE 1A

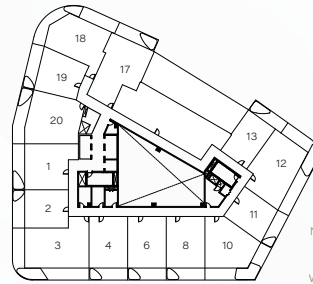
LEVELS 1 - 4 & 11 - 14  
FLOOR PLATE



LEVELS 5 - 10  
FLOOR PLATE



LEVEL 15  
FLOOR PLATE



### TOTAL AREA

544.12 sq.ft.

50.55 sq.m.

### TOTAL INTERNAL AREA

432.06 sq.ft.

40.14 sq.m.

### TOTAL EXTERNAL AREA

112.05 sq.ft.

10.41 sq.m.



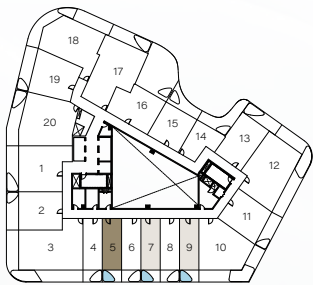
### DISCLAIMER

All plans and 3D visualizations are based on conceptual design and are shown for illustration purposes only. Unit layouts are indicative, not to scale, and subject to change without prior notice. All dimensions, if shown, are approximate and exclude all wall finishes and construction tolerances. Furnishings & accessories shown are for representation only. The final built-up areas may vary from the official measurements issued by the 3rd party survey company accredited by the Dubai land department. The developer reserves the right to make any changes on any part of this document if & when they deem necessary.

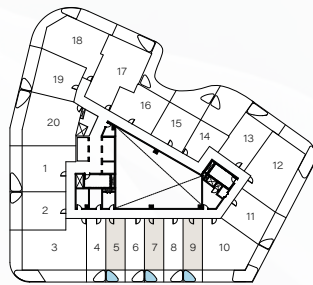
# STUDIO

## UNIT 05 | TYPICAL UNIT TYPE 1B

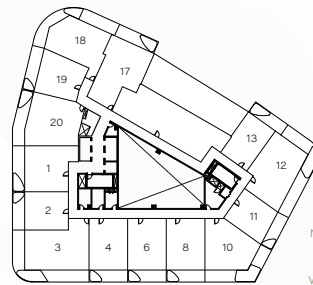
LEVELS 1 - 4 & 11 - 14  
FLOOR PLATE



LEVELS 5 - 10  
FLOOR PLATE



LEVEL 15  
FLOOR PLATE



### TOTAL AREA

544.12 sq.ft.

50.55 sq.m.

### TOTAL INTERNAL AREA

432.06 sq.ft.

40.14 sq.m.

### TOTAL EXTERNAL AREA

112.05 sq.ft.

10.41 sq.m.



#### DISCLAIMER

All plans and 3D visualizations are based on conceptual design and are shown for illustration purposes only. Unit layouts are indicative, not to scale, and subject to change without prior notice. All dimensions, if shown, are approximate and exclude all wall finishes and construction tolerances. Furnishings & accessories shown are for representation only. The final built-up areas may vary from the official measurements issued by the 3rd party survey company accredited by the Dubai land department. The developer reserves the right to make any changes on any part of this document if & when they deem necessary.

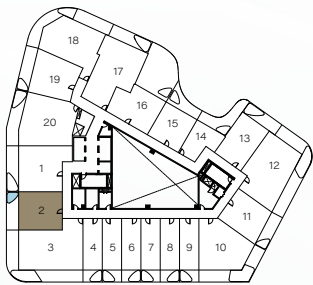


1 BEDROOM  
APARTMENTS

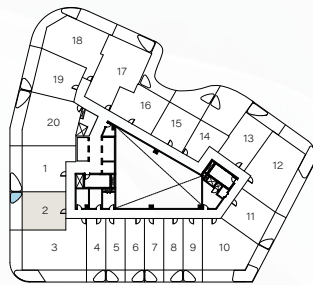
# 1 BEDROOM

UNIT 02 | TYPICAL UNIT TYPE 01

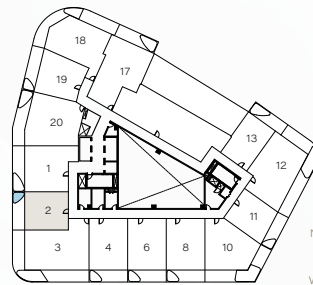
LEVELS 1 - 4 & 11 - 14  
FLOOR PLATE



LEVELS 5 - 10  
FLOOR PLATE



LEVEL 15  
FLOOR PLATE



TOTAL AREA

951.74 sq.ft.

88.42 sq.m.

TOTAL INTERNAL AREA

728.39 sq.ft.

67.67 sq.m.

TOTAL EXTERNAL AREA

223.35 sq.ft.

20.75 sq.m.



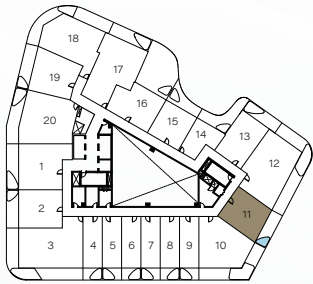
## DISCLAIMER

All plans and 3D visualizations are based on conceptual design and are shown for illustration purposes only. Unit layouts are indicative, not to scale, and subject to change without prior notice. All dimensions, if shown, are approximate and exclude all wall finishes and construction tolerances. Furnishings & accessories shown are for representation only. The final built-up areas may vary from the official measurements issued by the 3rd party survey company accredited by the Dubai land department. The developer reserves the right to make any changes on any part of this document if & when they deem necessary.

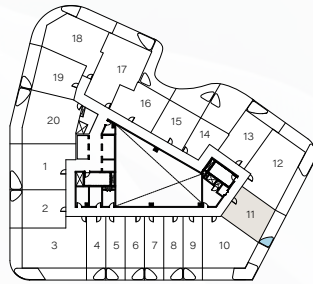
# 1 BEDROOM

UNIT 11 | TYPICAL UNIT TYPE 02

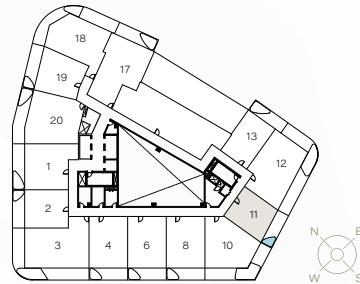
LEVELS 1 - 4 & 11 - 14  
FLOOR PLATE



LEVELS 5 - 10  
FLOOR PLATE



LEVEL 15  
FLOOR PLATE



## TOTAL AREA

890.61 sq.ft.  
82.74 sq.m.

## TOTAL INTERNAL AREA

679.20 sq.ft.  
63.10 sq.m.

## TOTAL EXTERNAL AREA

211.40 sq.ft.  
19.64 sq.m.



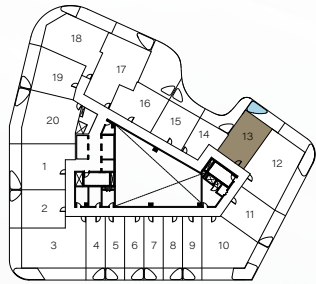
### DISCLAIMER

All plans and 3D visualizations are based on conceptual design and are shown for illustration purposes only. Unit layouts are indicative, not to scale, and subject to change without prior notice. All dimensions, if shown, are approximate and exclude all wall finishes and construction tolerances. Furnishings & accessories shown are for representation only. The final built-up areas may vary from the official measurements issued by the 3rd party survey company accredited by the Dubai land department. The developer reserves the right to make any changes on any part of this document if & when they deem necessary.

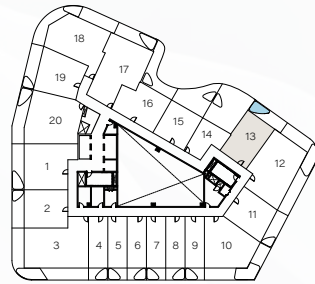
# 1 BEDROOM

UNIT 13 | TYPICAL UNIT TYPE 03

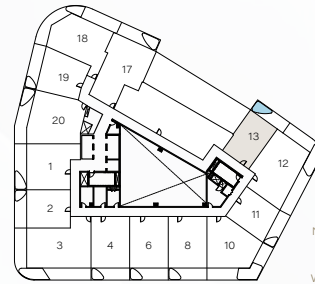
LEVELS 1 - 4 & 11 - 14  
FLOOR PLATE



LEVELS 5 - 10  
FLOOR PLATE



LEVEL 15  
FLOOR PLATE



TOTAL AREA

916.01 sq.ft.

85.10 sq.m.

TOTAL INTERNAL AREA

689.97 sq.ft.

64.10 sq.m.

TOTAL EXTERNAL AREA

226.04 sq.ft.

21.00 sq.m.



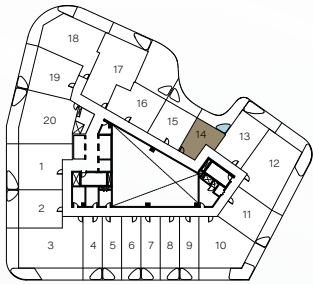
## DISCLAIMER

All plans and 3D visualizations are based on conceptual design and are shown for illustration purposes only. Unit layouts are indicative, not to scale, and subject to change without prior notice. All dimensions, if shown, are approximate and exclude all wall finishes and construction tolerances. Furnishings & accessories shown are for representation only. The final built-up areas may vary from the official measurements issued by the 3rd party survey company accredited by the Dubai land department. The developer reserves the right to make any changes on any part of this document if & when they deem necessary.

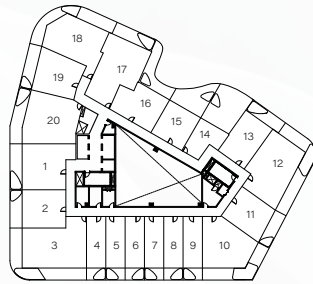
# 1 BEDROOM

UNIT 14 | TYPICAL UNIT TYPE 04A

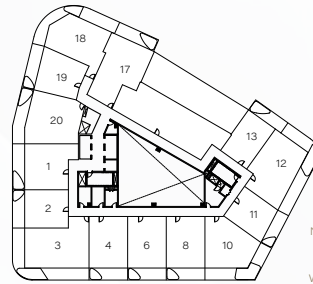
LEVELS 1 - 4 & 11 - 14  
FLOOR PLATE



LEVELS 5 - 10  
FLOOR PLATE



LEVEL 15  
FLOOR PLATE



TOTAL AREA

753.47 sq.ft.

70 sq.m.

TOTAL INTERNAL AREA

425.82 sq.ft.

39.56 sq.m.

TOTAL EXTERNAL AREA

327.65 sq.ft.

30.44 sq.m.



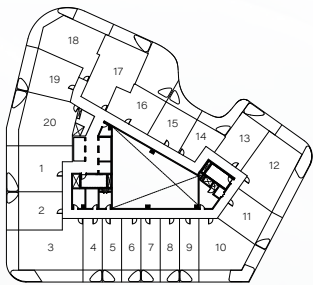
## DISCLAIMER

All plans and 3D visualizations are based on conceptual design and are shown for illustration purposes only. Unit layouts are indicative, not to scale, and subject to change without prior notice. All dimensions, if shown, are approximate and exclude all wall finishes and construction tolerances. Furnishings & accessories shown are for representation only. The final built-up areas may vary from the official measurements issued by the 3rd party survey company accredited by the Dubai land department. The developer reserves the right to make any changes on any part of this document if & when they deem necessary.

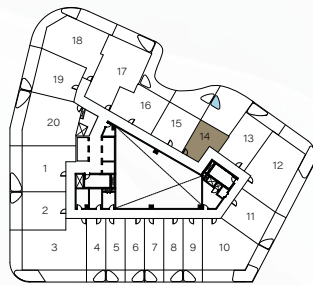
# 1 BEDROOM

UNIT 14 | TYPICAL UNIT TYPE 04B

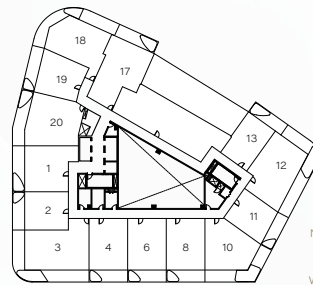
LEVELS 1 - 4 & 11 - 14  
FLOOR PLATE



LEVELS 5 - 10  
FLOOR PLATE



LEVEL 15  
FLOOR PLATE



## TOTAL AREA

1,086.19 sq.ft.  
100.91 sq.m.

## TOTAL INTERNAL AREA

425.82 sq.ft.  
39.56 sq.m.

## TOTAL EXTERNAL AREA

660.37 sq.ft.  
61.35 sq.m.



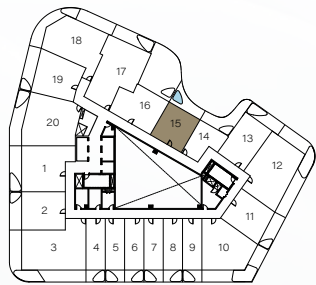
## DISCLAIMER

All plans and 3D visualizations are based on conceptual design and are shown for illustration purposes only. Unit layouts are indicative, not to scale, and subject to change without prior notice. All dimensions, if shown, are approximate and exclude all wall finishes and construction tolerances. Furnishings & accessories shown are for representation only. The final built-up areas may vary from the official measurements issued by the 3rd party survey company accredited by the Dubai land department. The developer reserves the right to make any changes on any part of this document if & when they deem necessary.

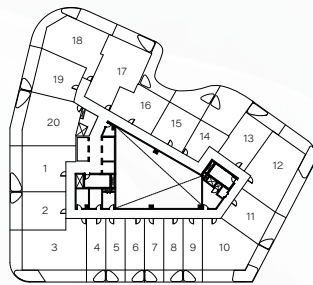
# 1 BEDROOM

UNIT 15 | TYPICAL UNIT TYPE 05A

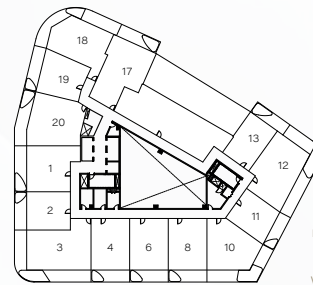
LEVELS 1 - 4 & 11 - 14  
FLOOR PLATE



LEVELS 5 - 10  
FLOOR PLATE



LEVEL 15  
FLOOR PLATE



TOTAL AREA

822.26 sq.ft.

76.39 sq.m.

TOTAL INTERNAL AREA

591.48 sq.ft.

54.95 sq.m.

TOTAL EXTERNAL AREA

230.78 sq.ft.

21.44 sq.m.



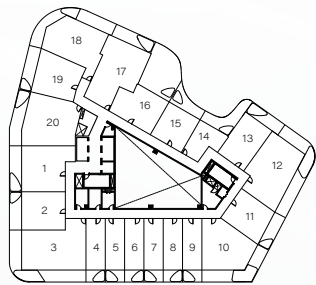
## DISCLAIMER

All plans and 3D visualizations are based on conceptual design and are shown for illustration purposes only. Unit layouts are indicative, not to scale, and subject to change without prior notice. All dimensions, if shown, are approximate and exclude all wall finishes and construction tolerances. Furnishings & accessories shown are for representation only. The final built-up areas may vary from the official measurements issued by the 3rd party survey company accredited by the Dubai land department. The developer reserves the right to make any changes on any part of this document if & when they deem necessary.

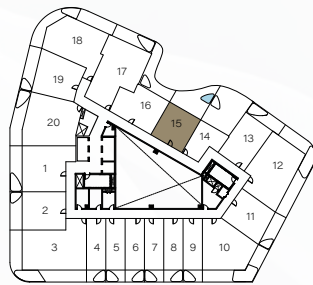
# 1 BEDROOM

UNIT 15 | TYPICAL UNIT TYPE 05B

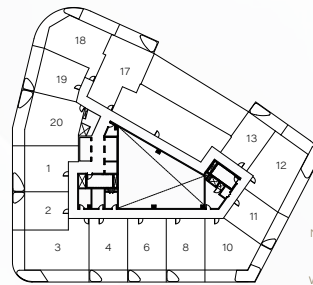
LEVELS 1 - 4 & 11 - 14  
FLOOR PLATE



LEVELS 5 - 10  
FLOOR PLATE



LEVEL 15  
FLOOR PLATE



TOTAL AREA

1,005.56 sq.ft.

93.42 sq.m.

TOTAL INTERNAL AREA

591.48 sq.ft.

54.95 sq.m.

TOTAL EXTERNAL AREA

414.09 sq.ft.

38.47 sq.m.



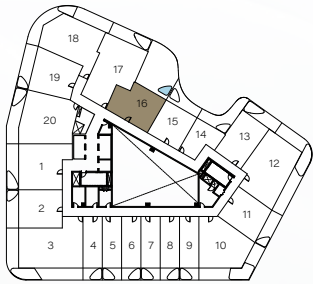
## DISCLAIMER

All plans and 3D visualizations are based on conceptual design and are shown for illustration purposes only. Unit layouts are indicative, not to scale, and subject to change without prior notice. All dimensions, if shown, are approximate and exclude all wall finishes and construction tolerances. Furnishings & accessories shown are for representation only. The final built-up areas may vary from the official measurements issued by the 3rd party survey company accredited by the Dubai land department. The developer reserves the right to make any changes on any part of this document if & when they deem necessary.

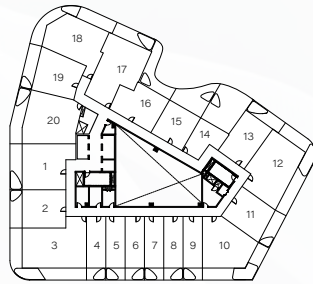
# 1 BEDROOM

UNIT 16 | TYPICAL UNIT TYPE 06A

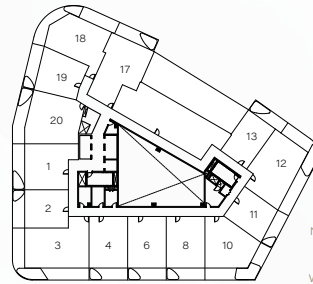
LEVELS 1 - 4 & 11 - 14  
FLOOR PLATE



LEVELS 5 - 10  
FLOOR PLATE



LEVEL 15  
FLOOR PLATE



TOTAL AREA  
1,491.88 sq.ft.  
138.60 sq.m.

TOTAL INTERNAL AREA  
755.63 sq.ft.  
70.20 sq.m.

TOTAL EXTERNAL AREA  
736.25 sq.ft.  
68.40 sq.m.



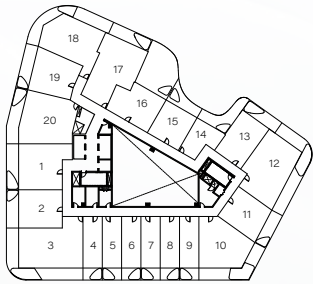
**DISCLAIMER**

All plans and 3D visualizations are based on conceptual design and are shown for illustration purposes only. Unit layouts are indicative, not to scale, and subject to change without prior notice. All dimensions, if shown, are approximate and exclude all wall finishes and construction tolerances. Furnishings & accessories shown are for representation only. The final built-up areas may vary from the official measurements issued by the 3rd party survey company accredited by the Dubai land department. The developer reserves the right to make any changes on any part of this document if & when they deem necessary.

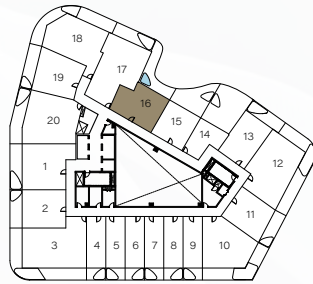
# 1 BEDROOM

UNIT 16 | TYPICAL UNIT TYPE 06B

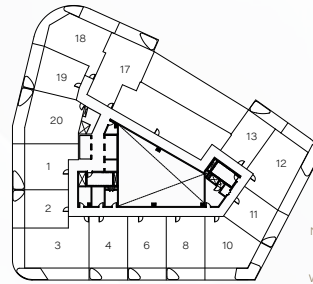
LEVELS 1 - 4 & 11 - 14  
FLOOR PLATE



LEVELS 5 - 10  
FLOOR PLATE



LEVEL 15  
FLOOR PLATE



TOTAL AREA  
1,110.84 sq.ft.  
103.20 sq.m.

TOTAL INTERNAL AREA  
755.63 sq.ft.  
70.20 sq.m.

TOTAL EXTERNAL AREA  
355.21 sq.ft.  
33.00 sq.m.



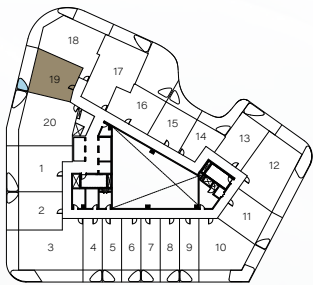
## DISCLAIMER

All plans and 3D visualizations are based on conceptual design and are shown for illustration purposes only. Unit layouts are indicative, not to scale, and subject to change without prior notice. All dimensions, if shown, are approximate and exclude all wall finishes and construction tolerances. Furnishings & accessories shown are for representation only. The final built-up areas may vary from the official measurements issued by the 3rd party survey company accredited by the Dubai land department. The developer reserves the right to make any changes on any part of this document if & when they deem necessary.

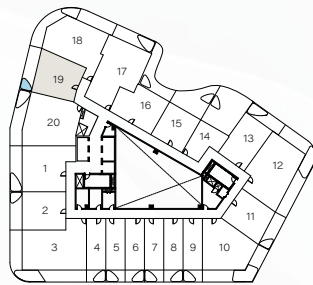
# 1 BEDROOM

UNIT 19 | TYPICAL UNIT TYPE 07

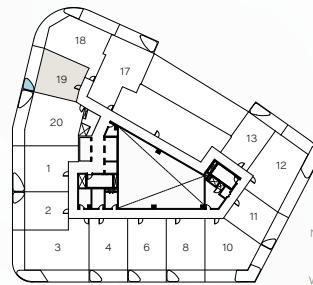
LEVELS 1 - 4 & 11 - 14  
FLOOR PLATE



LEVELS 5 - 10  
FLOOR PLATE



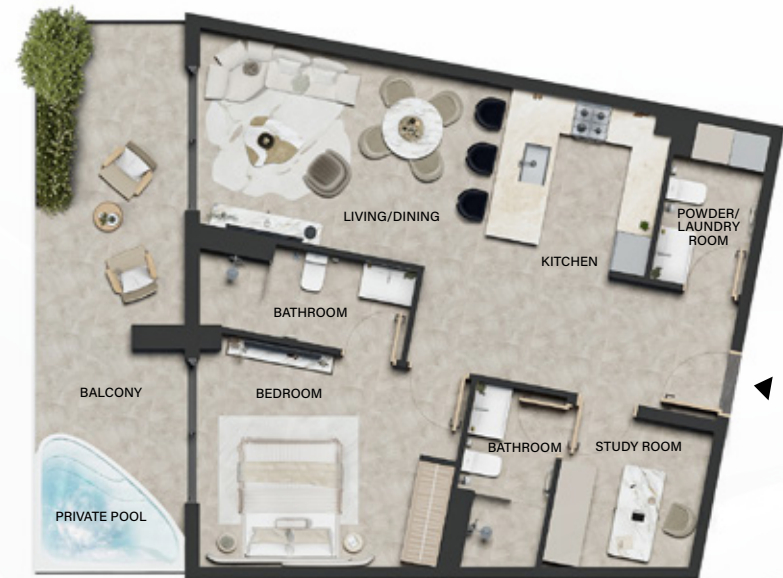
LEVEL 15  
FLOOR PLATE



TOTAL AREA  
1,057.12 sq.ft.  
98.21 sq.m.

TOTAL INTERNAL AREA  
797.93 sq.ft.  
74.13 sq.m.

TOTAL EXTERNAL AREA  
259.19 sq.ft.  
24.08 sq.m.



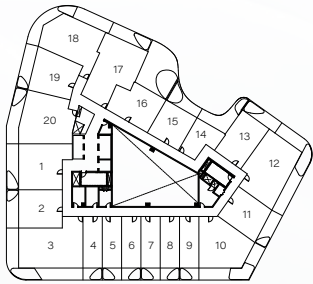
## DISCLAIMER

All plans and 3D visualizations are based on conceptual design and are shown for illustration purposes only. Unit layouts are indicative, not to scale, and subject to change without prior notice. All dimensions, if shown, are approximate and exclude all wall finishes and construction tolerances. Furnishings & accessories shown are for representation only. The final built-up areas may vary from the official measurements issued by the 3rd party survey company accredited by the Dubai land department. The developer reserves the right to make any changes on any part of this document if & when they deem necessary.

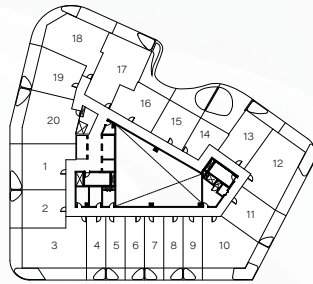
# 1 BEDROOM

UNIT 04, 06, 08 | TYPICAL UNIT TYPE 08

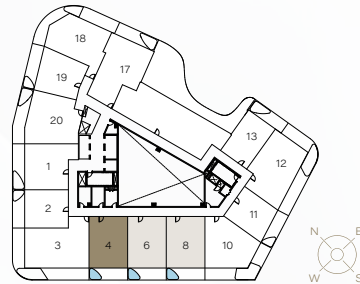
LEVELS 1 - 4 & 11 - 14  
FLOOR PLATE



LEVELS 5 - 10  
FLOOR PLATE



LEVEL 15  
FLOOR PLATE



TOTAL AREA  
1,100.18 sq.ft.  
102.21 sq.m.

TOTAL INTERNAL AREA  
877.04 sq.ft.  
81.48 sq.m.

TOTAL EXTERNAL AREA  
223.14 sq.ft.  
20.73 sq.m.



## DISCLAIMER

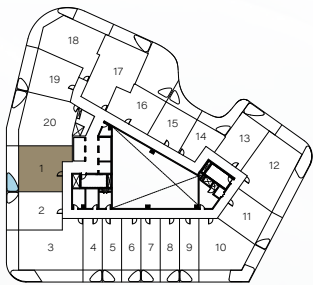
All plans and 3D visualizations are based on conceptual design and are shown for illustration purposes only. Unit layouts are indicative, not to scale, and subject to change without prior notice. All dimensions, if shown, are approximate and exclude all wall finishes and construction tolerances. Furnishings & accessories shown are for representation only. The final built-up areas may vary from the official measurements issued by the 3rd party survey company accredited by the Dubai land department. The developer reserves the right to make any changes on any part of this document if & when they deem necessary.



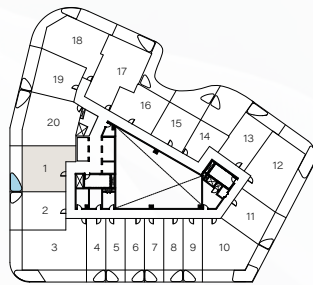
# 2 BEDROOM

UNIT 01 | TYPICAL UNIT TYPE 01

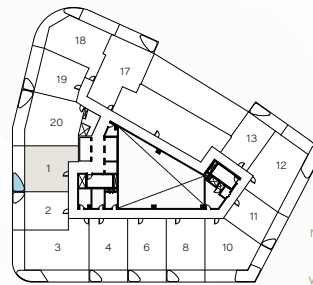
LEVELS 1 - 4 & 11 - 14  
FLOOR PLATE



LEVELS 5 - 10  
FLOOR PLATE



LEVEL 15  
FLOOR PLATE



TOTAL AREA

1,209.65 sq.ft.

112.38 sq.m.

TOTAL INTERNAL AREA

946.90 sq.ft.

87.97 sq.m.

TOTAL EXTERNAL AREA

262.75 sq.ft.

24.41 sq.m.



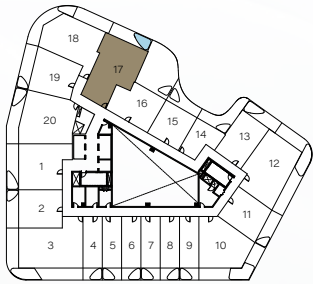
## DISCLAIMER

All plans and 3D visualizations are based on conceptual design and are shown for illustration purposes only. Unit layouts are indicative, not to scale, and subject to change without prior notice. All dimensions, if shown, are approximate and exclude all wall finishes and construction tolerances. Furnishings & accessories shown are for representation only. The final built-up areas may vary from the official measurements issued by the 3rd party survey company accredited by the Dubai land department. The developer reserves the right to make any changes on any part of this document if & when they deem necessary.

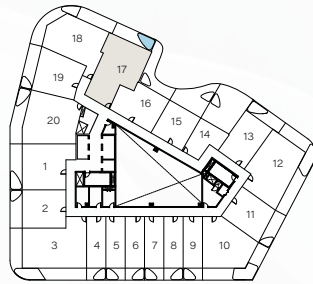
# 2 BEDROOM

UNIT 17 | TYPICAL UNIT TYPE 02

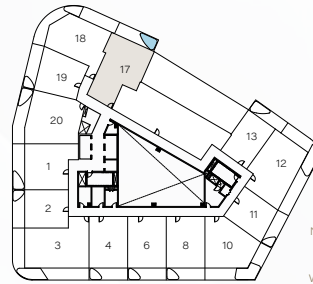
LEVELS 1 - 4 & 11 - 14  
FLOOR PLATE



LEVELS 5 - 10  
FLOOR PLATE



LEVEL 15  
FLOOR PLATE



TOTAL AREA

1,420.51 sq.ft.

131.97 sq.m.

TOTAL INTERNAL AREA

1,172.73 sq.ft.

108.95 sq.m.

TOTAL EXTERNAL AREA

247.79 sq.ft.

23.02 sq.m.



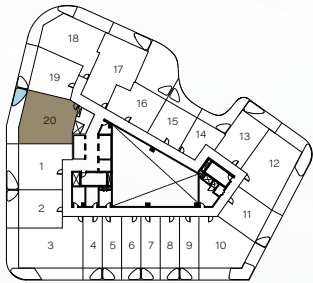
## DISCLAIMER

All plans and 3D visualizations are based on conceptual design and are shown for illustration purposes only. Unit layouts are indicative, not to scale, and subject to change without prior notice. All dimensions, if shown, are approximate and exclude all wall finishes and construction tolerances. Furnishings & accessories shown are for representation only. The final built-up areas may vary from the official measurements issued by the 3rd party survey company accredited by the Dubai land department. The developer reserves the right to make any changes on any part of this document if & when they deem necessary.

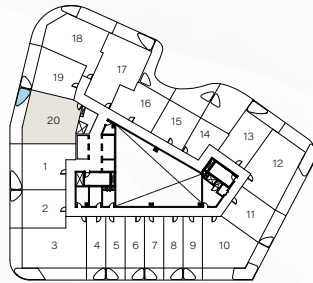
# 2 BEDROOM

UNIT 20 | TYPICAL UNIT TYPE 03

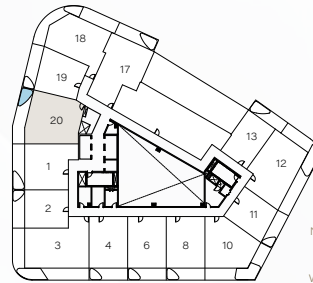
LEVELS 1 - 4 & 11 - 14  
FLOOR PLATE



LEVELS 5 - 10  
FLOOR PLATE



LEVEL 15  
FLOOR PLATE



TOTAL AREA

1,471.10 sq.ft.

136.67 sq.m.

TOTAL INTERNAL AREA

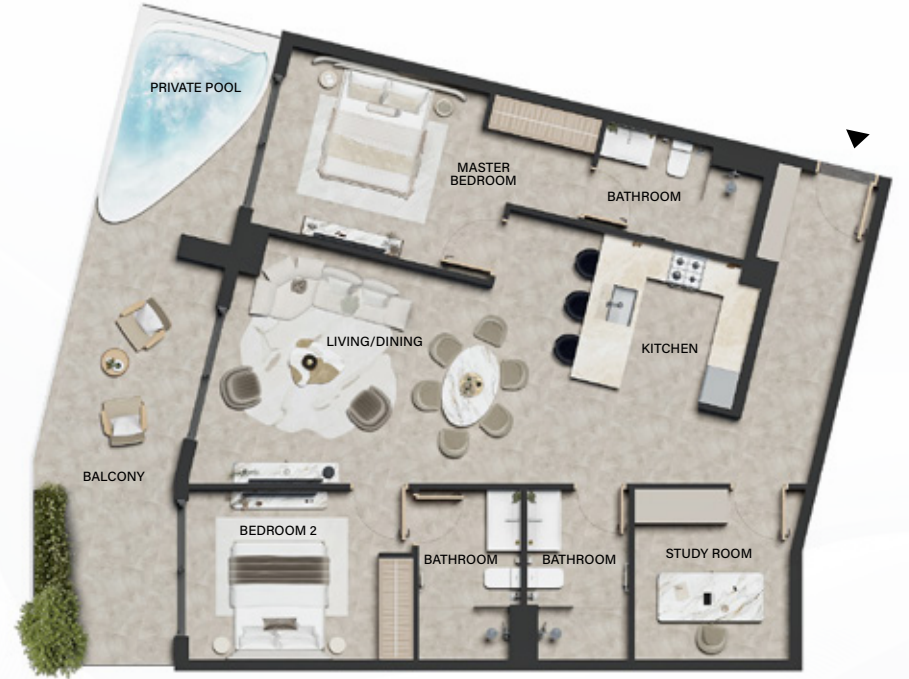
1,144.31 sq.ft.

106.31 sq.m.

TOTAL EXTERNAL AREA

326.79 sq.ft.

30.36 sq.m.



## DISCLAIMER

All plans and 3D visualizations are based on conceptual design and are shown for illustration purposes only. Unit layouts are indicative, not to scale, and subject to change without prior notice. All dimensions, if shown, are approximate and exclude all wall finishes and construction tolerances. Furnishings & accessories shown are for representation only. The final built-up areas may vary from the official measurements issued by the 3rd party survey company accredited by the Dubai land department. The developer reserves the right to make any changes on any part of this document if & when they deem necessary.



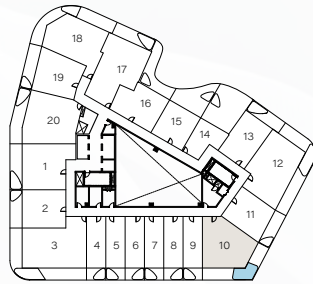
# 3 BEDROOM

UNIT 10 | TYPICAL UNIT TYPE 01

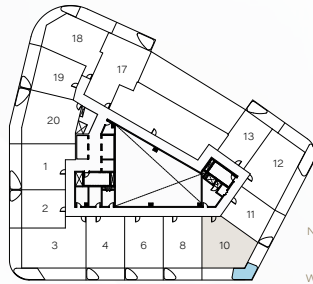
LEVELS 1 - 4 & 11 - 14  
FLOOR PLATE



LEVELS 5 - 10  
FLOOR PLATE



LEVEL 15  
FLOOR PLATE



TOTAL AREA  
1,429.23 sq.ft.  
132.78 sq.m.

TOTAL INTERNAL AREA  
976.50 sq.ft.  
90.72 sq.m.

TOTAL EXTERNAL AREA  
452.73 sq.ft.  
42.06 sq.m.



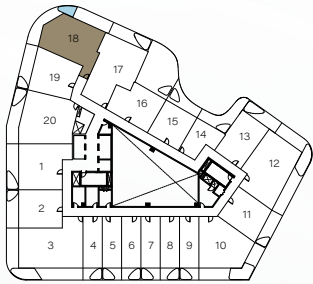
#### DISCLAIMER

All plans and 3D visualizations are based on conceptual design and are shown for illustration purposes only. Unit layouts are indicative, not to scale, and subject to change without prior notice. All dimensions, if shown, are approximate and exclude all wall finishes and construction tolerances. Furnishings & accessories shown are for representation only. The final built-up areas may vary from the official measurements issued by the 3rd party survey company accredited by the Dubai land department. The developer reserves the right to make any changes on any part of this document if & when they deem necessary.

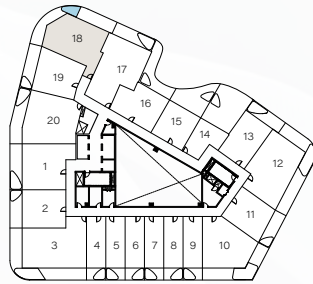
# 3 BEDROOM

UNIT 18 | TYPICAL UNIT TYPE 02

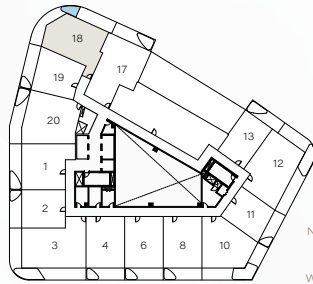
LEVELS 1 - 4 & 11 - 14  
FLOOR PLATE



LEVELS 5 - 10  
FLOOR PLATE



LEVEL 15  
FLOOR PLATE



TOTAL AREA  
1,557.54 sq.ft.  
144.70 sq.m.

TOTAL INTERNAL AREA  
1,030.97 sq.ft.  
95.78 sq.m.

TOTAL EXTERNAL AREA  
526.57 sq.ft.  
48.92 sq.m.



#### DISCLAIMER

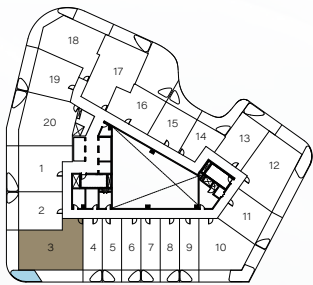
All plans and 3D visualizations are based on conceptual design and are shown for illustration purposes only. Unit layouts are indicative, not to scale, and subject to change without prior notice. All dimensions, if shown, are approximate and exclude all wall finishes and construction tolerances. Furnishings & accessories shown are for representation only. The final built-up areas may vary from the official measurements issued by the 3rd party survey company accredited by the Dubai land department. The developer reserves the right to make any changes on any part of this document if & when they deem necessary.



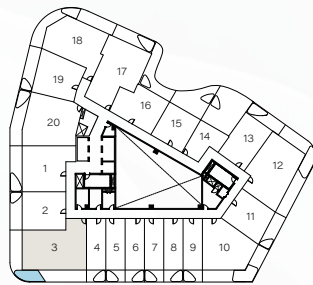
# 4 BEDROOM SKY VILLAS

UNIT 03 | TYPICAL UNIT TYPE 01

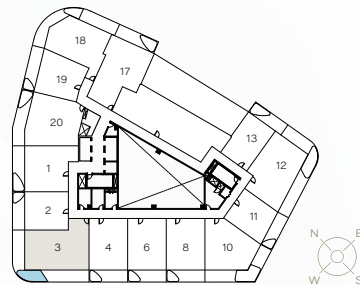
LEVELS 1 - 4 & 11 - 14  
FLOOR PLATE



LEVELS 5 - 10  
FLOOR PLATE



LEVEL 15  
FLOOR PLATE



TOTAL AREA  
1,844.50 sq.ft.  
171.36 sq.m.

TOTAL INTERNAL AREA  
1,212.45 sq.ft.  
112.64 sq.m.

TOTAL EXTERNAL AREA  
632.06 sq.ft.  
58.72 sq.m.



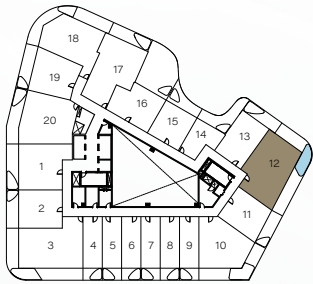
**DISCLAIMER**

All plans and 3D visualizations are based on conceptual design and are shown for illustration purposes only. Unit layouts are indicative, not to scale, and subject to change without prior notice. All dimensions, if shown, are approximate and exclude all wall finishes and construction tolerances. Furnishings & accessories shown are for representation only. The final built-up areas may vary from the official measurements issued by the 3rd party survey company accredited by the Dubai land department. The developer reserves the right to make any changes on any part of this document if & when they deem necessary.

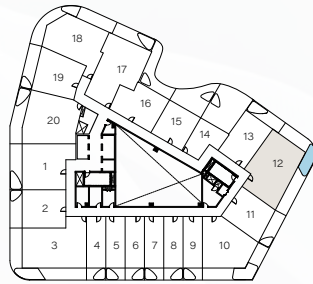
# 4 BEDROOM SKY VILLAS

UNIT 12 | TYPICAL UNIT TYPE 02

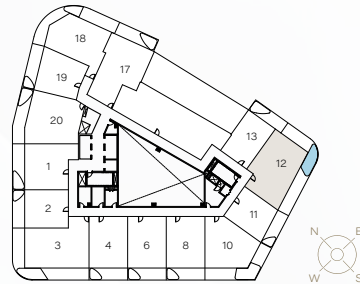
LEVELS 1 - 4 & 11 - 14  
FLOOR PLATE



LEVELS 5 - 10  
FLOOR PLATE



LEVEL 15  
FLOOR PLATE



TOTAL AREA

1,797.90 sq.ft.

167.03 sq.m.

TOTAL INTERNAL AREA

1,191.78 sq.ft.

110.72 sq.m.

TOTAL EXTERNAL AREA

606.12 sq.ft.

56.31 sq.m.



**DISCLAIMER**

All plans and 3D visualizations are based on conceptual design and are shown for illustration purposes only. Unit layouts are indicative, not to scale, and subject to change without prior notice. All dimensions, if shown, are approximate and exclude all wall finishes and construction tolerances. Furnishings & accessories shown are for representation only. The final built-up areas may vary from the official measurements issued by the 3rd party survey company accredited by the Dubai land department. The developer reserves the right to make any changes on any part of this document if & when they deem necessary.



Weybridge Gardens 4, has been meticulously designed and created by British born design and engineering consultancy, LUD Studios.

LUD Studios is dedicated to creating innovative buildings which are contextually inspired, environmentally sustainable and enhance the quality of life for residents.

With a strong focus on design and sustainability, LUD Studios embraces new challenges and the opportunity to re-define design and construction methodologies to create award-winning architectural design and innovative living spaces.



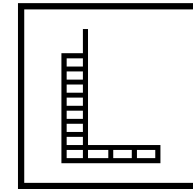


## INTERNATIONAL AWARDS

Established in 2013, LEOS is a renowned luxury property developer with a strong presence in the UK, the UAE and internationally. LEOS is committed to defining the art of living through high-level and innovative design, architecture and development. Experts in residential, commercial and mixed-use real estate, LEOS' professional scope spans land sourcing and analysis, funding, development management, construction, sales and asset management.

Our well-versed and adept team are passionate about quality and on-time delivery and are on hand to deliver best in class projects both locally and internationally. LEOS prides itself on being highly collaborative in building transparent and trustworthy relationships with individuals and businesses to deliver its shared vision and unlock social, economic and commercial value for our stakeholders and clients.





**LEOS**  
INTERNATIONAL



OFFICIAL PARTNER OF  
**AFC BOURNEMOUTH**  
PREMIER LEAGUE