



TRÉPION SERENIQUE
RESIDENCES

Serene. Unique. Yours.

FAKHRUDDIN
PROPERTIES



TRÉPPAN LIVING®
BRANDED RESIDENCES



Disclaimer: All information, sizes, floor plans, building views, apartment views, layouts, interiors, visuals and details are for illustrative purposes only and are subject to change without prior notice.

DUBAI ISLANDS

Ground Floor + 2 Podium Floors + Twin Towers of 12 Floors

2 bedroom & 3 bedroom Apartments | 53 Amenities spread over 3 floors



FAKHRUDDIN
PROPERTIES

TREPPAN
SERENIQUE
RESIDENCES



LOCATION HIGHLIGHTS

90 seconds to the Beach | 2 mins to Beach Cafes, Watersports & Adventure Activities | 2 mins to Beachfront Resorts
5 mins to Golf Course | 7 mins to Marina | 20 mins to Dubai International Airport
23 mins to Dubai Downtown | 25 mins to Business Bay



PROJECT DETAILS



KEY HIGHLIGHTS

Hi-Tech Biohacking Amenities

Resort Like Lifestyle with 53 Amenities

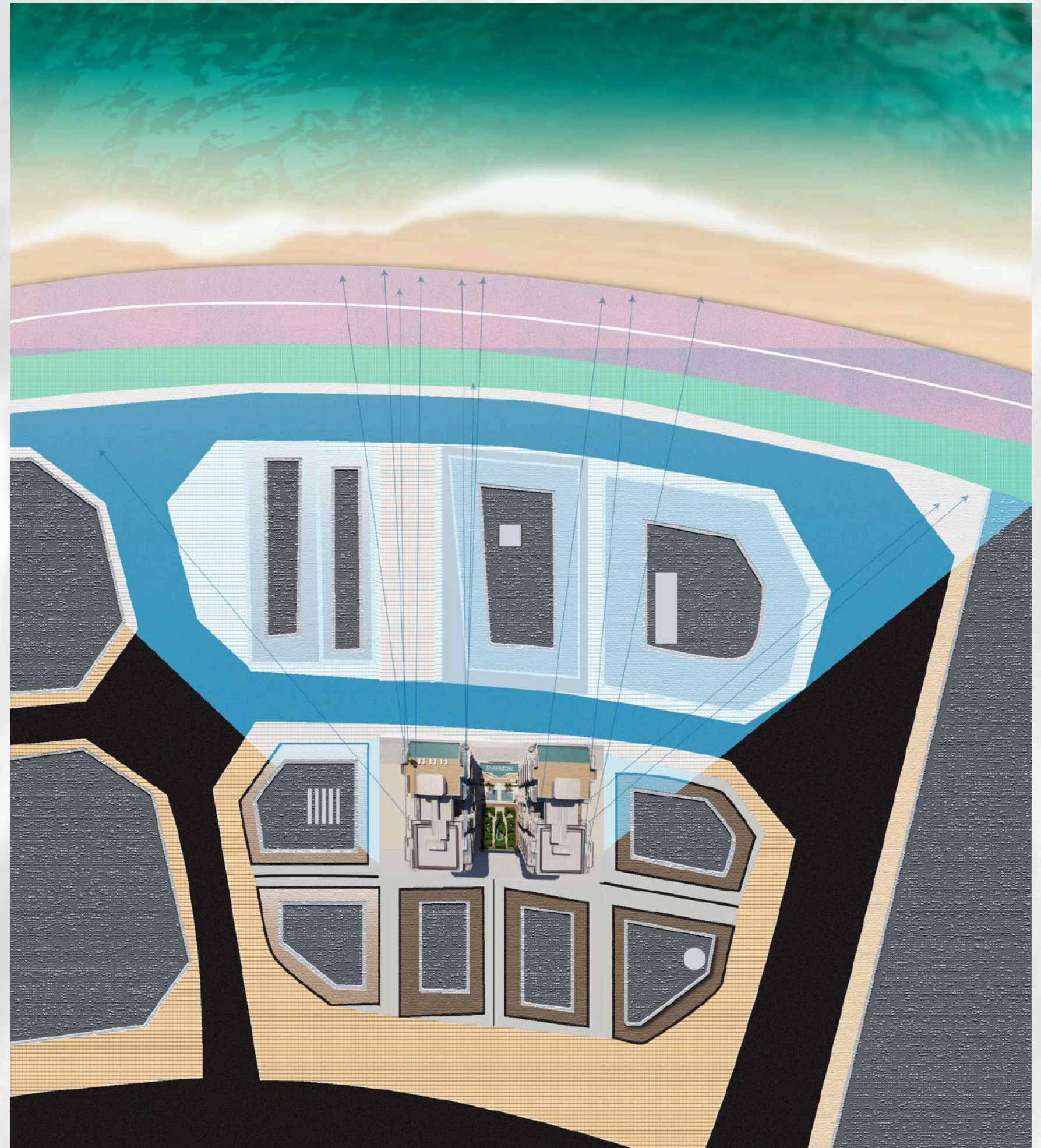
Seaview & Golf Course View Apartments

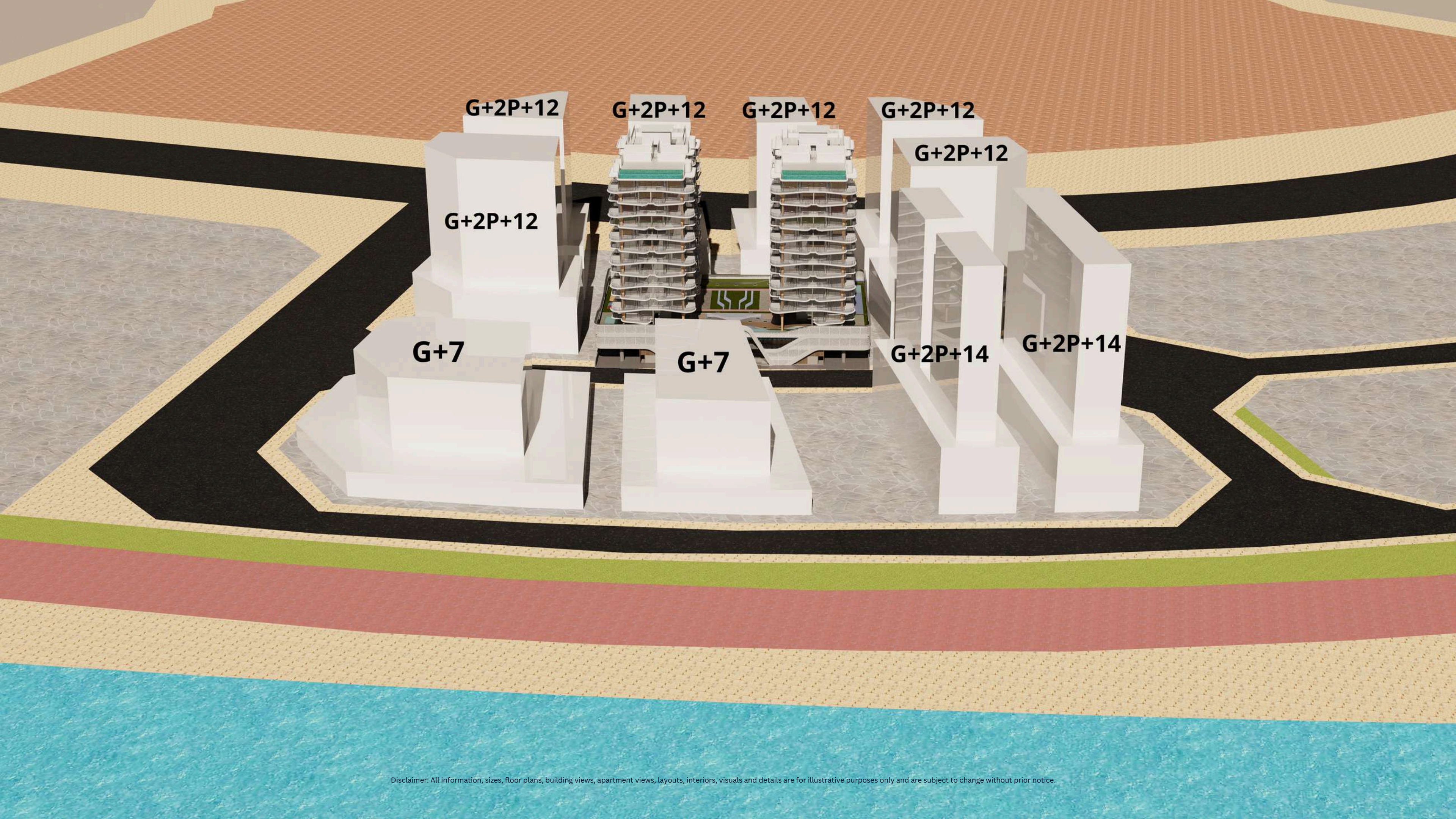
Treppan Living Features

Rooftop Infinity Pool with Seaview &
Golf Course View

SENSATIONAL SEAVIEWS

FOR ALL RESIDENTS





G+2P+12

G+2P+12

G+2P+12

G+2P+12

G+2P+12

G+2P+12

G+7

G+7

G+2P+14

G+2P+14

UNIT MIX

164 UNITS

2 BEDROOM APARTMENTS

4 Types | 70 Units in each Tower - Total 140 Units

Open Seaview from 6th Floor Onwards | corner units with jacuzzi

3 BEDROOM

2 Types | 12 Units in each Tower - Total 24 Units

Uninterrupted Seaview & Golf View | corner units with jacuzzi

2 BEDROOMS APARTMENTS

Sizes

980 to 1483 sqft | 1st to 9th Floor | Seaview & Golf Course View
from 6th to 9th floor | Corner Units with Jacuzzi

FLOORS: 2, 4, 6, & 8

TYPE A : Size: 1483 sq ft | **TYPE C** : Size: 1414 sq ft | **Type F** : Size: 980 sq ft

FLOORS: 1, 3, 5, 7 & 9

TYPE B : Size: 1364 sq ft | **TYPE D** : Size: 1326 sq ft | **Type E** : Size: 1036 sq ft

3-BEDROOM APARTMENTS

Sizes

1808 to 1902 sqft | 10th to 12th Floor | Course View

Open Seaview & Golf

FLOORS: 10th & 12th

TYPE A & TYPE C - Size: 1832 to 1902 sq ft

FLOORS: 11th

TYPE B & TYPE D - Size: 1808 to 1856 sq ft

 smeg

 BOSCH

antoniolupi

BRANDS. FITTINGS & FINISHES

Kitchen appliances from Smeg & Bosch

Furniture inspired by Italian design

Bathroom fittings from Antoniolupi

Apartments designed by a British designer

Chandelier in lobby from Vargov Design

AMENITIES

WORLD OF AMENITIES

53 carefully curated amenities | Podium floor with meticulously designed zones

Advanced biohacking facilities to elevate your vitality | Nature-centric spaces

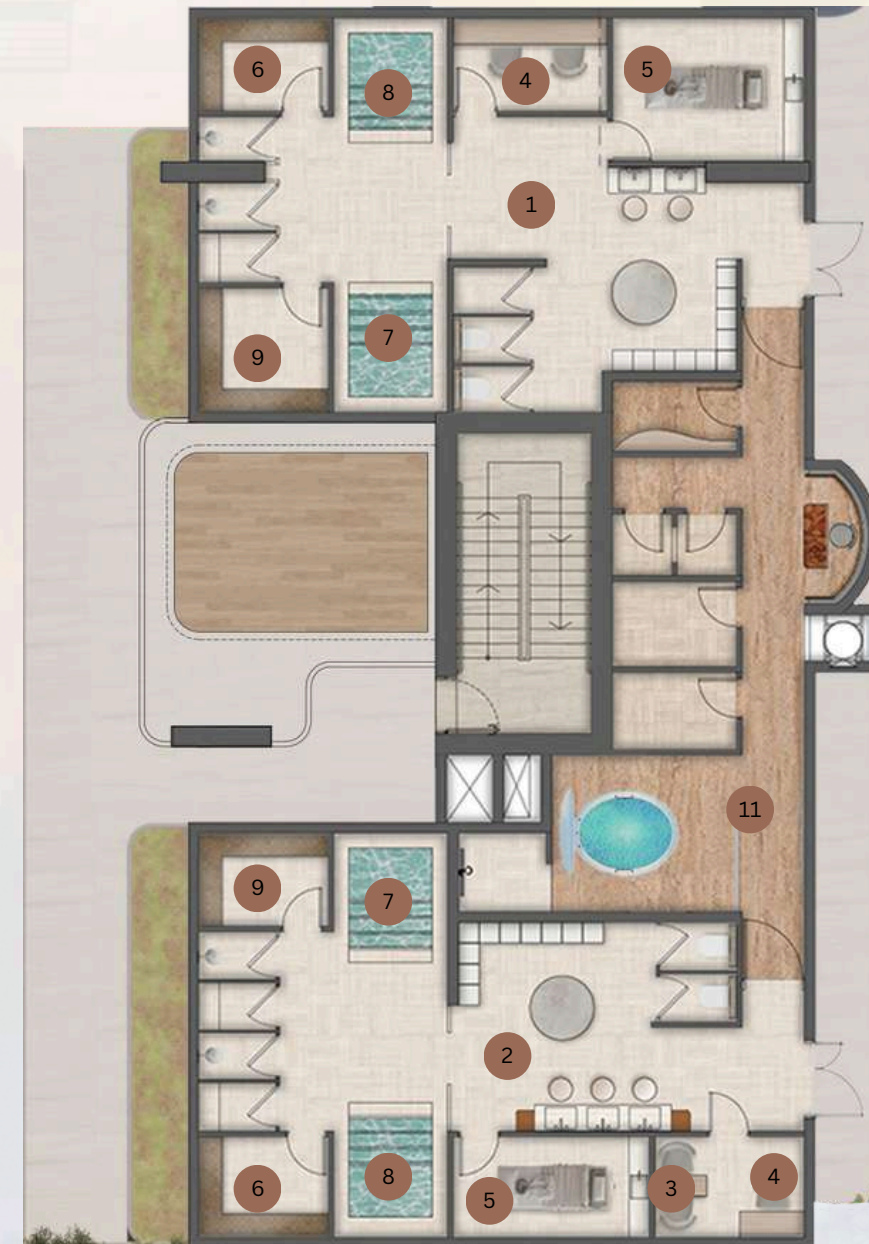
Social hubs | Exclusive tranquil spaces | Rooftop seaview lounge

PODIUM FLOOR



WELLNESS RETREAT

1. Male Spa | 2. Female Spa | 3. Nail Spa | 4. Beauty Salon
5. Massage Bed | 6. Steam Room | 7. Hot Plunge | 8. Cold Plunge
9. Himalayan Salt Brick Sauna | 10. Meditation Zone | 11. The Biohacking Zone



THE BIOHACKING CORNER

- 1. Red Light Therapy
- 2. Hyperbaric Oxygen Therapy
- 3. Cryotherapy
- 4. Floatation therapy



RED LIGHT THERAPY



Disclaimer: All information, sizes, floor plans, building views, apartment views, layouts, interiors, visuals and details are for illustrative purposes only and are subject to change without prior notice.

HYPERBARIC OXYGEN THERAPY



Disclaimer: All information, sizes, floor plans, building views, apartment views, layouts, interiors, visuals and details are for illustrative purposes only and are subject to change without prior notice.

CRYOTHERAPY



Disclaimer: All information, sizes, floor plans, building views, apartment views, layouts, interiors, visuals and details are for illustrative purposes only and are subject to change without prior notice.

FLOATATION THERAPY



Disclaimer: All information, sizes, floor plans, building views, apartment views, layouts, interiors, visuals and details are for illustrative purposes only and are subject to change without prior notice.



NATURE'S EMBRACE

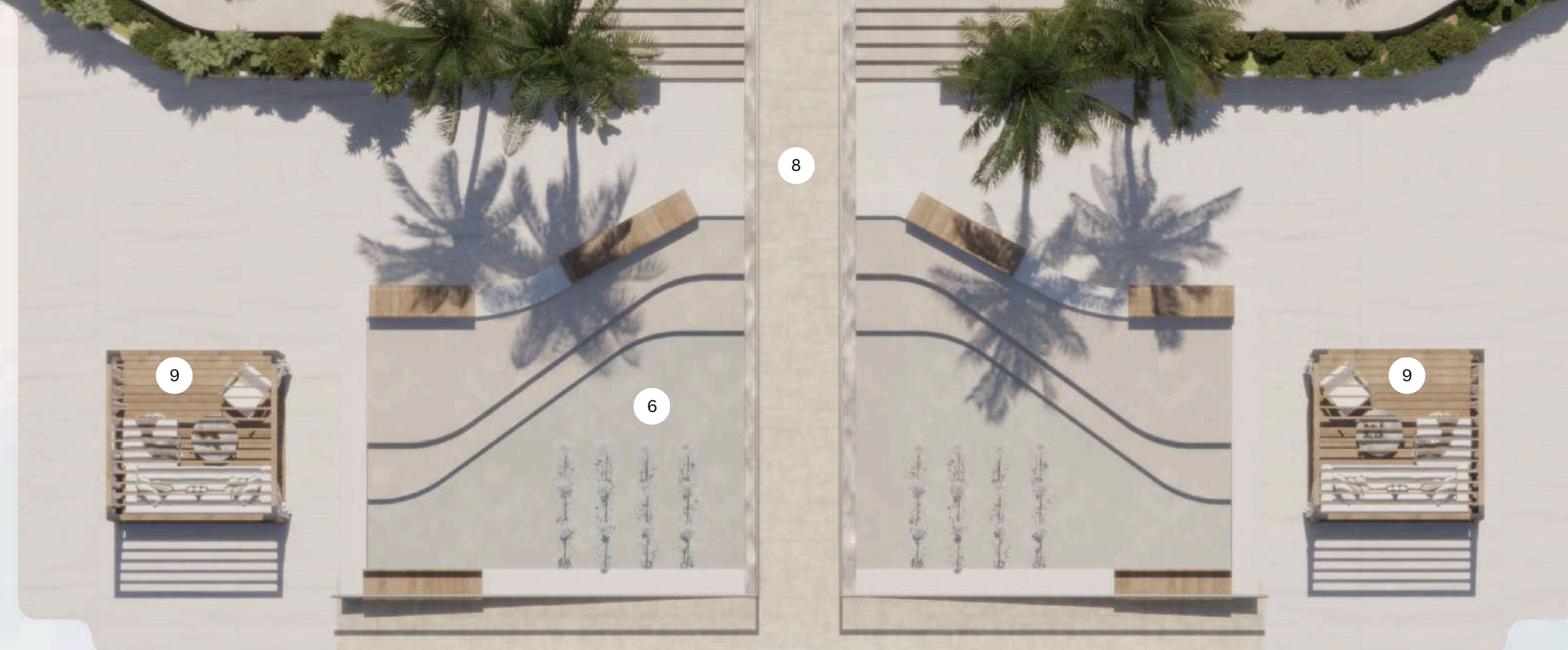
- 1. Bamboo Oxygen Park | 2. Koi Pond | 3. Green Walkway
- 4. Jogging Track | 5. Radiant cooled meditation pods





AQUATIC LEISURE

- 1. Infinity Swimming Pool | 2. Pool Loungers | 3. Aqua Gym
- 4. Open Shower | 5. Poolside Deck | 6. Water Fountain
- 7. Sunken Seating | 8. Boardwalk bridge | 9. Cabana seating



KIDS' ZONE

- 1. Kids' Pool
- 2. Water Slide
- 3. Splash Pool
- 4. Kids' Play Area
- 5. Sand Pit playground
- 6. Skating loop
- 7. Kids' Adventure wall



ACTIVE LIFESTYLE & FITNESS

Indoor Gym | Outdoor Gym | Aqua Gym

Adult Anchor Crag | Jogging Track

Mini Golf Court





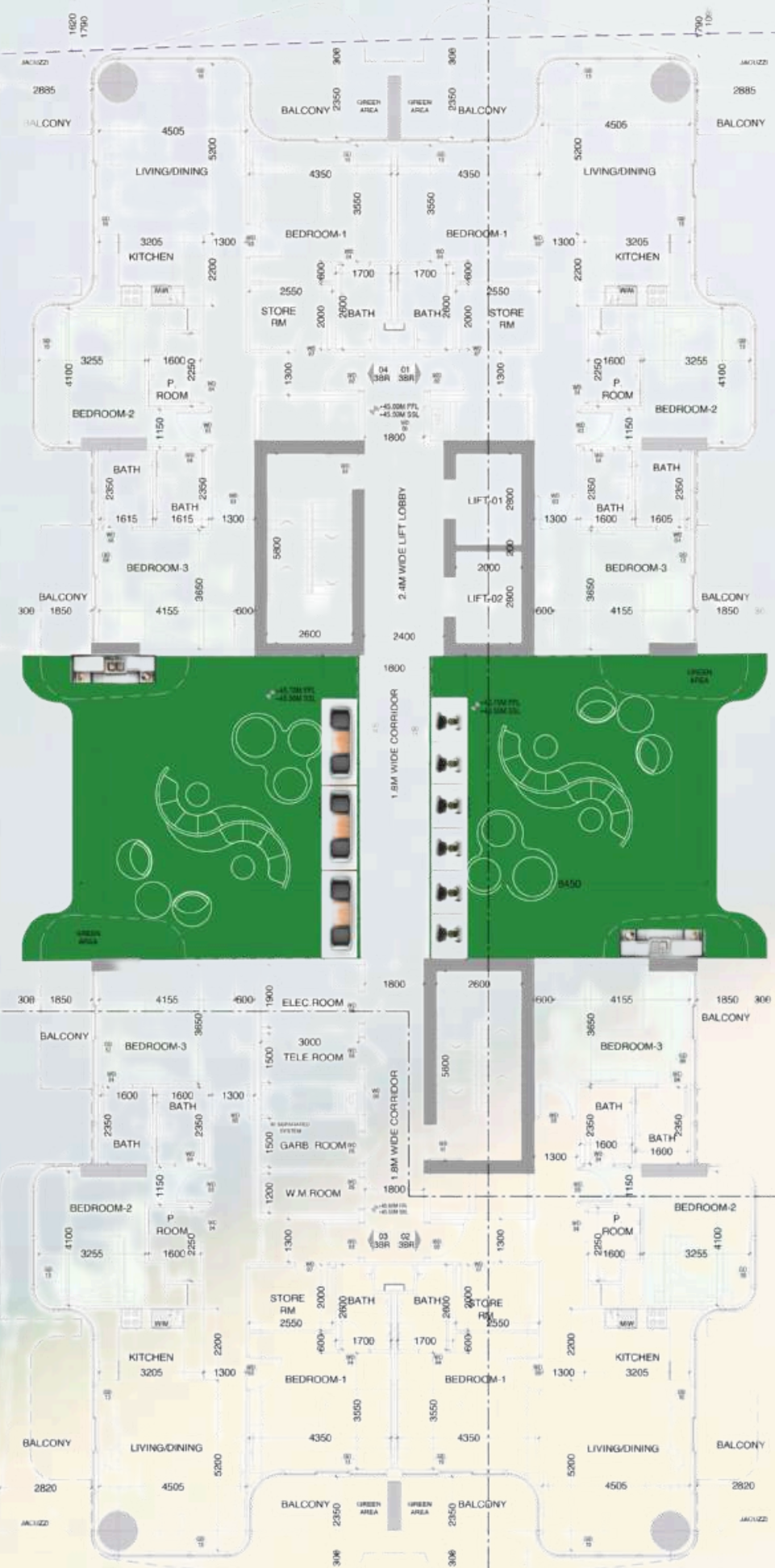
SOCIAL SPACES

- 1. Green House Café
- 2. Multi-Purpose Hall
- 3. BBQ pits
- 4. Amphitheater
- 5. Outdoor Cinema
- 6. Outdoor Party Deck



10TH FLOOR

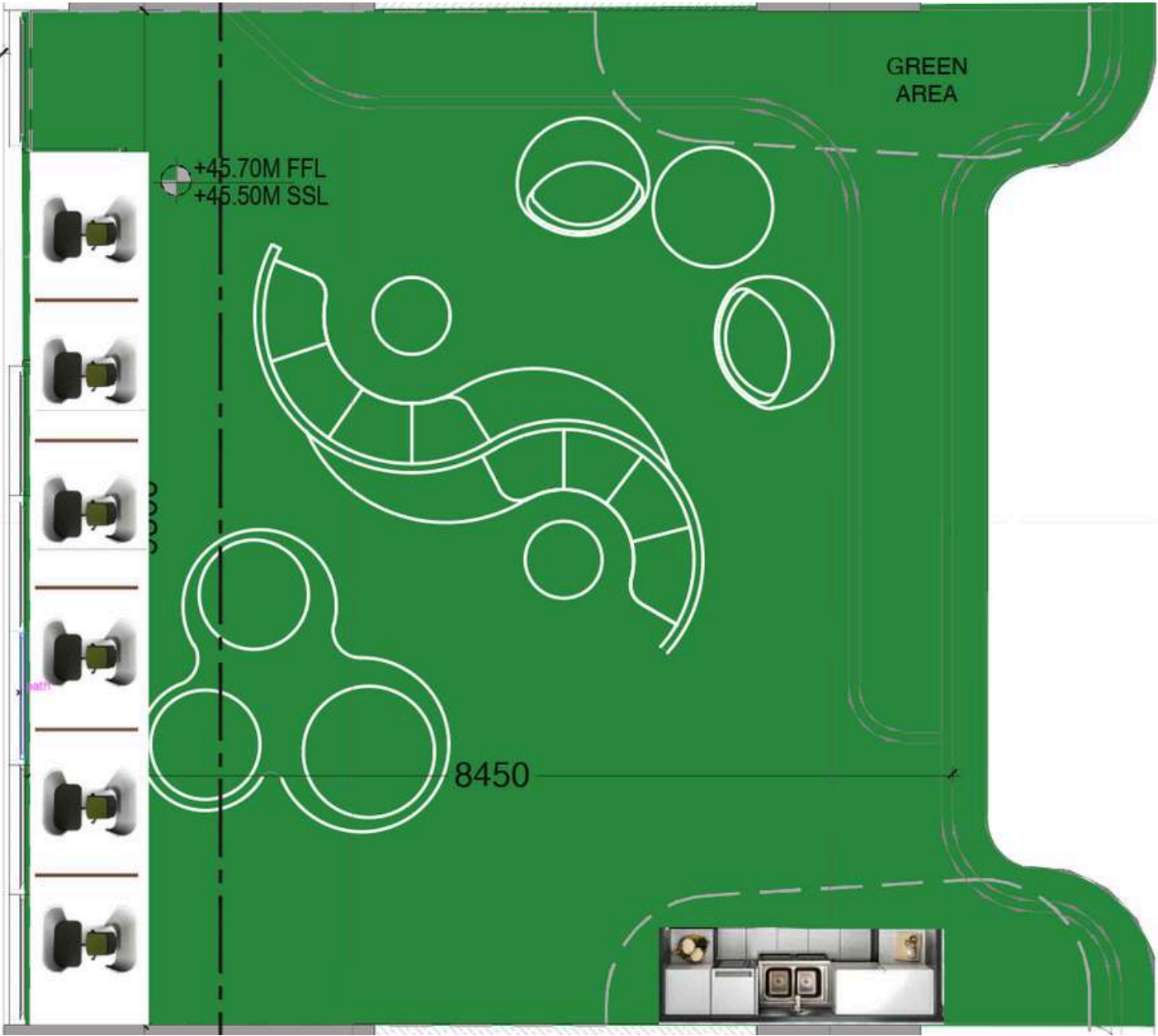
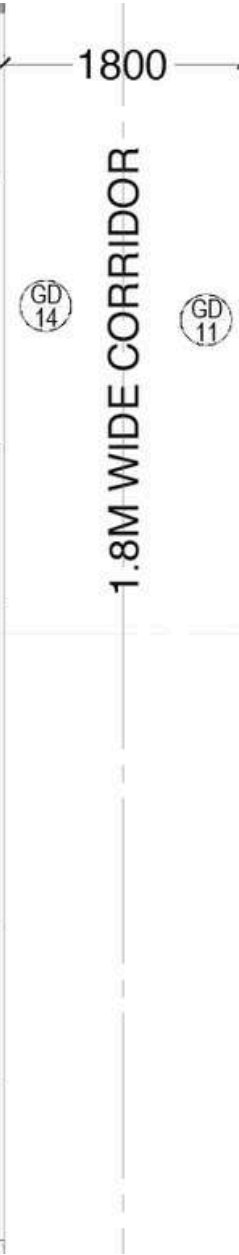
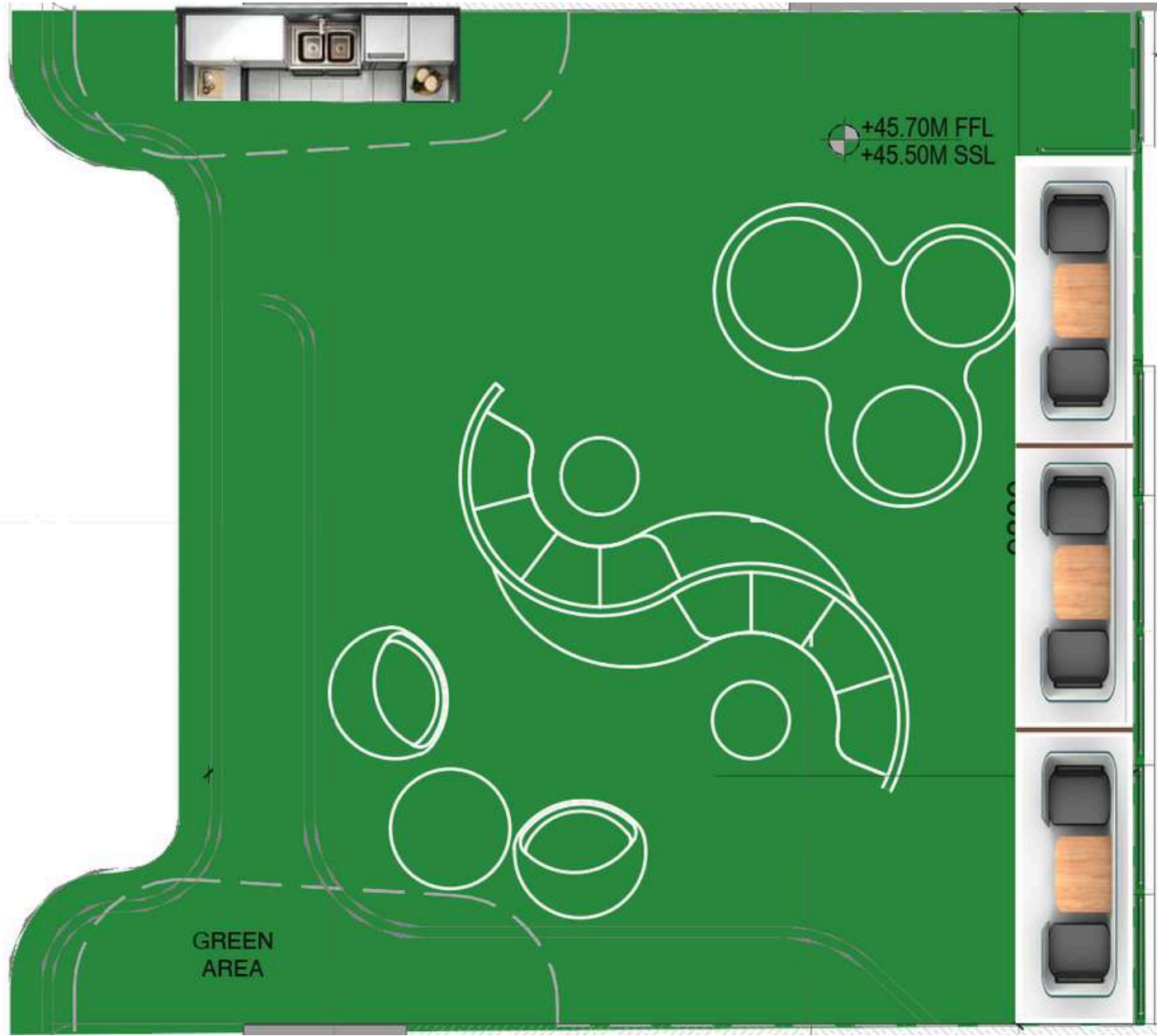
BUILDING SETBACK
5000



00
SETBACK



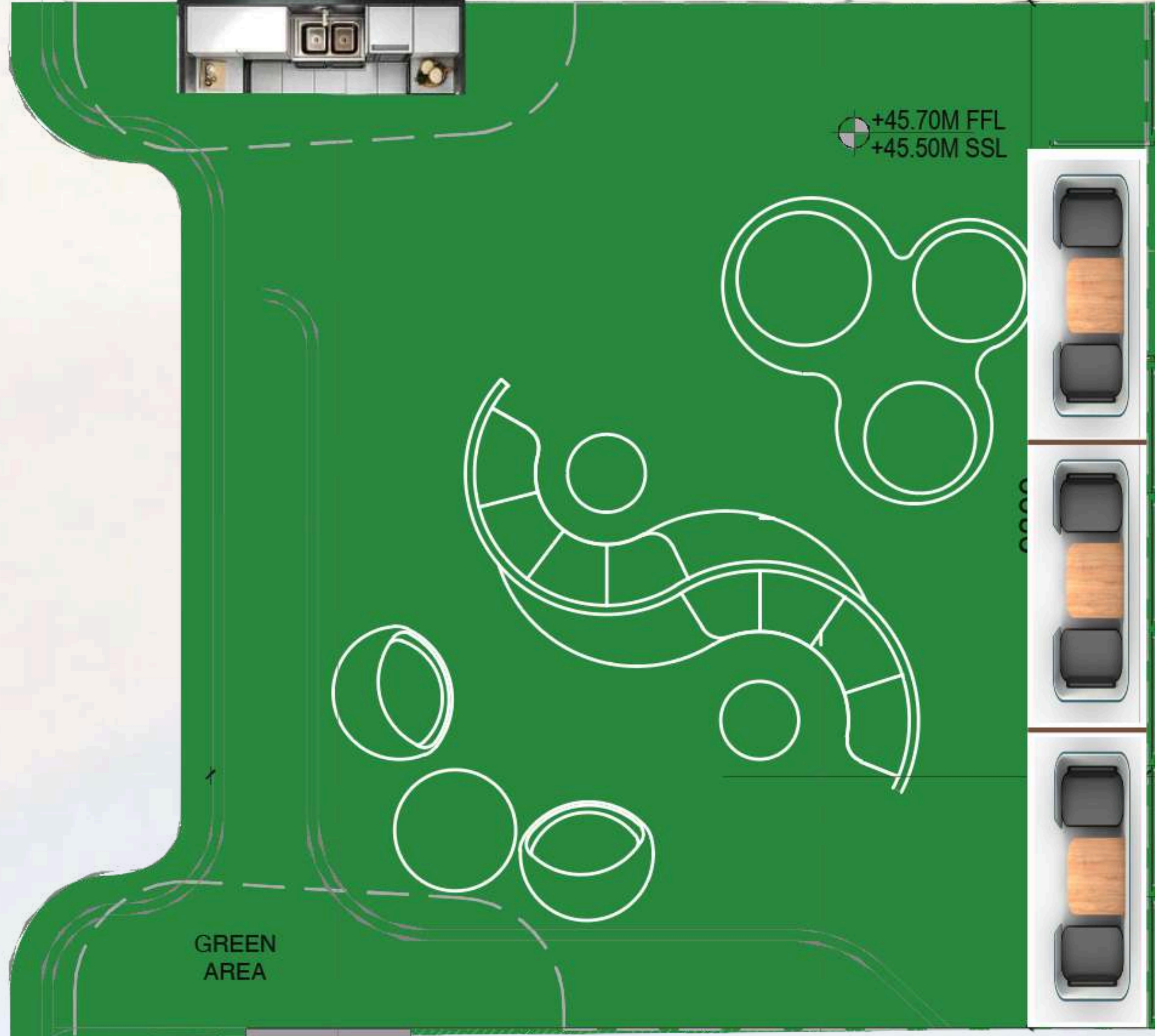
BUILD
1





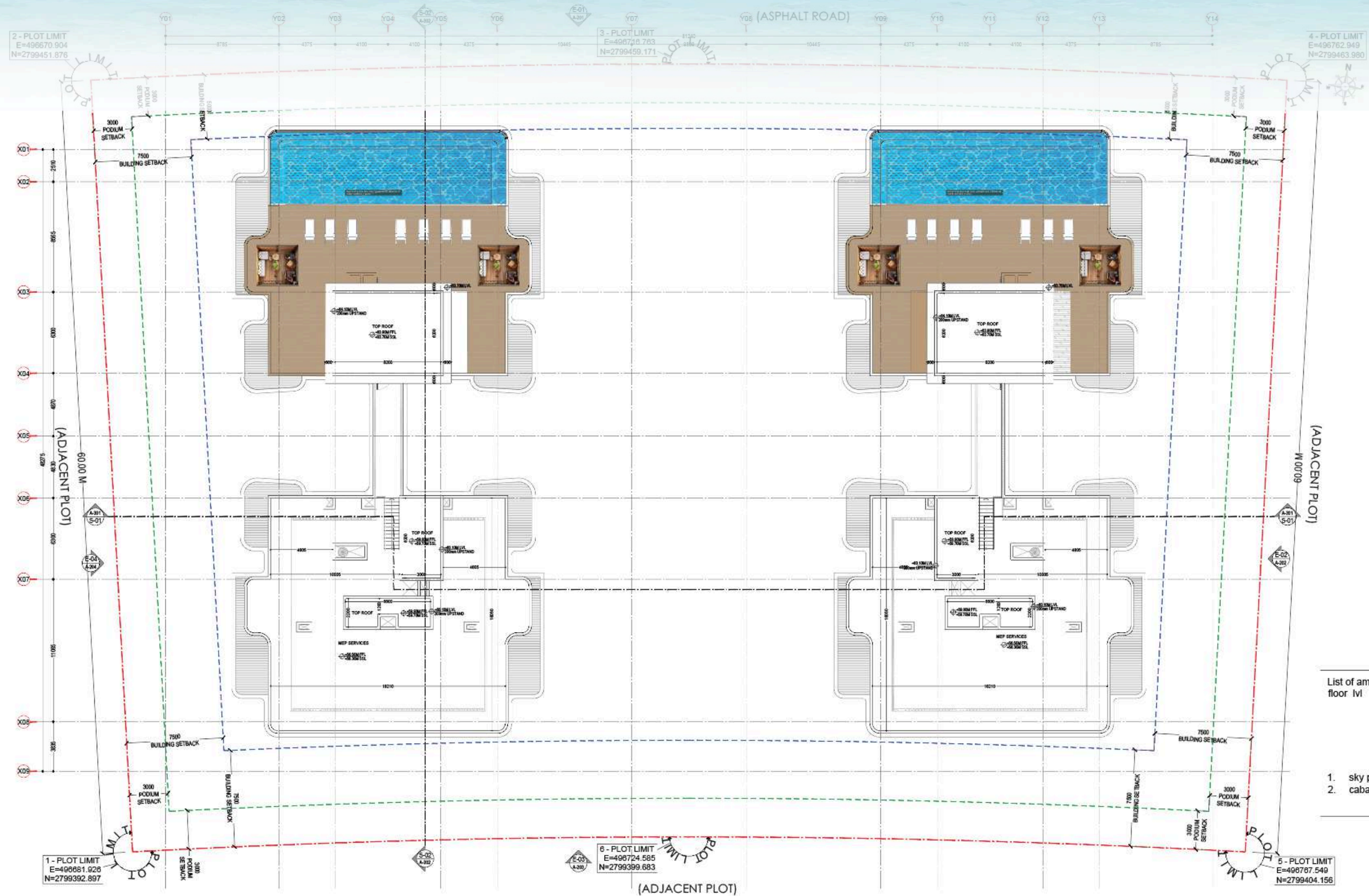
TRANQUIL SANCTUARY

Private courtyard | Grill station | Open Kitchen
Google Beam Enabled Working pods | Meeting Pods



ROOFTOP

SEA VIEW

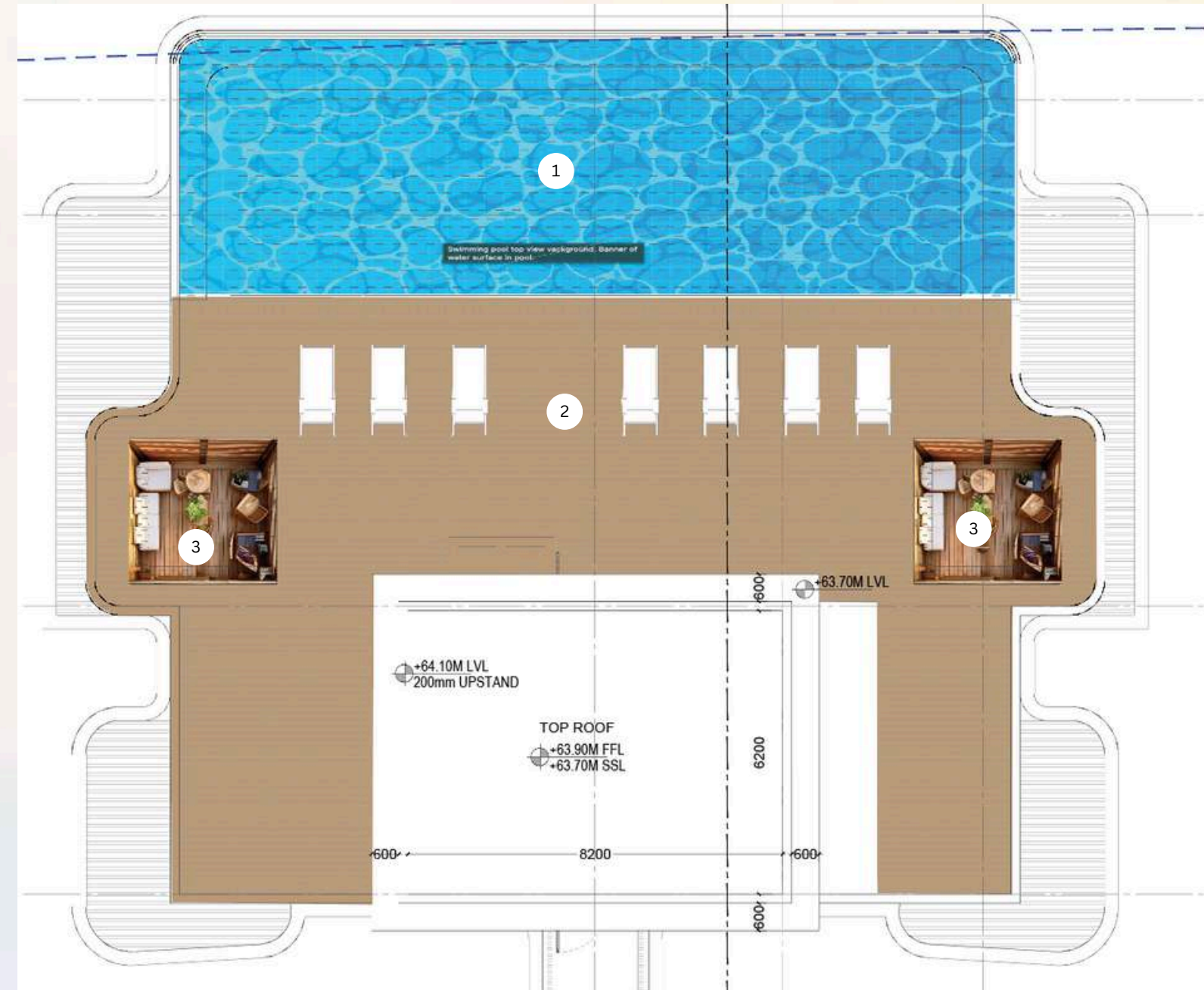


List of amenities-Roof floor lvl

1. sky pool
2. cabanas

SEAVIEW LOUNGE

- 1. Seaview Infinity Pool
- 2. Sundeck lounge
- 3. Cabana seating



EARLY SNEAK PEEK

GRAND ENTRANCE LOBBY



SERENIQUE
RESIDENCES





MAIN LOBBY >

54

2

2

BEDROOM
APARTMENTS













3

BEDROOM
APARTMENTS













HEALTH CLUB







10 20 30 40 50 60 70 80



SPA





ML SALON

SANCTUARY



