

FIRST FLOOR

1. Pool	2,897.87 sq. ft.
2. Indoor Gym	796 sq. ft.
3. Outdoor Gym	484.3 sq. ft.
4. Indoor Zen Garden	828 sq. ft.
5. Outdoor Zen Garden	484 sq. ft.
6. Indoor Lounge	2,421 sq. ft.
7. Outdoor Lounge	1,130 sq. ft.
8. Indoor Kids Area	645 sq. ft.
9. Outdoor Kids Area	1,560 sq. ft.
10. Padel Court	2,152 sq. ft.
11. Outdoor Cinema	1,345 sq. ft.
12. Female Spa	442.8 sq. ft.
13. Male Spa	442.8 sq. ft.
14. Chess Game	372 sq. ft.
15. Seating Area	
16. Sunken Seating	
17. Bar	
18. Cabanas	
19. Sun Beds	

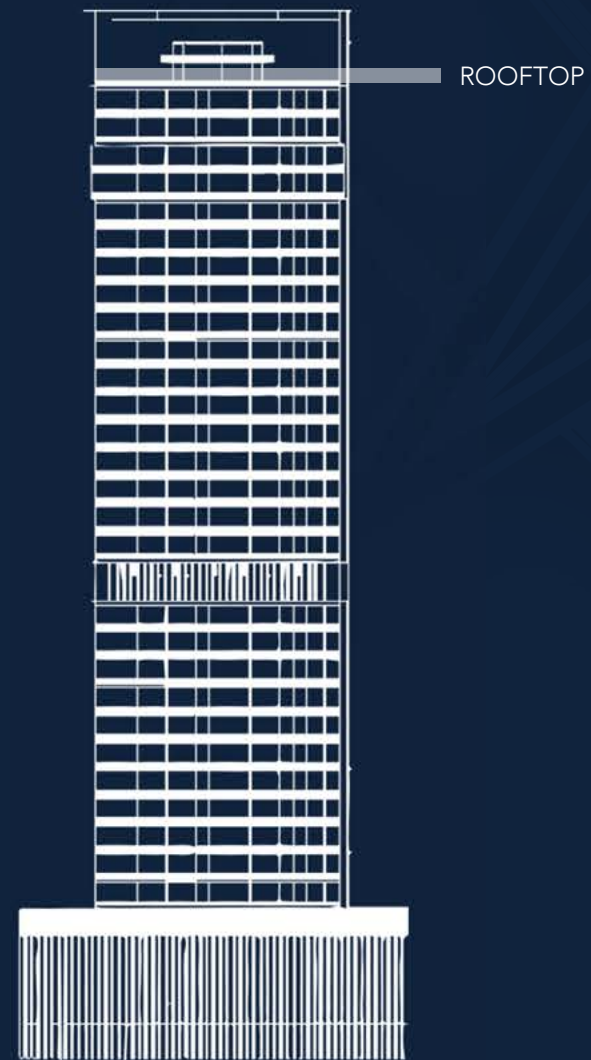


ROOFTOP

Port Rashid & Dubai Maritime Promenade



- 1. Barbecue & Picnic Area
- 2. Sky Garden
- 3. Garden Seating
- 4. Seating Area



Neighbourhood



Neighbourhood & Dubai Skyline

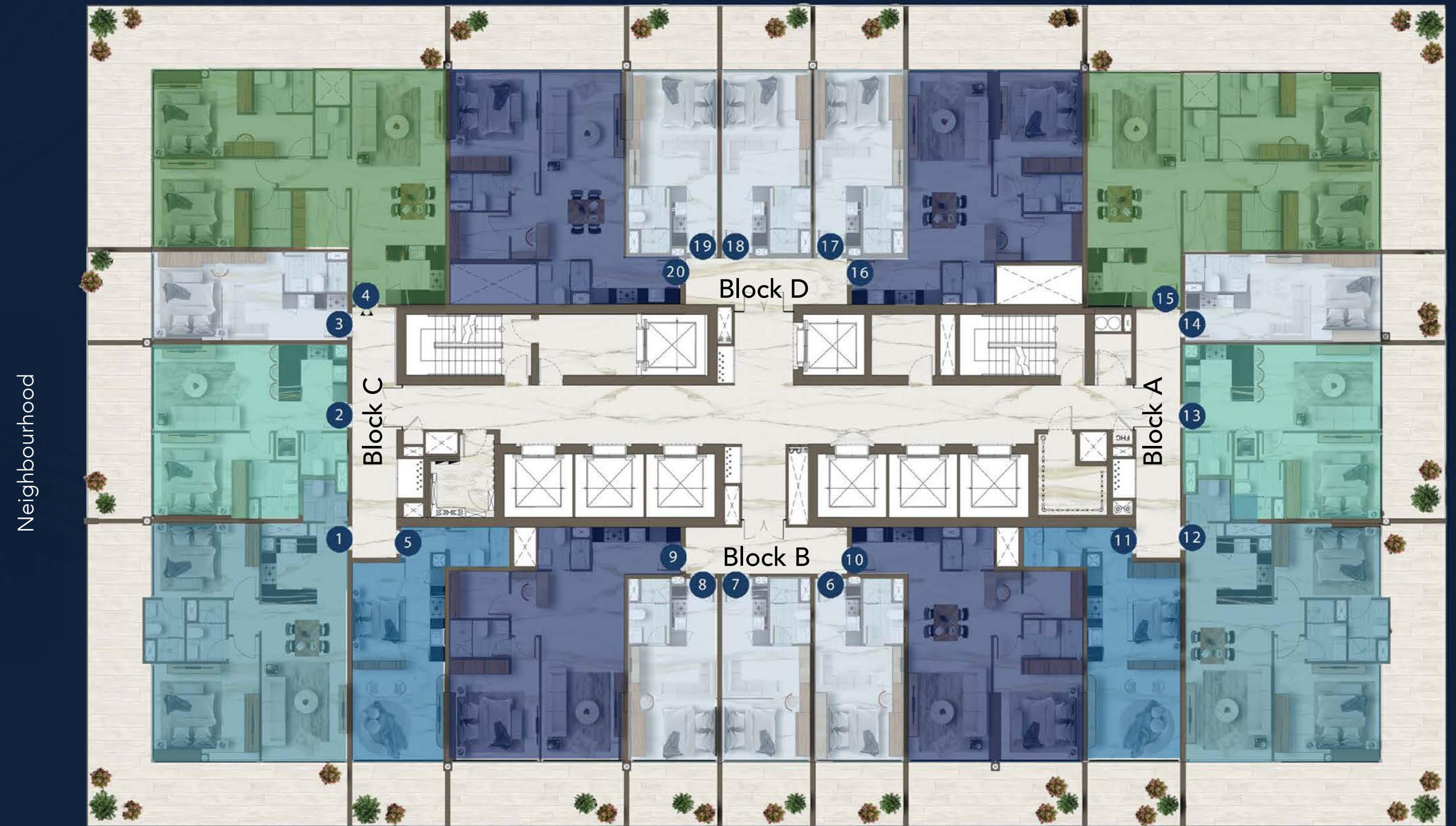
Dubai Skyline, Amenities & Seascape

TYPICAL - 2ND TO 30TH FLOOR



Studio	8 units	●
Studio L	2 units	●
1 Bedroom	2 units	●
1 Bedroom Plus	4 units	●
2 Bedroom	2 units	●
2 Bedroom Plus	2 units	●

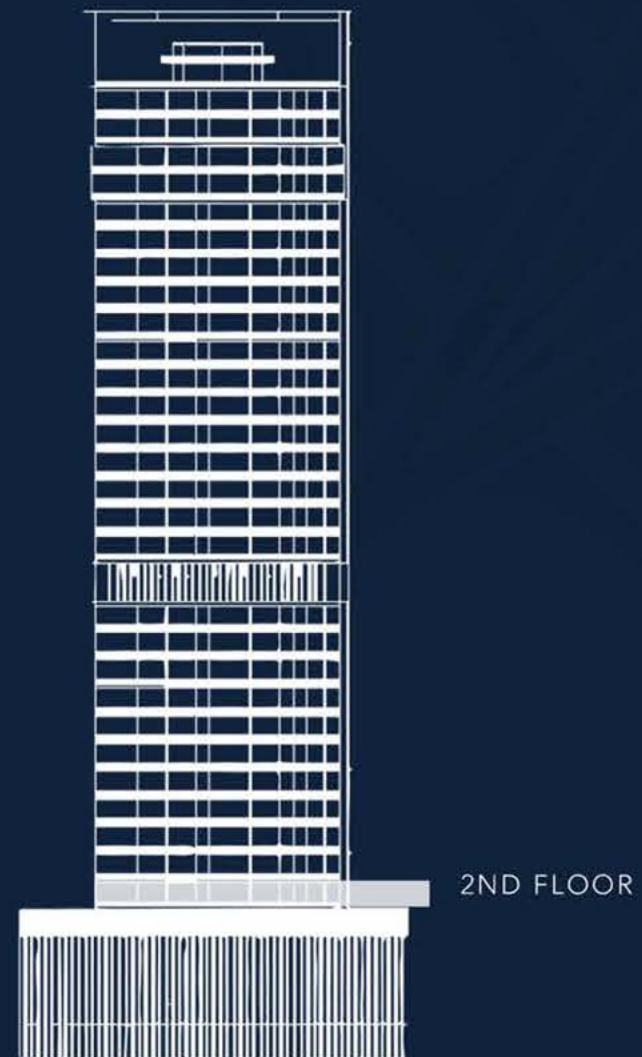
Port Rashid & Dubai Maritime Promenade



Neighbourhood

Neighbourhood & Dubai Skyline

Dubai Skyline, Amenities & Seascape

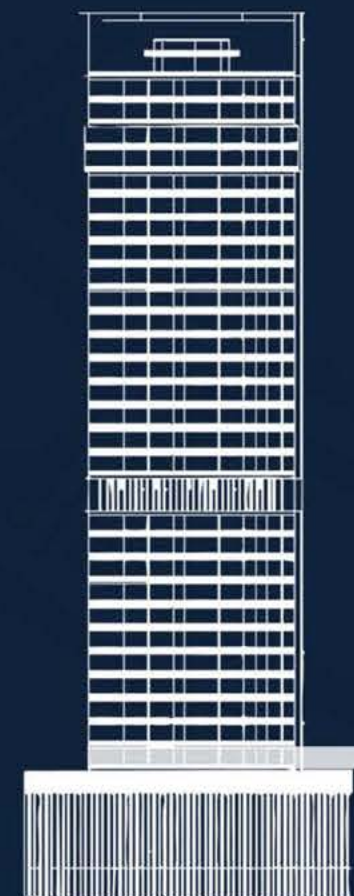


2ND FLOOR

2ND FLOOR | BLOCK - C | 2-1 | 2 BR

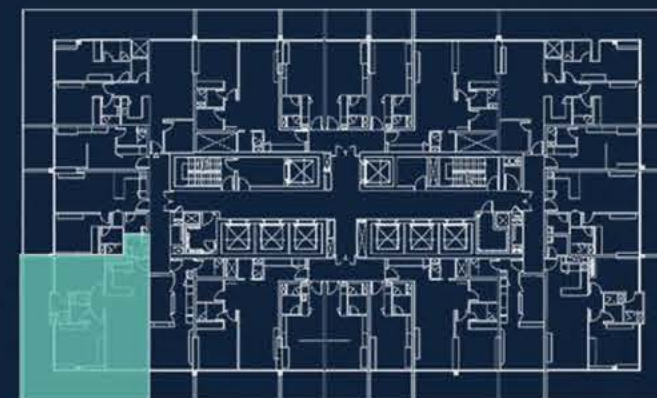
Suite Area	871.01 sq. ft.
Balcony Area	591.47 sq. ft.
Total Area	1462.49 sq. ft.

1 LIVINGROOM	6.35*3.50 sq. m.
2 BEDROOM	4.30*3.90 sq. m.
3 BEDROOM	4.30*3.02 sq. m.
4 BATH	2.50*1.60 sq. m.
5 BATH	2.50*1.60 sq. m.
6 KITCHEN	2.70*2.25 sq. m.
7 POWDER ROOM	1.80*1.70 sq. m.
8 BALCONY	12.40*2.65 sq. m.
9 BALCONY	8.00*2.65 sq. m.



2ND FLOOR

Port Rashid & Dubai Maritime Promenade



Neighbourhood

Dubai Skyline, Amenities & Seascape

Neighbourhood & Dubai Skyline

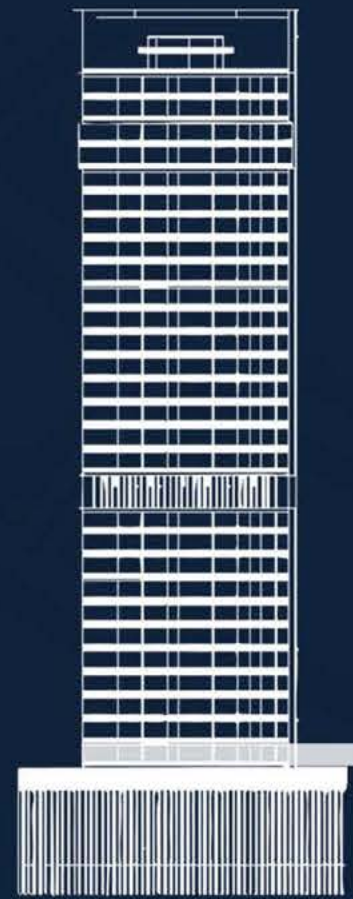


FLOOR PLANS:
 1. All dimensions are provided in both imperial and metric units and measured from finish to finish, excluding construction tolerances.
 2. All materials, dimensions, and drawings are approximate.
 3. Information is subject to change without notice at the developer's absolute discretion.
 4. Actual areas may vary from the stated areas.
 5. Drawings are not to scale.

2ND FLOOR | BLOCK - C | 2-2 | 1BR

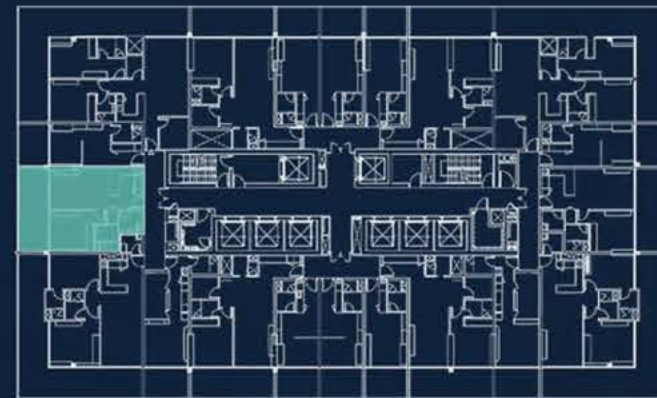
Suite Area	583.08 sq. ft.
Balcony Area	208.92 sq. ft.
Total Area	792.00 sq. ft.

1 LIVINGROOM	5.10*3.42 sq. m.
2 BEDROOM	3.78*3.42 sq. m.
3 BATH	2.30*2.00 sq. m.
4 POWDER	1.90*1.70 sq. m.
5 W.M.	1.10*0.90 sq. m.
6 KITCHEN	2.80*2.30 sq. m.
7 BALCONY	7.10*2.65 sq. m.



2ND FLOOR

Port Rashid & Dubai Maritime Promenade



Neighbourhood

Neighbourhood & Dubai Skyline

Dubai Skyline, Amenities & Seascape



FLOOR PLANS:
 1. All dimensions are provided in both imperial and metric units and measured from finish to finish, excluding construction tolerances.
 2. All materials, dimensions, and drawings are approximate.
 3. Information is subject to change without notice at the developer's absolute discretion.
 4. Actual areas may vary from the stated areas.
 5. Drawings are not to scale.

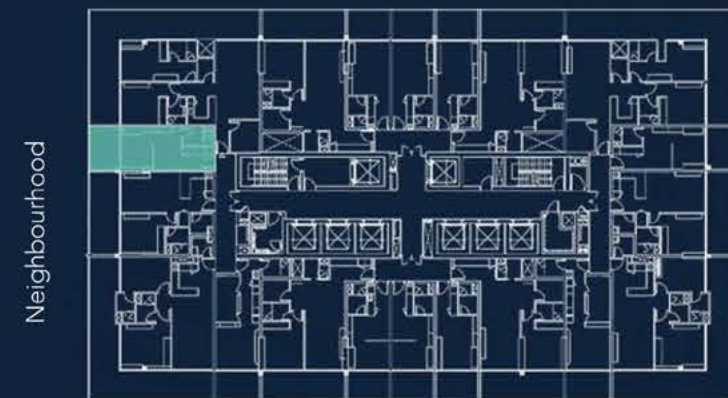
2ND FLOOR | BLOCK - C | 2-3 | ST

Suite Area	320.97 sq. ft.
Balcony Area	108.82 sq. ft.
Total Area	429.80 sq. ft.

1 LIVING AREA	5.25*3.52 sq. m.
2 KITCHEN	2.65*1.90 sq. m.
3 BATH	2.55*1.60 sq. m.
4 BALCONY	3.60*2.65 sq. m.



Port Rashid & Dubai Maritime Promenade



Dubai Skyline, Amenities & Seascape



FLOOR PLANS:
 1. All dimensions are provided in both imperial and metric units and measured from finish to finish, excluding construction tolerances.
 2. All materials, dimensions, and drawings are approximate.
 3. Information is subject to change without notice at the developer's absolute discretion.
 4. Actual areas may vary from the stated areas.
 5. Drawings are not to scale.

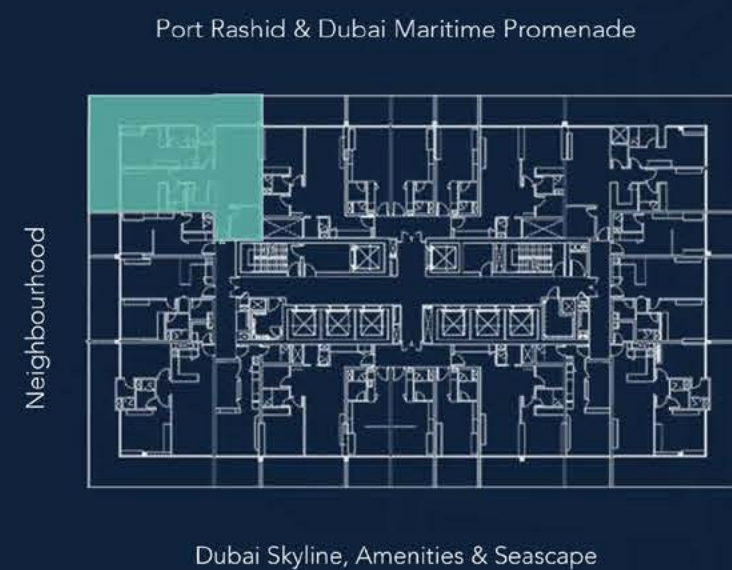
2ND FLOOR | BLOCK - C | 2-4 | 2 BR

Suite Area	1021.06 sq. ft.
Balcony Area	633.77 sq. ft.
Total Area	1654.84 sq. ft.

1 LIVINGROOM	7.03*3.80 sq. m.
2 BEDROOM	4.00*3.50 sq. m.
3 BATH	2.50*1.70 sq. m.
4 BEDROOM	3.90*3.60 sq. m.
5 BATH	2.30*1.60 sq. m.
6 KITCHEN	2.50*2.40 sq. m.
7 POWDER	2.00*1.40 sq. m.
8 STORE	2.30*2.30 sq. m.
9 BALCONY	7.25*2.60 sq. m.
10 BALCONY	14.60*2.55 sq. m.



2ND FLOOR

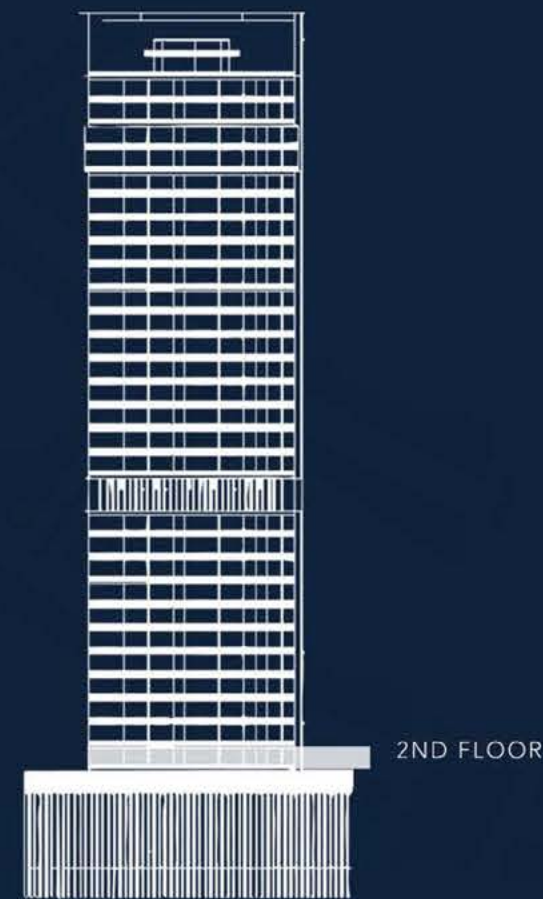


FLOOR PLANS:
 1. All dimensions are provided in both imperial and metric units and measured from finish to finish, excluding construction tolerances.
 2. All materials, dimensions, and drawings are approximate.
 3. Information is subject to change without notice at the developer's absolute discretion.
 4. Actual areas may vary from the stated areas.
 5. Drawings are not to scale.

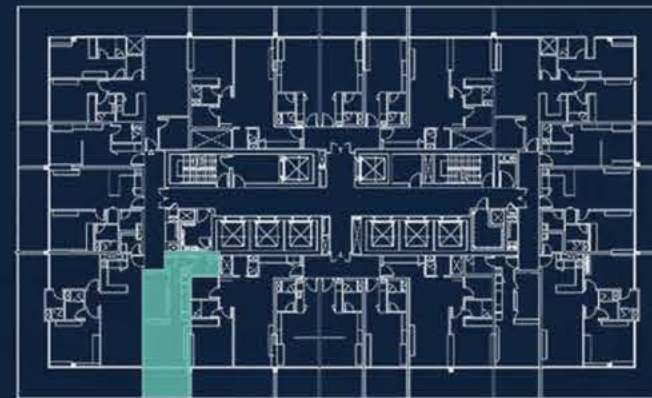
2ND FLOOR | BLOCK - C | 2-5 | ST

Suite Area	435.07 sq. ft.
Balcony Area	114.63 sq. ft.
Total Area	549.71 sq. ft.

1 LIVING AREA	3.72*3.68 sq. m.
2 BEDROOM	4.35*2.15 sq. m.
3 KITCHEN	3.78*1.66 sq. m.
4 BATH	2.40*1.60 sq. m.
5 BALCONY	3.80*2.65 sq. m.



Port Rashid & Dubai Maritime Promenade



Neighbourhood

Neighbourhood & Dubai Skyline

Dubai Skyline, Amenities & Seascape



FLOOR PLANS:
 1. All dimensions are provided in both imperial and metric units and measured from finish to finish, excluding construction tolerances.
 2. All materials, dimensions, and drawings are approximate.
 3. Information is subject to change without notice at the developer's absolute discretion.
 4. Actual areas may vary from the stated areas.
 5. Drawings are not to scale.

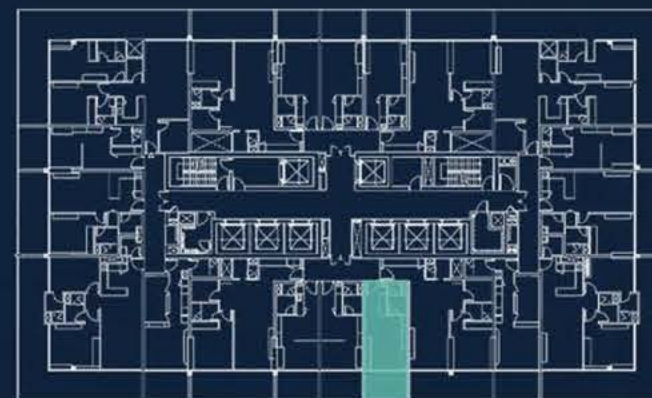
2ND FLOOR | BLOCK - B | 2 - 6 | ST

Suite Area	300.31 sq. ft.
Balcony Area	109.46 sq. ft.
Total Area	409.78 sq. ft.

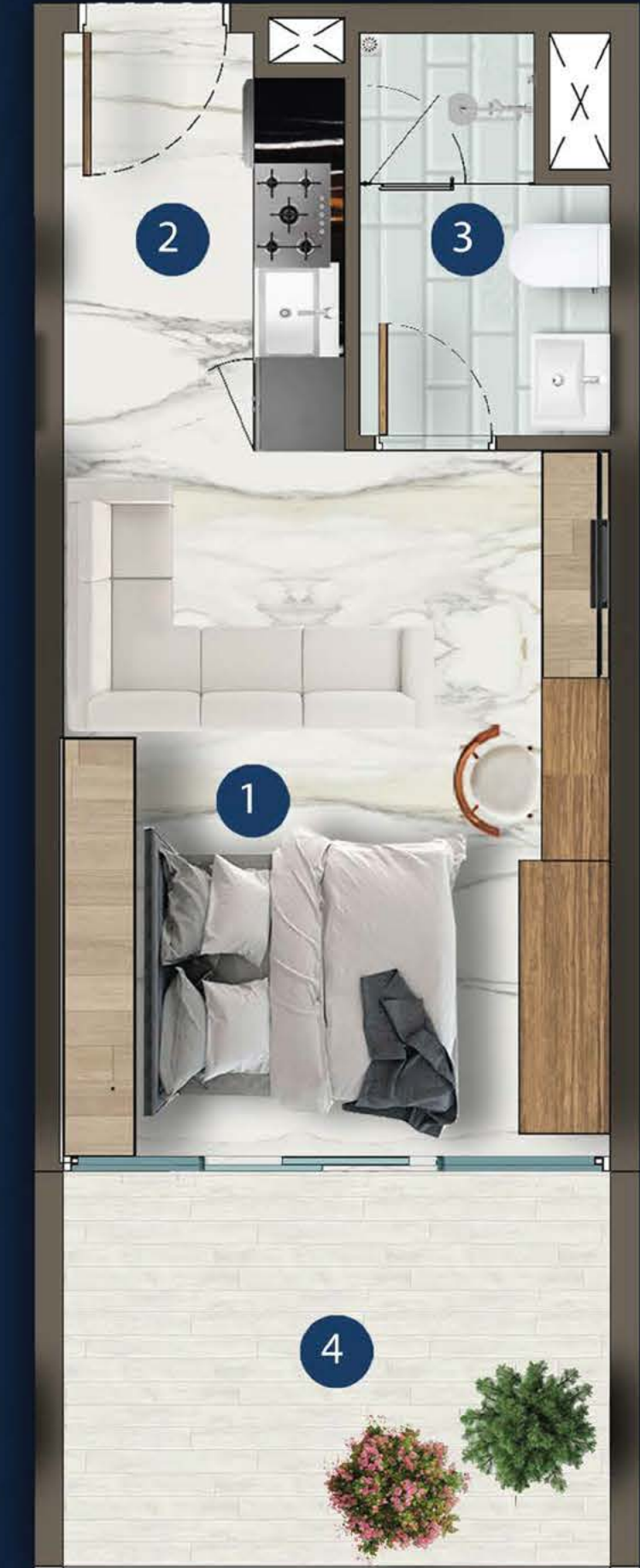
1 LIVING AREA	4.65*3.60 sq. m.
2 KITCHEN	2.45*1.85 sq. m.
3 BATH	2.65*1.65 sq. m.
4 BALCONY	3.60*2.60 sq. m.



Port Rashid & Dubai Maritime Promenade



Dubai Skyline, Amenities & Seascape

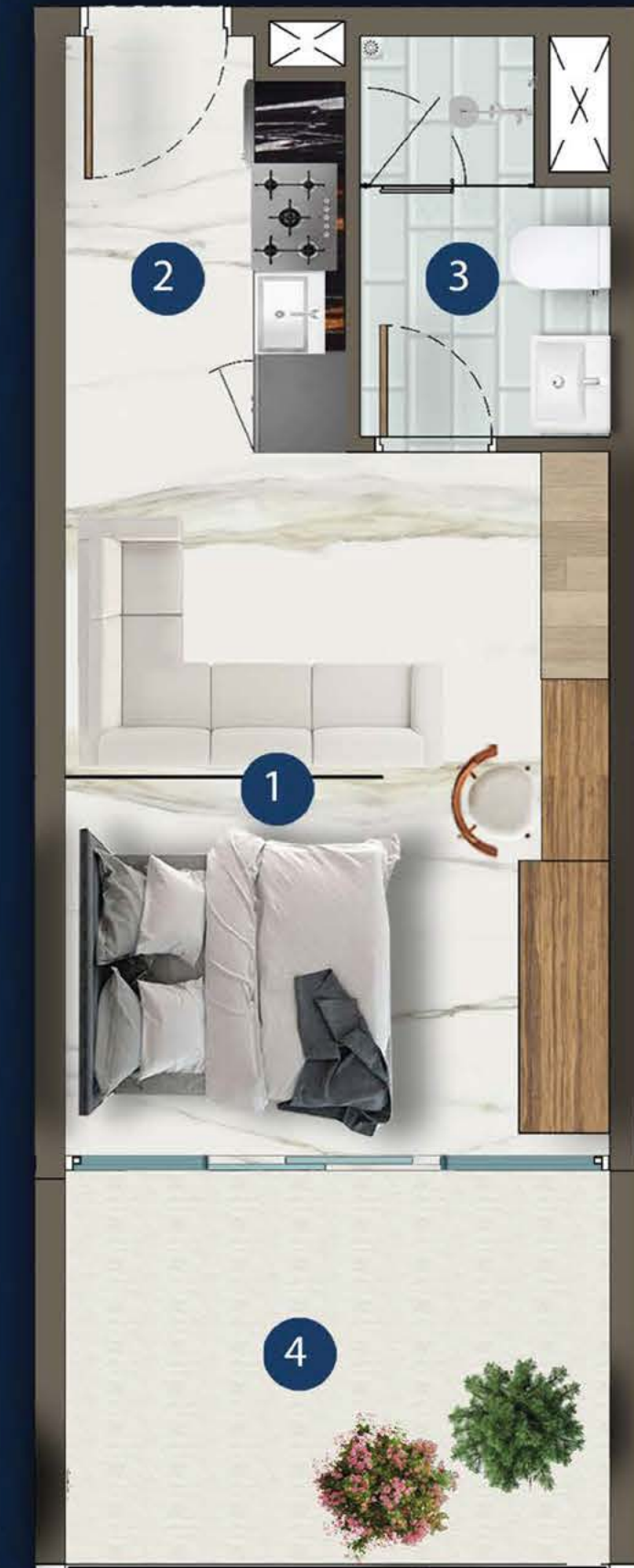
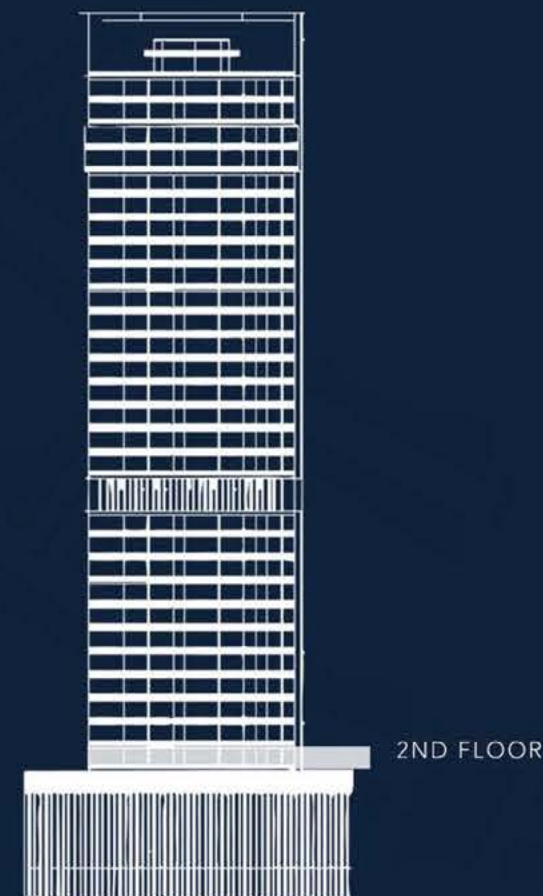


FLOOR PLANS:
 1. All dimensions are provided in both imperial and metric units and measured from finish to finish, excluding construction tolerances.
 2. All materials, dimensions, and drawings are approximate.
 3. Information is subject to change without notice at the developer's absolute discretion.
 4. Actual areas may vary from the stated areas.
 5. Drawings are not to scale.

2ND FLOOR | BLOCK - B | 2-7 | ST

Suite Area	300.31 sq. ft.
Balcony Area	109.46 sq. ft.
Total Area	409.78 sq. ft.

1 LIVING AREA	4.65*3.60 sq. m.
2 KITCHEN	2.45*1.85 sq. m.
3 BATH	2.65*1.65 sq. m.
4 BALCONY	3.60*2.55 sq. m.

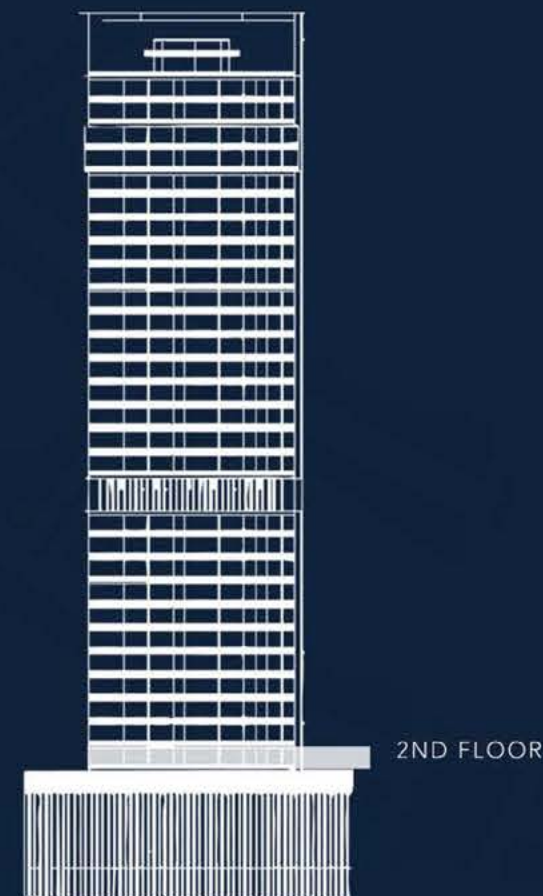


FLOOR PLANS:
 1. All dimensions are provided in both imperial and metric units and measured from finish to finish, excluding construction tolerances.
 2. All materials, dimensions, and drawings are approximate.
 3. Information is subject to change without notice at the developer's absolute discretion.
 4. Actual areas may vary from the stated areas.
 5. Drawings are not to scale.

2ND FLOOR | BLOCK - B | 2-8 | ST

Suite Area	300.31 sq. ft.
Balcony Area	108.93 sq. ft.
Total Area	409.24 sq. ft.

1 LIVING AREA	4.65*3.53 sq. m.
2 KITCHEN	2.45*1.85 sq. m.
3 BATH	2.65*1.65 sq. m.
4 BALCONY	3.60*2.65 sq. m.

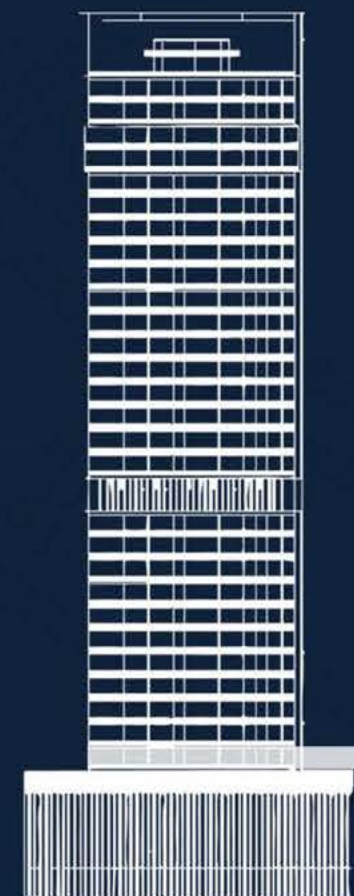


FLOOR PLANS:
 1. All dimensions are provided in both imperial and metric units and measured from finish to finish, excluding construction tolerances.
 2. All materials, dimensions, and drawings are approximate.
 3. Information is subject to change without notice at the developer's absolute discretion.
 4. Actual areas may vary from the stated areas.
 5. Drawings are not to scale.

2ND FLOOR | BLOCK - B | 2-9 | 1BR

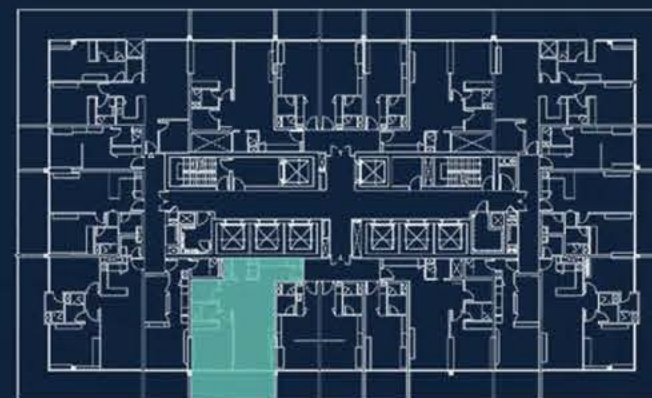
Suite Area	736.03 sq. ft.
Balcony Area	209.25 sq. ft.
Total Area	945.28 sq. ft.

1 LIVING AREA	7.70*3.30 sq. m.
2 BEDROOM	4.10*3.55 sq. m.
3 BATH	2.10*1.70 sq. m.
4 STORE	2.40*1.90 sq. m.
5 BATH	2.10*1.70 sq. m.
6 KITCHEN	3.60*1.90 sq. m.
7 BALCONY	7.10*2.65 sq. m.



2ND FLOOR

Port Rashid & Dubai Maritime Promenade



Dubai Skyline, Amenities & Seascape

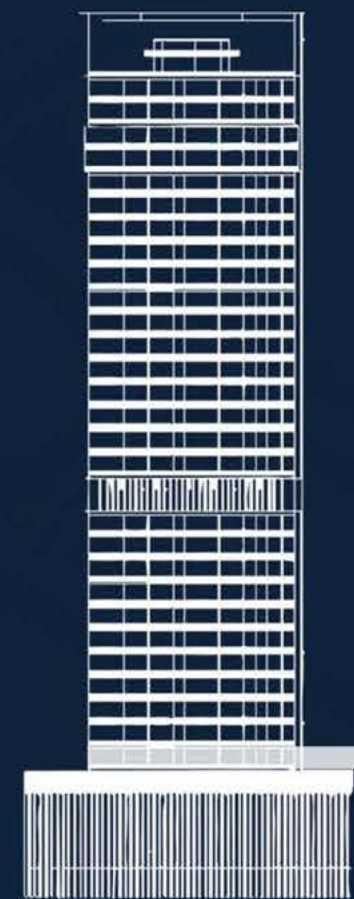


FLOOR PLANS:
 1. All dimensions are provided in both imperial and metric units and measured from finish to finish, excluding construction tolerances.
 2. All materials, dimensions, and drawings are approximate.
 3. Information is subject to change without notice at the developer's absolute discretion.
 4. Actual areas may vary from the stated areas.
 5. Drawings are not to scale.

2ND FLOOR | BLOCK - B | 2-10 | 1 BR

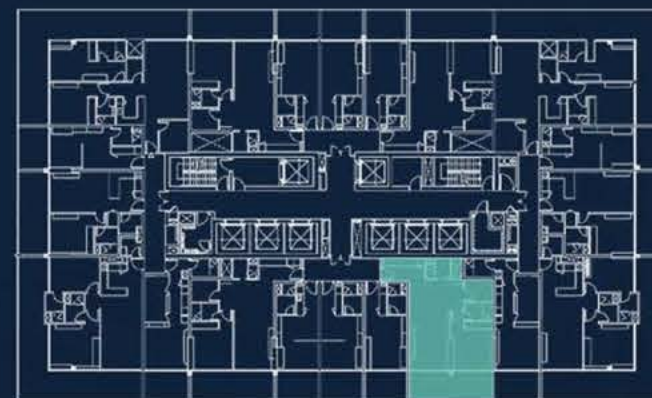
Suite Area	736.35 sq. ft.
Balcony Area	208.92 sq. ft.
Total Area	945.28 sq. ft.

1 LIVING AREA	7.60*3.37 sq. m.
2 BEDROOM	4.10*3.38 sq. m.
3 BATH	2.40*1.50 sq. m.
4 STORE	2.40*1.90 sq. m.
5 BATH	2.10*1.70 sq. m.
6 KITCHEN	3.60*1.90 sq. m.
7 BALCONY	7.10*2.65 sq. m.



2ND FLOOR

Port Rashid & Dubai Maritime Promenade



Dubai Skyline, Amenities & Seascape

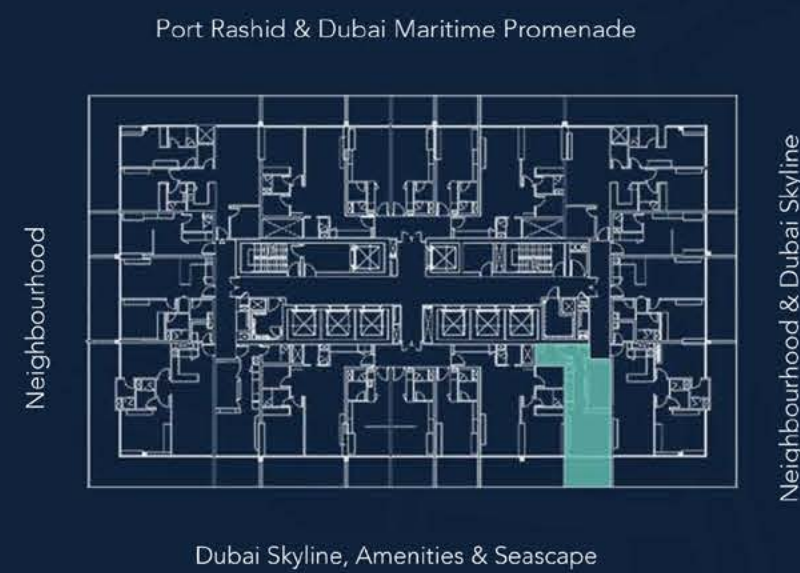
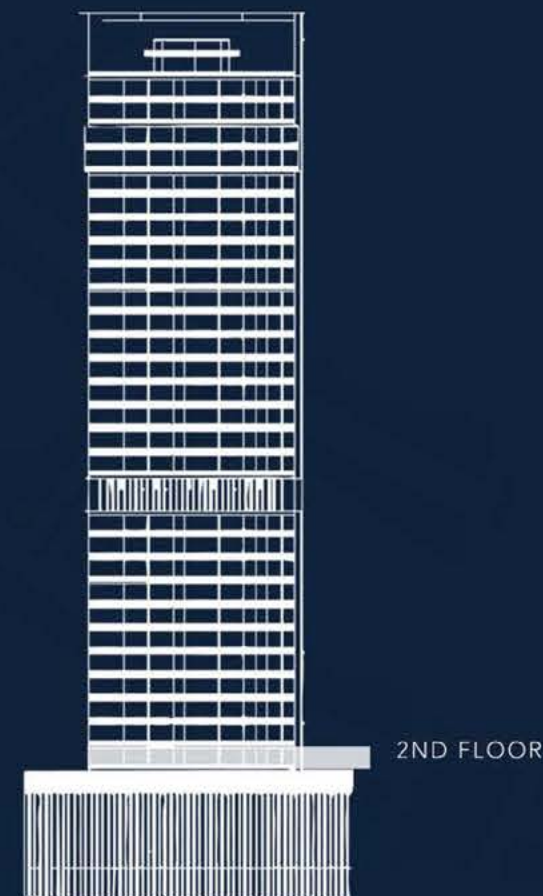


FLOOR PLANS:
 1. All dimensions are provided in both imperial and metric units and measured from finish to finish, excluding construction tolerances.
 2. All materials, dimensions, and drawings are approximate.
 3. Information is subject to change without notice at the developer's absolute discretion.
 4. Actual areas may vary from the stated areas.
 5. Drawings are not to scale.

2ND FLOOR | BLOCK - A | 2 - 11 | ST

Suite Area	437.33 sq. ft.
Balcony Area	115.17 sq. ft.
Total Area	552.51 sq. ft.

1 LIVINGROOM	3.80*3.78 sq. m.
2 BEDROOM	4.35*2.15 sq. m.
3 KITCHEN	3.78*1.62 sq. m.
4 BATH	2.40*1.60 sq. m.
5 BALCONY	3.80*2.65 sq. m.

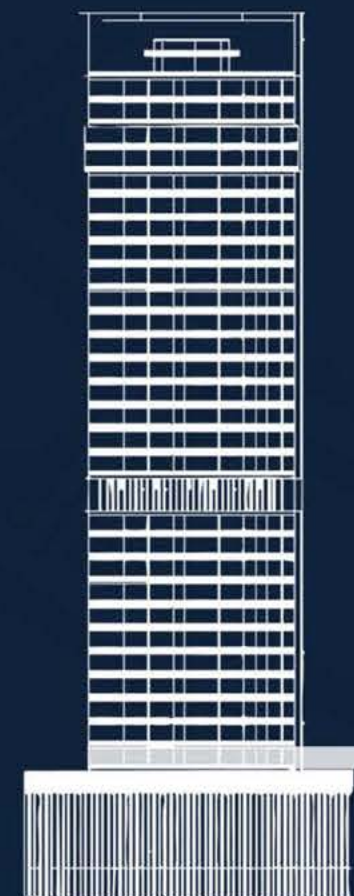


FLOOR PLANS:
 1. All dimensions are provided in both imperial and metric units and measured from finish to finish, excluding construction tolerances.
 2. All materials, dimensions, and drawings are approximate.
 3. Information is subject to change without notice at the developer's absolute discretion.
 4. Actual areas may vary from the stated areas.
 5. Drawings are not to scale.

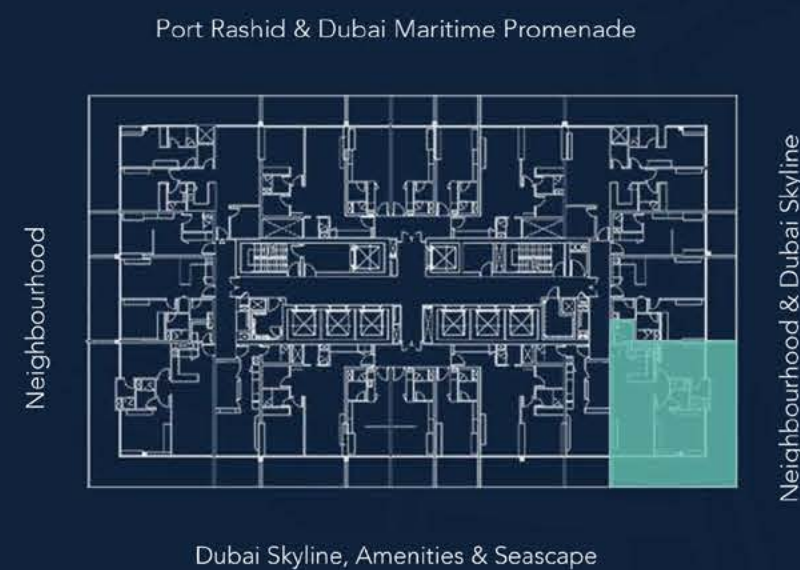
2ND FLOOR | BLOCK - A | 2 - 12 | 2 BR

Suite Area	876.72 sq. ft.
Balcony Area	584.80 sq. ft.
Total Area	1461.52 sq. ft.

1 LIVINGROOM	6.35*3.55 sq. m.
2 BEDROOM	4.30*3.60 sq. m.
3 BATH	2.50*1.60 sq. m.
4 BEDROOM	4.30*3.00 sq. m.
5 BATH	2.50*1.60 sq. m.
6 KITCHEN	2.70*2.25 sq. m.
7 POWDER	1.80*1.70 sq. m.
8 BALCONY	12.35*2.65 sq. m.
9 BALCONY	8.00*2.65 sq. m.



2ND FLOOR



Neighbourhood

Neighbourhood & Dubai Skyline



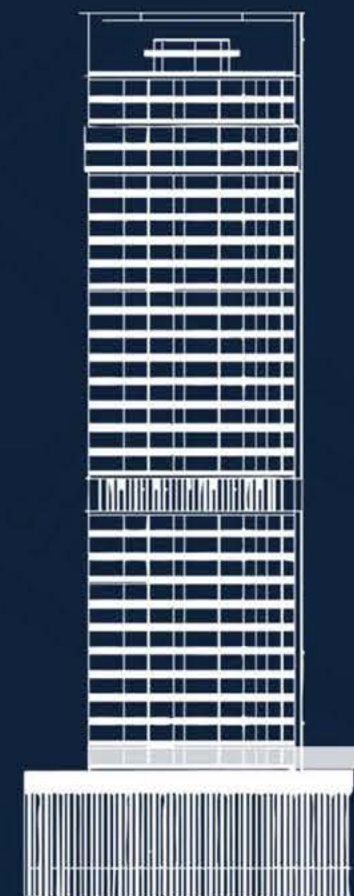
FLOOR PLANS:

1. All dimensions are provided in both imperial and metric units and measured from finish to finish, excluding construction tolerances.
2. All materials, dimensions, and drawings are approximate.
3. Information is subject to change without notice at the developer's absolute discretion.
4. Actual areas may vary from the stated areas.
5. Drawings are not to scale.

2ND FLOOR | BLOCK - A | 2 - 13 | 1 BR

Suite Area	586.95 sq. ft.
Balcony Area	206.02 sq. ft.
Total Area	792.97 sq. ft.

1 LIVINGROOM	5.15*3.50 sq. m.
2 BEDROOM	3.83*3.50 sq. m.
3 BATH	2.30*2.02 sq. m.
4 POWDER	1.90*1.70 sq. m.
5 W.M.	1.10*0.90 sq. m.
6 KITCHEN	2.480*2.30 sq. m.
7 BALCONY	7.05*2.50 sq. m.



2ND FLOOR



Neighbourhood & Dubai Skyline

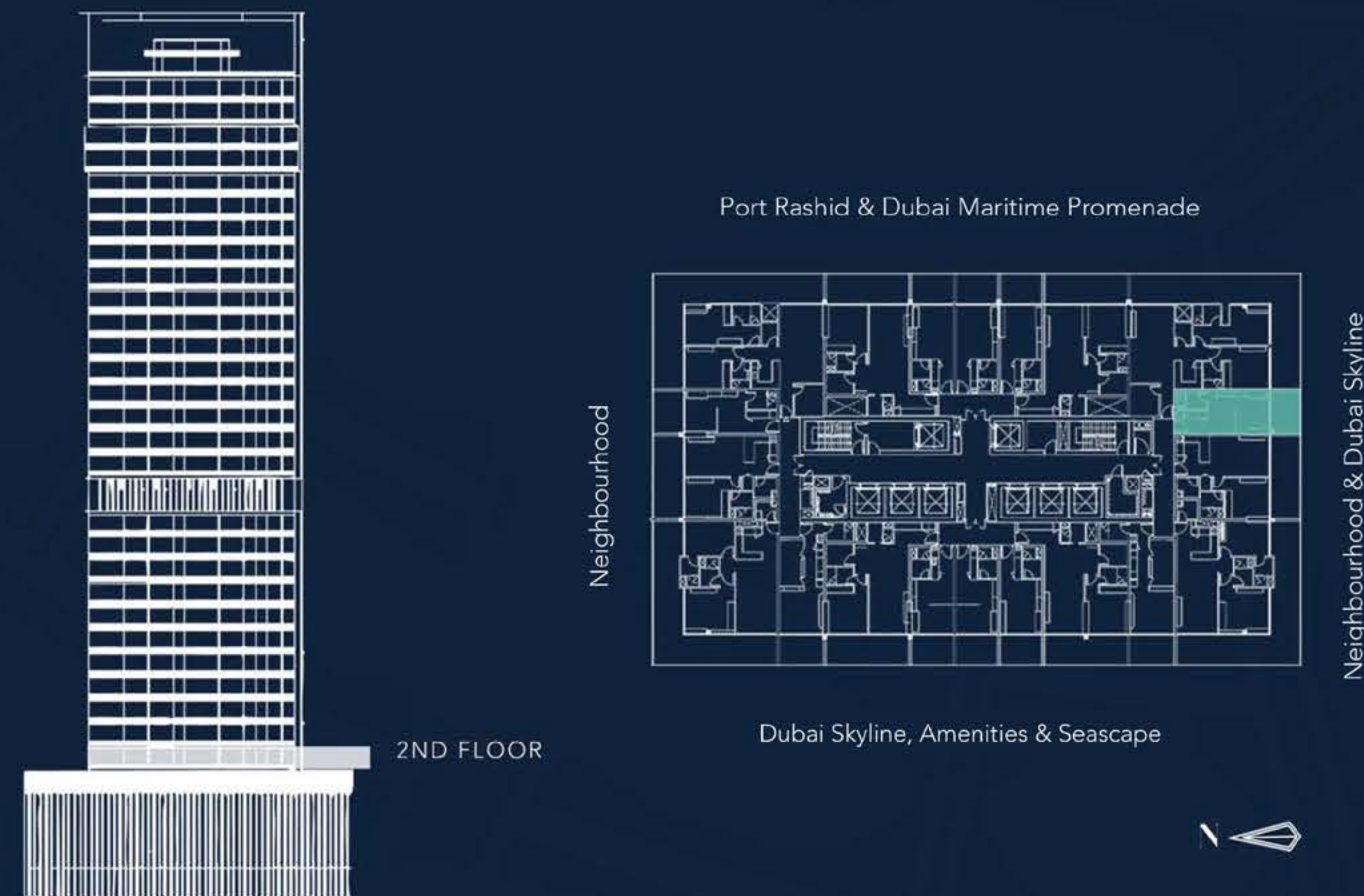


FLOOR PLANS:
 1. All dimensions are provided in both imperial and metric units and measured from finish to finish, excluding construction tolerances.
 2. All materials, dimensions, and drawings are approximate.
 3. Information is subject to change without notice at the developer's absolute discretion.
 4. Actual areas may vary from the stated areas.
 5. Drawings are not to scale.

2ND FLOOR | BLOCK - A | 2 - 14 | ST

Suite Area	323.13 sq. ft.
Balcony Area	105.91 sq. ft.
Total Area	429.04 sq. ft.

1 LIVING AREA	5.30*3.60 sq. m.
2 KITCHEN	2.65*1.90 sq. m.
3 BATH	2.55*1.60 sq. m.
4 BALCONY	3.60*2.60 sq. m.

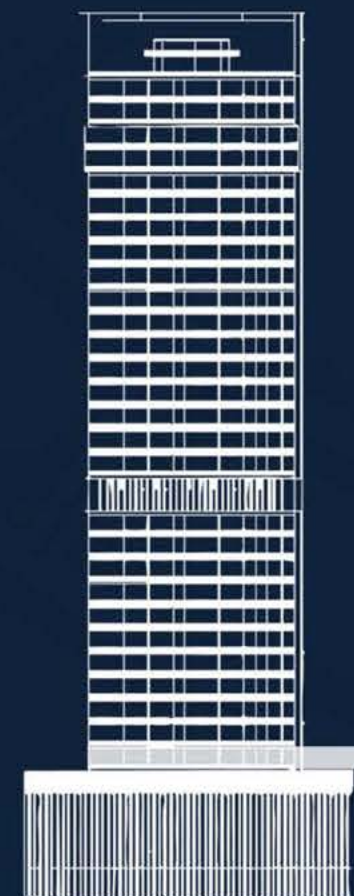


FLOOR PLANS:
 1. All dimensions are provided in both imperial and metric units and measured from finish to finish, excluding construction tolerances.
 2. All materials, dimensions, and drawings are approximate.
 3. Information is subject to change without notice at the developer's absolute discretion.
 4. Actual areas may vary from the stated areas.
 5. Drawings are not to scale.

2ND FLOOR | BLOCK - A | 2 - 15 | 2 BR

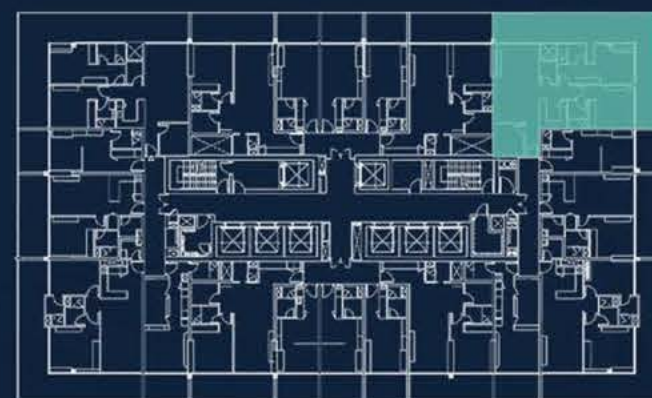
Suite Area	1024.29 sq. ft.
Balcony Area	630.33 sq. ft.
Total Area	1654.62 sq. ft.

1 LIVINGROOM	7.00*3.80 sq. m.
2 BEDROOM	4.05*3.60 sq. m.
3 BATH	2.40*1.65 sq. m.
4 BEDROOM	3.95*3.60 sq. m.
5 BATH	2.35*1.60 sq. m.
6 POWDER	2.00*1.40 sq. m.
7 STORE	2.30*2.30 sq. m.
8 KITCHEN	2.50*2.40 sq. m.
9 BALCONY	7.52*2.60 sq. m.
10 BALCONY	14.60*2.60 sq. m.



2ND FLOOR

Port Rashid & Dubai Maritime Promenade



Dubai Skyline, Amenities & Seascape

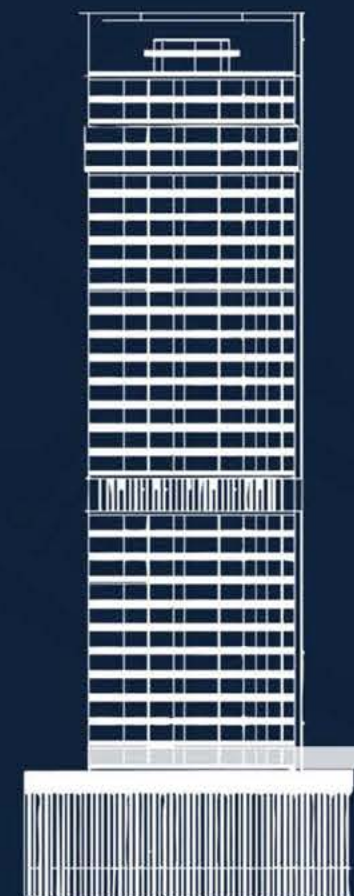


FLOOR PLANS:
 1. All dimensions are provided in both imperial and metric units and measured from finish to finish, excluding construction tolerances.
 2. All materials, dimensions, and drawings are approximate.
 3. Information is subject to change without notice at the developer's absolute discretion.
 4. Actual areas may vary from the stated areas.
 5. Drawings are not to scale.

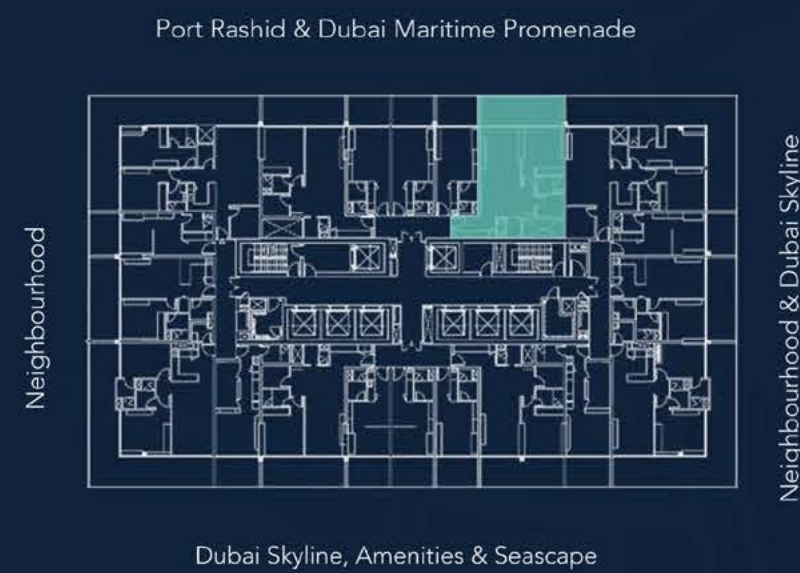
2ND FLOOR | BLOCK - D | 2 - 16 | 1 BR

Suite Area	759.71 sq. ft.
Balcony Area	209.03 sq. ft.
Total Area	968.75 sq. ft.

1 LIVINGROOM	7.60*3.37 sq. m.
2 BEDROOM	4.10*3.30 sq. m.
3 BATH	2.40*1.50 sq. m.
4 STORE	2.40*1.90 sq. m.
5 BATH	2.10*1.70 sq. m.
6 KITCHEN	3.60*1.90 sq. m.
7 BALCONY	7.10*2.65 sq. m.



2ND FLOOR



Neighbourhood & Dubai Skyline



FLOOR PLANS:
 1. All dimensions are provided in both imperial and metric units and measured from finish to finish, excluding construction tolerances.
 2. All materials, dimensions, and drawings are approximate.
 3. Information is subject to change without notice at the developer's absolute discretion.
 4. Actual areas may vary from the stated areas.
 5. Drawings are not to scale.

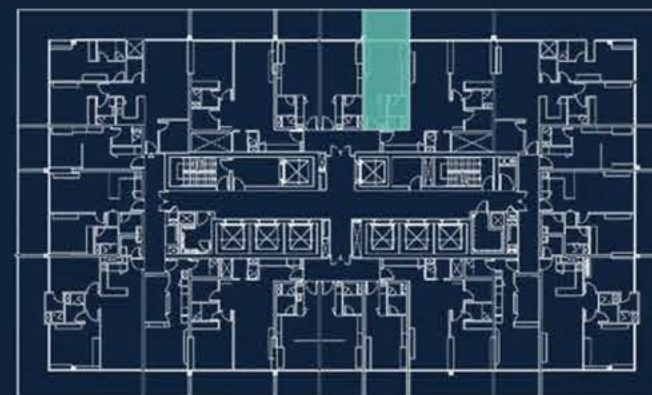
2ND FLOOR | BLOCK - D | 2-17 | ST

Suite Area	300.31 sq. ft.
Balcony Area	109.46 sq. ft.
Total Area	409.78 sq. ft.

1 LIVING AREA	4.65*3.60 sq. m.
2 KITCHEN	2.45*1.85 sq. m.
3 BATH	2.65*1.65 sq. m.
4 BALCONY	3.60*2.65 sq. m.



Port Rashid & Dubai Maritime Promenade



Dubai Skyline, Amenities & Seascape

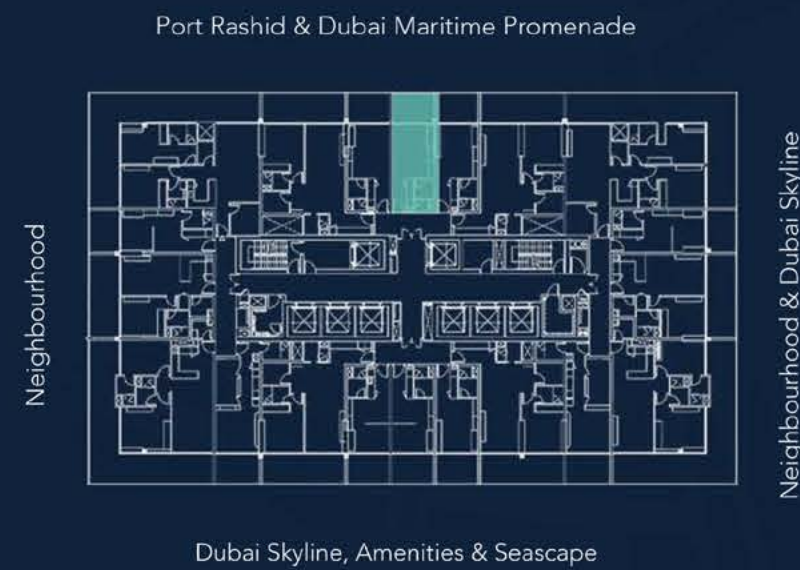
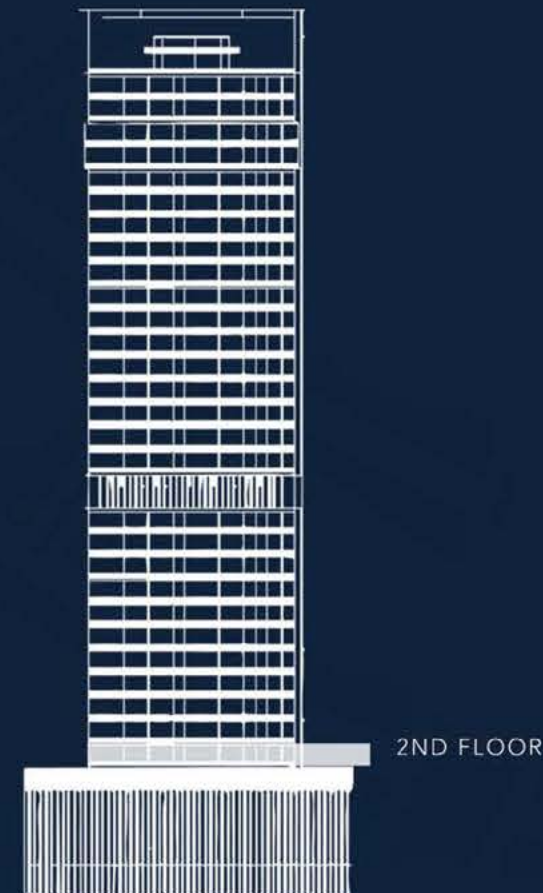


FLOOR PLANS:
 1. All dimensions are provided in both imperial and metric units and measured from finish to finish, excluding construction tolerances.
 2. All materials, dimensions, and drawings are approximate.
 3. Information is subject to change without notice at the developer's absolute discretion.
 4. Actual areas may vary from the stated areas.
 5. Drawings are not to scale.

2ND FLOOR | BLOCK - D | 2 - 18 | ST

Suite Area	300.31 sq. ft.
Balcony Area	109.46 sq. ft.
Total Area	409.78 sq. ft.

1 LIVING AREA	4.65*3.60 sq. m.
2 KITCHEN	2.45*1.85 sq. m.
3 BATH	2.65*1.65 sq. m.
4 BALCONY	3.60*2.65 sq. m.

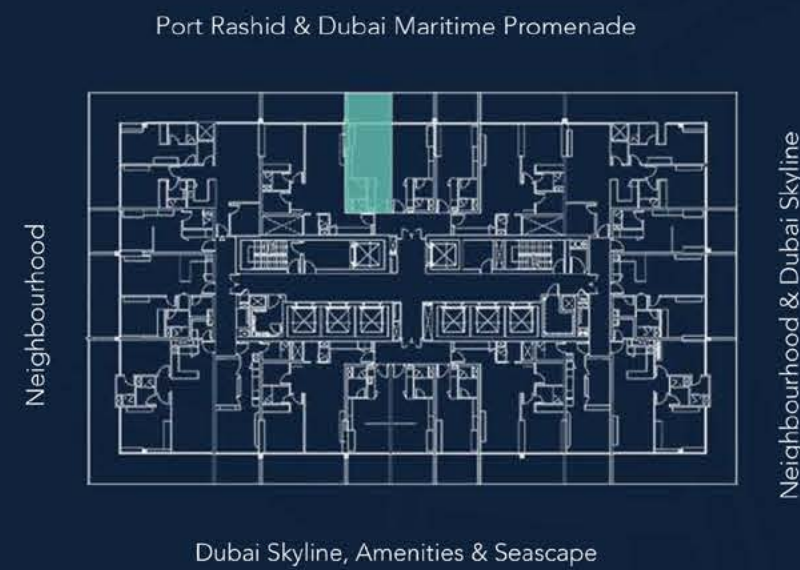
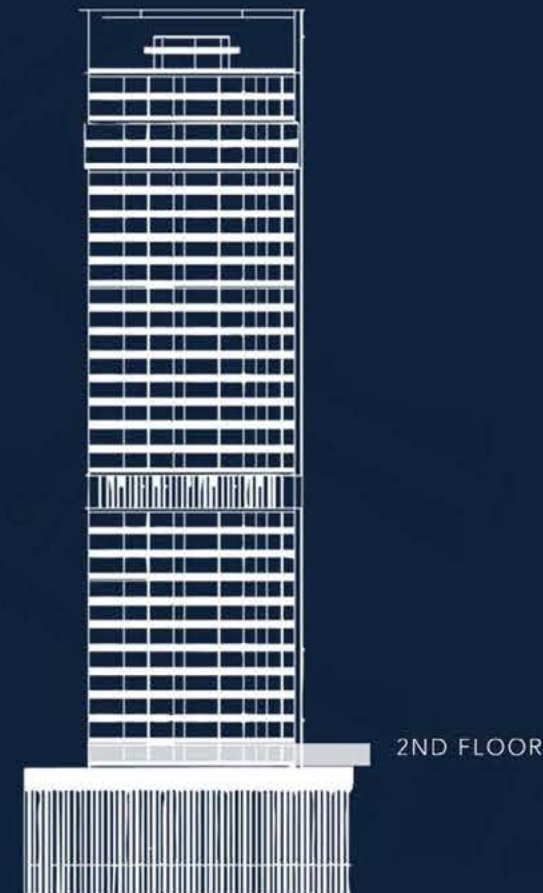


FLOOR PLANS:
 1. All dimensions are provided in both imperial and metric units and measured from finish to finish, excluding construction tolerances.
 2. All materials, dimensions, and drawings are approximate.
 3. Information is subject to change without notice at the developer's absolute discretion.
 4. Actual areas may vary from the stated areas.
 5. Drawings are not to scale.

2ND FLOOR | BLOCK - D | 2 - 19 | ST

Suite Area	300.31 sq. ft.
Balcony Area	109.46 sq. ft.
Total Area	409.78 sq. ft.

1 LIVING AREA	4.65*3.60 sq. m.
2 KITCHEN	2.45*1.85 sq. m.
3 BATH	2.65*1.65 sq. m.
4 BALCONY	3.60*2.65 sq. m.



Neighbourhood & Dubai Skyline

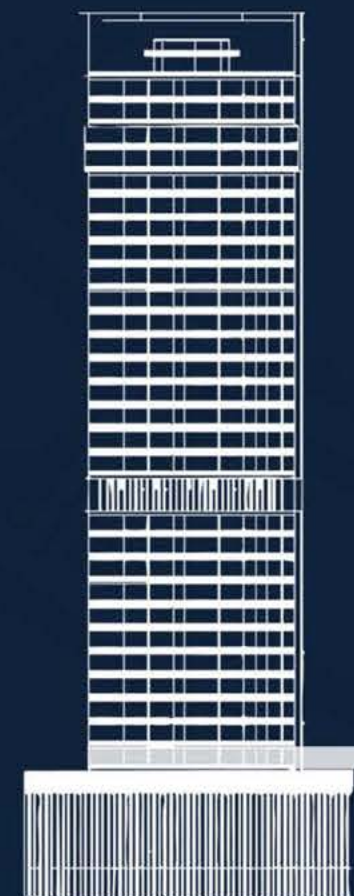


FLOOR PLANS:
 1. All dimensions are provided in both imperial and metric units and measured from finish to finish, excluding construction tolerances.
 2. All materials, dimensions, and drawings are approximate.
 3. Information is subject to change without notice at the developer's absolute discretion.
 4. Actual areas may vary from the stated areas.
 5. Drawings are not to scale.

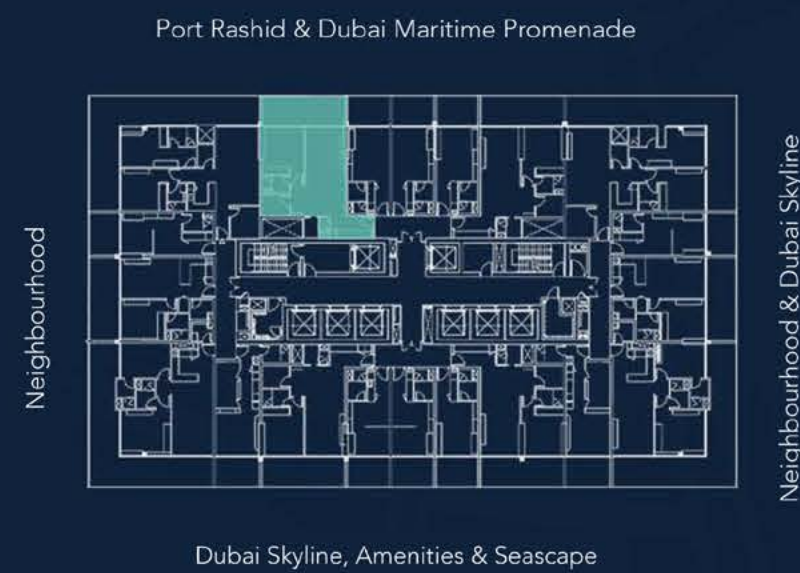
2ND FLOOR | BLOCK - D | 2 - 20 | 1 BR

Suite Area	759.50 sq. ft.
Balcony Area	209.25 sq. ft.
Total Area	968.75 sq. ft.

1 LIVINGROOM	7.65*3.38 sq. m.
2 BEDROOM	4.05*3.63 sq. m.
3 BATH	2.40*1.50 sq. m.
4 STORE	2.40*1.90 sq. m.
5 BATH	2.10*1.75 sq. m.
6 KITCHEN	3.60*1.90 sq. m.
7 BALCONY	7.10*2.65 sq. m.



2ND FLOOR



Neighbourhood & Dubai Skyline



FLOOR PLANS:
 1. All dimensions are provided in both imperial and metric units and measured from finish to finish, excluding construction tolerances.
 2. All materials, dimensions, and drawings are approximate.
 3. Information is subject to change without notice at the developer's absolute discretion.
 4. Actual areas may vary from the stated areas.
 5. Drawings are not to scale.