



# AZIZI LEILY

## TIMELESS ROOTS, MODERN HORIZONS

Azizi Leily rises in Al Jaddaf, where the emirate's deep cultural heritage glistens along the waters of the Dubai Creek and converges with contemporary living. These high-end residences offer uninterrupted panoramic views, a world-class array of amenities, and effortless access to the city's many business, leisure, and retail hubs. Among Dubai's most connected addresses, it combines unrivalled accessibility with serene refinement to create a lifestyle unlike any other.

### KEY FEATURES

- Premium freehold studios, one- and two-bedroom apartments, and opulent penthouses
- Prime location with market-leading rental yields and capital appreciation
- Easy metro access
- Exceptional connectivity to Al Khail Road and Sheikh Zayed Road
- Surrounded by the city's key business and leisure destinations
- Panoramic views overlooking the Dubai Creek & Dubai's skyline
- World-class amenities
- Top-tier finishes

### LOCATION BENEFITS



**3 MIN**  
Creek Metro Station



**5 MIN**  
Al Jaddaf Waterfront / Festival City /  
Palazzo Versace Hotel



**7 MIN**  
Dubai International Airport (DXB)



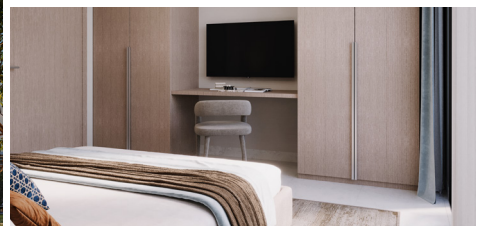
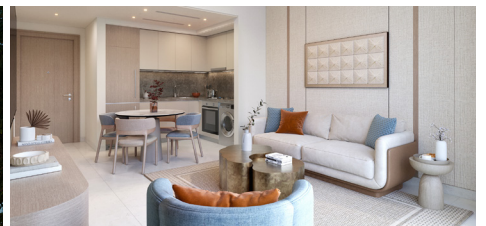
**9 MIN**  
Wafi Mall



**11 MIN**  
Dubai World Trade Centre



**12 MIN**  
Downtown Dubai / Burj Khalifa /  
Dubai Mall





## EXCLUSIVE AMENITIES

- Sauna & steam room
- Fully equipped gym
- Adults' swimming pool
- Kids' swimming pool
- Indoor and outdoor children's play areas
- Cinema
- Rooftop garden
- Multipurpose hall
- Fully accessible facilities for residents with disabilities

