



RIVIERA

RESIDENCES

FLOOR PLANS

ميريد
MERED

LEVELS 8, 12 & 16 FLOOR PLANS - TIER 1



1. STAIRS
2. LIFT LOBBY
3. SERVICE LIFT
4. DOMESTIC WATER
5. ELECTRICAL ROOM
6. TELECOM ROOM

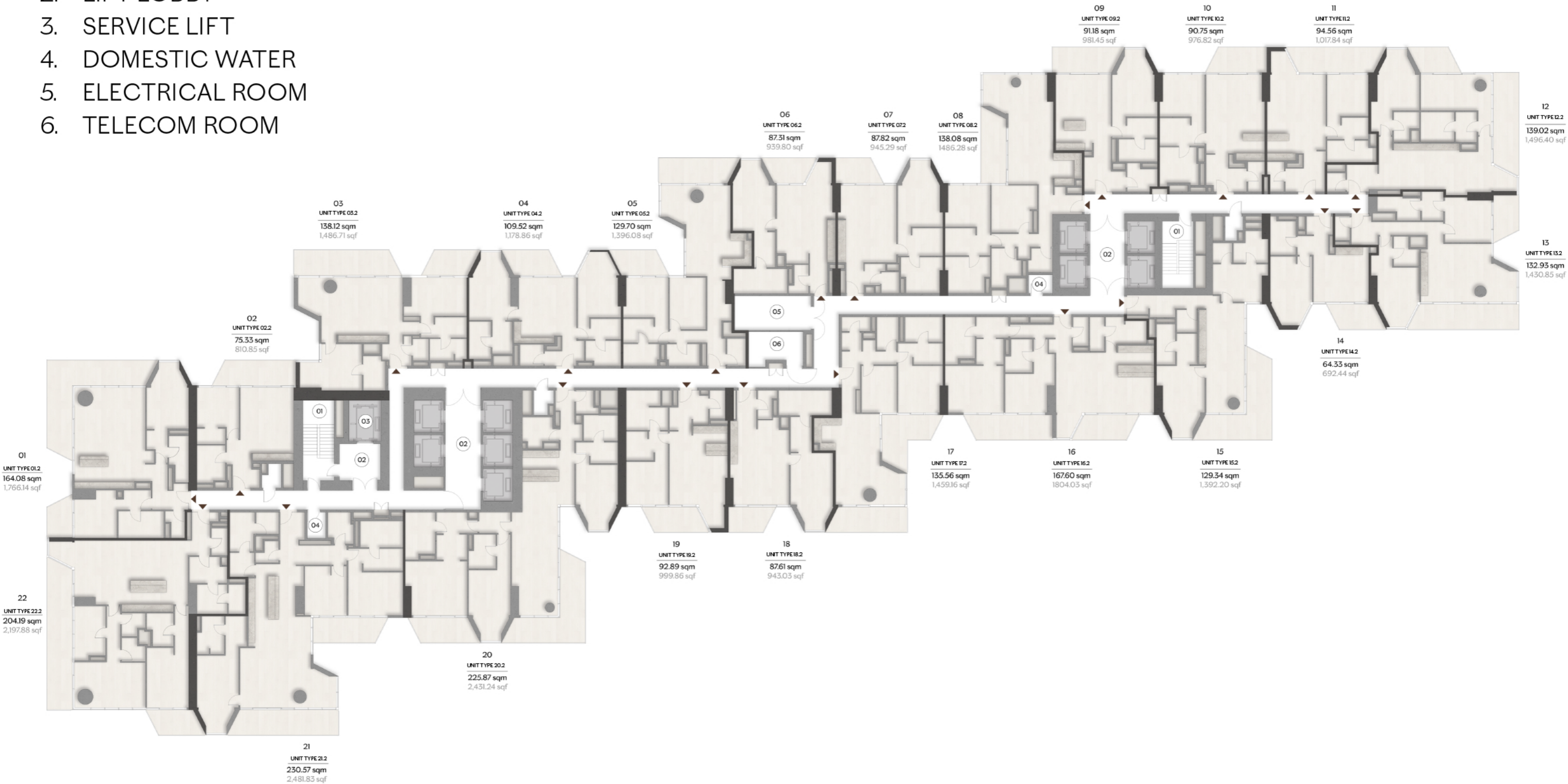


Disclaimer: All dimensions, materials and drawings are approximate. Information is subject to change without notice, at the developer's absolute discretion. The actual area may vary from the stated area. Drawings are not to scale. All images used are for illustrative purposes only and do not represent the actual size, features, specifications, fittings and furnishings. The developer reserves the right to make revisions/alterations, at the absolute discretion without any liability whatsoever.

LEVELS 9 & 13 FLOOR PLANS - TIER 1



1. STAIRS
2. LIFT LOBBY
3. SERVICE LIFT
4. DOMESTIC WATER
5. ELECTRICAL ROOM
6. TELECOM ROOM

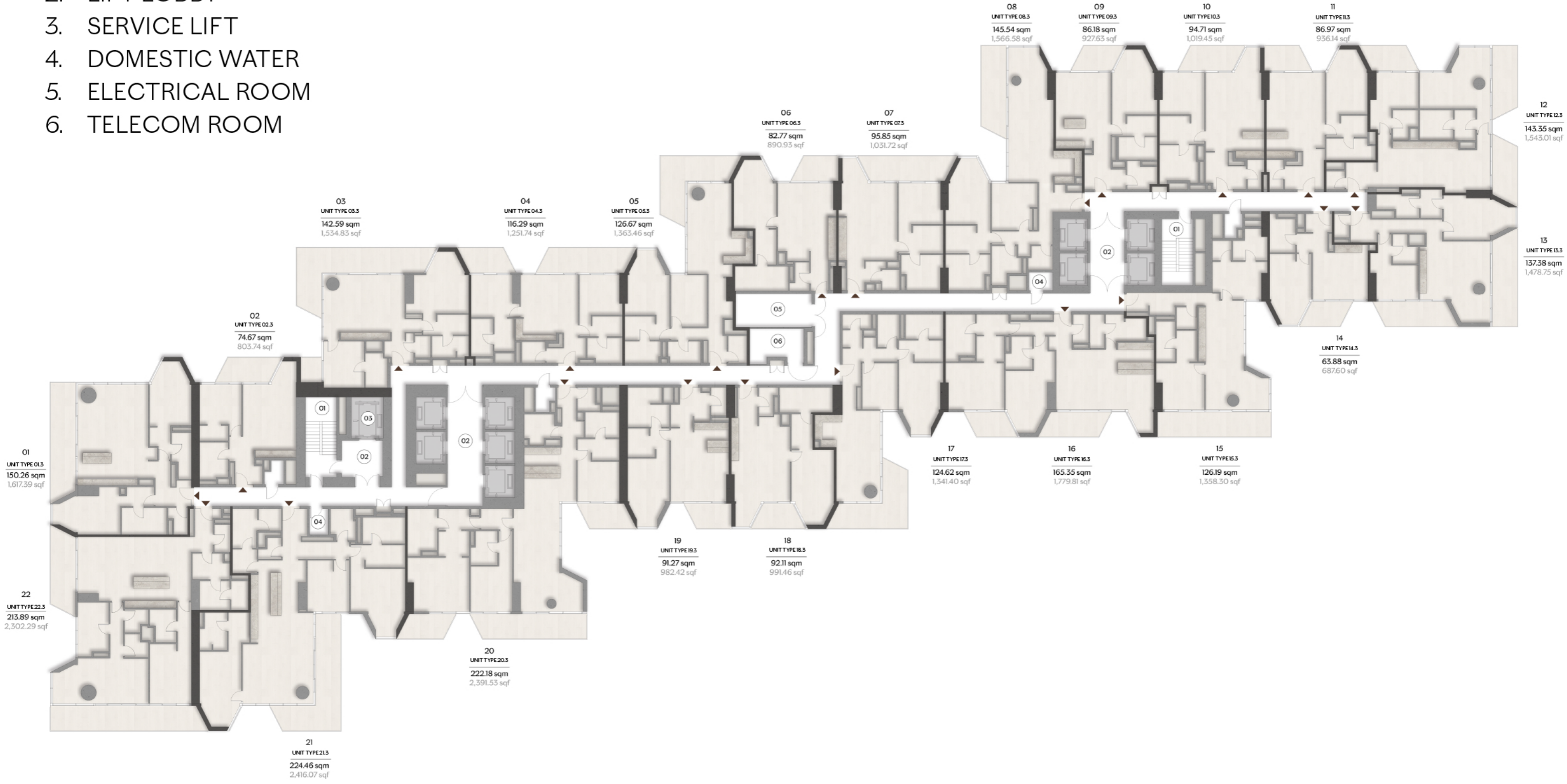


Disclaimer: All dimensions, materials and drawings are approximate. Information is subject to change without notice, at the developer's absolute discretion. The actual area may vary from the stated area. Drawings are not to scale. All images used are for illustrative purposes only and do not represent the actual size, features, specifications, fittings and furnishings. The developer reserves the right to make revisions/alterations, at the absolute discretion without any liability whatsoever.

LEVELS 10 & 14 FLOOR PLANS - TIER 1



1. STAIRS
2. LIFT LOBBY
3. SERVICE LIFT
4. DOMESTIC WATER
5. ELECTRICAL ROOM
6. TELECOM ROOM

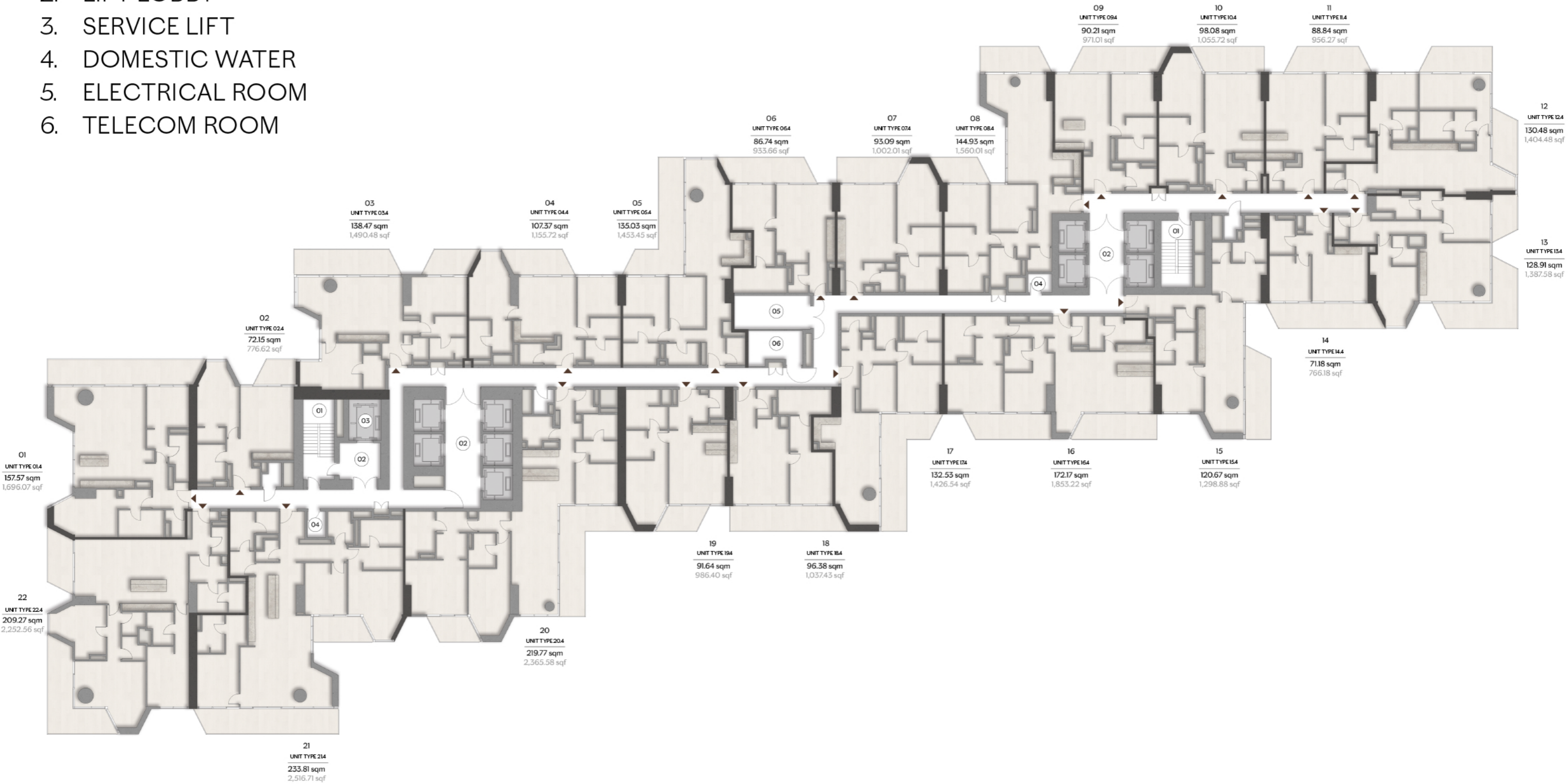


Disclaimer: All dimensions, materials and drawings are approximate. Information is subject to change without notice, at the developer's absolute discretion. The actual area may vary from the stated area. Drawings are not to scale. All images used are for illustrative purposes only and do not represent the actual size, features, specifications, fittings and furnishings. The developer reserves the right to make revisions/alterations, at the absolute discretion without any liability whatsoever.

LEVELS 11 & 15 FLOOR PLANS - TIER 1



1. STAIRS
2. LIFT LOBBY
3. SERVICE LIFT
4. DOMESTIC WATER
5. ELECTRICAL ROOM
6. TELECOM ROOM

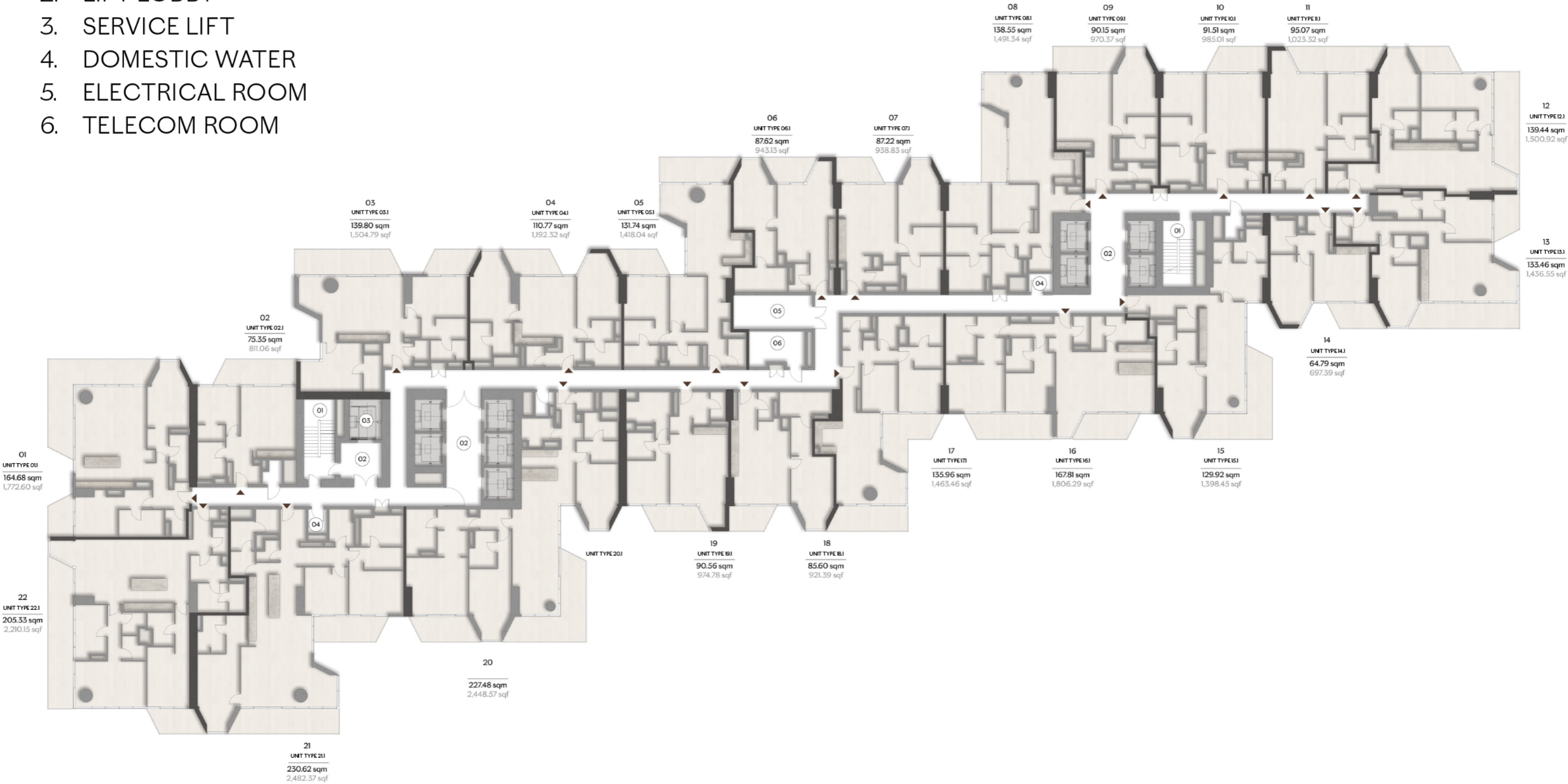


Disclaimer: All dimensions, materials and drawings are approximate. Information is subject to change without notice, at the developer's absolute discretion. The actual area may vary from the stated area. Drawings are not to scale. All images used are for illustrative purposes only and do not represent the actual size, features, specifications, fittings and furnishings. The developer reserves the right to make revisions/alterations, at the absolute discretion without any liability whatsoever.

LEVELS 18, 22 & 26 FLOOR PLANS - TIER 2



1. STAIRS
2. LIFT LOBBY
3. SERVICE LIFT
4. DOMESTIC WATER
5. ELECTRICAL ROOM
6. TELECOM ROOM



Disclaimer: All dimensions, materials and drawings are approximate. Information is subject to change without notice, at the developer's absolute discretion. The actual area may vary from the stated area. Drawings are not to scale. All images used are for illustrative purposes only and do not represent the actual size, features, specifications, fittings and furnishings. The developer reserves the right to make revisions/alterations, at the absolute discretion without any liability whatsoever.

LEVELS 19 & 23 FLOOR PLANS - TIER 2



1. STAIRS
2. LIFT LOBBY
3. SERVICE LIFT
4. DOMESTIC WATER
5. ELECTRICAL ROOM
6. TELECOM ROOM



Disclaimer: All dimensions, materials and drawings are approximate. Information is subject to change without notice, at the developer's absolute discretion. The actual area may vary from the stated area. Drawings are not to scale. All images used are for illustrative purposes only and do not represent the actual size, features, specifications, fittings and furnishings. The developer reserves the right to make revisions/alterations, at the absolute discretion without any liability whatsoever.

LEVELS 20 & 24 FLOOR PLANS - TIER 2



1. STAIRS
2. LIFT LOBBY
3. SERVICE LIFT
4. DOMESTIC WATER
5. ELECTRICAL ROOM
6. TELECOM ROOM

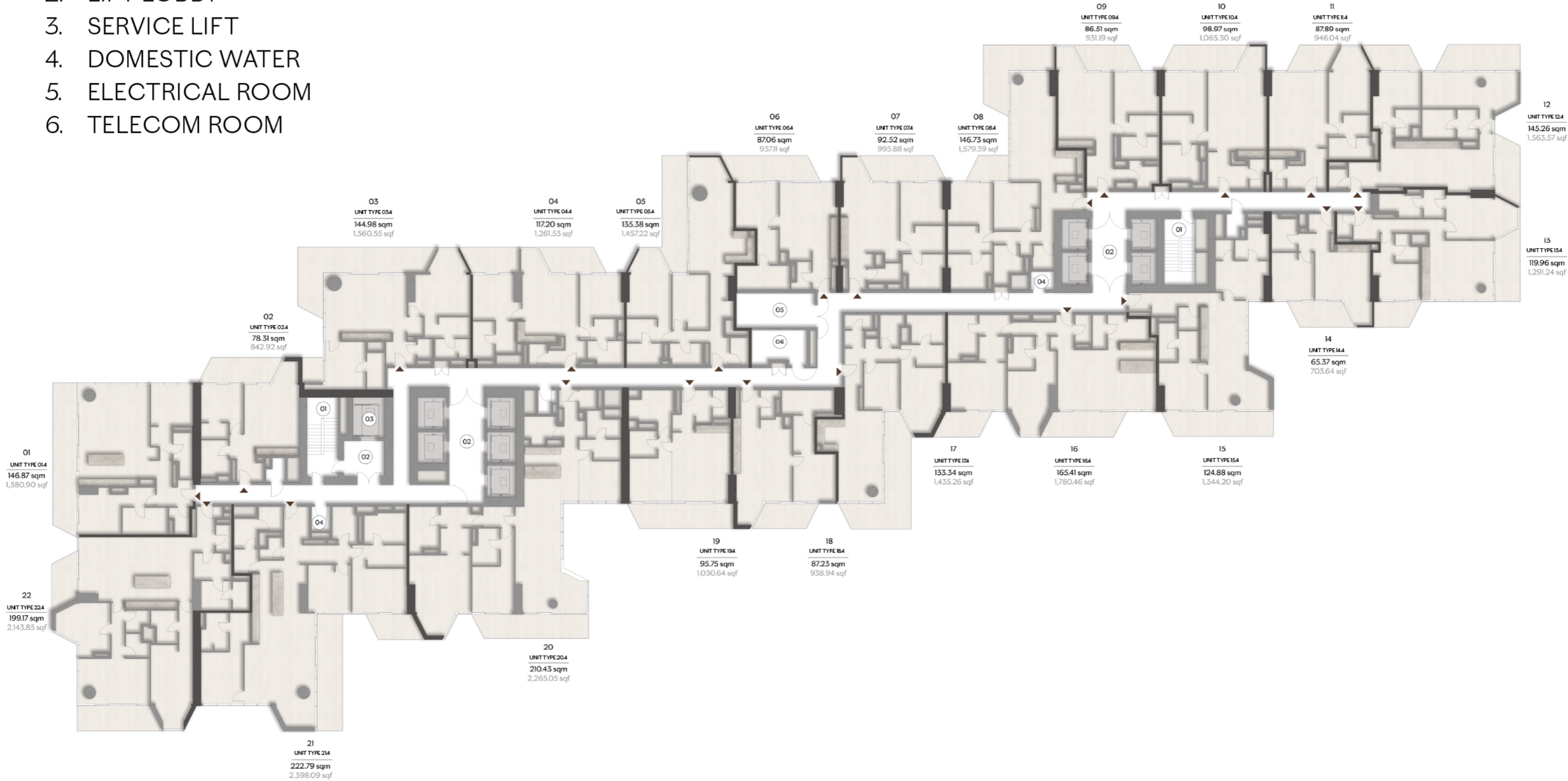


Disclaimer: All dimensions, materials and drawings are approximate. Information is subject to change without notice, at the developer's absolute discretion. The actual area may vary from the stated area. Drawings are not to scale. All images used are for illustrative purposes only and do not represent the actual size, features, specifications, fittings and furnishings. The developer reserves the right to make revisions/alterations, at the absolute discretion without any liability whatsoever.

LEVELS 21 & 25 FLOOR PLANS - TIER 2



1. STAIRS
2. LIFT LOBBY
3. SERVICE LIFT
4. DOMESTIC WATER
5. ELECTRICAL ROOM
6. TELECOM ROOM



Disclaimer: All dimensions, materials and drawings are approximate. Information is subject to change without notice, at the developer's absolute discretion. The actual area may vary from the stated area. Drawings are not to scale. All images used are for illustrative purposes only and do not represent the actual size, features, specifications, fittings and furnishings. The developer reserves the right to make revisions/alterations, at the absolute discretion without any liability whatsoever.



RIVIERA

RESIDENCES

UNIT LAYOUTS

ميريد
MERED

1 BHK

UNIT TYPE 02

- 1. HALL 50.70 SQ.FT
- 2. KITCHEN & DINING 153.60 SQ.FT
- 3. LIVING 168.99 SQ.FT
- 4. BALCONY 149.94 SQ.FT
- 5. MASTER BEDROOM 169.21 SQ.FT
- 6. BATHROOM 77.82 SQ.FT



SUITE AREA	60.10 SQ.M	646.91 SQ.FT
BALCONY AREA	15.23 SQ.M	163.93 SQ.FT
TOTAL AREA	75.33 SQ.M	810.85 SQ.FT



1 BHK

UNIT TYPE 06

- 1. HALL 41.12 SQ.FT
- 2. POWDER 32.40 SQ.FT
- 3. KITCHEN & DINING 188.37 SQ.FT
- 4. LIVING 142.84 SQ.FT
- 5. BALCONY 168.99 SQ.FT
- 6. MASTER BEDROOM 205.91 SQ.FT
- 7. BATHROOM 99.46 SQ.FT



SUITE AREA	69.68 SQ.M	750.03 SQ.FT
BALCONY AREA	17.06 SQ.M	183.63 SQ.FT
TOTAL AREA	86.74 SQ.M	933.66 SQ.FT



1 BHK

UNIT TYPE 07

- 1. HALL 69.21 SQ.FT
- 2. POWDER 27.99 SQ.FT
- 3. KITCHEN & DINING 193.86 SQ.FT
- 4. LIVING 143.16 SQ.FT
- 5. BALCONY 80.51 SQ.FT
- 6. MASTER BEDROOM 283.31 SQ.FT
- 7. BATHROOM 102.80 SQ.FT



SUITE AREA	79.65 SQ.M	857.35 SQ.FT
BALCONY AREA	8.17 SQ.M	87.94 SQ.FT
TOTAL AREA	87.82 SQ.M	945.29 SQ.FT



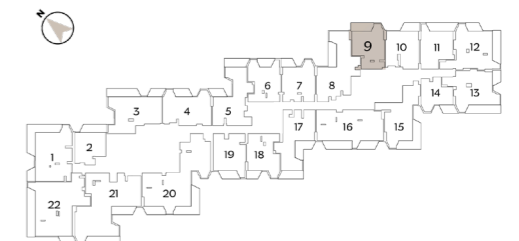
1 BHK

UNIT TYPE 09

- 1. HALL 100.64 SQ.FT
- 2. POWDER 55.54 SQ.FT
- 3. KITCHEN & DINING 129.81 SQ.FT
- 4. LIVING 185.57 SQ.FT
- 5. BALCONY 128.31 SQ.FT
- 6. MASTER BEDROOM 259.63 SQ.FT
- 7. BATHROOM 66.63 SQ.FT



SUITE AREA	77.59 SQ.M	835.17 SQ.FT
BALCONY AREA	13.59 SQ.M	146.28 SQ.FT
TOTAL AREA	91.18 SQ.M	981.45 SQ.FT



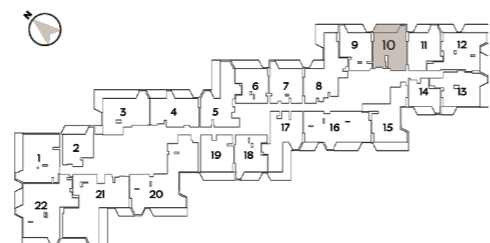
1 BHK

UNIT TYPE 10

1. HALL	92.89 SQ.FT
2. POWDER	34.98 SQ.FT
3. KITCHEN & DINING	126.91 SQ.FT
4. LIVING	268.02 SQ.FT
5. BALCONY	143.81 SQ.FT
6. MASTER BEDROOM	232.82 SQ.FT
7. BATHROOM	105.81 SQ.FT



SUITE AREA	83.18 SQ.M	895.34 SQ.FT
BALCONY AREA	15.07 SQ.M	162.21 SQ.FT
TOTAL AREA	98.25 SQ.M	1,057.55 SQ.FT



1 BHK

UNIT TYPE 11

1. HALL	98.49 SQ.FT
2. POWDER	34.98 SQ.FT
3. KITCHEN & DINING	122.39 SQ.FT
4. LIVING	267.70 SQ.FT
5. BALCONY	170.29 SQ.FT
6. MASTER BEDROOM	199.89 SQ.FT
7. BATHROOM	72.33 SQ.FT



SUITE AREA	77.03 SQ.M	829.14 SQ.FT
BALCONY AREA	17.53 SQ.M	188.69 SQ.FT
TOTAL AREA	94.56 SQ.M	1,017.84 SQ.FT



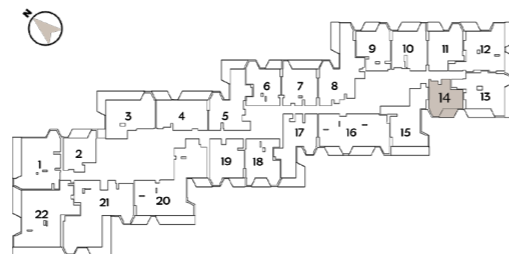
1 BHK

UNIT TYPE 14

1. HALL	82.02 SQ.FT
2. KITCHEN & DINING	117.86 SQ.FT
3. LIVING	101.61 SQ.FT
4. BALCONY	80.51 SQ.FT
5. MASTER BEDROOM	201.93 SQ.FT
6. BATHROOM	66.41 SQ.FT



SUITE AREA	55.23 SQ.M	594.49 SQ.FT
BALCONY AREA	8.65 SQ.M	93.11 SQ.FT
TOTAL AREA	63.88 SQ.M	687.60 SQ.FT



1 BHK

UNIT TYPE 18

1. HALL	41.98 SQ.FT
2. POWDER	31.75 SQ.FT
3. KITCHEN & DINING	248.65 SQ.FT
4. LIVING	113.67 SQ.FT
5. BALCONY	80.51 SQ.FT
6. MASTER BEDROOM	277.28 SQ.FT
7. BATHROOM	99.78 SQ.FT



SUITE AREA	79.44 SQ.M	855.09 SQ.FT
BALCONY AREA	8.17 SQ.M	87.94 SQ.FT
TOTAL AREA	87.61 SQ.M	943.03 SQ.FT



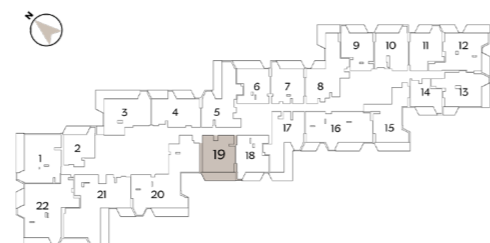
1 BHK

UNIT TYPE 19

1. HALL	96.44 SQ.FT
2. POWDER	33.26 SQ.FT
3. KITCHEN & DINING	140.25 SQ.FT
4. LIVING	193.00 SQ.FT
5. BALCONY	197.09 SQ.FT
6. MASTER BEDROOM	229.49 SQ.FT
7. BATHROOM	114.53 SQ.FT



SUITE AREA	78.17 SQ.M	841.41 SQ.FT
BALCONY AREA	20.03 SQ.M	215.60 SQ.FT
TOTAL AREA	98.20 SQ.M	1,057.02 SQ.FT



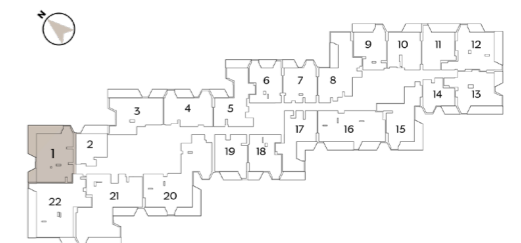
2 BHK

UNIT TYPE 01

1. HALL	90.85 SQ.FT
2. POWDER	33.48 SQ.FT
3. KITCHEN & DINING	175.13 SQ.FT
4. LIVING	381.37 SQ.FT
5. BALCONY NO.1	339.39 SQ.FT
6. MASTER BEDROOM	181.05 SQ.FT
7. BALCONY NO. 2	71.80 SQ.FT
8. BATHROOM NO.1	90.09 SQ.FT
9. BEDROOM	228.19 SQ.FT
10. BATHROOM NO. 2	61.25 SQ.FT



SUITE AREA	122.08 SQ.M	1,314.06 SQ.FT
BALCONY AREA	42.00 SQ.M	452.08 SQ.FT
TOTAL AREA	164.08 SQ.M	1,766.14 SQ.FT



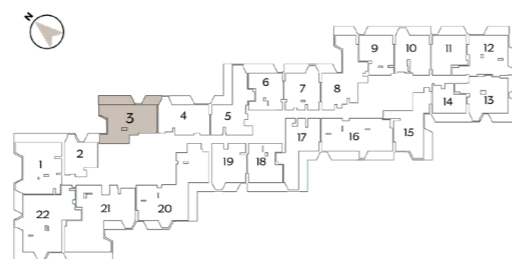
2 BHK

UNIT TYPE 03

1. HALL	59.31 SQ.FT
2. POWDER	25.73 SQ.FT
3. KITCHEN & DINING	176.74 SQ.FT
4. LIVING	307.31 SQ.FT
5. BALCONY NO.1	198.27 SQ.FT
6. MASTER BEDROOM	238.64 SQ.FT
7. BALCONY NO.2	90.63 SQ.FT
8. BATHROOM NO.1	55.97 SQ.FT
9. BEDROOM	189.01 SQ.FT
10. BATHROOM NO.2	54.79 SQ.FT



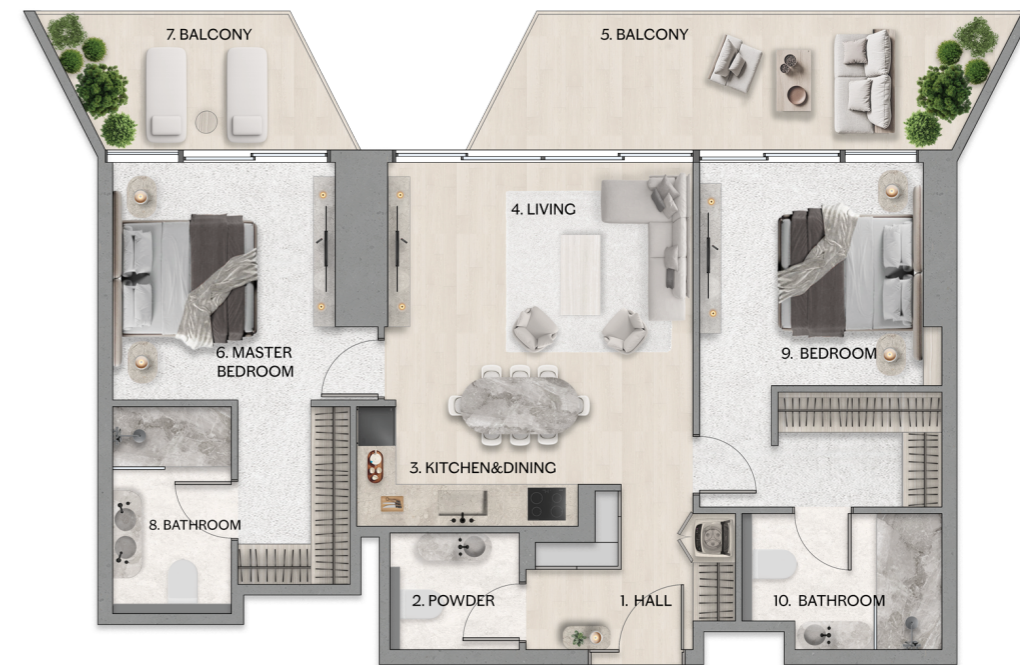
SUITE AREA	109.18 SQ.M	1,175.20 SQ.FT
BALCONY AREA	29.29 SQ.M	315.27 SQ.FT
TOTAL AREA	138.47 SQ.M	1,490.48 SQ.FT



2 BHK

UNIT TYPE 04

1. HALL	61.25 SQ.FT
2. POWDER	38.64 SQ.FT
3. KITCHEN & DINING	151.13 SQ.FT
4. LIVING	126.37 SQ.FT
5. BALCONY NO.1	172.22 SQ.FT
6. MASTER BEDROOM	193.54 SQ.FT
7. BALCONY NO.2	90.63 SQ.FT
8. BATHROOM NO.1	62.86 SQ.FT
9. BEDROOM	200.75 SQ.FT
10. BATHROOM NO.2	65.55 SQ.FT



SUITE AREA	89.72 SQ.M	965.74 SQ.FT
BALCONY AREA	26.57 SQ.M	286.00 SQ.FT
TOTAL AREA	116.29 SQ.M	1,251.74 SQ.FT



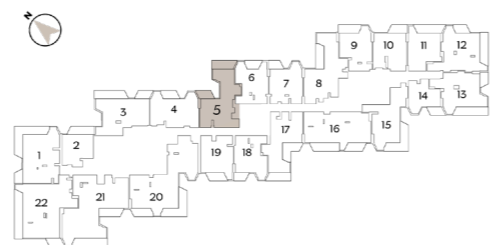
2 BHK

UNIT TYPE 05

1. HALL	156.40 SQ.FT
2. POWDER	37.78 SQ.FT
3. KITCHEN & DINING	199.56 SQ.FT
4. LIVING	226.47 SQ.FT
5. BALCONY NO.1	147.25 SQ.FT
6. MASTER BEDROOM	213.66 SQ.FT
7. BALCONY NO.2	92.68 SQ.FT
8. BATHROOM NO.1	59.52 SQ.FT
9. BEDROOM	145.96 SQ.FT
10. BATHROOM NO.2	53.82 SQ.FT



SUITE AREA	105.61 SQ.M	1,136.78 SQ.FT
BALCONY AREA	24.09 SQ.M	259.30 SQ.FT
TOTAL AREA	129.70 SQ.M	1,396.08 SQ.FT



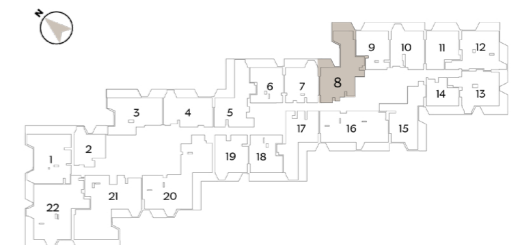
2 BHK

UNIT TYPE 08

1. HALL	173.19 SQ.FT
2. POWDER	42.19 SQ.FT
3. KITCHEN & DINING	173.19 SQ.FT
4. LIVING	315.92 SQ.FT
5. BALCONY NO.1	127.98 SQ.FT
6. MASTER BEDROOM	230.99 SQ.FT
7. BALCONY NO.2	92.14 SQ.FT
8. BATHROOM NO.1	109.90 SQ.FT
9. BEDROOM	156.61 SQ.FT
10. BATHROOM NO.2	73.19 SQ.FT



SUITE AREA	122.65 SQ.M	1,320.19 SQ.FT
BALCONY AREA	22.28 SQ.M	239.82 SQ.FT
TOTAL AREA	144.93 SQ.M	1,560.01 SQ.FT



2 BHK

UNIT TYPE 12

1. HALL	63.29 SQ.FT
2. POWDER	28.95 SQ.FT
3. KITCHEN & DINING	206.13 SQ.FT
4. LIVING	237.34 SQ.FT
5. BALCONY NO.1	189.12 SQ.FT
6. MASTER SUITE	267.27 SQ.FT
7. BALCONY NO. 2	80.19 SQ.FT
8. ENSUITE BATHROOM	77.50 SQ.FT
9. BEDROOM	208.17 SQ.FT
10. BATHROOM	46.07 SQ.FT



SUITE AREA	110.62 SQ.M	1,190.70 SQ.FT
BALCONY AREA	28.40 SQ.M	305.70 SQ.FT
TOTAL AREA	139.02 SQ.M	1,496.40 SQ.FT



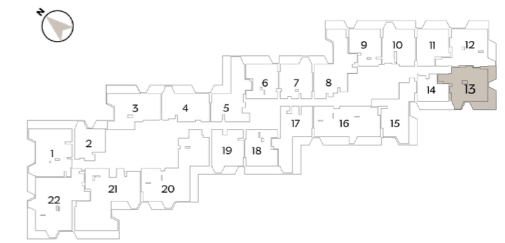
2 BHK

UNIT TYPE 13

1. HALL	137.02 SQ.FT
2. POWDER	27.88 SQ.FT
3. KITCHEN & DINING	130.89 SQ.FT
4. LIVING	174.48 SQ.FT
5. BALCONY NO.1	235.41 SQ.FT
6. MASTER BEDROOM	201.93 SQ.FT
7. BALCONY NO. 2	80.51 SQ.FT
8. BATHROOM NO.1	66.63 SQ.FT
9. BEDROOM	207.85 SQ.FT
10. BATHROOM NO. 2	45.32 SQ.FT



SUITE AREA	97.17 SQ.M	1,045.93 SQ.FT
BALCONY AREA	31.74 SQ.M	341.65 SQ.FT
TOTAL AREA	128.91 SQ.M	1,387.58 SQ.FT



2 BHK

UNIT TYPE 15

1. HALL	100.64 SQ.FT
2. POWDER	36.06 SQ.FT
3. KITCHEN & DINING	224.10 SQ.FT
4. LIVING	138.85 SQ.FT
5. BALCONY	263.07 SQ.FT
6. MASTER BEDROOM	261.46 SQ.FT
7. BATHROOM NO.1	57.80 SQ.FT
8. BEDROOM	171.90 SQ.FT
9. BATHROOM NO. 2	70.29 SQ.FT

1.



SUITE AREA	102.43 SQ.M	1,102.55 SQ.FT
BALCONY AREA	26.91 SQ.M	289.66 SQ.FT
TOTAL AREA	129.34 SQ.M	1,392.20 SQ.FT



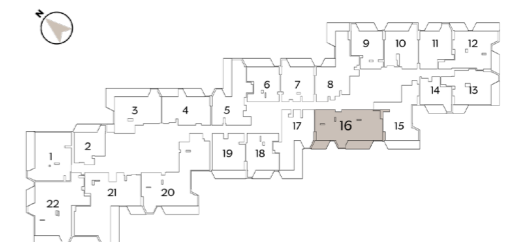
2 BHK

UNIT TYPE 16

1. HALL	72.12 SQ.FT
2. POWDER	34.98 SQ.FT
3. KITCHEN & DINING	184.17 SQ.FT
4. LIVING	305.26 SQ.FT
5. BALCONY NO.1	145.64 SQ.FT
6. MASTER SUITE	306.88 SQ.FT
7. BALCONY NO. 2	92.14 SQ.FT
8. ENSUITE BATHROOM	101.07 SQ.FT
9. BEDROOM	228.52 SQ.FT
10. BATHROOM NO. 1	61.68 SQ.FT
11. LAUNDRY	84.82 SQ.FT
12. BATHROOM NO. 2	36.49 SQ.FT



SUITE AREA	140.42 SQ.M	1,511.47 SQ.FT
BALCONY AREA	24.80 SQ.M	266.94 SQ.FT
TOTAL AREA	165.22 SQ.M	1,778.41 SQ.FT



2 BHK

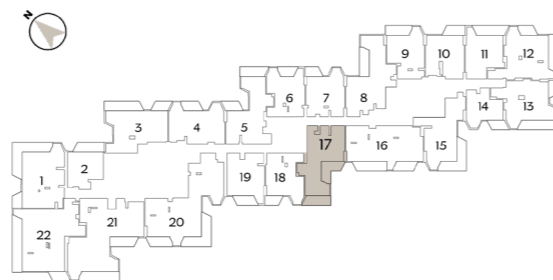
UNIT TYPE 17

1. HALL	157.26 SQ.FT
2. POWDER	31.54 SQ.FT
3. KITCHEN & DINING	167.70 SQ.FT
4. LIVING	247.03 SQ.FT
5. BALCONY NO.1	147.36 SQ.FT
6. MASTER BEDROOM	225.61 SQ.FT
7. BALCONY NO. 2	158.88 SQ.FT

8. BATHROOM NO.1	68.78 SQ.FT
9. BEDROOM	125.18 SQ.FT
10. BATHROOM NO. 2	54.03 SQ.FT



SUITE AREA	103.55 SQ.M	1,114.60 SQ.FT
BALCONY AREA	32.01 SQ.M	344.55 SQ.FT
TOTAL AREA	135.56 SQ.M	1,459.16 SQ.FT



2 BHK

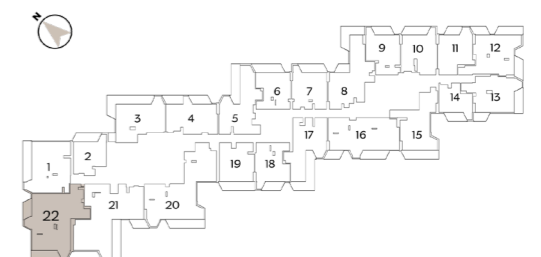
UNIT TYPE 22

1. HALL	69.75 SQ.FT
2. POWDER	31.22 SQ.FT
3. KITCHEN & DINING	354.24 SQ.FT
4. LIVING	215.92 SQ.FT
5. BALCONY NO.1	92.14 SQ.FT
6. MASTER SUITE	371.79 SQ.FT
7. BALCONY NO. 2	155.86 SQ.FT

8. ENSUITE BATHROOM	173.62 SQ.FT
9. BEDROOM	285.24 SQ.FT
10. BATHROOM NO.1	59.63 SQ.FT
11. LAUNDRY	70.50 SQ.FT
12. UTILITY ROOM	66.41 SQ.FT
13. BATHROOM NO. 2	37.78 SQ.FT



SUITE AREA	171.79 SQ.M	1,849.13 SQ.FT
BALCONY AREA	26.62 SQ.M	286.54 SQ.FT
TOTAL AREA	198.41 SQ.M	2,135.67 SQ.FT



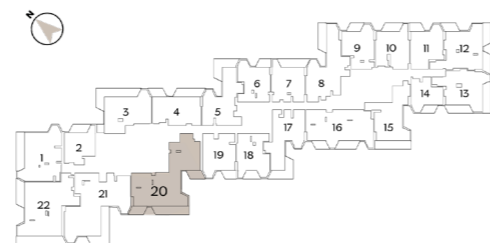
3 BHK

UNIT TYPE 20

1. HALL	80.62 SQ.FT	8. ENSUITE BATHROOM	100.97 SQ.FT
2. POWDER	33.80 S Q.FT	9. BEDROOM NO.1	232.82 SQ.FT
3. LAUNDRY	70.29 SQ.FT	10. BATHROOM NO.1	64.05 SQ.FT
4. KITCHEN & DINING	321.05 SQ.FT	11. BEDROOM NO.2	195.47 SQ.FT
5. LIVING	325.82 SQ.FT	12. BALCONY NO.3	92.68 SQ.FT
6. BALCONY NO.1	216.79 SQ.FT	13. BATHROOM NO.2	67.27 SQ.FT
7. MASTER SUITE	361.13 SQ.FT		
8. BALCONY NO.2	92.14 SQ.FT		



SUITE AREA	181.47 SQ.M	1,953.33 SQ.FT
BALCONY AREA	40.71 SQ.M	438.20 SQ.FT
TOTAL AREA	222.18 SQ.M	2,391.53 SQ.FT



3 BHK

UNIT TYPE 21

1. HALL	158.55 SQ.FT	9. BEDROOM NO.1	275.56 SQ.FT
2. POWDER	27.99 SQ.FT	10. BATHROOM NO.2	72.44 SQ.FT
3. KITCHEN & DINING	335.83 SQ.FT	11. BEDROOM NO.2	158.01 SQ.FT
4. LIVING	390.62 SQ.FT	12. BATHROOM NO.3	56.62 SQ.FT
5. BALCONY NO.1	205.05 SQ.FT	13. LAUNDRY	44.56 SQ.FT
6. MASTER BEDROOM	272.22 SQ.FT	14. UTILITY ROOM	70.93 SQ.FT
7. BALCONY NO.2	133.15 SQ.FT	15. BATHROOM NO.4	39.18 SQ.FT
8. BATHROOM NO.1	90.96 SQ.FT		



SUITE AREA	195.16 SQ.M	2,100.68 SQ.FT
BALCONY AREA	35.41 SQ.M	381.15 SQ.FT
TOTAL AREA	230.57 SQ.M	2,481.83 SQ.FT

