

the
collection

AT TAIYO



WASL GATE

LMD^o



**NOT JUST LIVING.
LIVING, LEVELLED UP.**

URBAN LIVING, DIALLED UP.

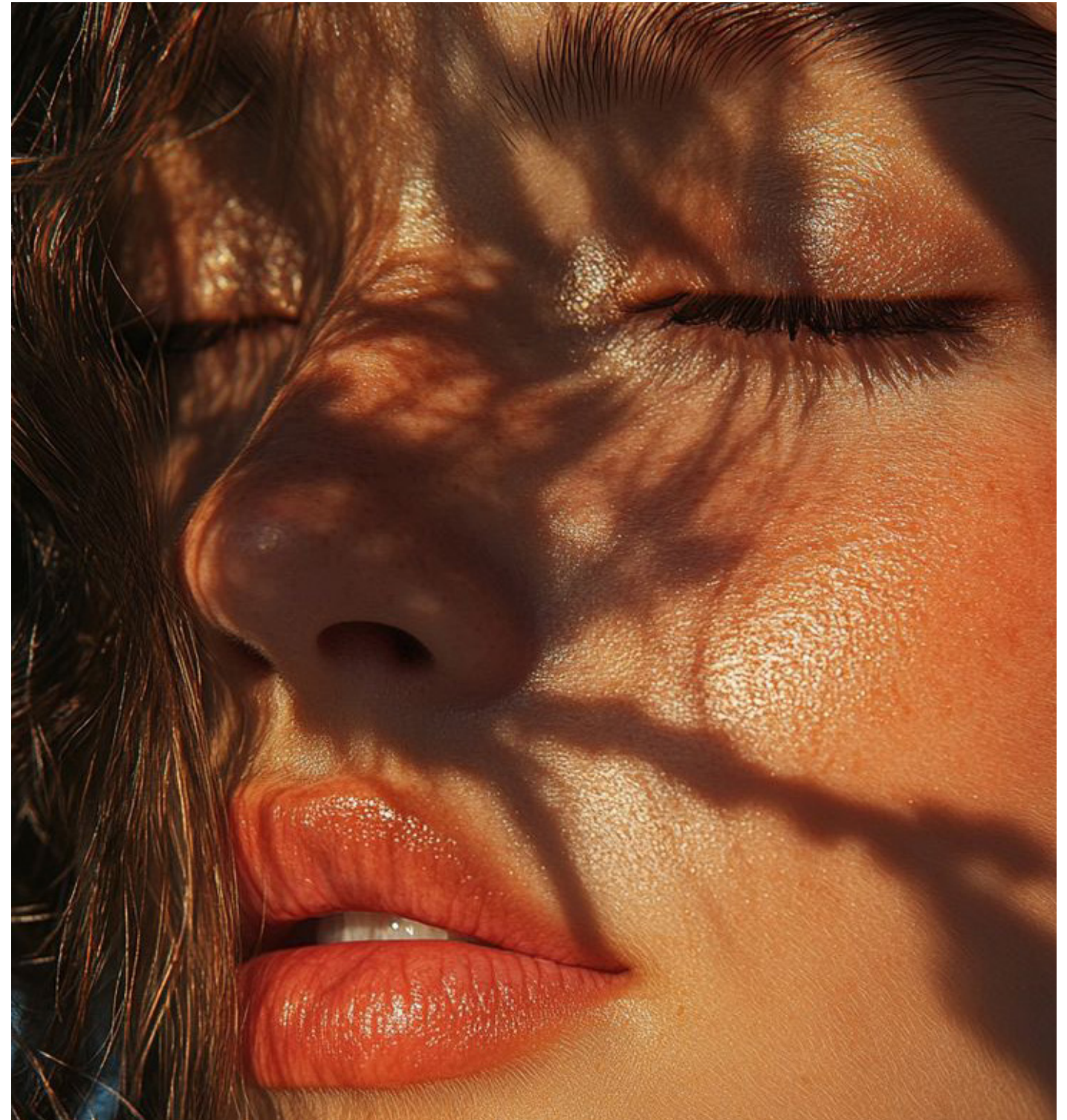
Taiyo sets the tone for design-forward, connected living, but The Collection takes it further. This limited edition of fully furnished residences is crafted for those who never do ordinary.

Bolder finishes, sharper details and a seamless move-in-ready experience make every home as confident as it is considered. Styled to feel complete the moment the keys turn, each space is sleeker, more magnetic and unmistakably cosmopolitan.

From dawn to dusk and beyond, these homes are built to match every rhythm of life, combining smart design, elevated kitchens and bathrooms and a calm, contemporary palette that is as stylish as it is livable.

For residents, it is design-first living from day one. For investors, it is a turnkey asset ready to perform the moment the keys are in hand.

This isn't just a home. It is a lifestyle turned all the way up.





DUBAI AMPLIFIED.

Dubai is a city that never stands still. Skyscrapers rise overnight, new ideas turn into reality and the pace rarely slows. Its energy is amplified, its skyline ever-changing, its streets alive with culture and creativity.

At the heart of this momentum, The Collection at Taiyo offers a place where life moves with rhythm, style and connection – a home in sync with the future of the city.



CITY ENERGY. NEIGHBOURHOOD CALM.

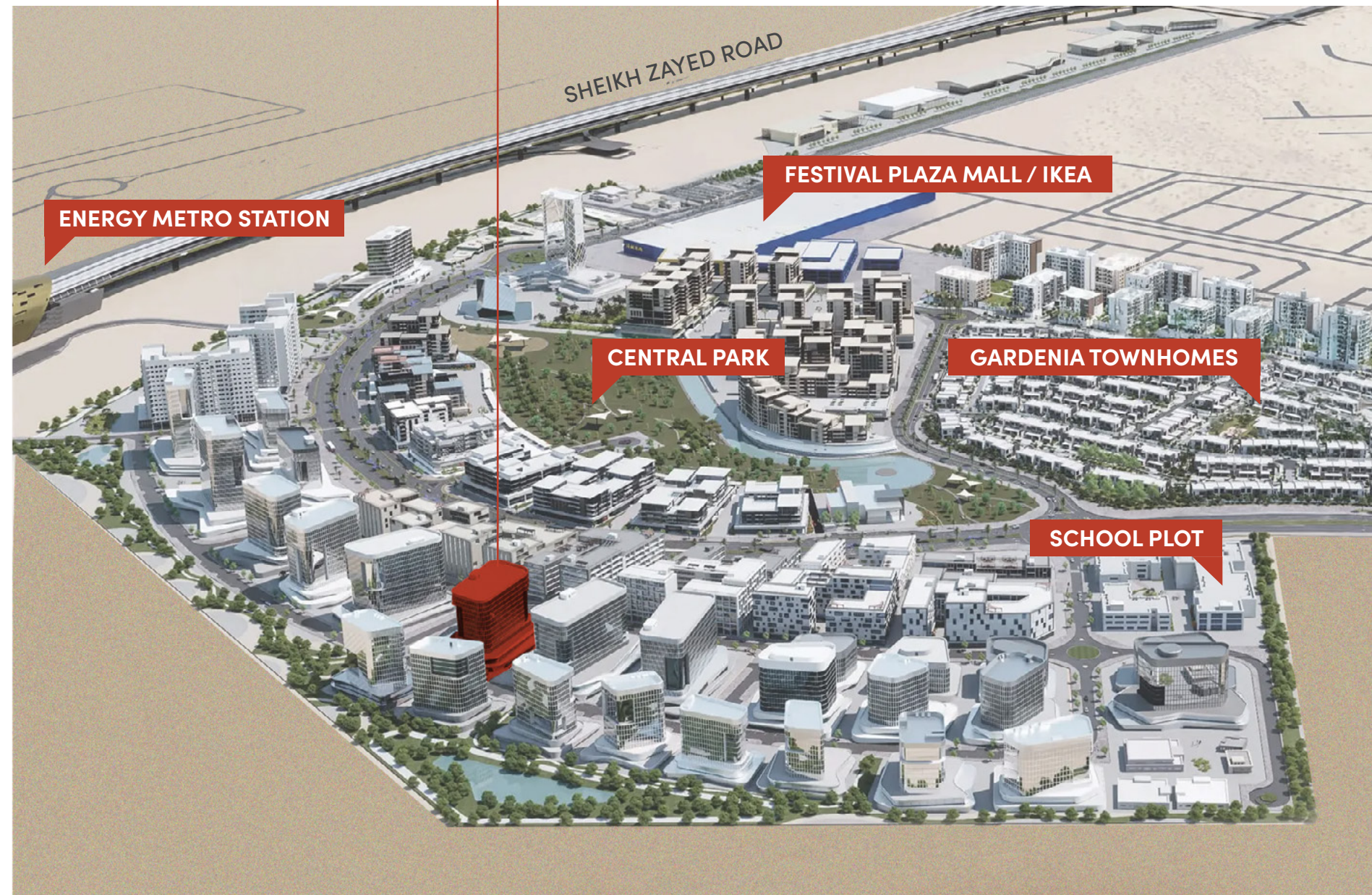
Nestled within trend-setting Wasl Gate, The Collection at Taiyo puts you at the centre of Dubai's pulse, yet just far enough away to let the city's rhythm slow to a softer pace.

Life here moves with attitude, leafy boulevards and green spaces set a calmer tempo, while cafés, dining and retail keep the energy alive just steps away.

With direct metro access and seamless road links, Downtown's skyline, Dubai Marina's waterfront, Expo City's innovation, and the next adventure from Dubai's airport are all within minutes.

This is where city energy meets personal rhythm, an insider's address where connection, convenience and community come together.

the collection AT TAIYO





PLUGGED INTO DUBAI'S PULSE.



Living at Wasl Gate means being plugged into Dubai's pulse while enjoying a neighbourhood alive with energy.

Everything is within reach, homes, shops, parks and everyday essentials woven into one walkable master plan.

Direct metro and road access make every commute effortless, every journey seamless and every destination minutes away.

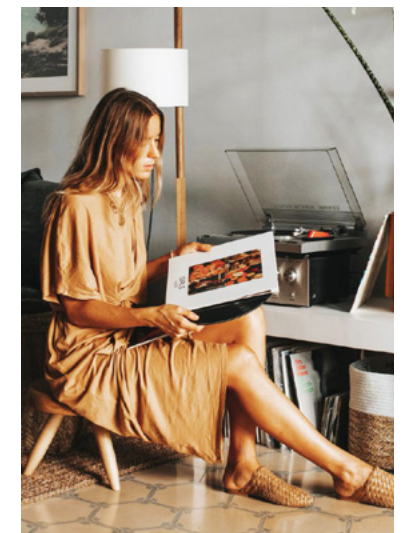




DESIGN THAT INSPIRES THE WAY YOU LIVE.

Clean lines and sculptural forms give The Collection at Taiyo its bold vertical rhythm, a statement silhouette rising proudly in the heart of Wasl Gate. Glass façades and warm accents invite light to dance across every level, filling residences with a luminous, unmistakable energy.

Framed balconies and floor-to-ceiling windows blur the line between indoors and out, capturing panoramic views and connecting life inside with the city's vibrant pulse.





LMD[®]

LMD[®]



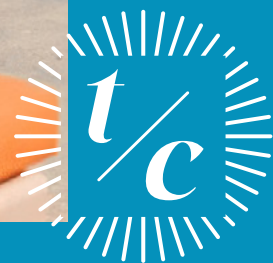
MOVE. MEET. REPEAT.



Life at The Collection at Taiyo is designed to feel effortless, inspiring and alive with energy.

Mornings begin with mindful movement and endorphin-fueled workouts, afternoons flow into focused sessions in the co-working lounge or quiet moments in the reflection room and evenings unfold with padel matches or golden-hour swims under the open sky.

Every space sparks connection, celebrates style and creates a lifestyle set to its own beat.

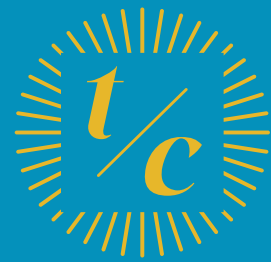




STEP INTO THE RHYTHM.

Arrival feels charged with anticipation. The building's bold silhouette makes a striking statement against the sky, setting the tone before you even step inside. Inside, the space hums with quiet energy — elevated yet welcoming — a place that signals you've arrived somewhere vibrant, connected and alive with possibility.





**AMENITIES WITH
MORE ATTITUDE,
MORE STYLE,
MORE ENERGY.**

THE CITY'S COOLEST RETREAT.

The pool is more than a place to swim, it's an escape. Framed by cabanas, a palm-fringed deck and the city skyline, it feels like the city's coolest retreat right in the heart of Dubai. By day, it's a sun-soaked sanctuary for spirited laps, lazy lounging and catching up with friends. By night, the water glows softly, the skyline comes alive and the space transforms into a social stage.







MOVE WITH INTENTION.

This isn't just a gym, it's a mindset. Framed by floor-to-ceiling glass and lush greenery, the space is drenched in natural light, creating an airy, uplifting environment that feels like a boutique wellness studio.

State-of-the-art equipment and thoughtfully zoned areas for cardio, strength and movement make every session feel intentional. From sweat-fueled sprints to mindful yoga flows and restorative stretches, wellness here is effortless and elevated.



GAME, SET, SOCIAL.

Surrounded by greenery and glowing under evening lights, the padel courts set the stage for spirited rallies, friendly matches and courtside banter. Their sleek design and vibrant, well-lit energy turn every game into an event. This is where movement meets community and every serve comes with a shot of style and camaraderie.

THE THINK TANK.

Where collaboration feels electric and creativity runs free, this co-working space is flooded with natural light and finished in a clean, modern aesthetic – designed to spark ideas and fuel momentum.

From morning brainstorms to afternoon deep work, every corner keeps focus sharp, energy high and inspiration within reach.





PAUSE & RESET.

A pause button in a life lived at full speed, this calm, design-led sanctuary balances the community's energy with space to breathe. Floor-to-ceiling windows fill the room with soft natural light, while considered seating invites slow moments, whether a coffee, a read, or a quiet reset between meetings, leaving you reset and ready for the next round.







STYLED FOR LIVING.

Move right in and make it yours, these fully furnished homes are curated for those ready to go. Stylish contours, layered textures and mood-setting details create calm, light-filled spaces styled to perfection. Floor-to-ceiling windows frame greenery and fill each room with a warm glow, turning interiors into the perfect backdrop for life.







**RESIDENCES
THAT SET TRENDS,
NOT FOLLOW THEM.**



LIVING LEVELLED UP.

These fully-furnished living spaces are made for more – more light, more flow, more moments that matter.

Generous layouts connect living, dining, and kitchen zones, creating a social hub where good company and great design meet. Floor-to-ceiling windows frame greenery and pull daylight deep inside, giving every corner a bright, open feel. Each space is crafted to keep life switched on, socially in sync and always in the mix.

DESIGNED TO DINE.

Reimagined for a life that's anything but ordinary, the kitchen is where style and flavour collide. Fully integrated Bosch and European appliances, elevated finishes and mood-setting lighting turn every recipe into an experience worth sharing.

Sleek natural stone countertops with appliances that stay hidden until it's showtime, while entertainer-ready layouts make every meal feel like a celebration.







REST ELEVATED.

These fully-furnished bedrooms are designed as modern sanctuaries where the city fades away and calm takes center stage. Soft, muted tones and layered textures create a backdrop that feels serene yet stylish, while natural light and expansive views turn mornings into fresh starts and nights into slow rituals.

Every detail, from the carefully curated furnishings to the high-quality Grohe sanitaryware, is curated to make waking up feel energising, winding down feel intentional and every moment in between completely in sync.

the collection AT TAIYO

MINUTES TO EVERYWHERE.

2

Minutes to
Places of
Worship

3

Minutes to
Festival
Plaza Mall

6

Minutes to
Ibn Battuta
Mall

9

Minutes to
Dubai Marina

12

Minutes to
Palm
Jumeirah

17

Minutes to
Mall of the
Emirates

23

Minutes to
Jumeirah
Beach

30

Minutes to
Downtown
Dubai

40

Minutes to
Dubai
Int'l Airport



0 Minutes

10 Minutes

20 Minutes

30 Minutes

40 Minutes

ABOUT THE DEVELOPER.

LMD^o

Since its inception in 2007, LMD has been dedicated to crafting transformative experiences through thriving communities and integrated destinations that prioritize people and innovation.

With projects spanning first and second homes, as well as iconic mixed-use developments, LMD has established a strong presence in the UAE, Egypt, Spain and Greece.

LMD's global expansion has resulted in a portfolio that includes notable projects like Continental Tower, The Pier Residences, Marina Living and Boutique XII in Dubai, 91 Muntaner in Barcelona, and upcoming developments in Greece, all while maintaining a focus on exceeding expectations and shaping the future of development.



LMD^o PROJECTS.

AN UNRIVALED FOOTPRINT OF TRANSFORMATION.

Dubai, UAE

Continental Tower - Residential - Marina - Dubai - United Arab Emirates
Rukan - Residential - Dubai Land - Dubai - United Arab Emirates
Marina Living - Residential - AlJaddaf - Dubai - United Arab Emirates
Boutique XII - Residential - AlJaddaf - Dubai - United Arab Emirates
Boutique'23 - Residential - AlJaddaf - Dubai - United Arab Emirates
La Boutique - Residential - AlJaddaf - Dubai - United Arab Emirates
The Pier Residence - Residential - Dubai Maritime City - Dubai - United Arab Emirates
Taiyo Residences - Residential - Wasl Gate - Dubai - United Arab Emirates

Egypt

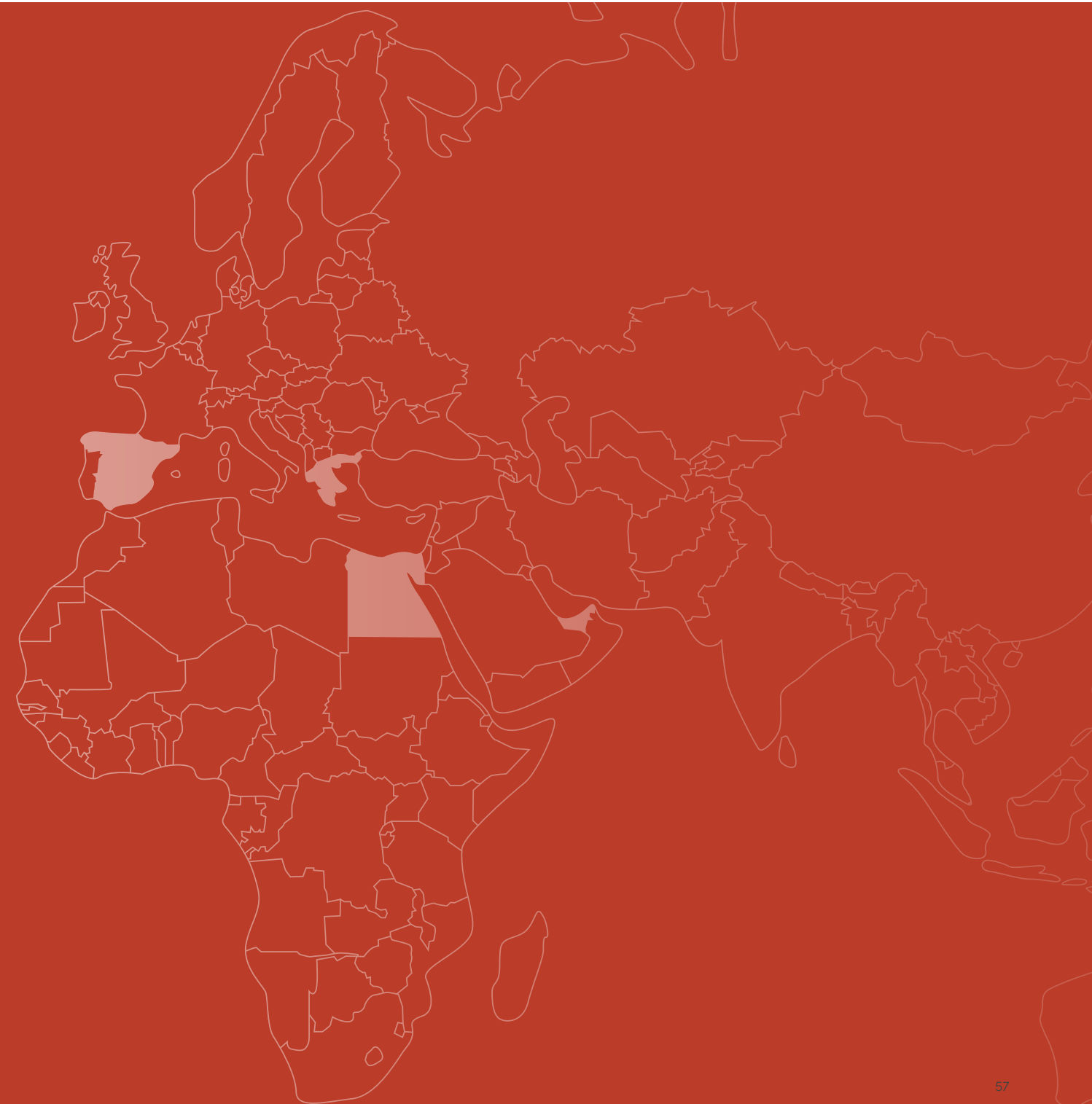
STEI8HT - Mixed-use development and Residential - New Cairo - Egypt
There - Mixed-use development - New Cairo - Egypt
Eastside - Office Spaces - New Cairo - Egypt
Eastmed - Medical - New Cairo - Egypt
More - Serviced Residences - New Cairo - Egypt
Office Villas - Offices - New Cairo - Egypt
One Ninety - Mixed-use development- (Commercial, Retail & Offices) - New Cairo - Egypt
W Residences Cairo - Branded Residences - New Cairo - Egypt
Cairo Design District - Commercial and Hospitality - New Cairo - Egypt
3'Sixty - Commercial (Retail, Offices, Clinics) - Golden Square - New Cairo - Egypt
Being - Residential & Commercial - New Zayed - Egypt
Zoya - Coastal Living - Ghazala Bay, North Coast - Egypt
Layan Residence - Residential - Golden Square, New Cairo - Egypt
Aria - Residential - Mostakbal City - New Cairo - Egypt

Spain

Muntaner 91 - Residential - Barcelona - Spain

Greece

Karaiskaki 15 - Residential - Voula - Greece
Archimidous 5 - Residential - Glyfada - Greece
The Lemon Tree & Co - Hospitality - Athens - Greece



LEADING PARTNERS.

archcorp

ARCHITECTURE & DESIGN

Archcorp Architectural Engineering is a UAE-based multidisciplinary design consultancy established in 2005, offering end-to-end services across architecture, structural and MEP engineering, interior design, master planning, and site supervision.

Known for its innovative use of technology and collaborative approach, Archcorp has built a reputation for creating efficient, future-ready projects that balance design vision with engineering excellence.

DEVMARK

STRATEGIC ADVISORY, SALES & MARKETING

Devmark is the UAE's leading development marketing and sales consultancy, renowned for connecting premium real estate developments with discerning global audiences.

With a focus on strategic insights and market expertise, Devmark connects this iconic project with an audience seeking the pinnacle of considered living.

Freedm

CREATIVE AGENCY

Freedm is a global, award-winning, creative agency. With an international expert team, Freedm represents a diverse collective of creative and strategic specialists who provide real estate developers with marketing and creative strategy, that translates into powerful return on investment.

